

# Technical Specification

## Hydraulic crane

### PK 245 TEC

(S421-SK-B)

---

Edition 12/2022

EN

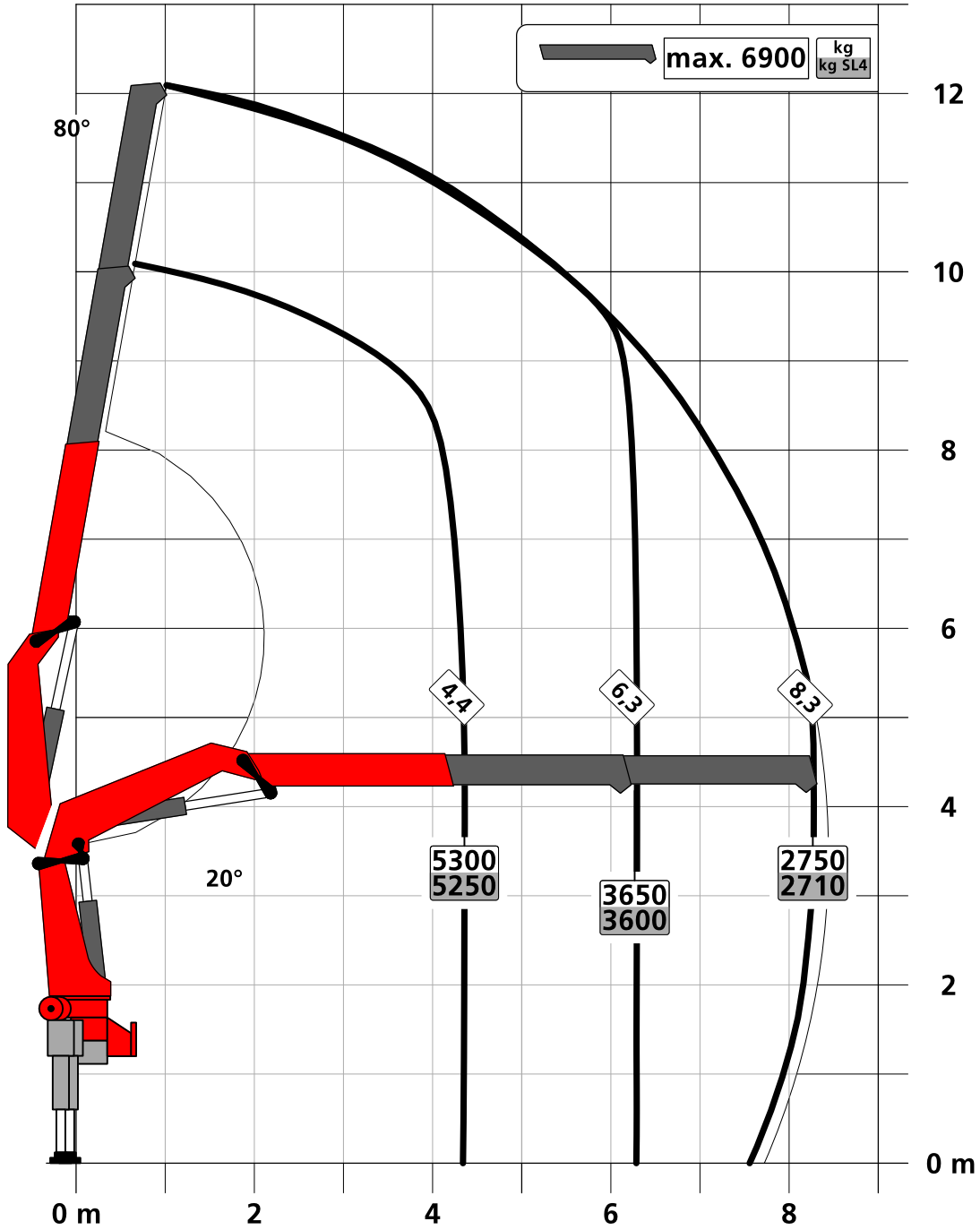
---

PALFINGER AG  
Lamprechtshausener Bundesstraße 8  
5101 Bergheim / Austria  
[www.palfinger.com](http://www.palfinger.com)

Page	
020	LIFTING CAPACITY DIAGRAM
020.02100	Lifting capacity diagram PK 245 TEC A
020.03100	Lifting capacity diagram PK 245 TEC B
020.04100	Lifting capacity diagram PK 245 TEC C
020.05100	Lifting capacity diagram PK 245 TEC D
020.06100	Lifting capacity diagram PK 245 TEC E
020.07100	Lifting capacity diagram PK 245 TEC F
020.08100	Lifting capacity diagram PK 245 TEC D PJ075 A
020.09100	Lifting capacity diagram PK 245 TEC D PJ075 B JV2
020.10100	Lifting capacity diagram PK 245 TEC E PJ045 A JV2
020.21000	Load capacity-Rope winch 2.5t

Subject to change, production tolerances have to be taken into account.

Symbolic crane figure



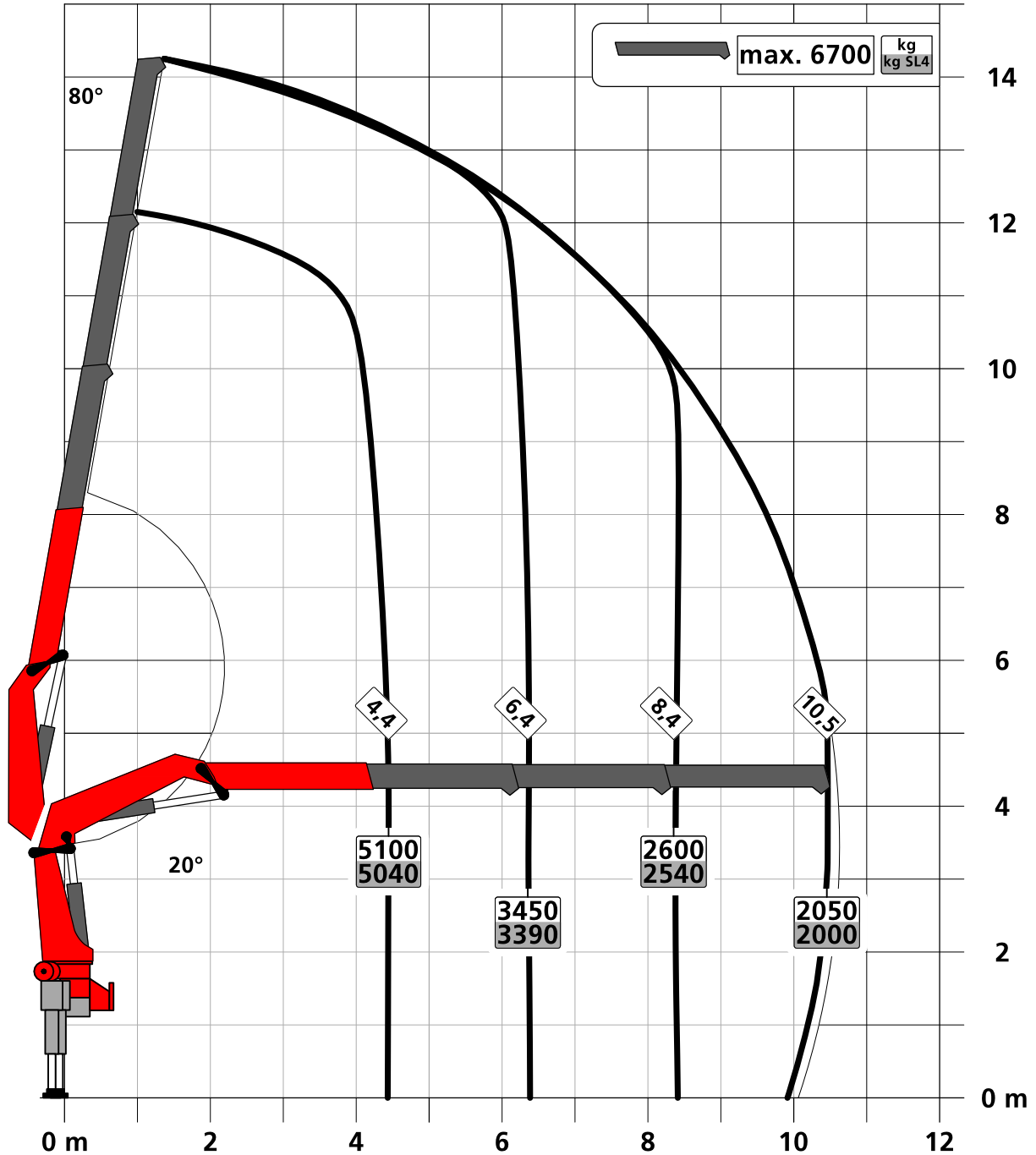
For Rope winch load capacity refer to page  
Page 020.21000

Lifting capacity diagram PK 245 TEC B

Subject to change, production tolerances have to be taken into account.

Preliminary

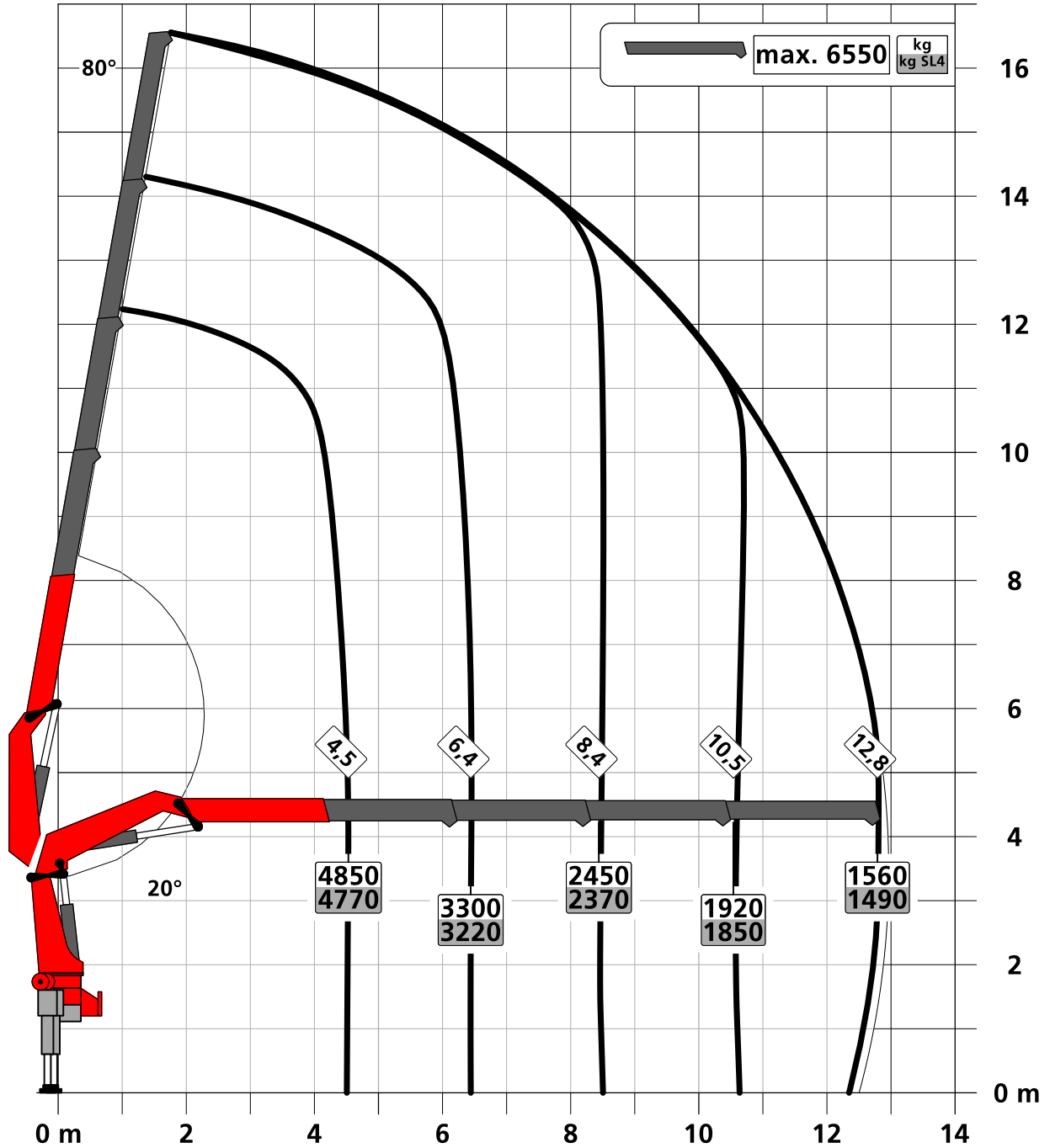
Symbolic crane figure



For Rope winch load capacity refer to page  
Page 020.21000

Subject to change, production tolerances have to be taken into account.

Symbolic crane figure



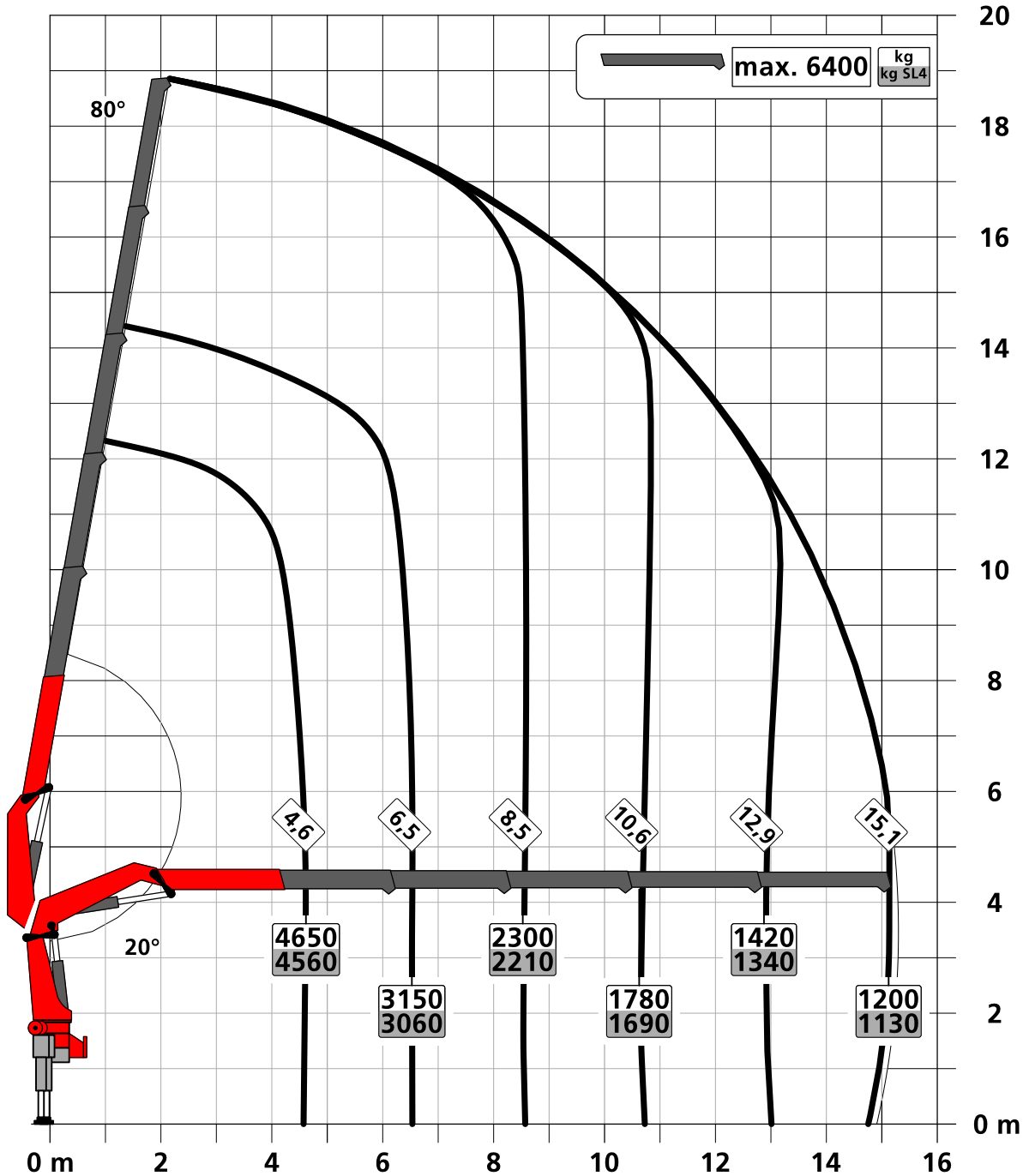
For Rope winch load capacity refer to page  
Page 020.21000

Lifting capacity diagram PK 245 TEC D

Subject to change, production tolerances have to be taken into account.

Preliminary

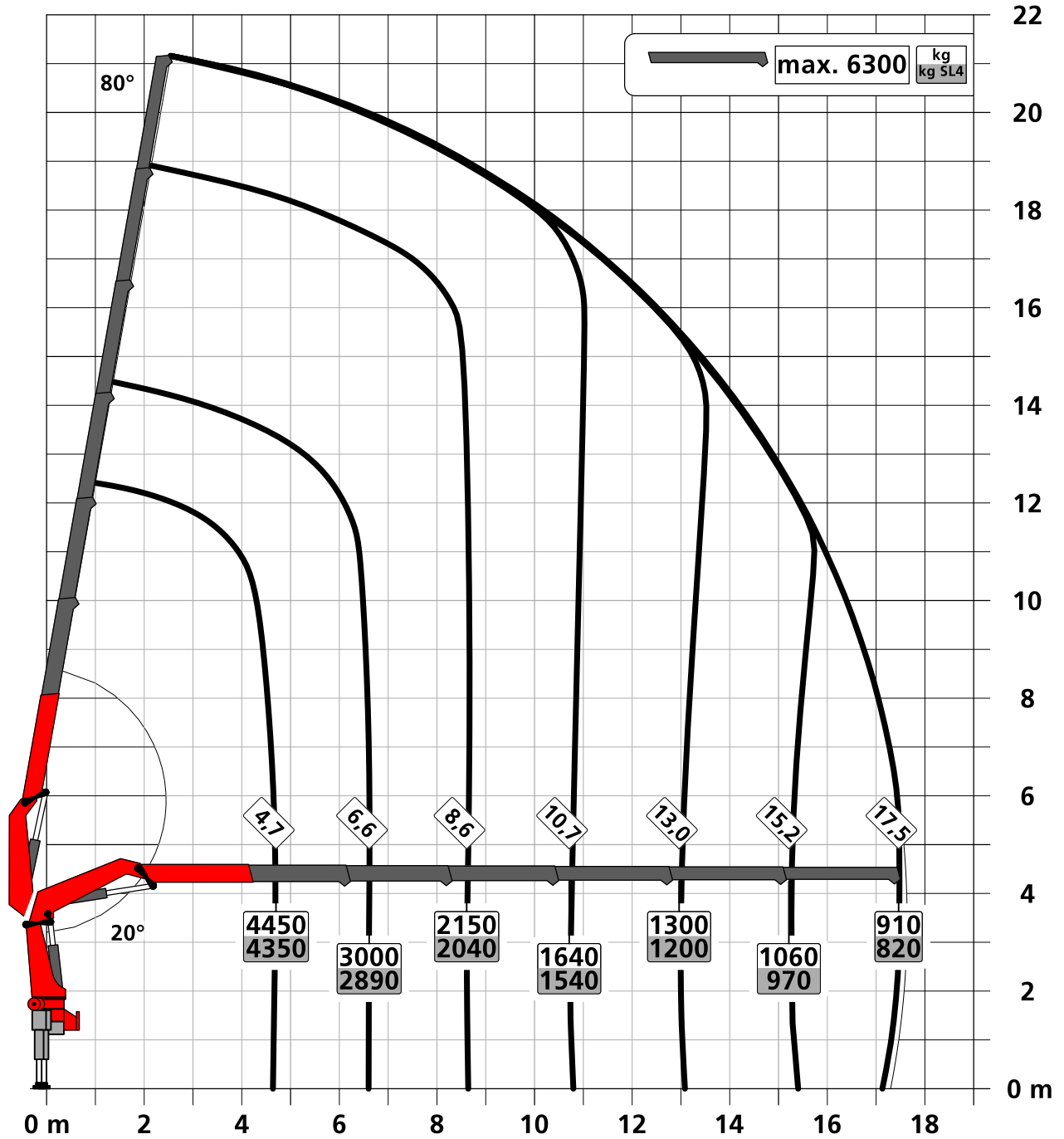
Symbolic crane figure



For Rope winch load capacity refer to page  
Page 020.21000

Subject to change, production tolerances have to be taken into account.

Symbolic crane figure



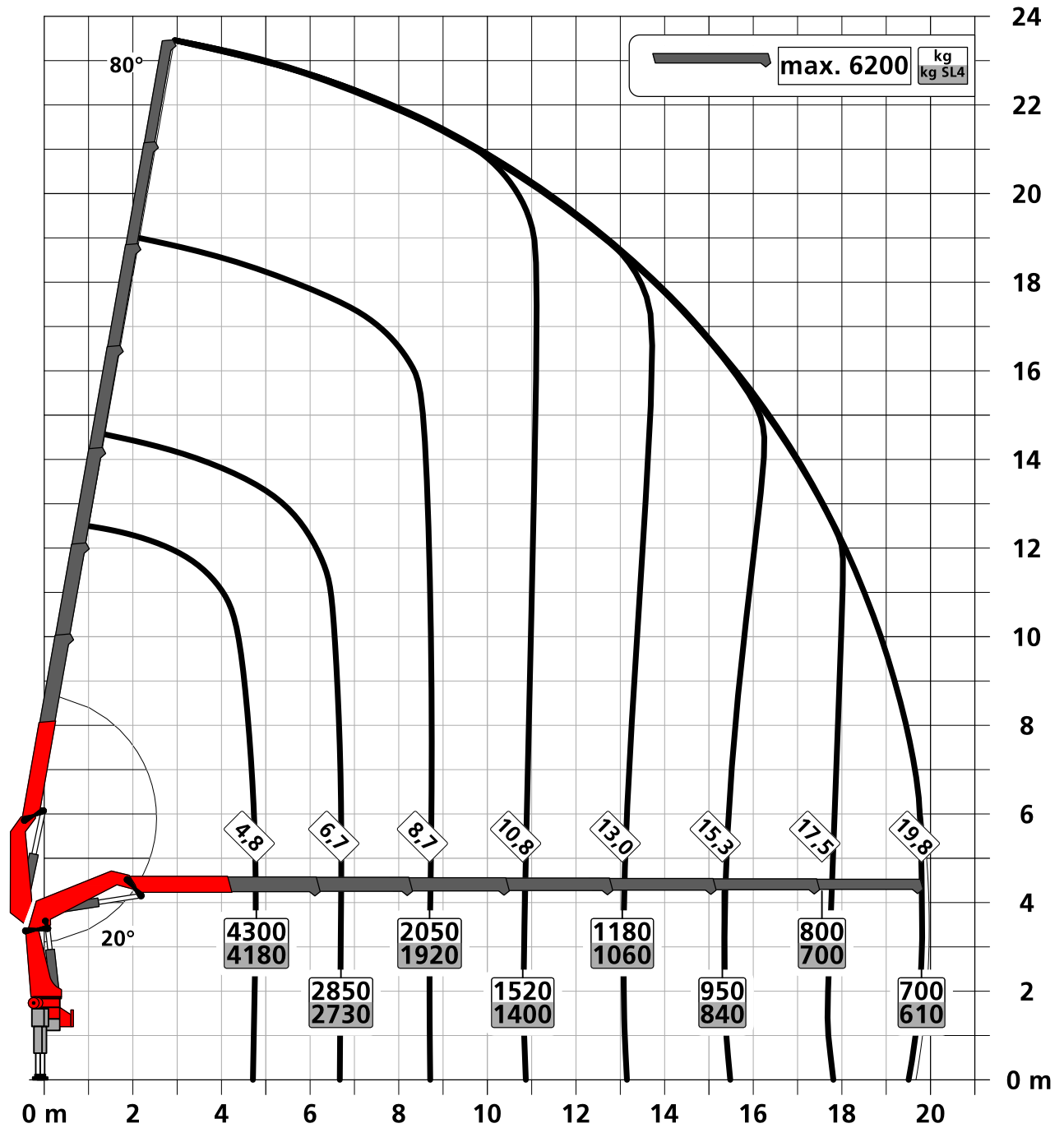
For Rope winch load capacity refer to page  
Page 020.21000

Lifting capacity diagram PK 245 TEC F

Subject to change, production tolerances have to be taken into account.

Preliminary

Symbolic crane figure

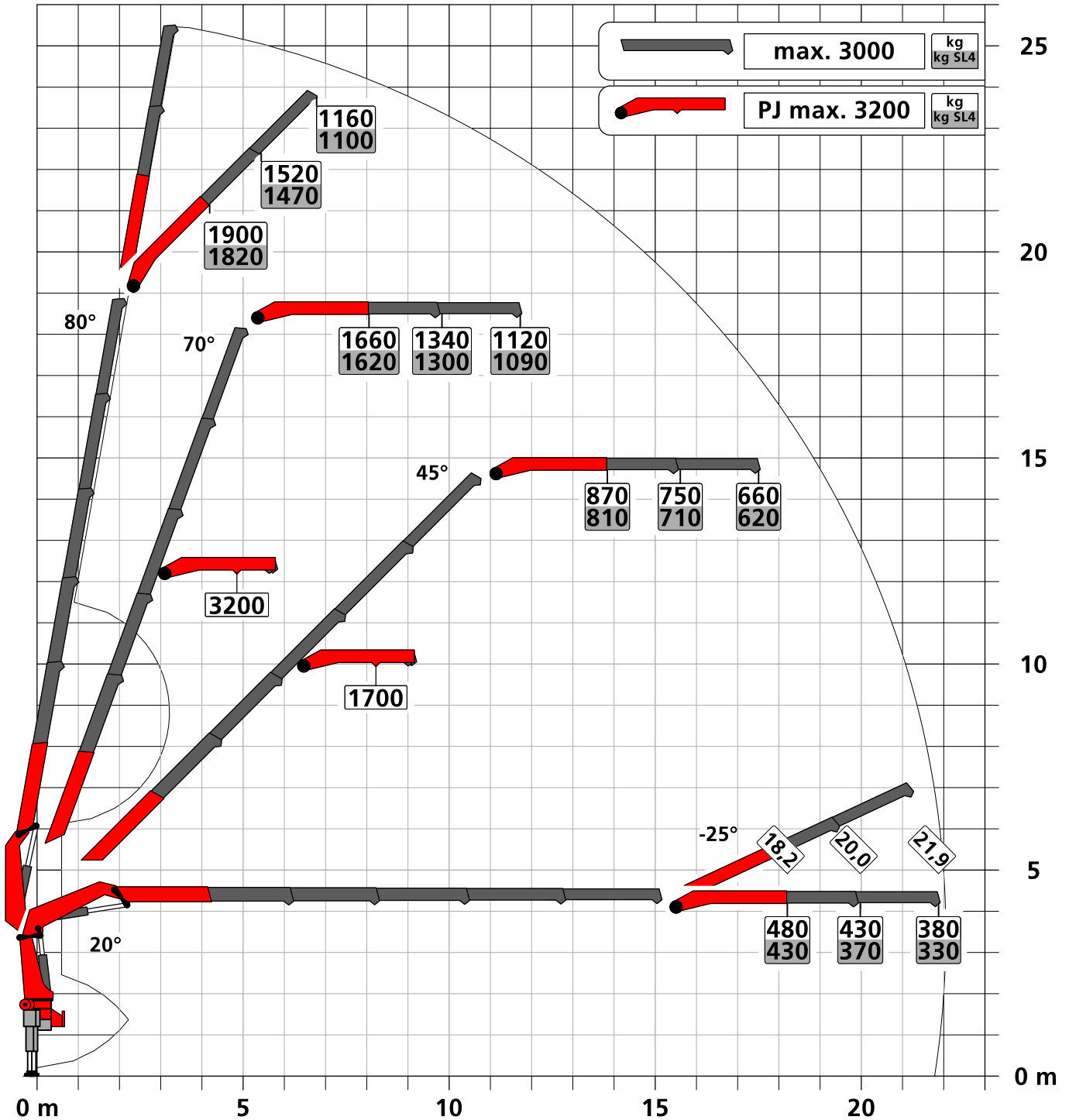


For Rope winch load capacity refer to page  
Page 020.21000



Subject to change, production tolerances have to be taken into account.

Symbolic crane figure



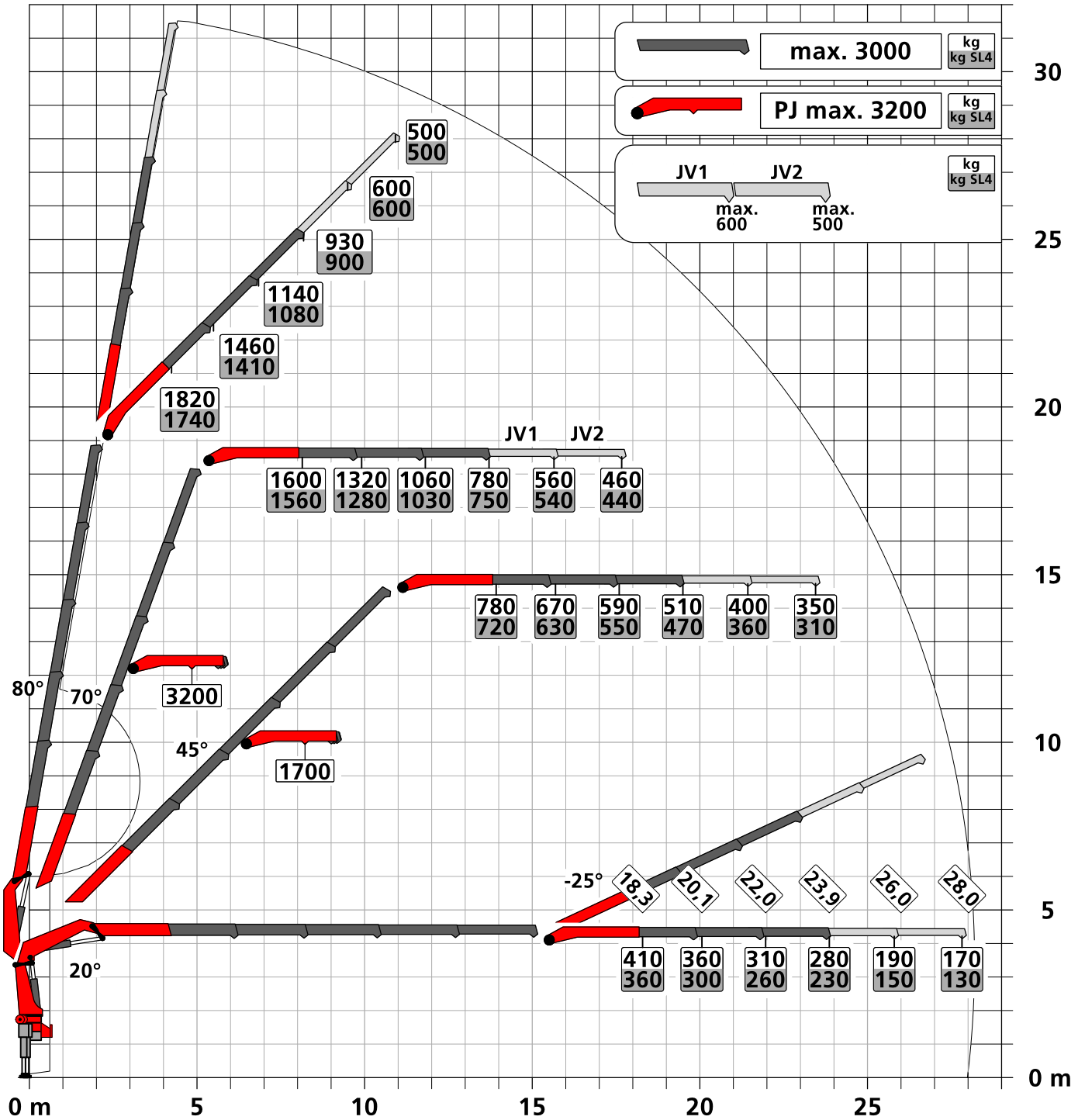
For Rope winch load capacity refer to page  
Page 020.21000 2.5t

Lifting capacity diagram PK 245 TEC D PJ075 B JV2

Subject to change, production tolerances have to be taken into account.

Preliminary

Symbolic crane figure



Dead weight JV2  
75 kg

When using mechanical boom extensions, the loads shown on the charts need to be reduced by the weight of these extensions.

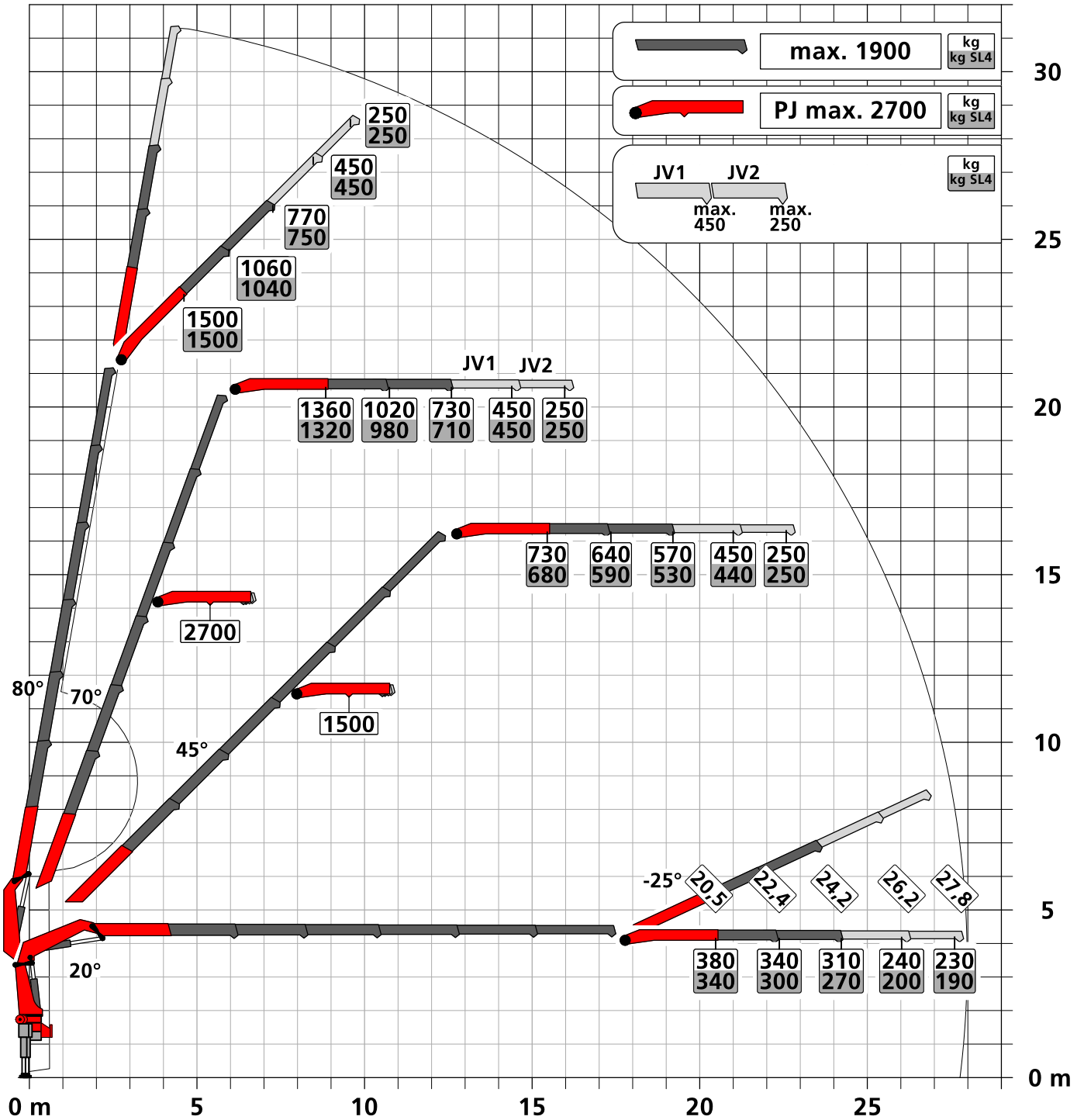


For Rope winch load capacity refer to page  
Page 020.21000 2.5t

Subject to change, production tolerances have to be taken into account.

Preliminary

Symbolic crane figure



Dead weight JV2 50 kg

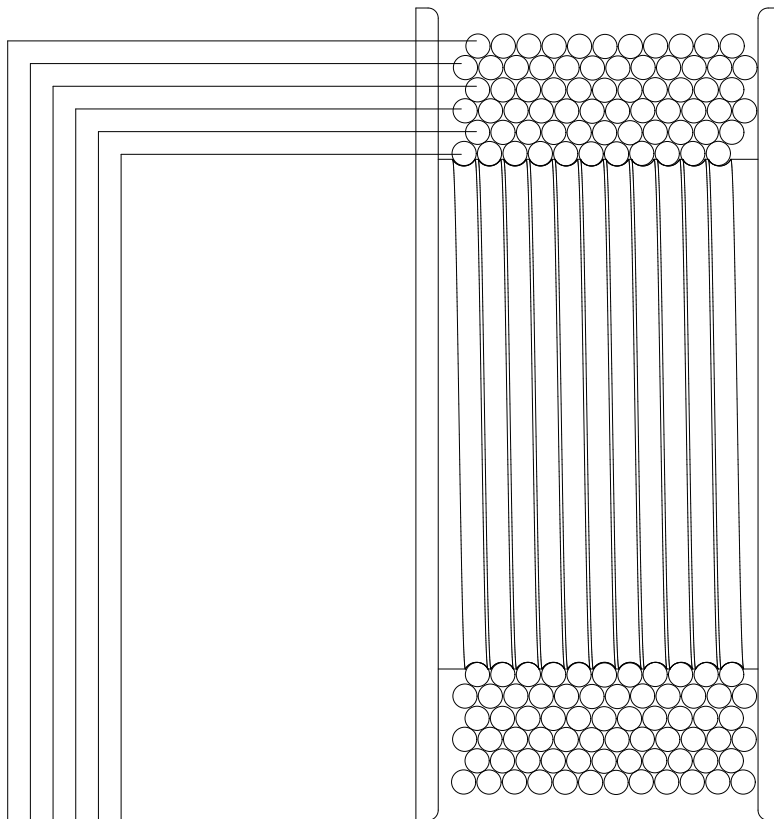
When using mechanical boom extensions, the loads shown on the charts need to be reduced by the weight of these extensions.



For Rope winch load capacity refer to page Page 020.21000 2.5t

Load capacity-Rope winch 2.5t

Subject to change, production tolerances have to be taken into account.



Strands		Strands	
1STRAN		2STRAN	
	Load capacity	Wire reception	
1	2500 kg [5,510 lb]	12 m [39' 4"]	5000 kg [11,020 lb]
2	2350 kg [5,180 lb]	24 m [78' 9"]	4700 kg [10,360 lb]
3	2210 kg [4,870 lb]	37,6 m [123' 4"]	4420 kg [9,740 lb]
4	2090 kg [4,610 lb]	51 m [167' 4"]	4180 kg [9,220 lb]
5	1980 kg [4,370 lb]	66,2 m [217' 2"]	3970 kg [8,750 lb]
6	1880 kg [4,150 lb]	81 m [265' 9"]	3760 kg [8,290 lb]

Weights of load handling devices are part of the load lifted and must be deducted from the capacity.  
Weight of the load handling equipment must be deducted from the lifting capacity.



