

Technical Specification

PCC57.002

(PCC57.002)

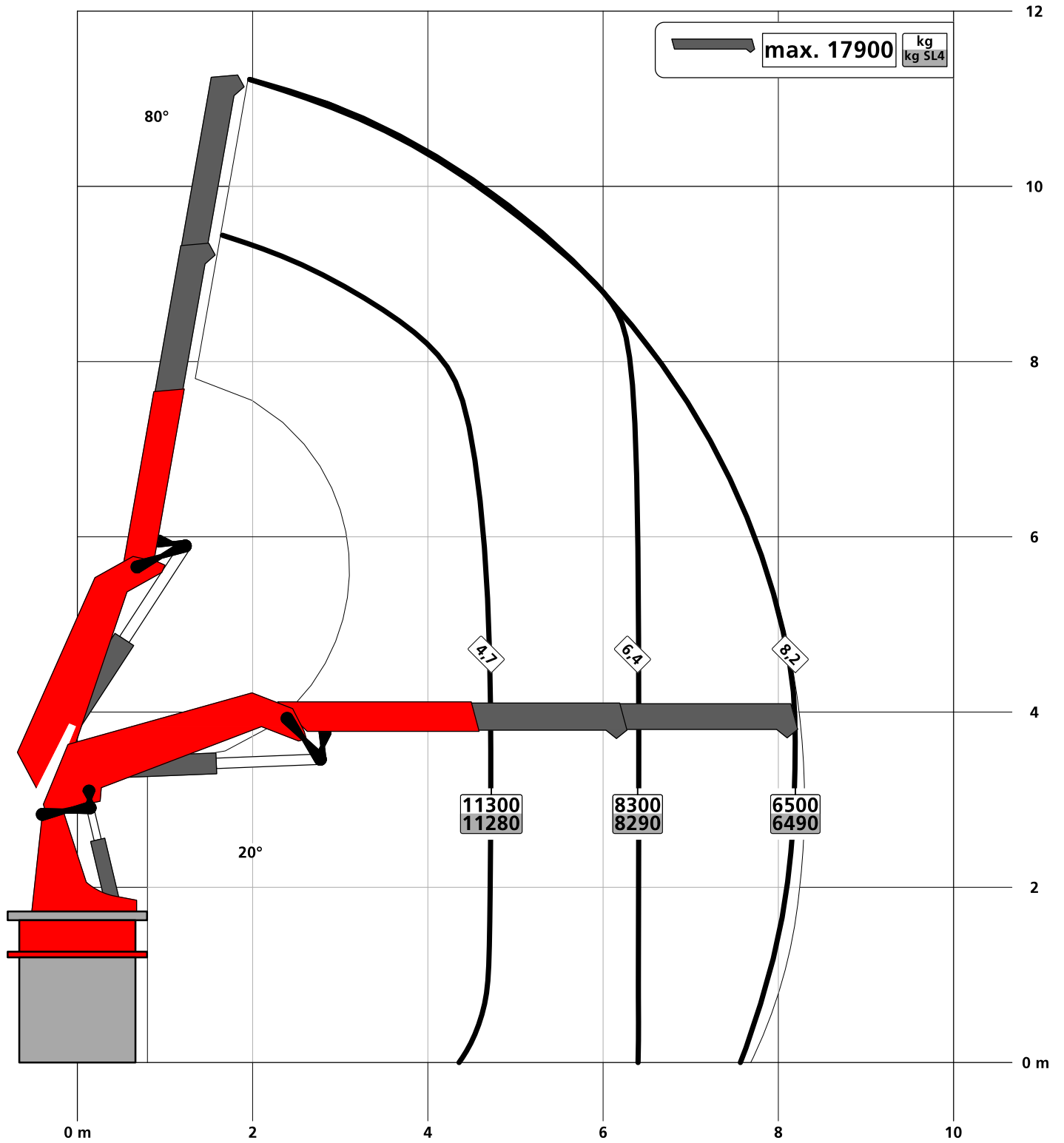
Edition 01/2019

EN

Palfinger EMEA GmbH
5203 Köstendorf-Salzburg/Austria
Moosmühlstraße 1
www.palfinger.com

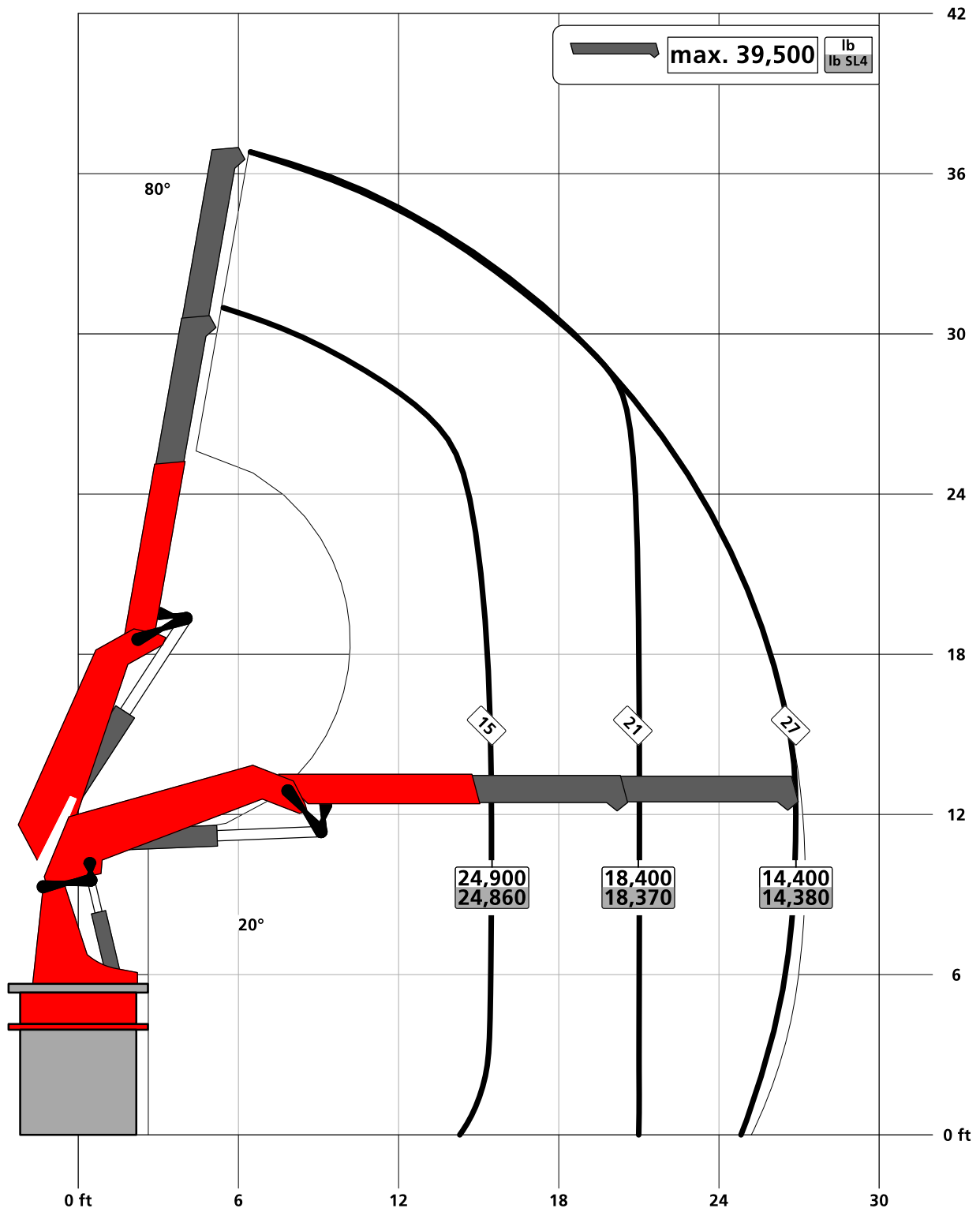
Page	
030	LIFTING CAPACITY DIAGRAM
030.01100	Lifting capacity diagram A
030.01100JI	Lifting capacity diagram A
030.01400	Lifting capacity diagram D
030.01400JI	Lifting capacity diagram D
030.01500	Lifting capacity diagram E
030.01500JI	Lifting capacity diagram E
030.01600	Lifting capacity diagram E PJ125CC E
030.01600JI	Lifting capacity diagram E PJ125CC E
030.01700	Lifting capacity diagram G
030.01700JI	Lifting capacity diagram G

Symbolic crane figure, indications at 20° main boom position & load arm in horizontal position

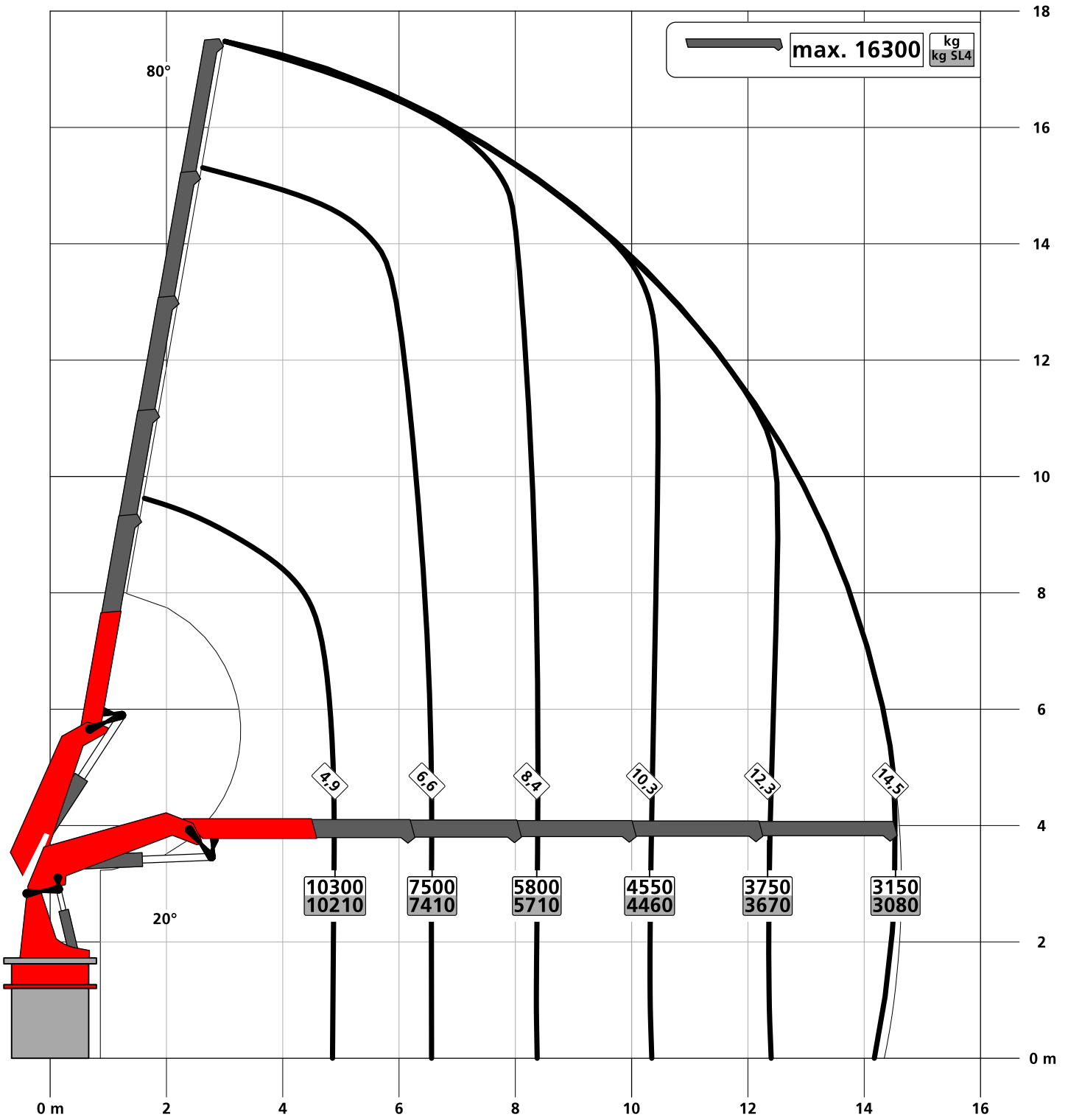


Lifting capacity diagram A

Symbolic crane figure, indications at 20° main boom position & load arm in horizontal position

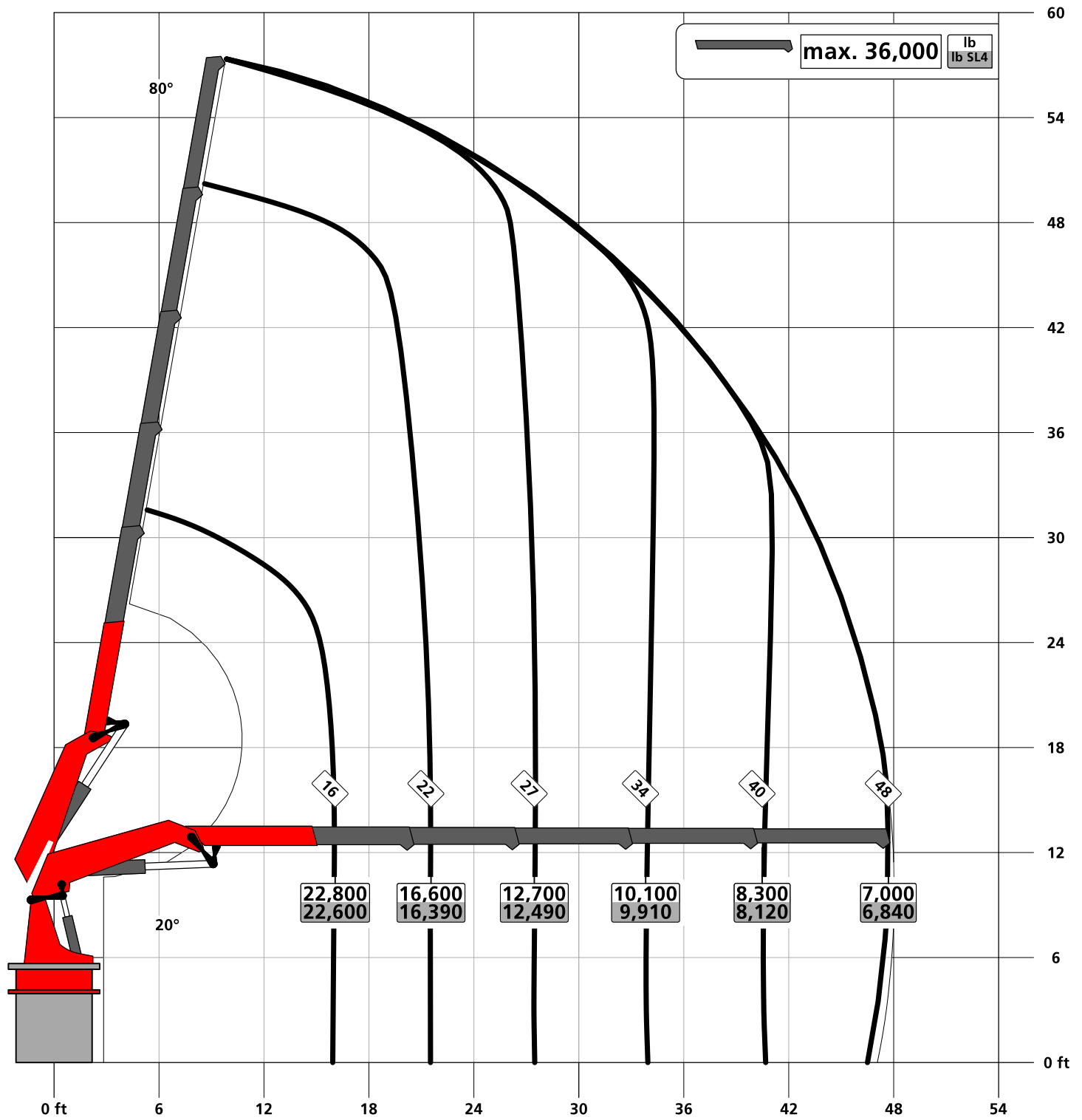


Symbolic crane figure, indications at 20° main boom position & load arm in horizontal position



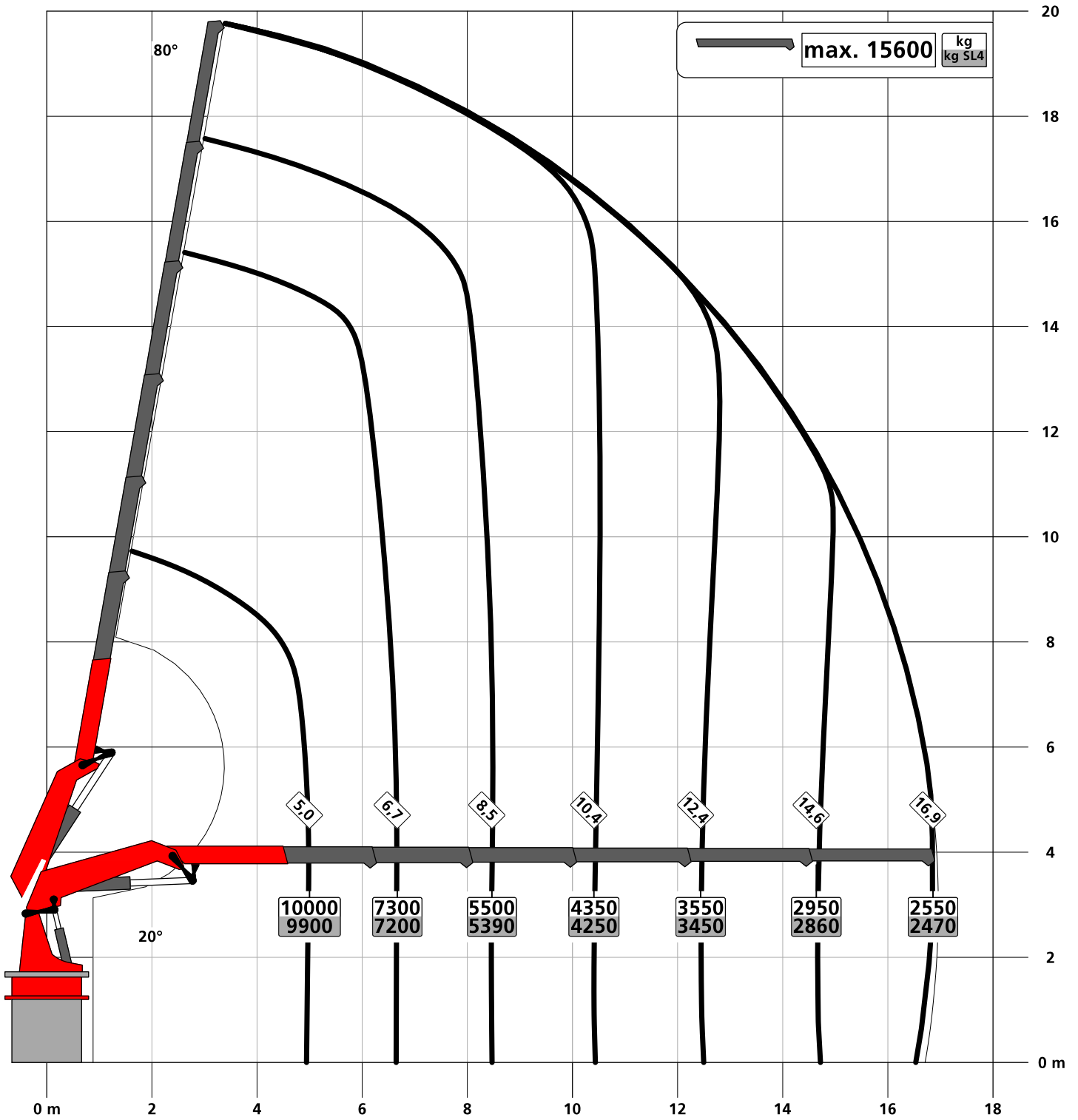
Lifting capacity diagram D

Symbolic crane figure, indications at 20° main boom position & load arm in horizontal position



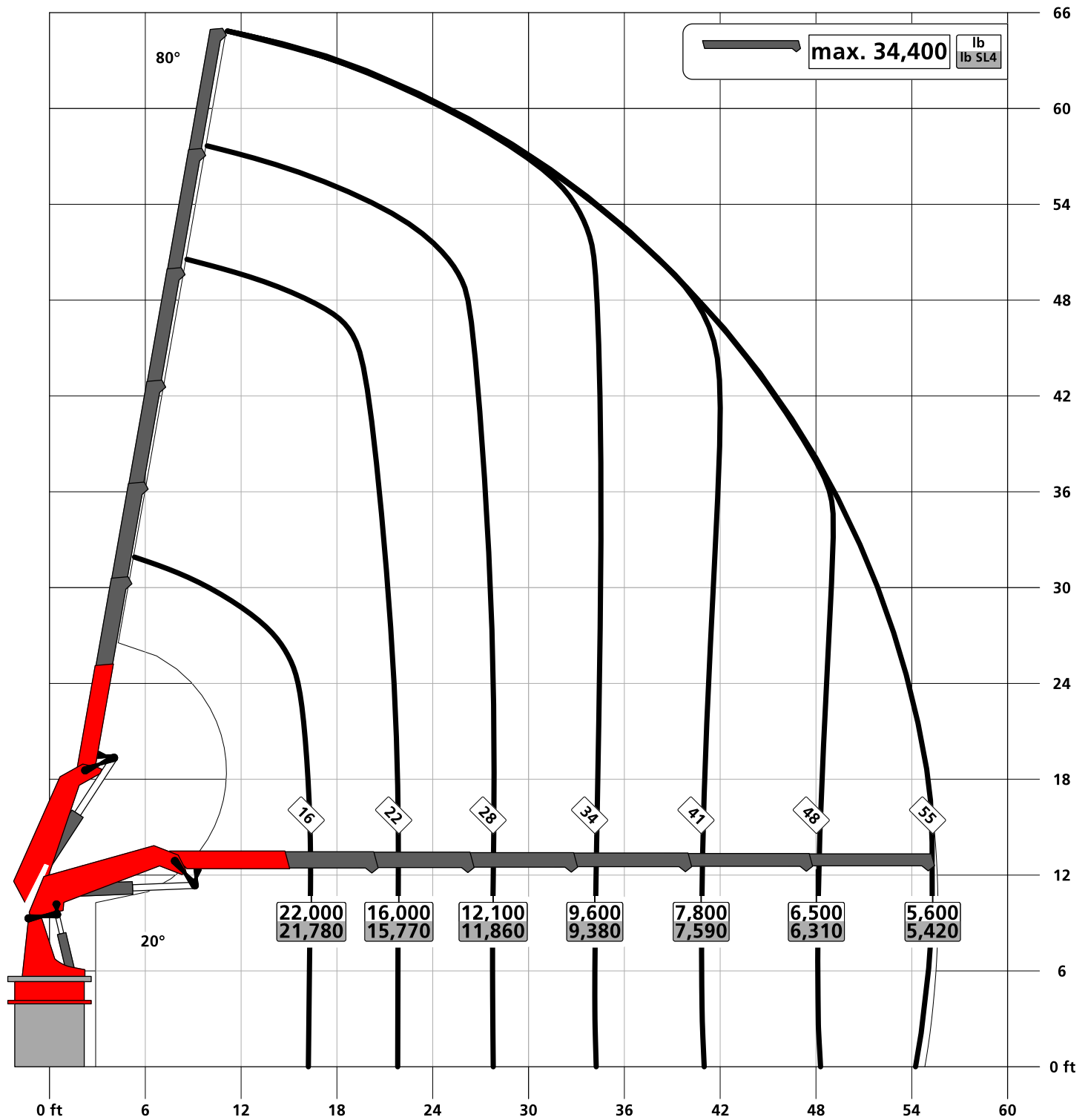
Subject to change, production tolerances have to be taken into account.

Symbolic crane figure, indications at 20° main boom position & load arm in horizontal position



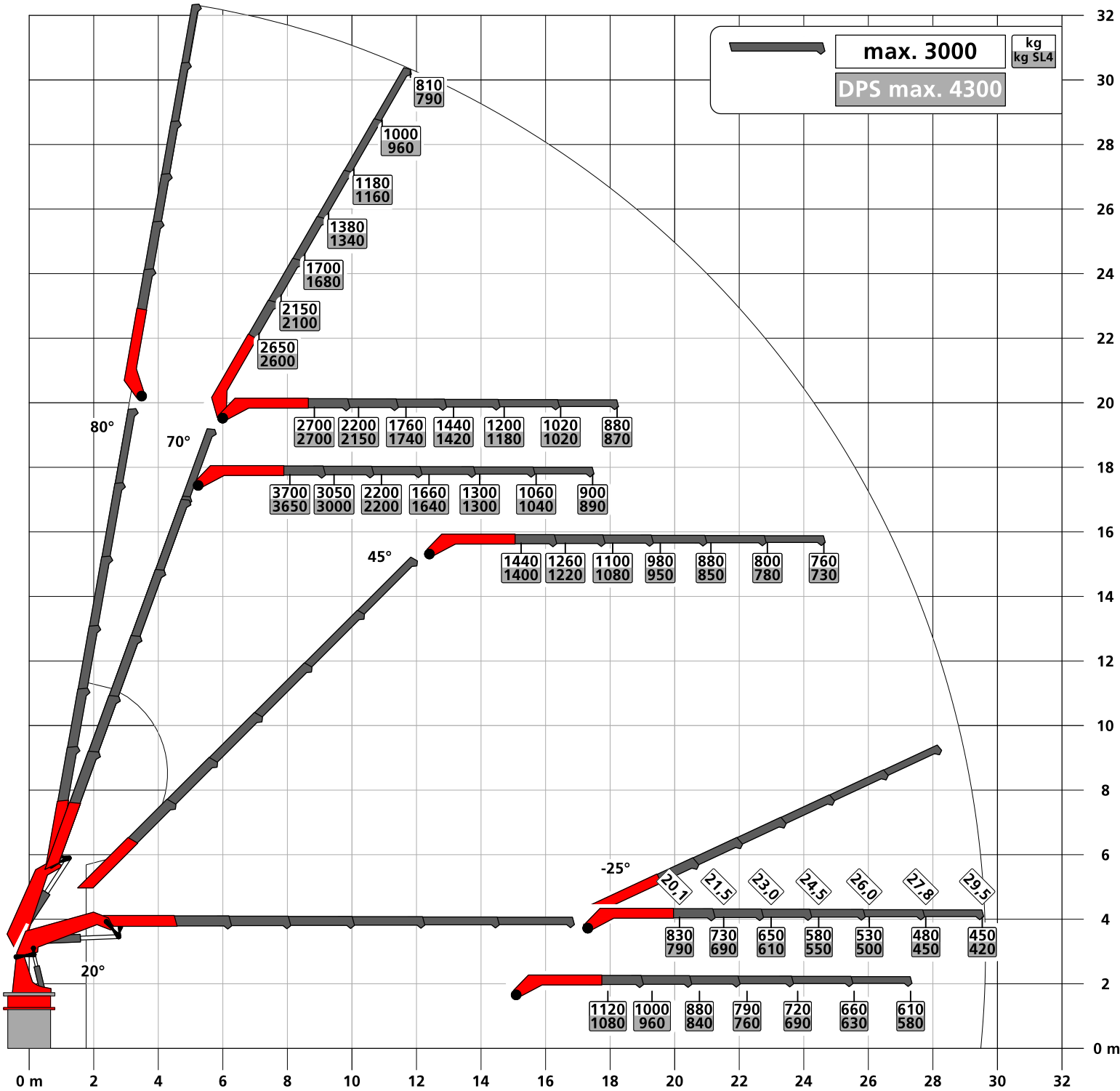
Lifting capacity diagram E

Symbolic crane figure, indications at 20° main boom position & load arm in horizontal position



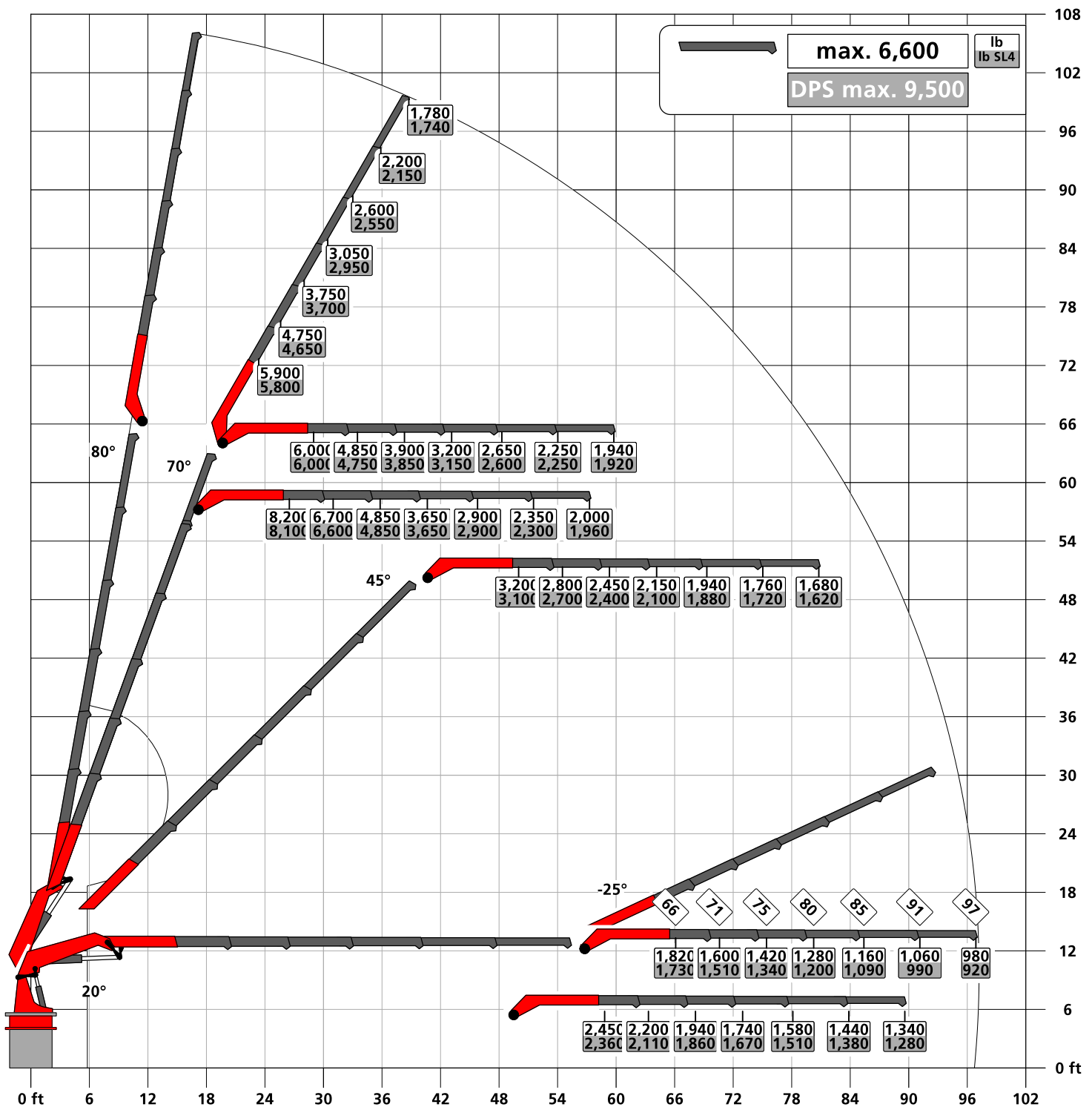
Subject to change, production tolerances have to be taken into account.

Symbolic crane figure, indications at 20° main boom position & load arm in horizontal position

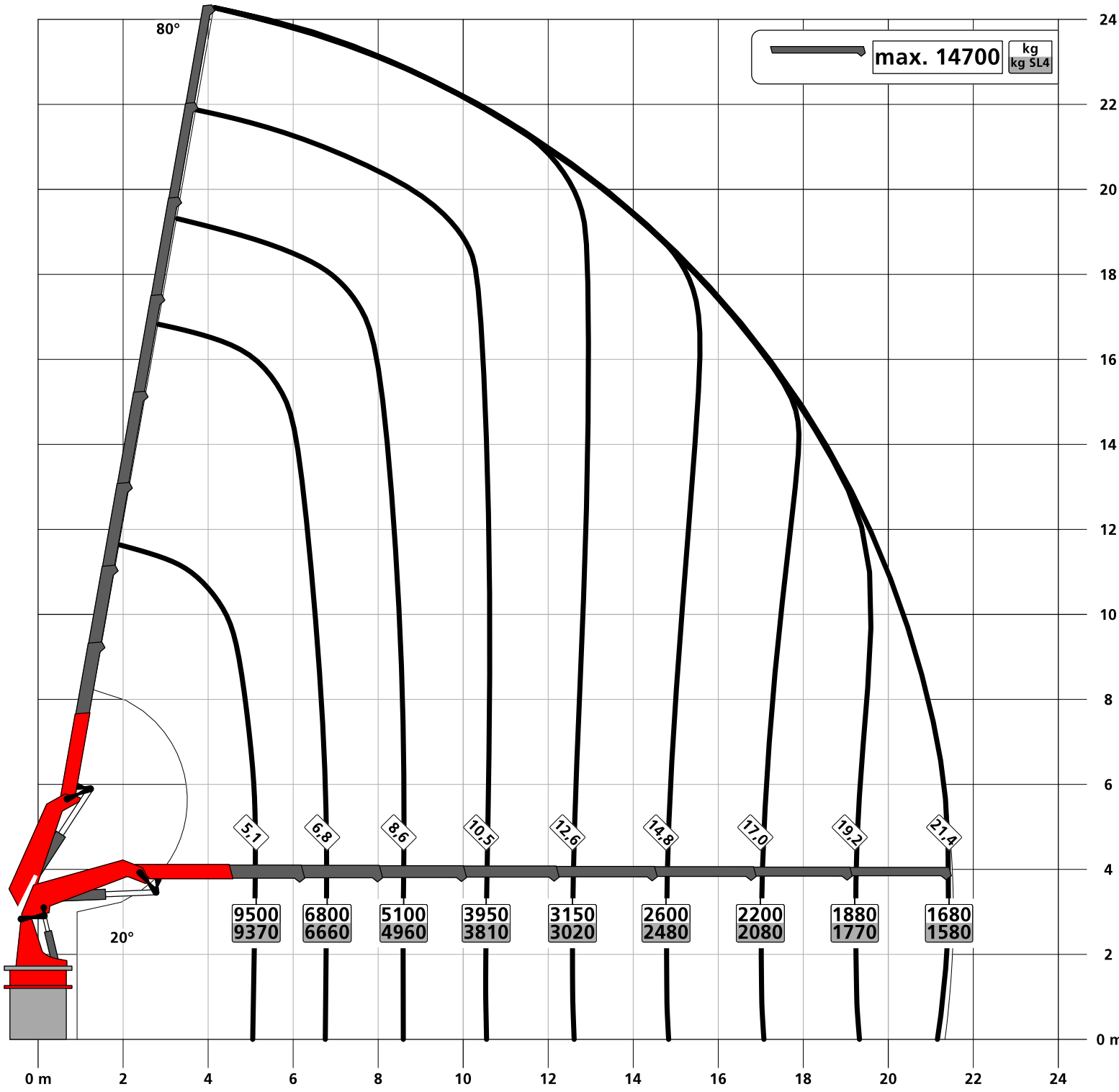


Subject to change, production tolerances have to be taken into account.

Symbolic crane figure, indications at 20° main boom position & load arm in horizontal position

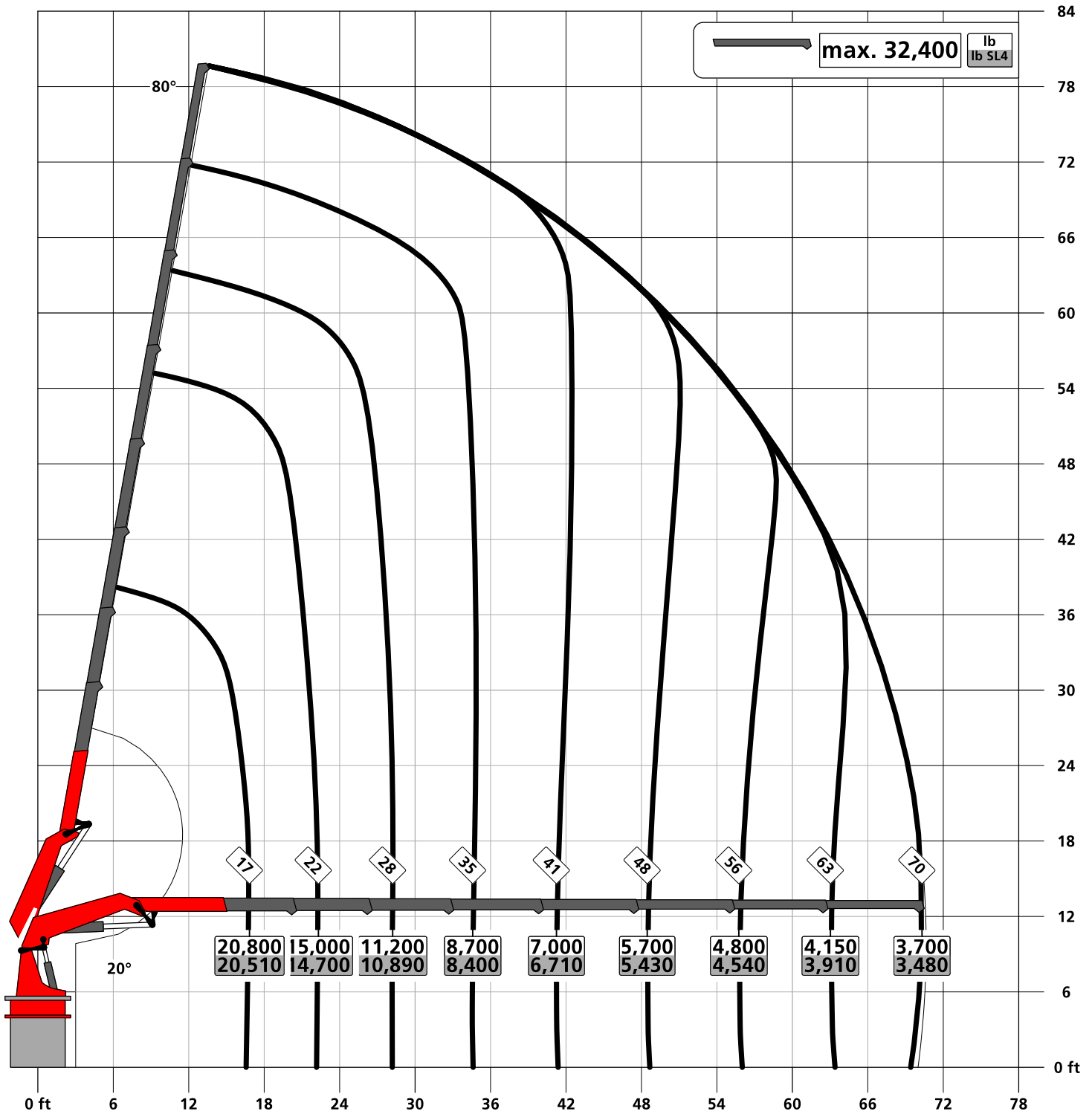


Symbolic crane figure, indications at 20° main boom position & load arm in horizontal position



Lifting capacity diagram G

Symbolic crane figure, indications at 20° main boom position & load arm in horizontal position



Subject to change, production tolerances have to be taken into account.

