

Technical Specification
Hydraulic crane
PK 200002L SH
(S601-SL-A)

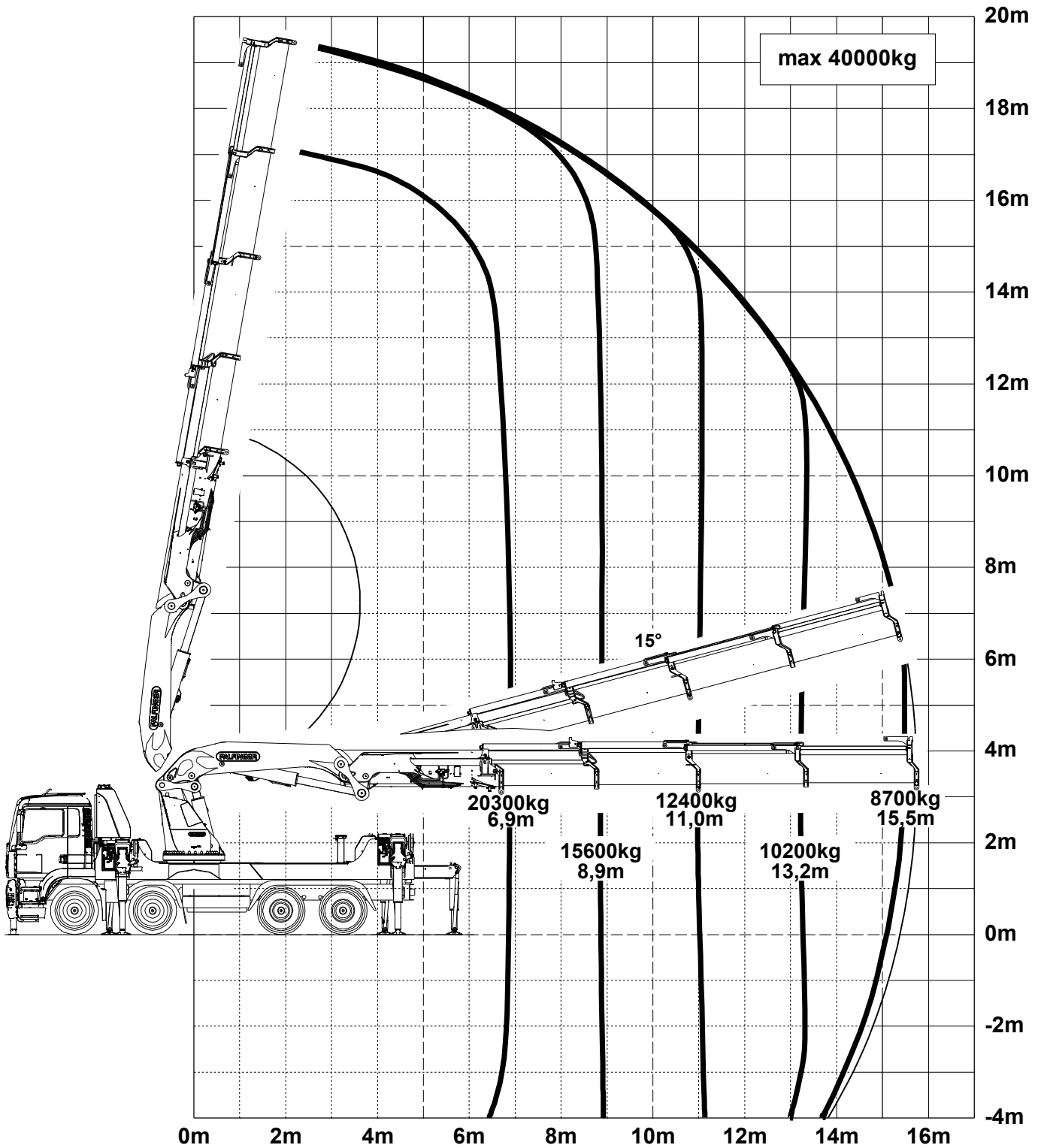
Edition 04/2013

EN

PALFINGER AG
Lamprechtshausener Bundesstraße 8
5101 Bergheim / Austria
www.palfinger.com

Page	
020	LIFTING CAPACITY DIAGRAM
020.01100	Lifting capacity diagram PK 20002L-SH C
020.01110	Lifting capacity diagram PK 20002L-SH C SL4
020.02100	Lifting capacity diagram PK 20002L-SH E
020.02110	Lifting capacity diagram PK 20002L-SH E SL4
020.03100	Lifting capacity diagram PK 20002L-SH G
020.03110	Lifting capacity diagram PK 20002L-SH G SL4
020.04100	Lifting capacity diagram PK 20002L-SH G SL4 PJ300L C DPS+
020.05100	Lifting capacity diagram PK 20002L-SH G SL4 PJ300L C DPS+
020.06100	Lifting capacity diagram PK 20002L-SH G SL4 PJ300L F DPS+
020.07100	Lifting capacity diagram PK 20002L-SH G SL4 PJ300L F DPS+
020.21000	Load capacity-Rope winch 4.5t
020.31000	Working area FPM PK 20002L-SH G SL4 PJ300L F DPS+

Subject to change, production tolerances have to be taken into account.



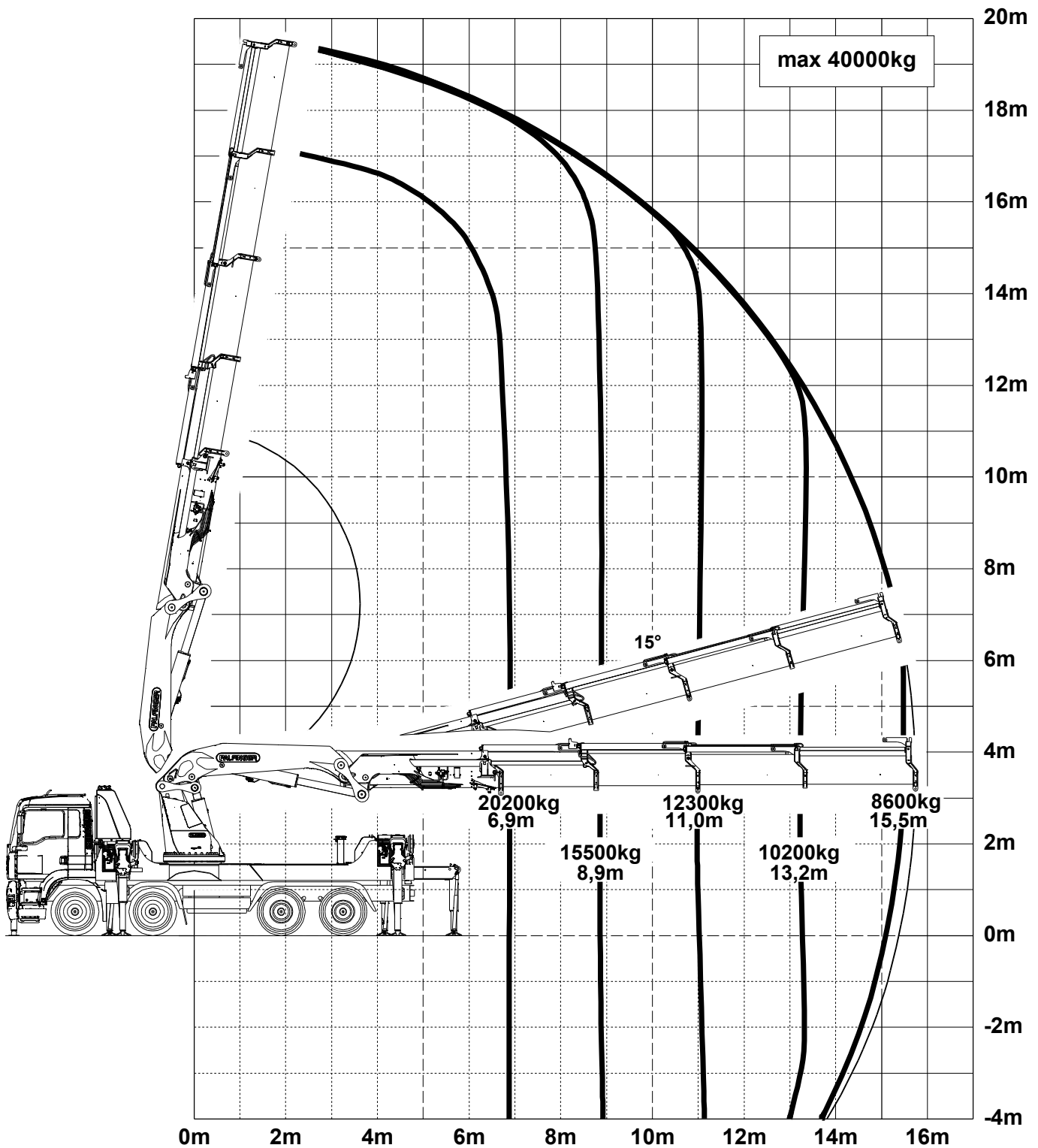
Symbolic crane figure, indications at 20° main boom position & load arm in horizontal position



For Rope winch load capacity refer to page
Page 020.21000

Lifting capacity diagram PK 20002L-SH C SL4

Subject to change, production tolerances have to be taken into account.



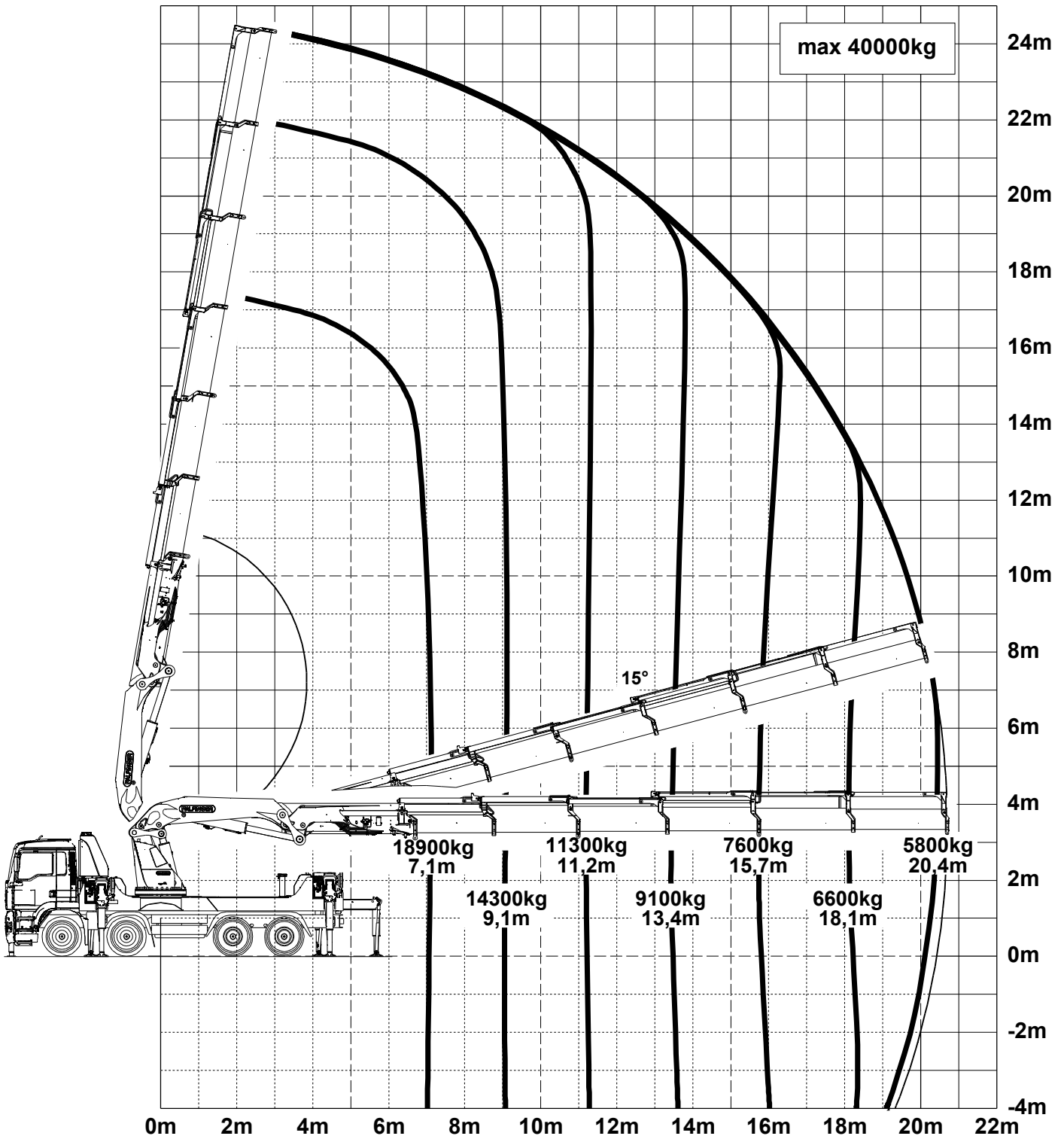
Hose-equipment SL4

Symbolic crane figure, indications at 20° main boom position & load arm in horizontal position



For Rope winch load capacity refer to page
Page 020.21000

Subject to change, production tolerances have to be taken into account.



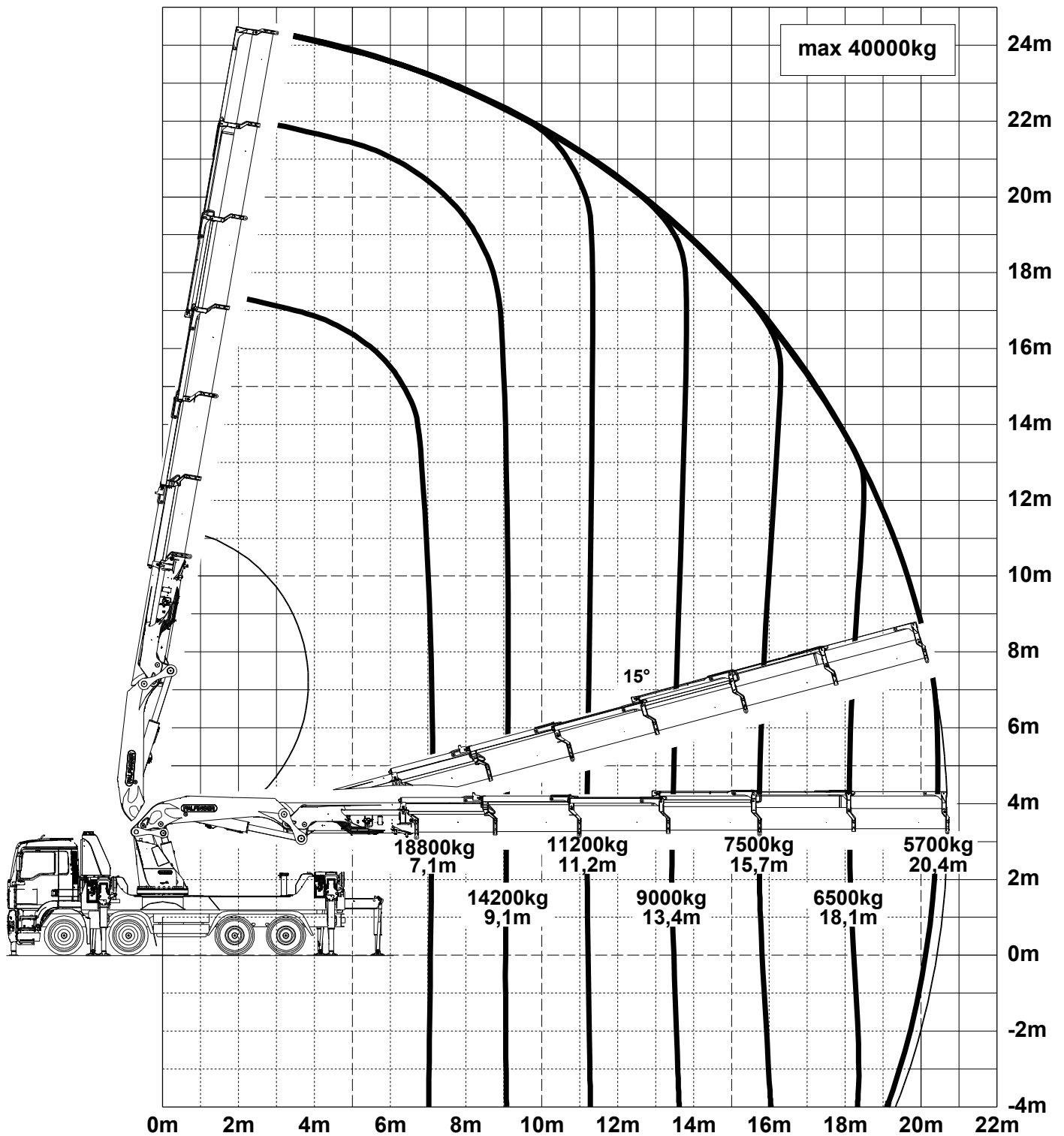
Symbolic crane figure, indications at 20° main boom position & load arm in horizontal position



For Rope winch load capacity refer to page
Page 020.21000

Lifting capacity diagram PK 20002L-SH E SL4

Subject to change, production tolerances have to be taken into account.



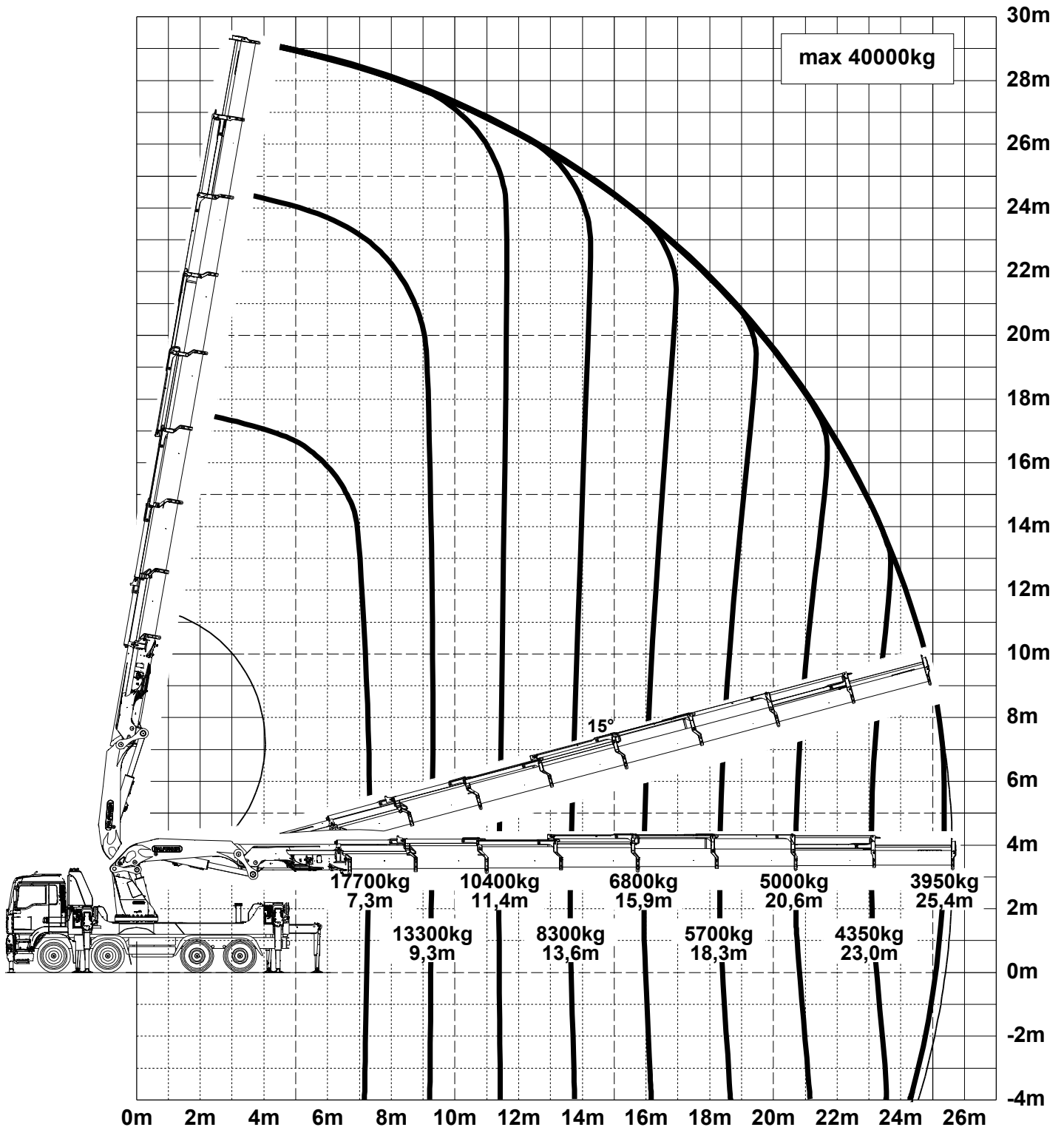
Hose-equipment SL4

Symbolic crane figure, indications at 20° main boom position & load arm in horizontal position



For Rope winch load capacity refer to page
Page 020.21000

Subject to change, production tolerances have to be taken into account.

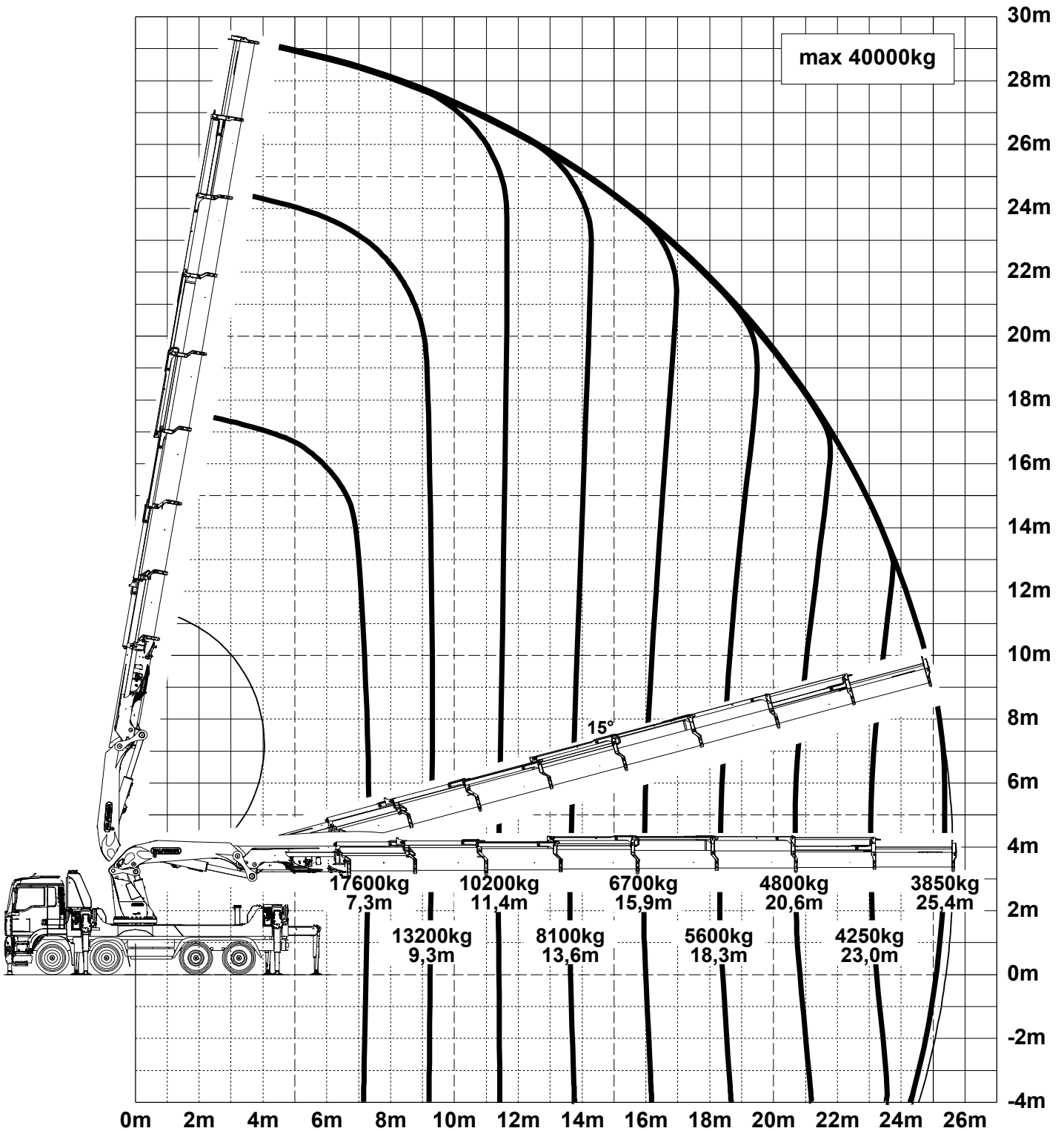


Symbolic crane figure, indications at 20° main boom position & load arm in horizontal position



For Rope winch load capacity refer to page
Page 020.21000

Subject to change, production tolerances have to be taken into account.



Hose-equipment SL4

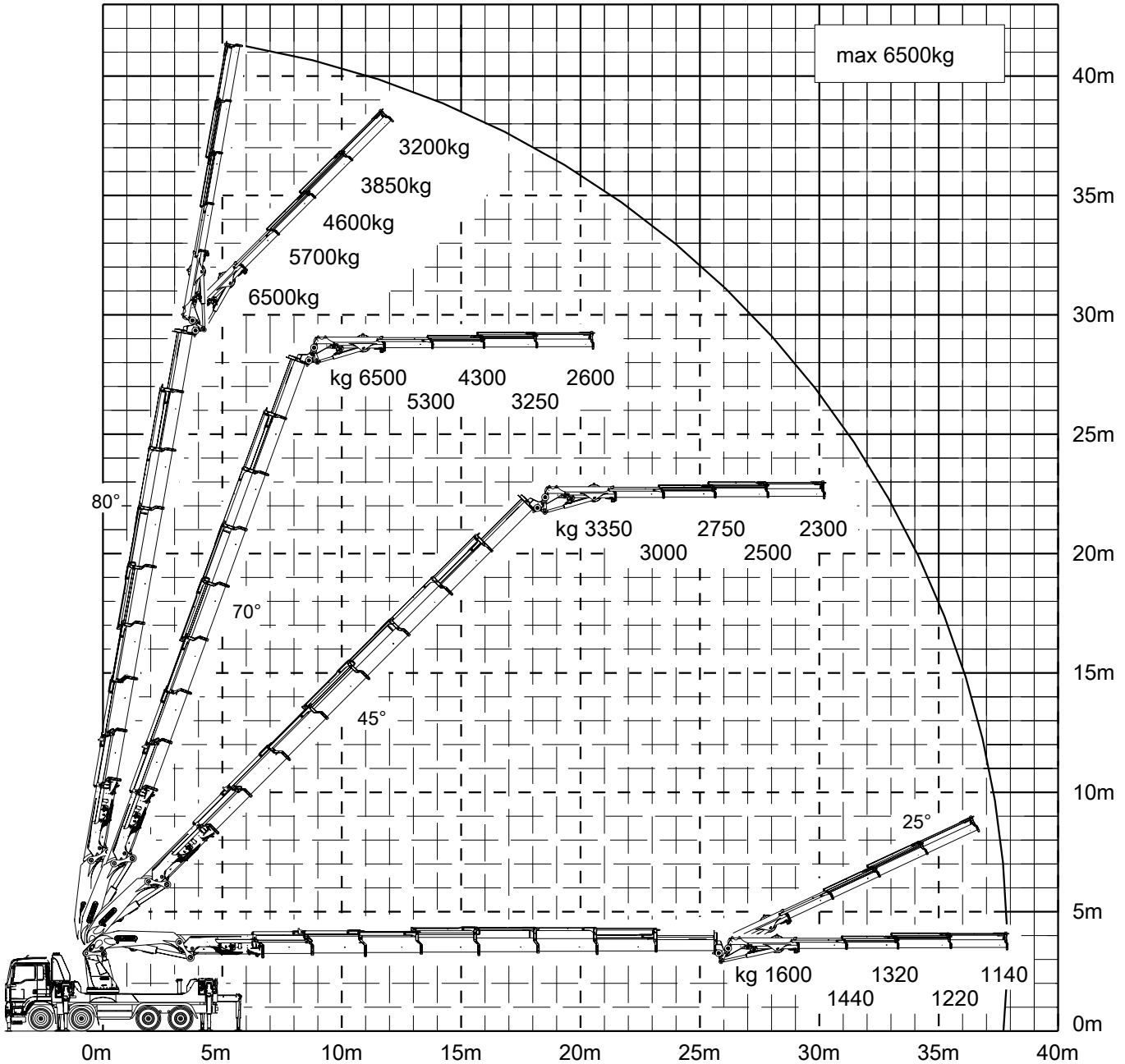
Symbolic crane figure, indications at 20° main boom position & load arm in horizontal position



For Rope winch load capacity refer to page
Page 020.21000

Subject to change, production tolerances have to be taken into account.

DPS plus
Dual Power System



Boom extension G(8) fully extended !

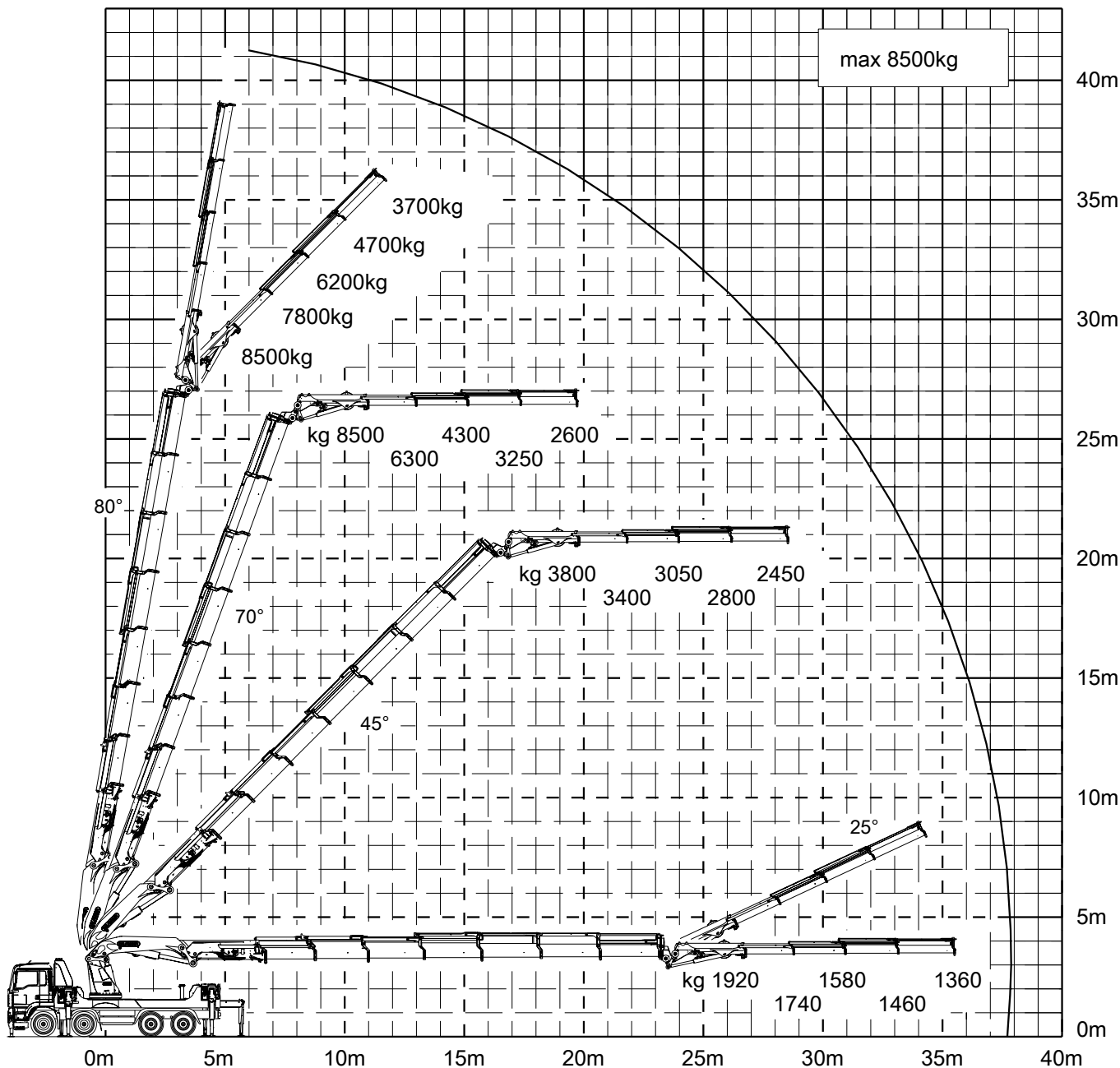
The load capacities as per chart are not reached when using hose equipment on the Fly-Jib.
Symbolic crane figure, indications at 20° main boom position & load arm in horizontal position



For Rope winch load capacity refer to page
Page 020.21000

Subject to change, production tolerances have to be taken into account.

DPS plus
Dual Power System



Boom extension G(8) fully retracted !

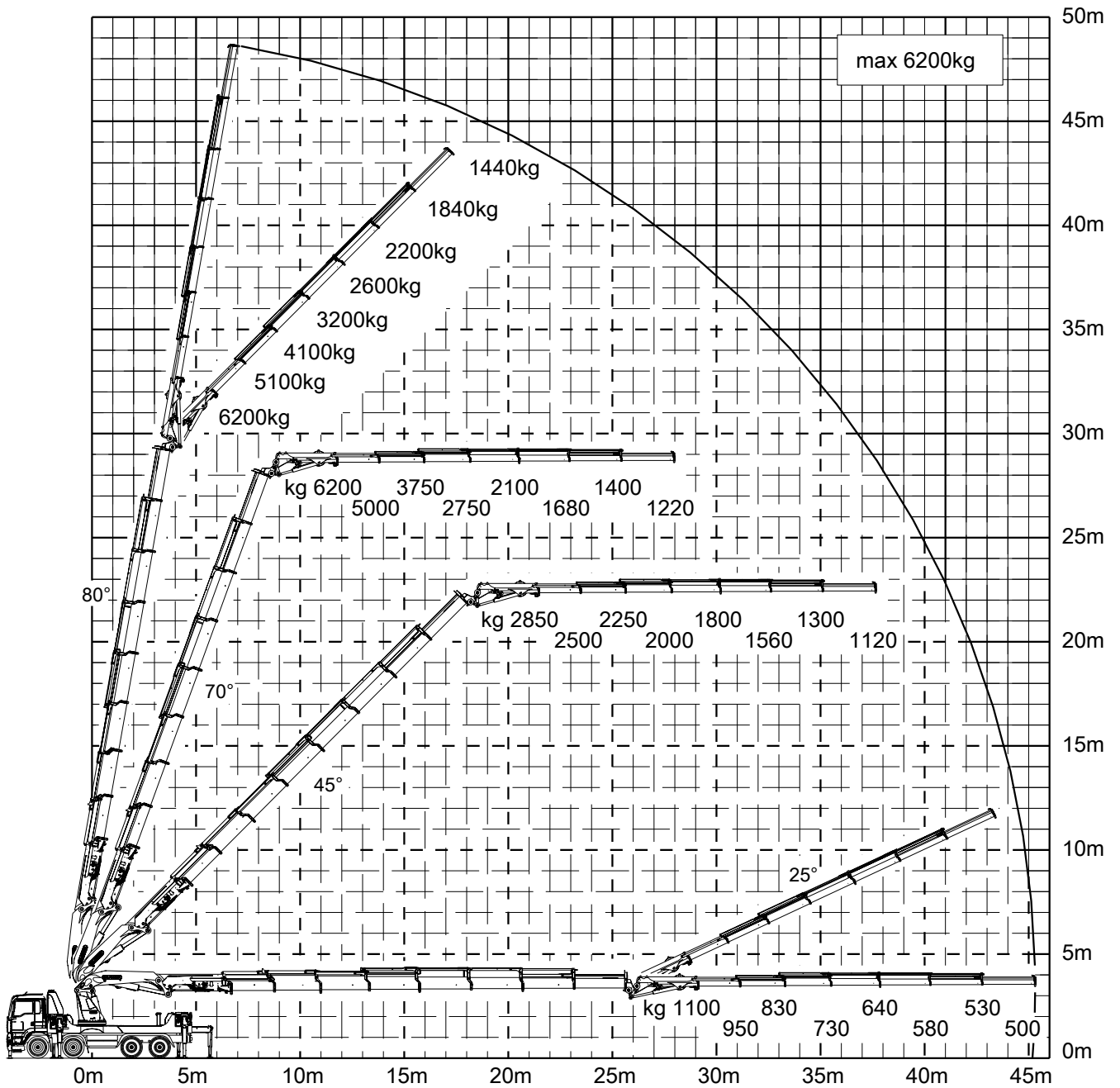
The load capacities as per chart are not reached when using hose equipment on the Fly-Jib.
Symbolic crane figure, indications at 20° main boom position & load arm in horizontal position



For Rope winch load capacity refer to page
Page 020.21000

Subject to change, production tolerances have to be taken into account.

DPS plus
Dual Power System



Boom extension G(8) fully extended !

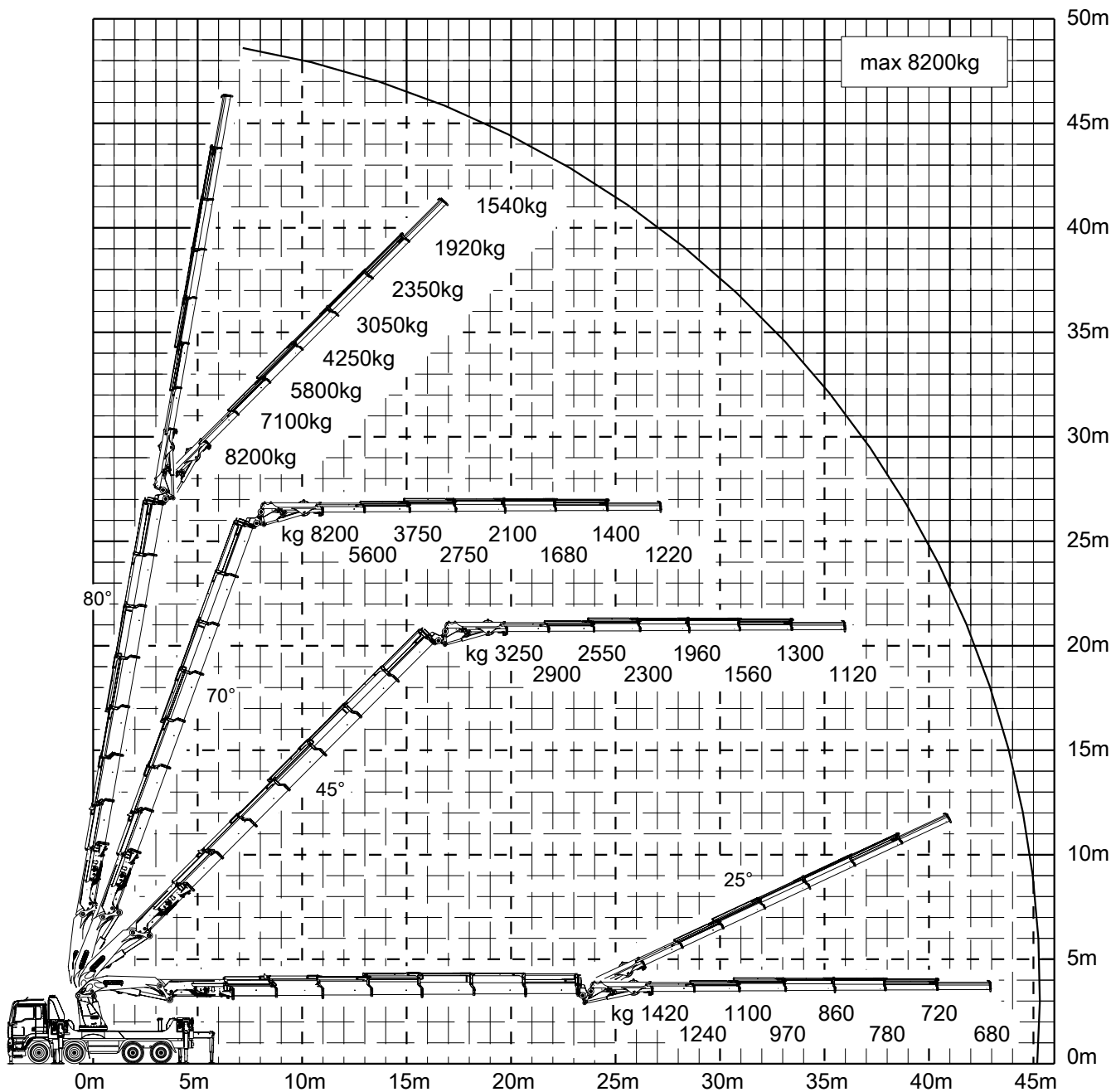
The load capacities as per chart are not reached when using hose equipment on the Fly-Jib.
Symbolic crane figure, indications at 20° main boom position & load arm in horizontal position



For Rope winch load capacity refer to page
Page 020.21000

Subject to change, production tolerances have to be taken into account.

DPS plus
Dual Power System



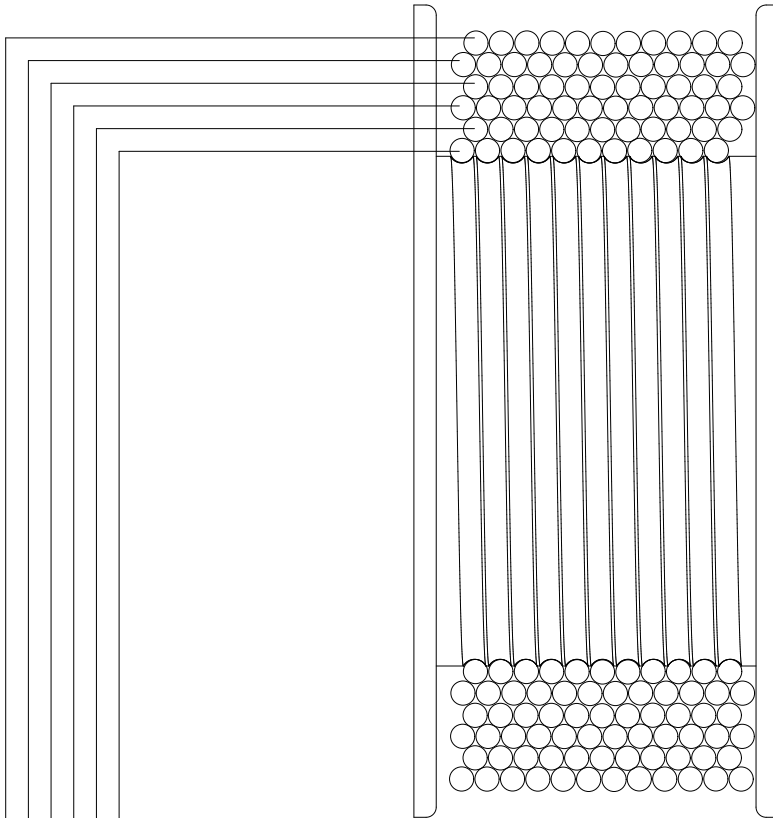
Boom extension G(8) fully retracted !


The load capacities as per chart are not reached when using hose equipment on the Fly-Jib.
Symbolic crane figure, indications at 20° main boom position & load arm in horizontal position

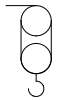


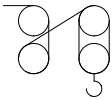
For Rope winch load capacity refer to page
Page 020.21000

Subject to change, production tolerances have to be taken into account.



Strands	
1STRAN	
	
Load capacity	Wire reception
1 4500 kg [9,920 lb]	22,4 m [73'5"]
2 4150 kg [9,150 lb]	46,7 m [153'2"]
3 3830 kg [8,440 lb]	73,0 m [239'5"]
4 3560 kg [7,850 lb]	101,3 m [332'3"]
5 3330 kg [7,340 lb]	120,0 m [393'7"]
6 -	-

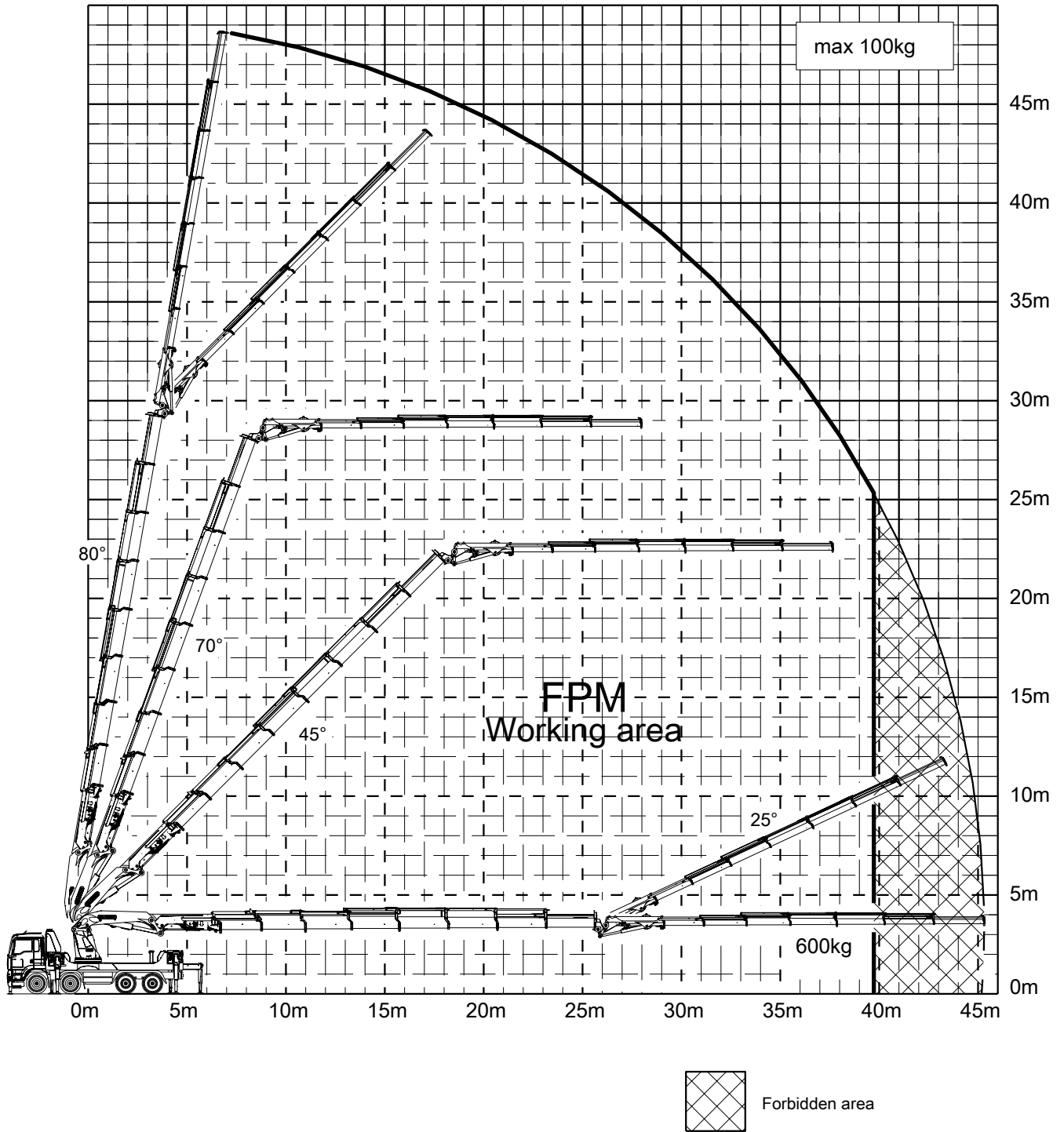
Strands	
2STRAN	
	
Load capacity	Wire reception
9000 kg [19,840 lb]	22,4 m [73'5"]
8300 kg [18,300 lb]	46,7 m [153'2"]
7700 kg [16,975 lb]	73,0 m [239'5"]
7120 kg [15,700 lb]	101,3 m [332'3"]
6660 kg [14,680 lb]	120,0 m [393'7"]
-	-

Strands	
4STRAN	
	
Load capacity	Wire reception
18000 kg [39,680 lb]	22,4 m [73'5"]
16600 kg [36,600 lb]	46,7 m [153'2"]
15330 kg [33,800 lb]	73,0 m [239'5"]
14240 kg [31,400 lb]	101,3 m [332'3"]
13320 kg [29,380 lb]	120,0 m [393'7"]
-	-

Weights of load handling devices are part of the load lifted and must be deducted from the capacity.
Weight of the load handling equipment must be deducted from the lifting capacity.

Subject to change, production tolerances have to be taken into account.

Personal fall protection mode FPM



The load capacities as per chart are not reached when using hose equipment on the Fly-Jib.
 Symbolic crane figure, indications at 20° main boom position & load arm in horizontal position

