

# LOADER CRANE PK 165.002 TEC 7

HOME





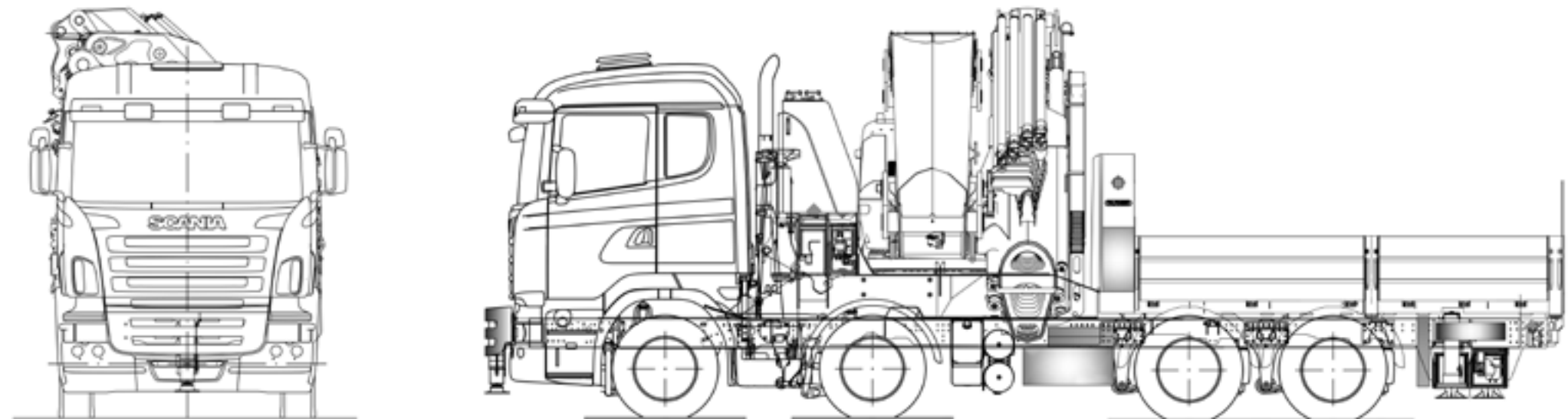
# LOADER CRANE PK 165.002 TEC 7

## OVERVIEW

### GENERAL

#### LIGHTWEIGHT DESIGN MEETS HIGH-TECH CONTROL SYSTEMS

- Gross vehicle weight of less than 32ton - fully equipped
- High mobility due to the mounting on standard truck chassis
- Very stiff and light boom system thanks to P-Profile
- Hydraulic lifting height with fly-jib of approximately 40 metres
- Additional applications with Power Link Plus
- More efficiency with fly-jib due to DPS Plus and DPS-C
- Maximum utilisation of the working range thanks to extended HPSC
- Increased comfort and safety due to Soft Stop



# LOADER CRANE PK 165.002 TEC 7

## OVERVIEW

### TECHNICAL SPECIFICATIONS

#### TECHNICAL SPECIFICATIONS (EN 12999 HC1 HD5/S1)

Max. lifting moment	124.8 mt/1224.3 kNm	903020 ft.lb
Max. lifting capacity	32000 kg/313.9 kN	70600 lb
Max. hydraulic outreach	21.0 m	68' 10"
Max. outreach (with fly-jib)	36.1 m	118' 4"
Slewing angle	continuous	
Slewing torque	12.0 mt/117.8 kNm	86880 ft.lb
Stabiliser spread	10.0 m	32' 10"
Width folded	2.55 m	8' 4"
Max. operating pressure	385 bar	5584 psi
Recommended pump capacity	2 x 120 l/min	31.7 US gpm
Dead weight: (HYA C R4X)	11610 kg	25600 lb

# LOADER CRANE PK 165.002 TEC 7

HOME

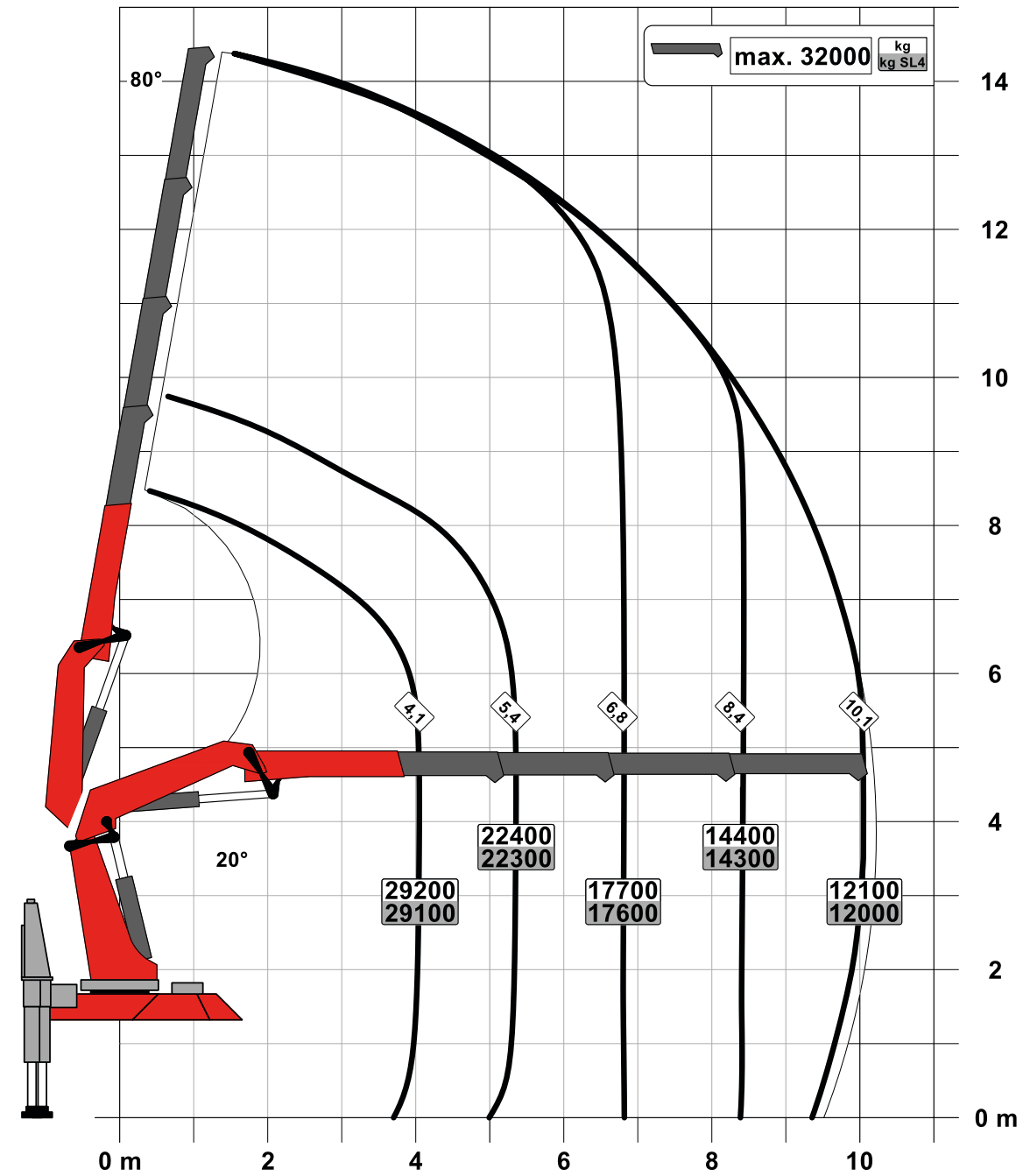
OVERVIEW

SPECIAL FEATURES

VIDEO

ABOUT US

**C**

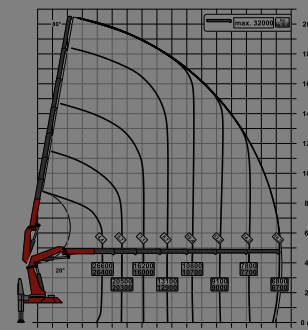


POSSIBLE USES

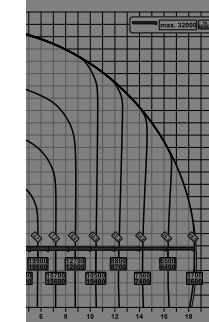
**E**



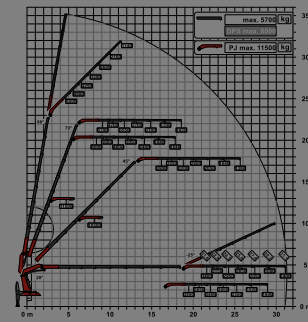
**F**



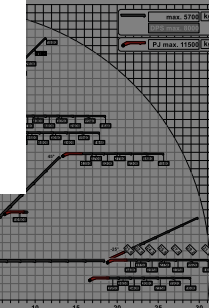
**H**



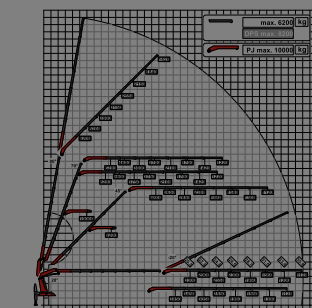
**PJ 240 DPS PLUS**



**DPS-C**

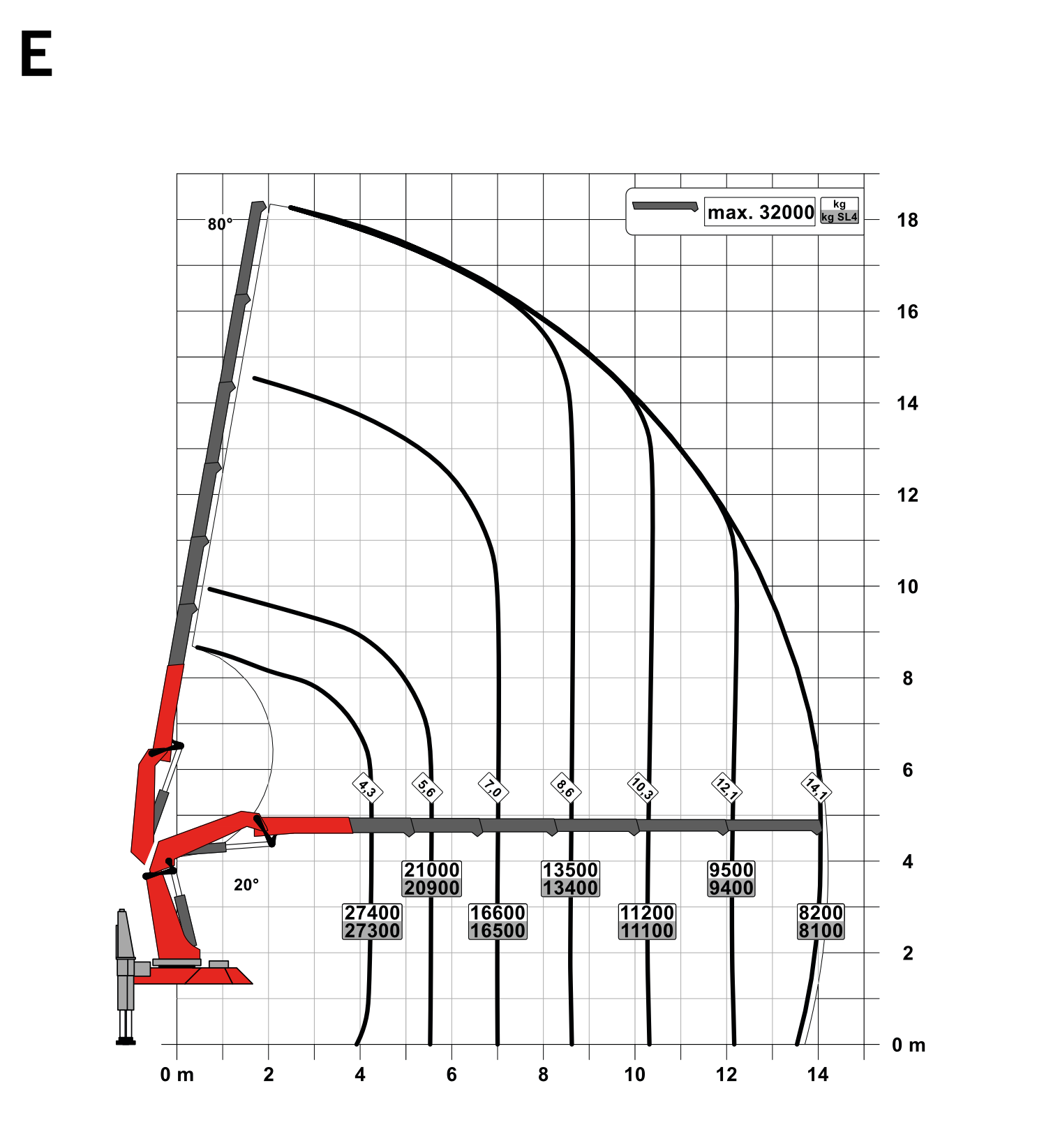


**PJ 300L DPS-C**

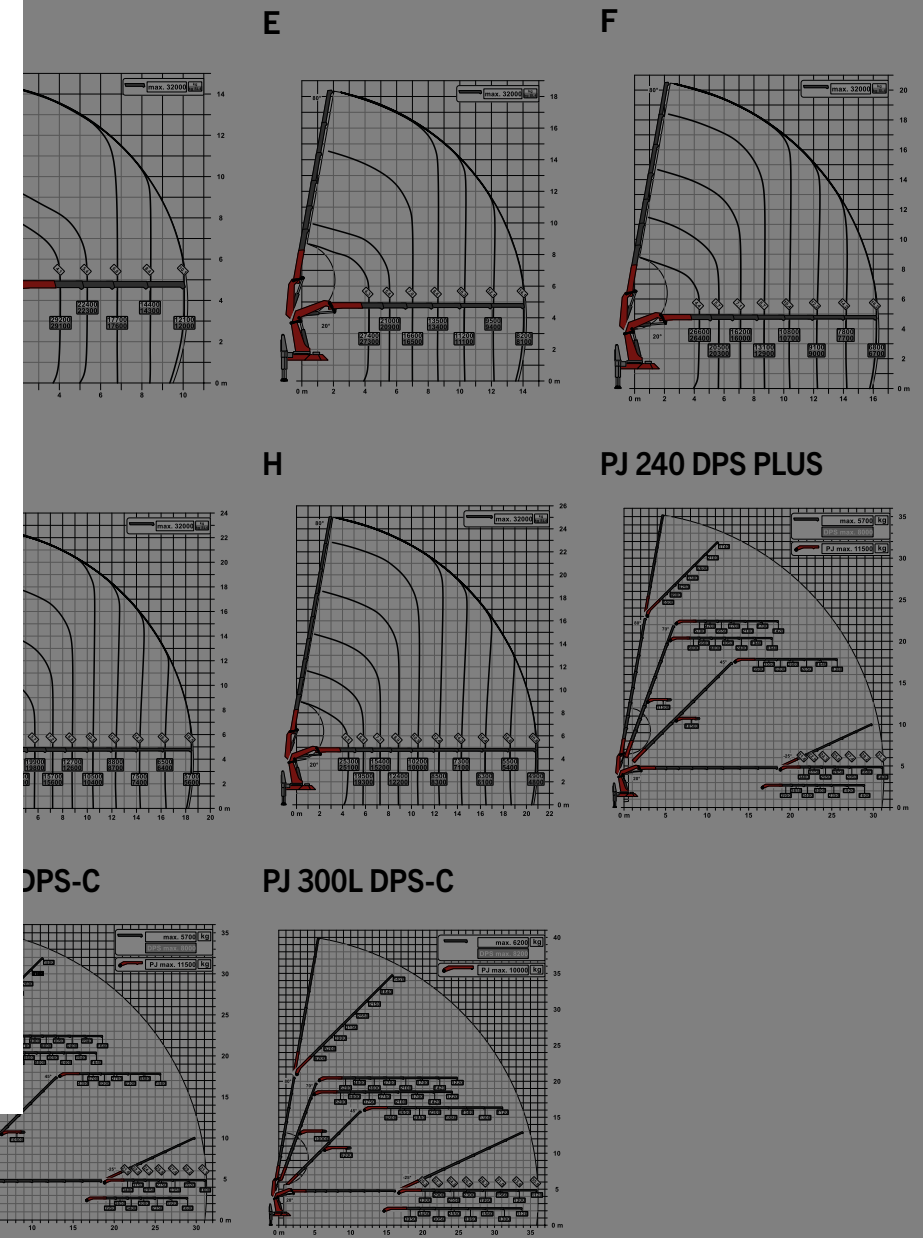


# LOADER CRANE PK 165.002 TEC 7

- HOME
- OVERVIEW**
- SPECIAL FEATURES
- VIDEO
- ABOUT US



POSSIBLE USES



# LOADER CRANE PK 165.002 TEC 7

HOME

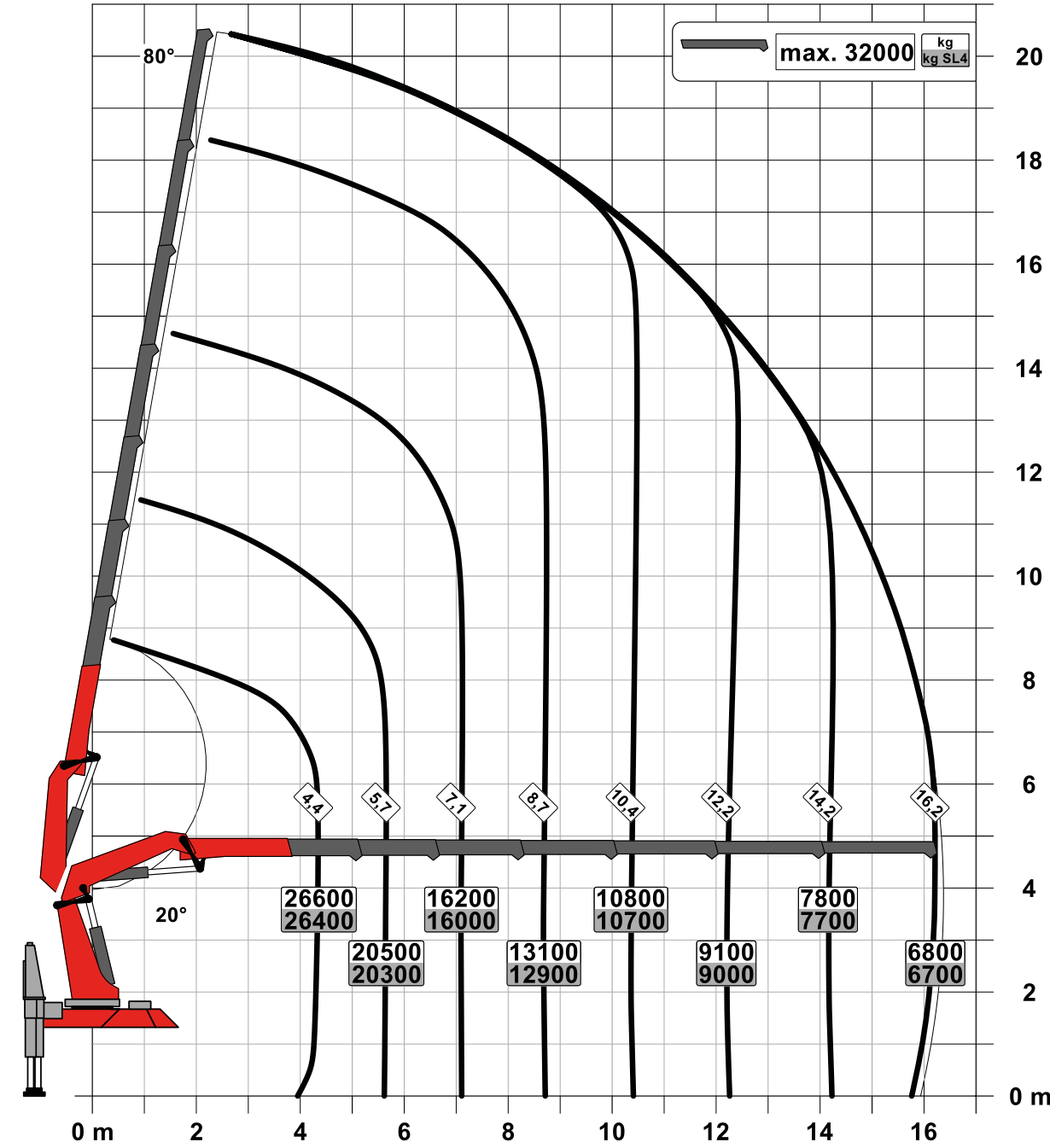
OVERVIEW

SPECIAL FEATURES

VIDEO

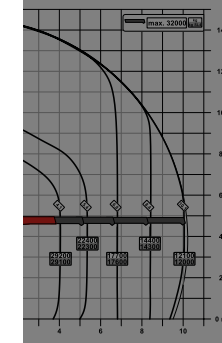
ABOUT US

**F**

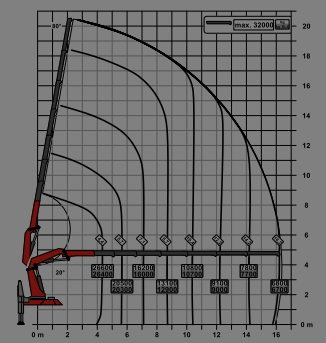


POSSIBLE USES

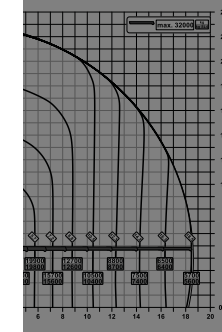
**E**



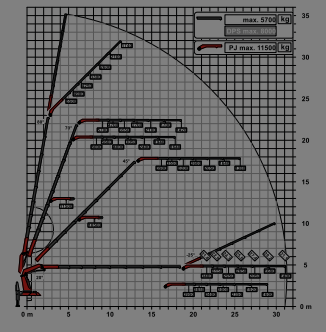
**F**



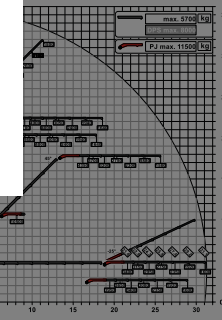
**H**



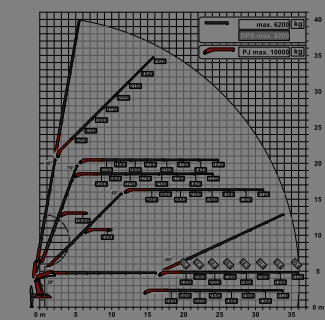
**PJ 240 DPS PLUS**



**DPS-C**



**PJ 300L DPS-C**



# LOADER CRANE PK 165.002 TEC 7

HOME

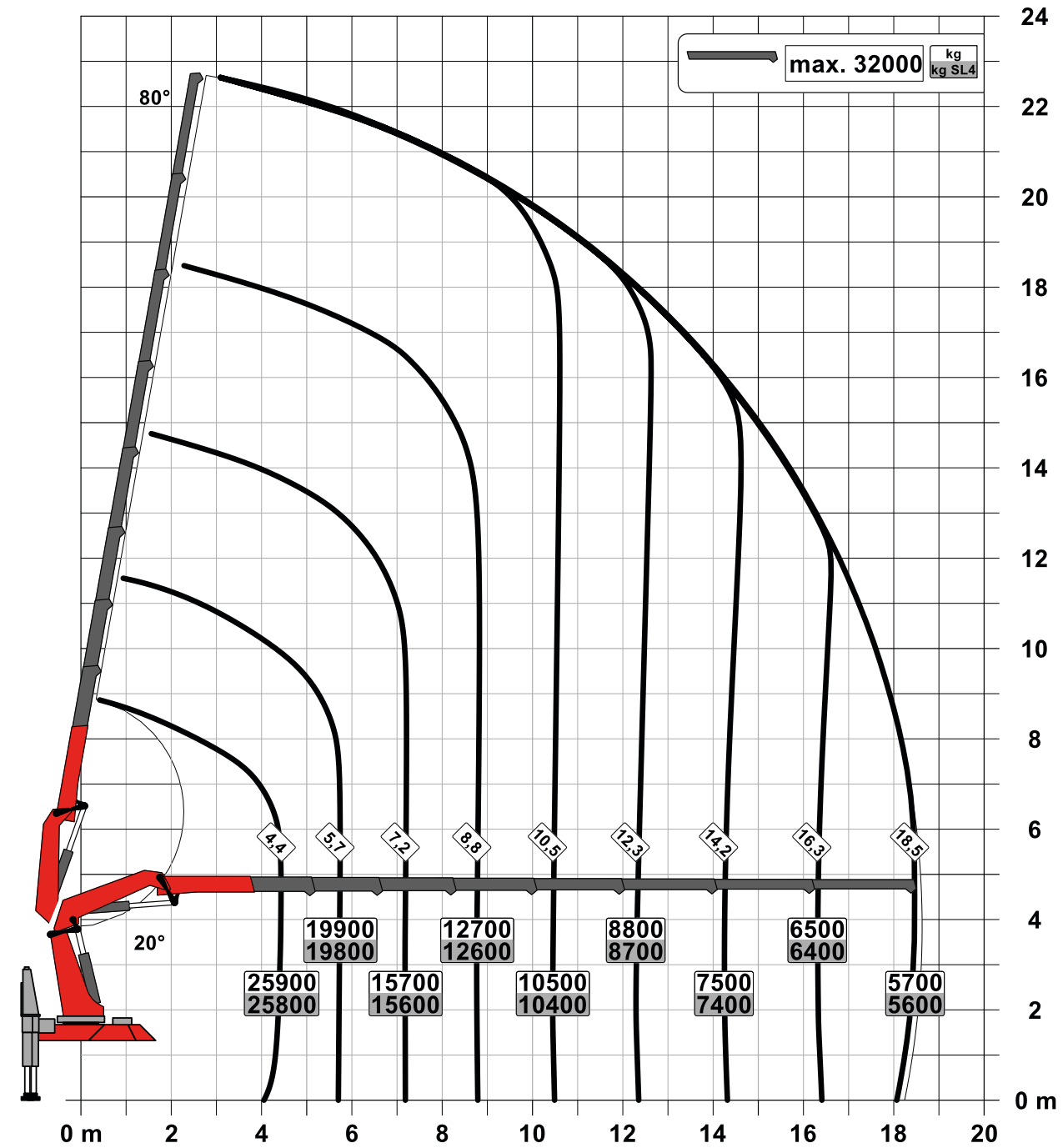
OVERVIEW

SPECIAL FEATURES

VIDEO

ABOUT US

**G**

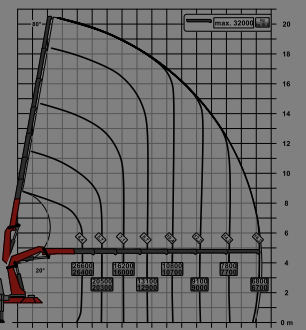


POSSIBLE USES

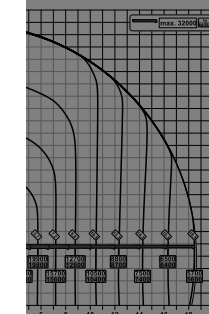
**E**



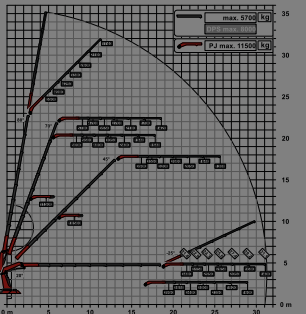
**F**



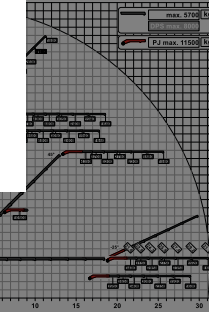
**H**



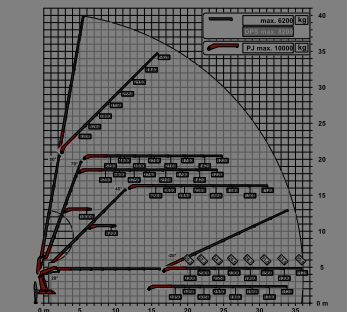
**PJ 240 DPS PLUS**



**DPS-C**



**PJ 300L DPS-C**





# LOADER CRANE PK 165.002 TEC 7

HOME

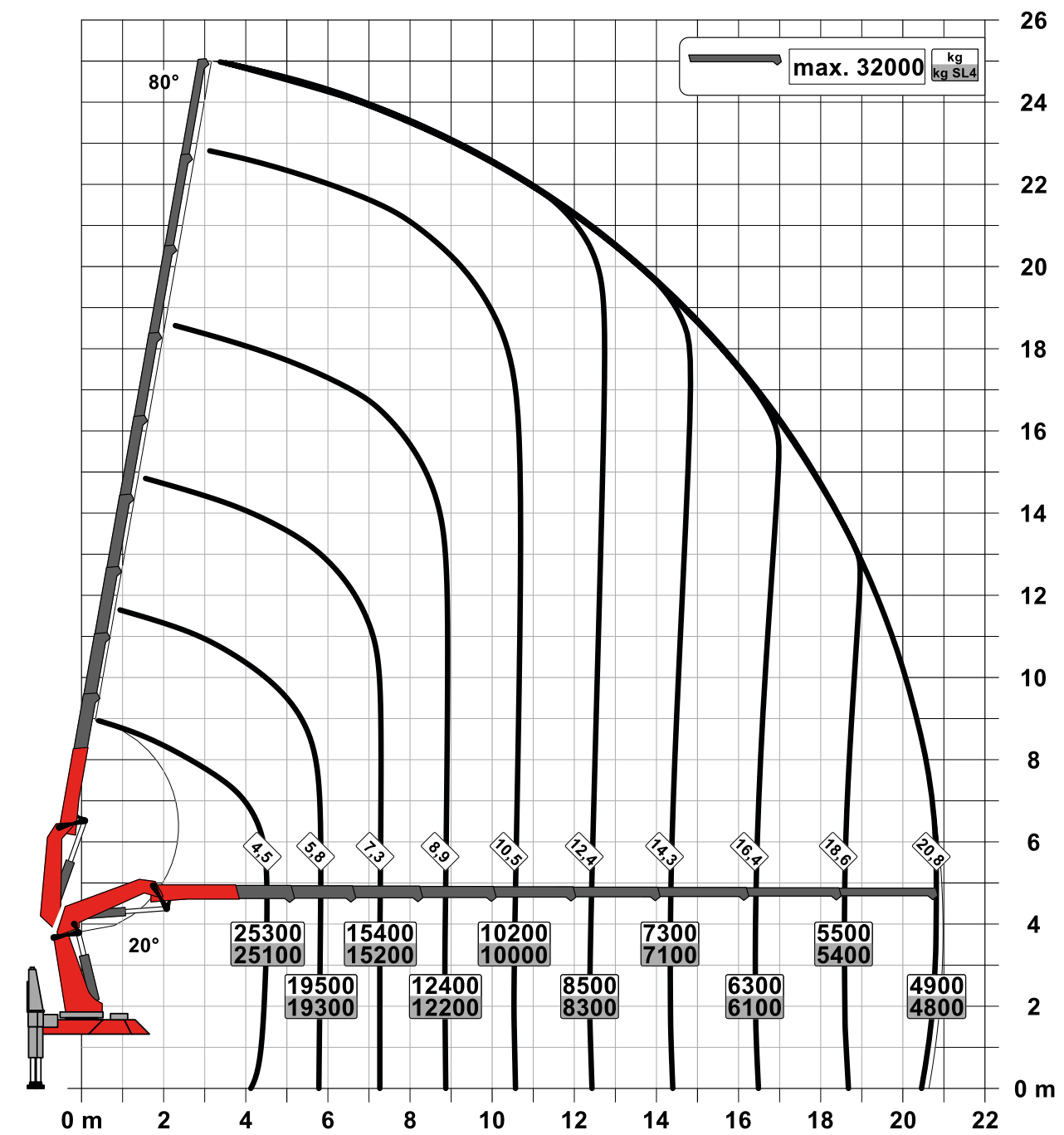
OVERVIEW

SPECIAL FEATURES

VIDEO

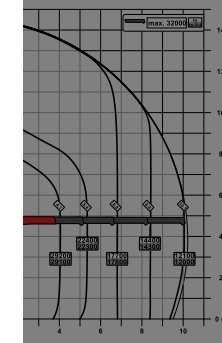
ABOUT US

**H**

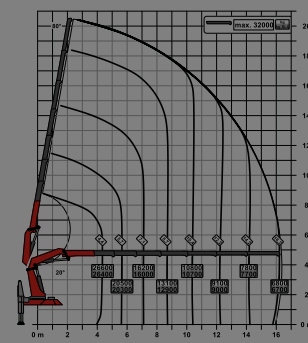


POSSIBLE USES

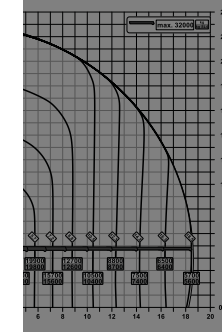
**E**



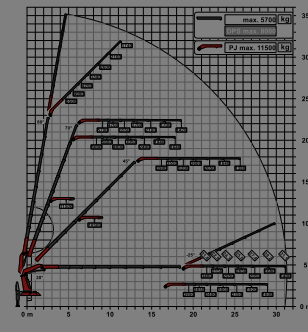
**F**



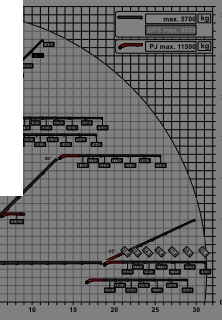
**H**



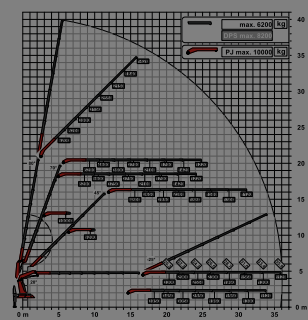
**PJ 240 DPS PLUS**



**DPS-C**



**PJ 300L DPS-C**





# PJ 240 DPS PLUS

## LOADER CRANE PK 165.002 TEC 7

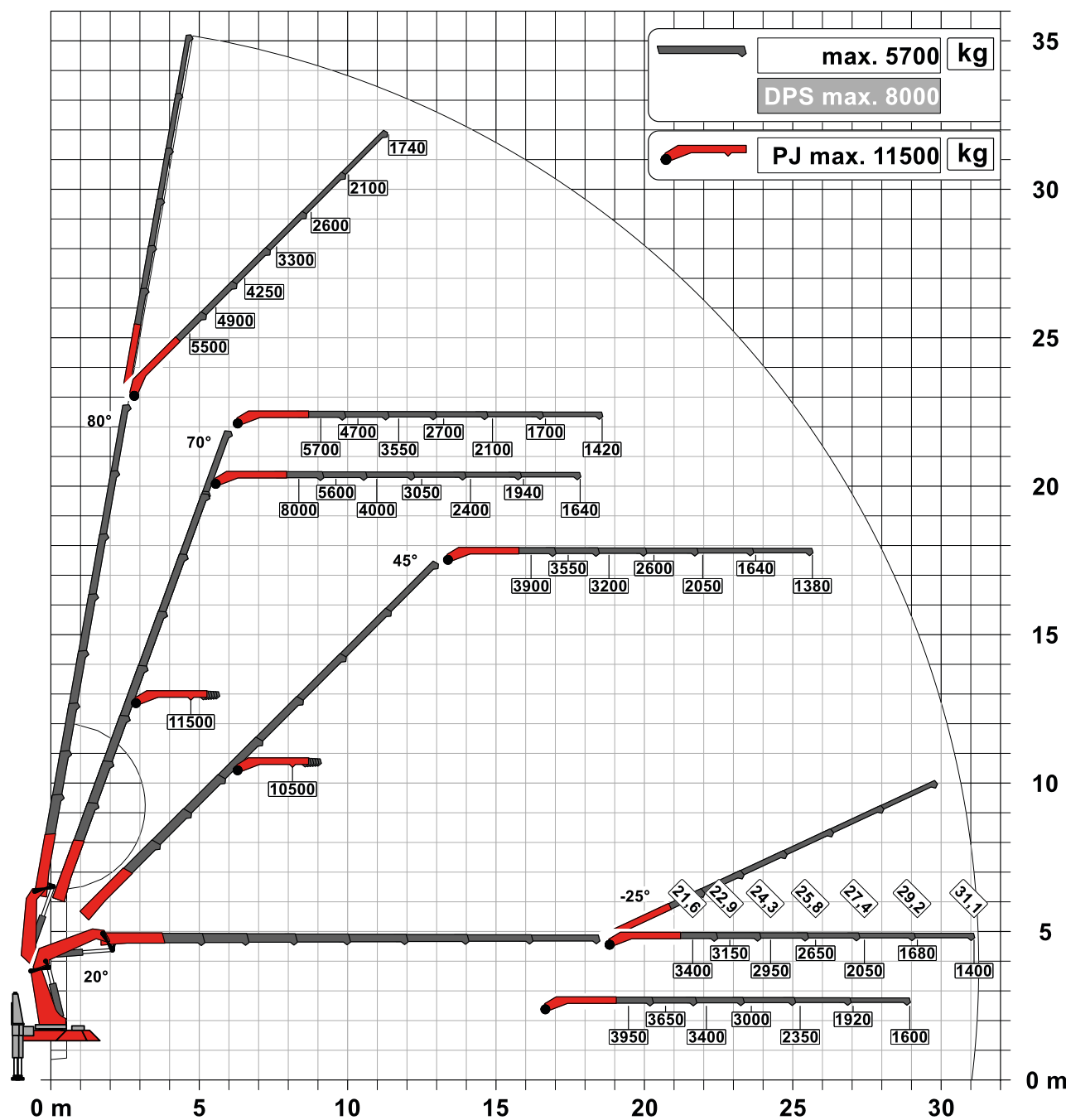
HOME

OVERVIEW

SPECIAL FEATURES

VIDEO

ABOUT US



POSSIBLE USES

E

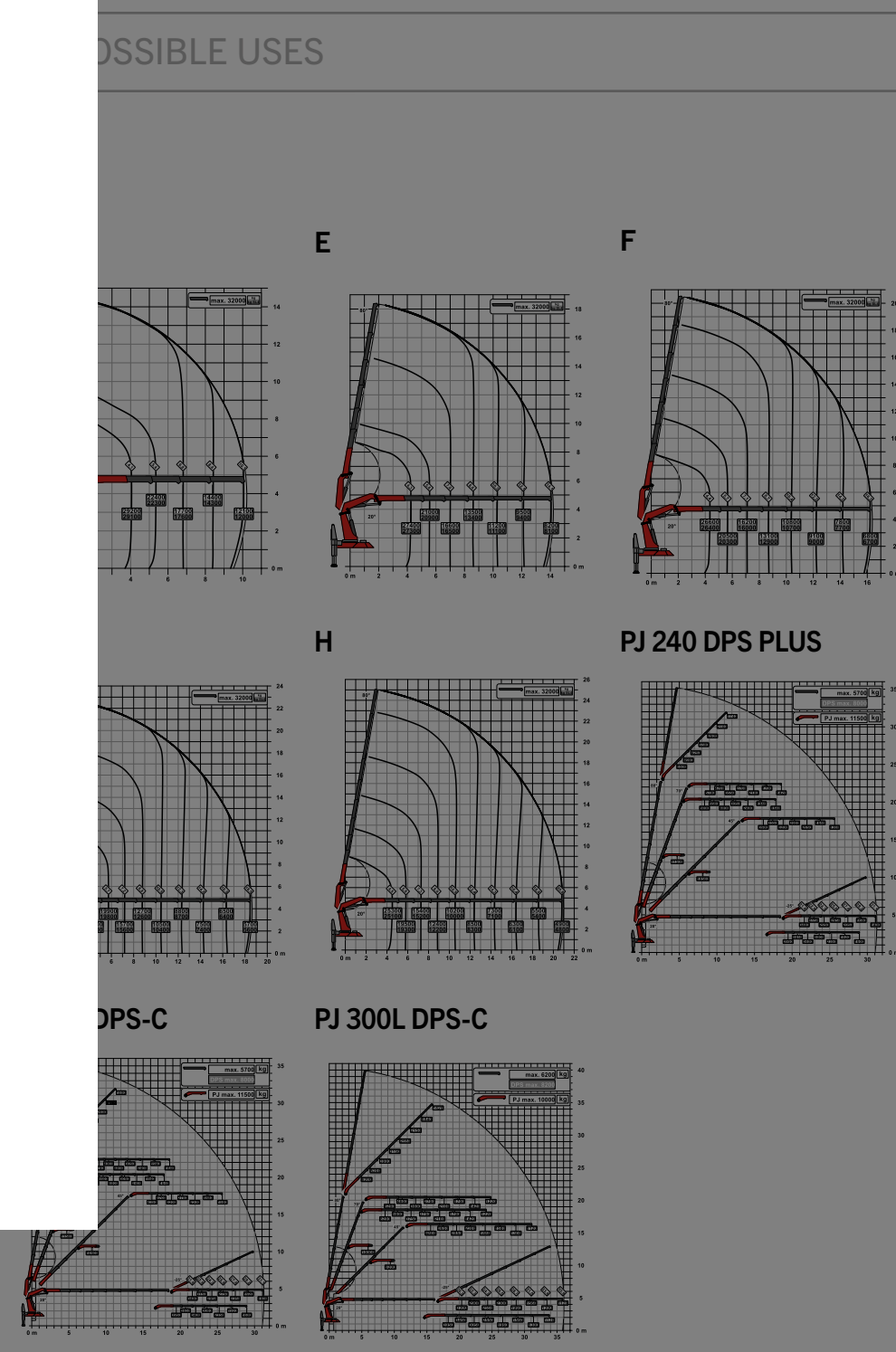
F

H

PJ 240 DPS PLUS

DPS-C

PJ 300L DPS-C



# PJ 240 DPS-C

## LOADER CRANE PK 165.002 TEC 7

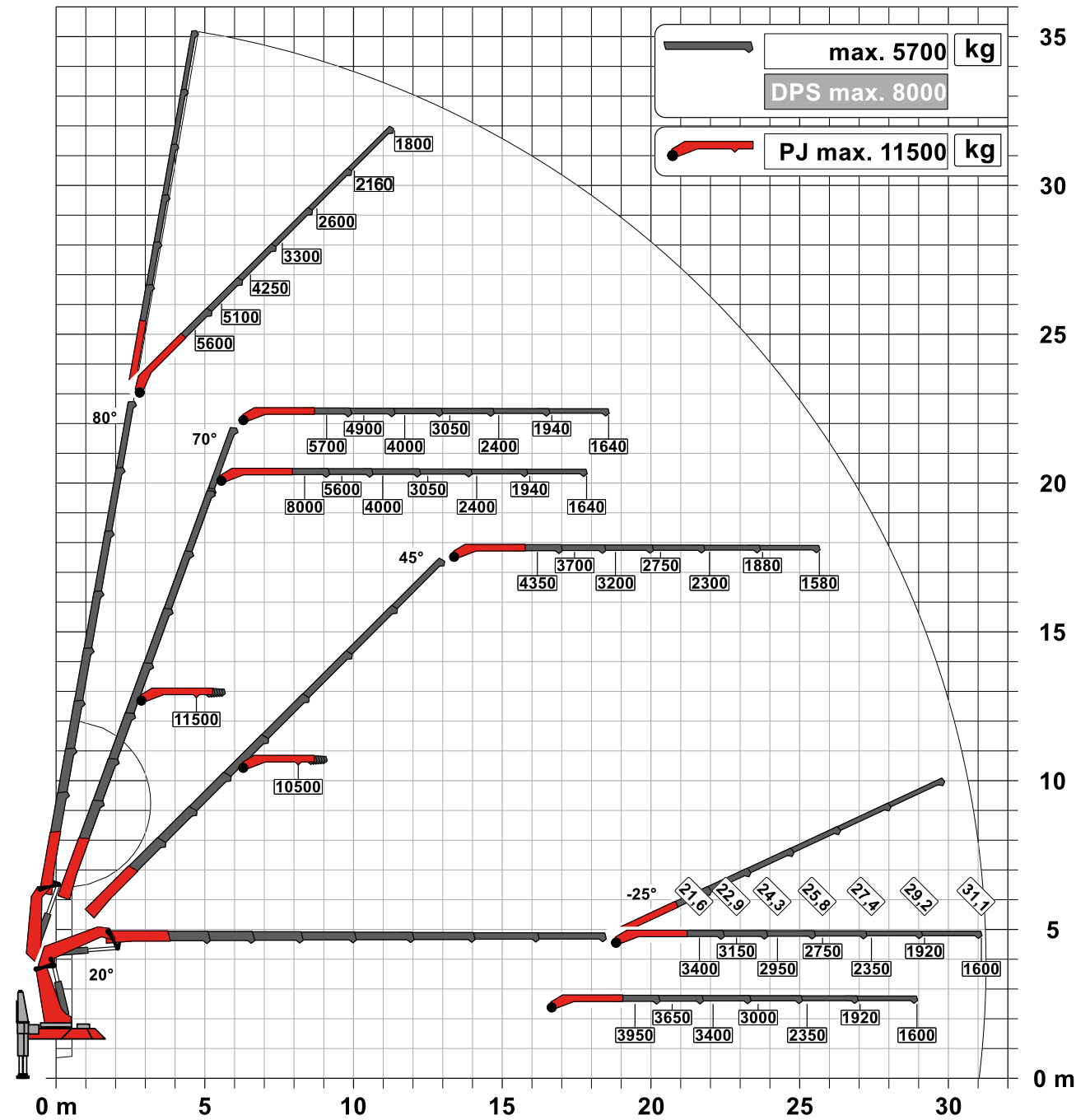
HOME

OVERVIEW

SPECIAL FEATURES

VIDEO

ABOUT US

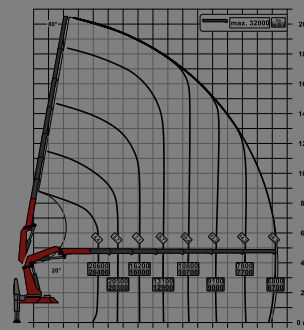


POSSIBLE USES

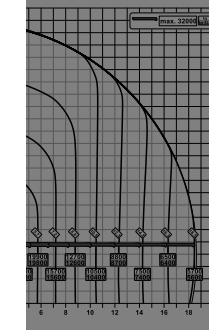
E



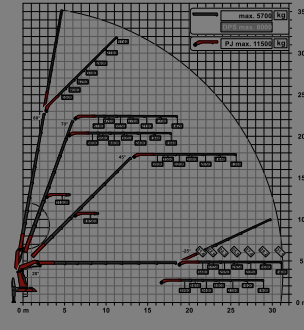
F



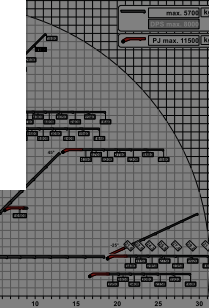
H



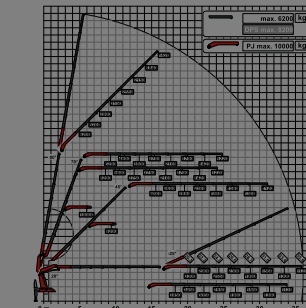
PJ 240 DPS PLUS



DPS-C



PJ 300L DPS-C



# PJ 300L DPS-C

## LOADER CRANE PK 165.002 TEC 7

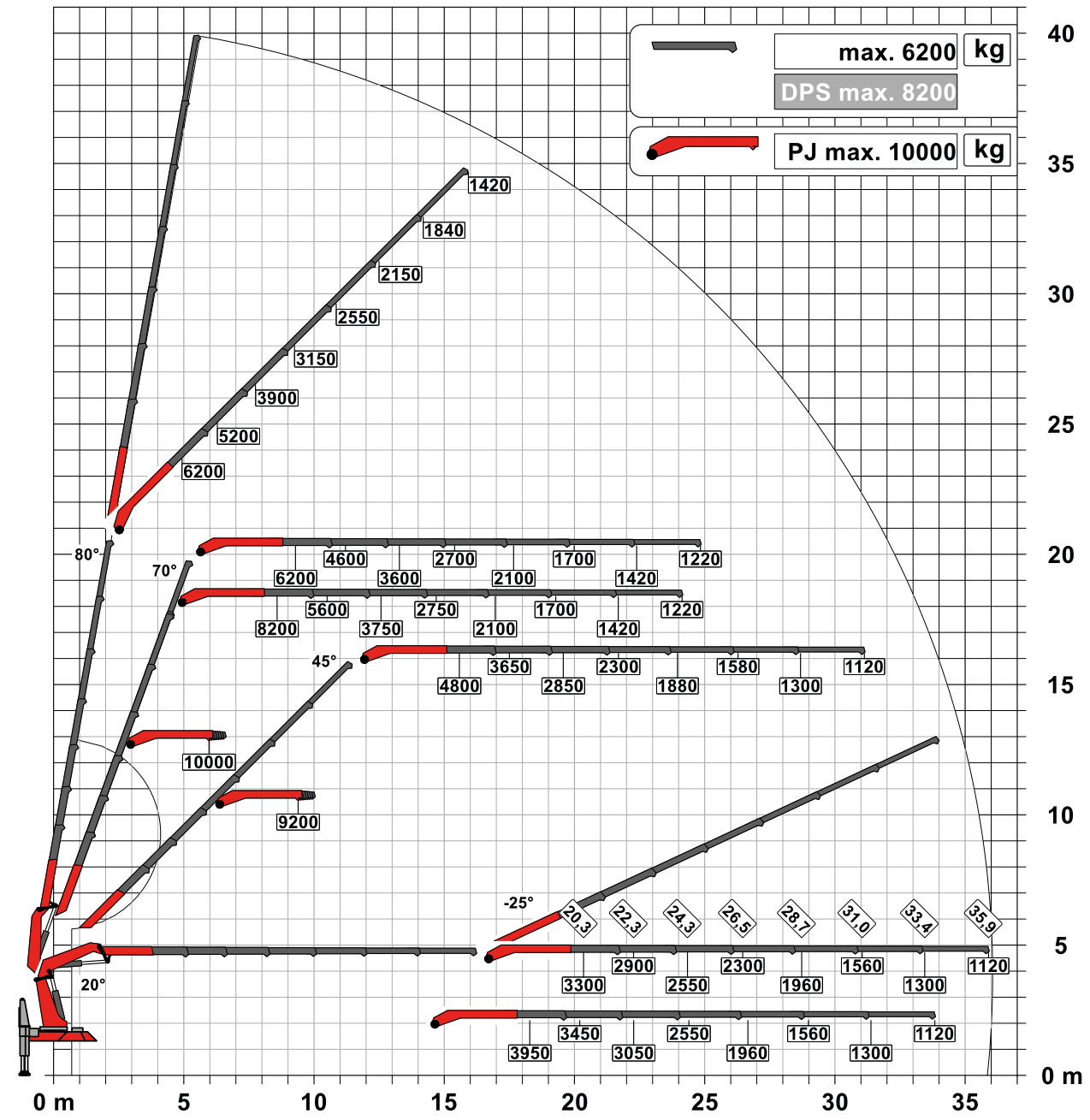
HOME

OVERVIEW

SPECIAL FEATURES

VIDEO

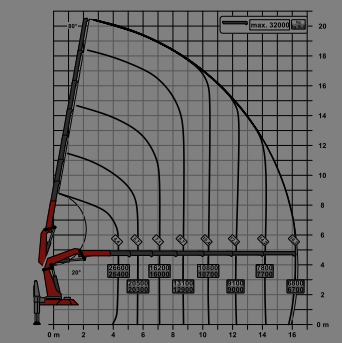
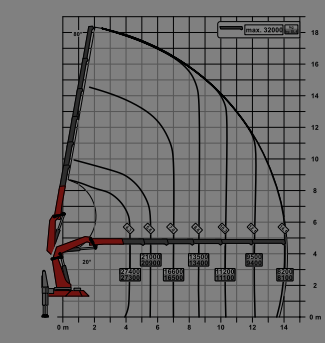
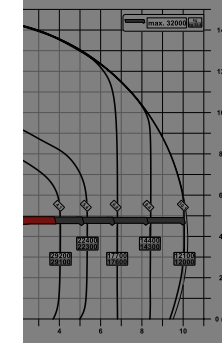
ABOUT US



POSSIBLE USES

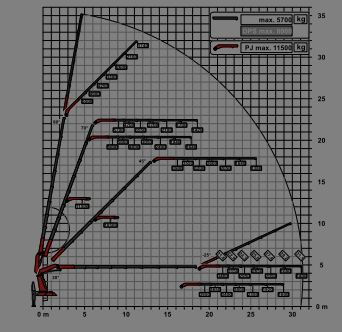
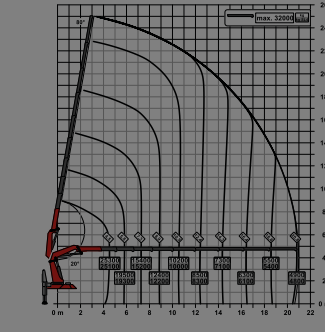
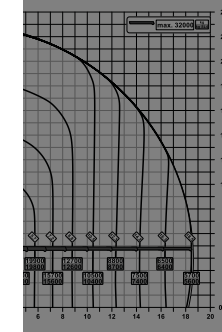
E

F



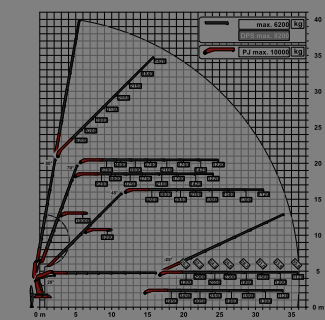
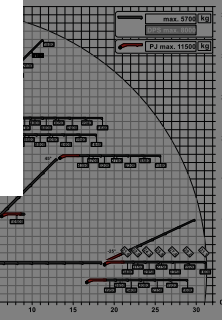
H

PJ 240 DPS PLUS



DPS-C

PJ 300L DPS-C





# LOADER CRANE

## PK 165.002 TEC 7



POSSIBLE USES

OVERVIEW

# LOADER CRANE PK 165.002 TEC 7

OVERVIEW

POSSIBLE USES



# LOADER CRANE PK 165.002 TEC 7

OVERVIEW

POSSIBLE USES





# LOADER CRANE PK 165.002 TEC 7

OVERVIEW



POSSIBLE USES



# LOADER CRANE PK 165.002 TEC 7



POSSIBLE USES

## OVERVIEW





# LOADER CRANE PK 165.002 TEC 7

## SPECIAL FEATURES



- PALCOM**  
RADIO REMOTE CONTROL
- HPSC**  
HIGH PERFORMANCE STABILITY CONTROL
- AOS**  
ACTIVE OSCILLATION SUPPRESSION
- SRC**  
SYNCHRONIZED ROPE CONTROL
- DPS-C**  
DUAL POWER SYSTEM CONTINUOUS
- DPS PLUS**  
DUAL POWER SYSTEM PLUS
- P-FOLD**  
ASSISTANCE SYSTEM

\* Optional features /  
country-specific equipment



# LOADER CRANE PK 165.002 TEC 7

HOME

OVERVIEW

**SPECIAL FEATURES**

VIDEO

ABOUT US

EXTENSION BOOM SYSTEM

CABLE WINCH

FT STOP FUNCTION

OVER LINK PLUS

HPSC

CONTINUOUS SLEWING SYSTEM

## EXTENSION BOOM SYSTEM

### Excellent stability, even at a height

Thanks to the use of high-strength fine-grain structural steels in combination with a new extension boom profile, stiffness is increased and weight reduced.

PALCOM

HPSC

AOS

SRC

DPS-C

DPS PLUS

P-FOLD

\* Wunschausrüstung/  
länderspezifische Ausrüstung

# LOADER CRANE PK 165.002 TEC 7

## DPS PLUS

### More efficient fly jib operation

The Dual Power System allows multiple uses of the crane both for large outreaches as well as for heavy load operation.

HOME

OVERVIEW

**SPECIAL FEATURES**

VIDEO

ABOUT US

EXTENSION BOOM SYSTEM

CABLE WINCH

FT STOP FUNCTION

OVER LINK PLUS

HPSC

CONTINUOUS SLEWING SYSTEM

PALCOM

HPSC

AOS

SRC

DPS-C

DPS PLUS

P-FOLD

\* Wunschausrüstung/  
länderspezifische Ausrüstung



# LOADER CRANE PK 165.002 TEC 7

HOME

OVERVIEW

**SPECIAL FEATURES**

VIDEO

ABOUT US

EXTENSION BOOM SYSTEM

CABLE WINCH

HOIST STOP FUNCTION

OVERLINK PLUS

HPSC

CONTINUOUS SLEWING SYSTEM

## PALCOM P7

### Communication with the operator

The new PALcom P7 features a modern, ergonomic design. The centrally located knob „PALdrive“ and a large colour display enables easy and safe operation.



**PALCOM**

**HPSC**

**AOS**

**SRC**

**DPS-C**

**DPS PLUS**

**P-FOLD**

\* Wunschausrüstung/  
länderspezifische Ausrüstung



# LOADER CRANE PK 165.002 TEC 7

## S-HPLS

### More lifting power when it counts

S-HPLS is one of the most important functions of the PALTRONIC. It is a fully automatic system for increasing lifting power. The lifting power and crane speed can be continuously adapted to suit requirements.

HOME

OVERVIEW

**SPECIAL FEATURES**

VIDEO

ABOUT US

EXTENSION BOOM SYSTEM

CABLE WINCH

FT STOP FUNCTION

OVER LINK PLUS

HPSC

CONTINUOUS SLEWING SYSTEM

PALCOM

HPSC

AOS

SRC

DPS-C

DPS PLUS

P-FOLD

\* Wunschausrüstung/  
länderspezifische Ausrüstung

# LOADER CRANE PK 165.002 TEC 7

HOME

OVERVIEW

**SPECIAL FEATURES**

VIDEO

ABOUT US

## CONTINUOUS SLEWING SYSTEM

**Unrestricted movement**  
More efficient in operation due to faster loading cycles, since the crane can be slewed over a shorter distance. The crane works more efficiently and faster.

EXTENSION BOOM SYSTEM

CABLE WINCH

FT STOP FUNCTION

OVER LINK PLUS

HPSC

CONTINUOUS SLEWING SYSTEM

- PALCOM
- HPSC
- AOS
- SRC
- DPS-C
- DPS PLUS
- P-FOLD

\* Wunschausrüstung/  
länderspezifische Ausrüstung



# LOADER CRANE PK 165.002 TEC 7

HOME

OVERVIEW

**SPECIAL FEATURES**

VIDEO

ABOUT US

EXTENSION BOOM SYSTEM

CABLE WINCH

FT STOP FUNCTION

ER LINK PLUS

HPSC

CONTINUOUS SLEWING SYSTEM

## POWER LINK CABLE WINCH

### More comfort in cable winch operation

Characterised by low installation height, it is ideal for working inside buildings and transports with the crane boom unfolded. The Comfort Cable Routing reduces set-up times to a minimum.

PALCOM

HPSC

AOS

SRC

DPS-C

DPS PLUS

P-FOLD

\* Wunschausrüstung/  
länderspezifische Ausrüstung



# LOADER CRANE PK 165.002 TEC 7

## SOFT STOP FUNCTION

### Improved comfort and safety

The Soft Stop function is an electronic limit position damper. It causes gentle braking of all crane movements before the limit position is reached. Hence, jerky movements and load impacts can be avoided. The crane can be operated more gently and precisely.



HOME

OVERVIEW

**SPECIAL FEATURES**

VIDEO

ABOUT US

EXTENSION BOOM SYSTEM

CABLE WINCH

SOFT STOP FUNCTION

OVER LINK PLUS

HPSC

CONTINUOUS SLEWING SYSTEM

PALCOM

HPSC

AOS

SRC

DPS-C

DPS PLUS

P-FOLD

\* Wunschausrüstung/  
länderspezifische Ausrüstung

# LOADER CRANE PK 165.002 TEC 7

## POWER LINK PLUS

### High variety of uses

With the 15 degree reverse linkage system on the knuckle boom and the 25 degree reverse linkage system fly-jib, you can reach through low door openings and also work inside buildings. Heavy crane work – even in difficult conditions.

HOME

OVERVIEW

**SPECIAL FEATURES**

VIDEO

ABOUT US

EXTENSION BOOM SYSTEM

CABLE WINCH

DPS-PLUS

FT STOP FUNCTION

POWER LINK PLUS

HPSC

CONTINUOUS SLEWING SYSTEM

PALCOM

HPSC

AOS

SRC

DPS-C

DPS PLUS

P-FOLD

\* Wunschausrüstung/  
länderspezifische Ausrüstung

# LOADER CRANE PK 165.002 TEC 7

HOME

OVERVIEW

**SPECIAL FEATURES**

VIDEO

ABOUT US

EXTENSION BOOM SYSTEM

CABLE WINCH

DPS-PLUS

FT STOP FUNCTION

OVER LINK PLUS

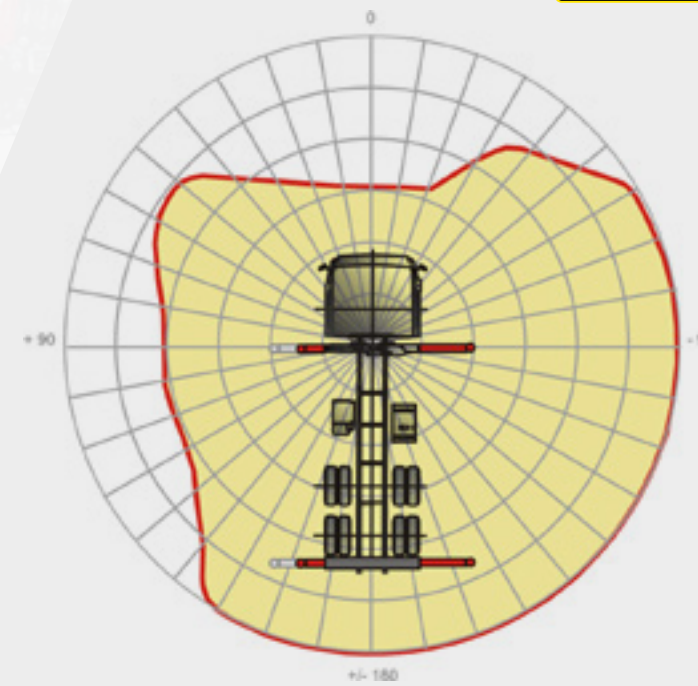
HPSC

CONTINUOUS SLEWING SYSTEM

## HPSC

### Maximum utilisation of the working range

The variable stabiliser positioning of the High Performance Stability Control System allows the full lifting capacity of the crane to be used, even when working within tight spaces.



PALCOM

HPSC

AOS

SRC

DPS-C

DPS PLUS

P-FOLD

\* Wunschausrüstung/  
länderspezifische Ausrüstung



# LOADER CRANE

## PK 165.002 TEC 7

ABOUT US

# LIFETIME EXCELLENCE

Palfinger loader cranes are convincing due to their superior life-cycle performance. They are the most economical and also the most reliable over the entire product life. From solution finding to resale.

- **Better solutions**
- **Better efficiency**
- **Better ergonomics**
- **Higher availability**
- **More reliability**
- **Better ecology**
- **Higher serviceability**
- **Higher value retention**

