

**Technical Specification
Hydraulic crane
PK 135.002 TEC 7
(S531-SK-A)**

Edition 12/2017

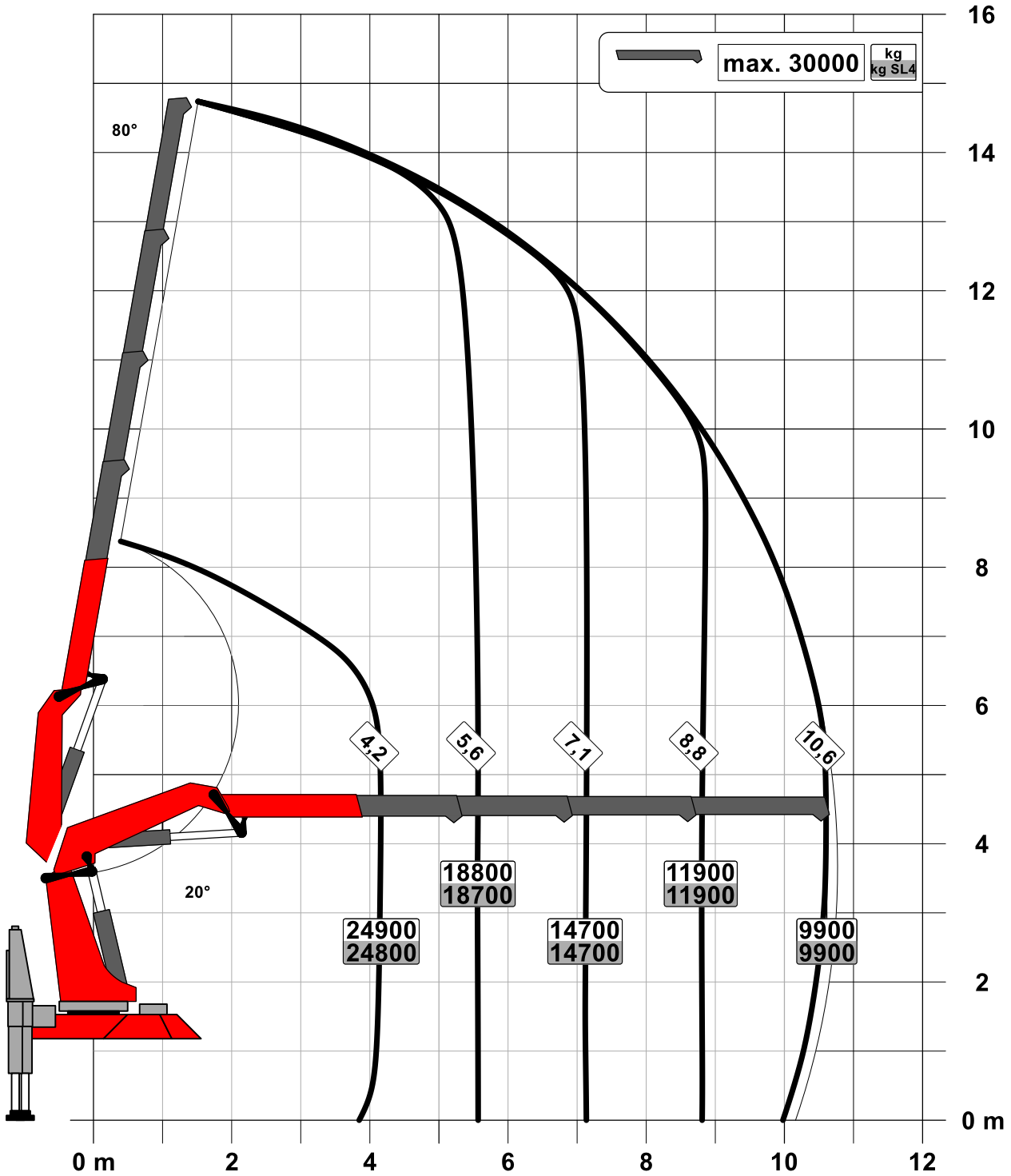
EN

PALFINGER AG
Lamprechtshausener Bundesstraße 8
5101 Bergheim / Austria
www.palfinger.com

Page	
020	LIFTING CAPACITY DIAGRAM
020.01100	Lifting capacity diagram PK 135.002 TEC C
020.02100	Lifting capacity diagram PK 135.002 TEC E
020.03100	Lifting capacity diagram PK 135.002 TEC F
020.04100	Lifting capacity diagram PK 135.002 TEC G
020.05100	Lifting capacity diagram PK 135.002 TEC H
020.06100	Lifting capacity diagram PK 135.002 TEC F PJ240 EJV2 DPS-C
020.07100	Lifting capacity diagram PK 135.002 TEC G PJ190 EJV2 DPS-C
020.08100	Lifting capacity diagram PK 135.002 TEC H PJ150 EJV1 DPS-C
020.09100	Lifting capacity diagram PK 135.002 TEC F PJ240 EJV2 DPS+
020.10100	Lifting capacity diagram PK 135.002 TEC G PJ190 EJV2 DPS+
020.11100	Lifting capacity diagram PK 135.002 TEC H PJ150 EJV1 DPS+
020.21000	Load capacity-Rope winch 3.5t

Subject to change, production tolerances have to be taken into account.

Symbolic crane figure

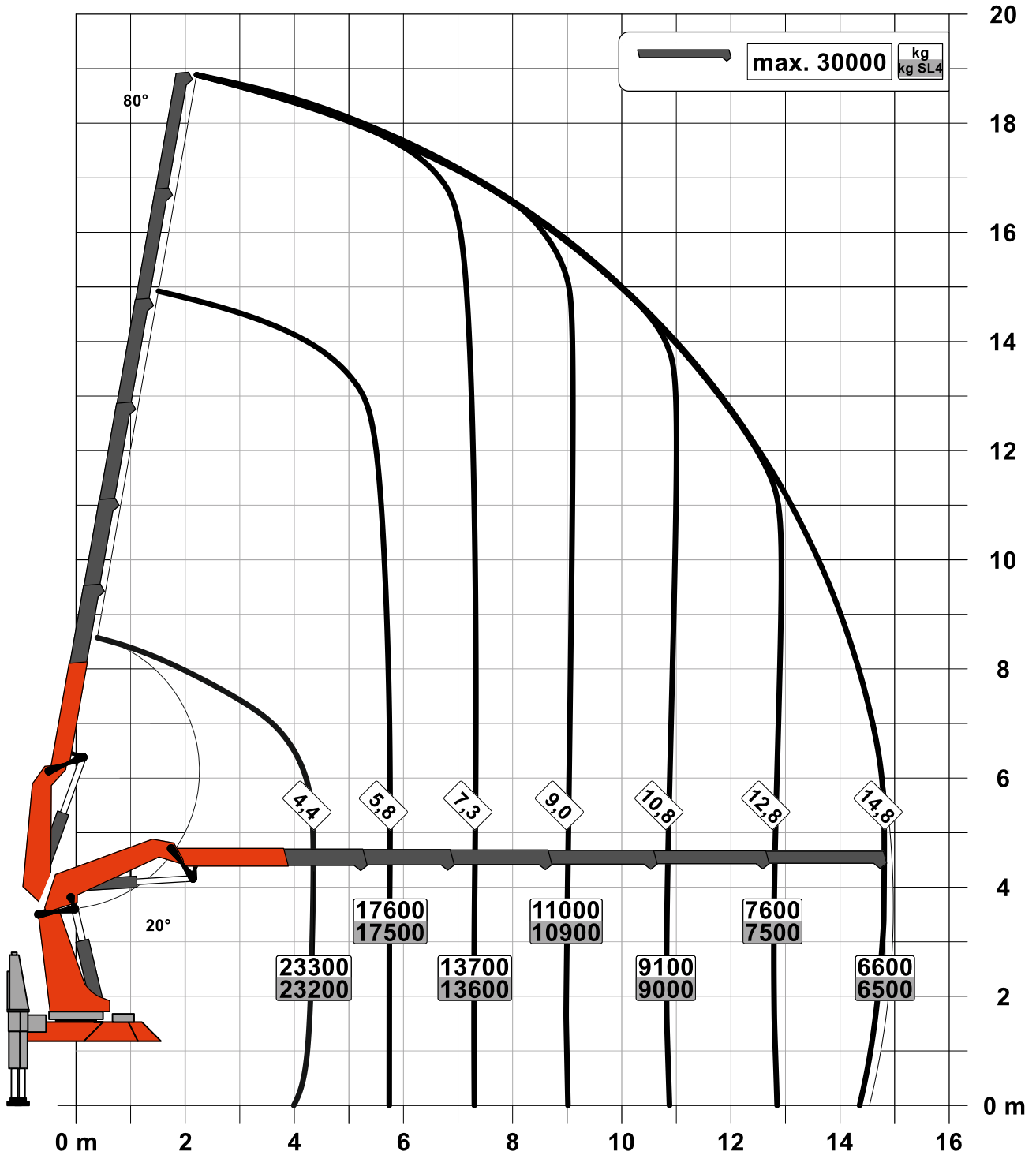


For Rope winch load capacity refer to page
Page 020.21000 3.5t

Lifting capacity diagram PK 135.002 TEC E

Subject to change, production tolerances have to be taken into account.

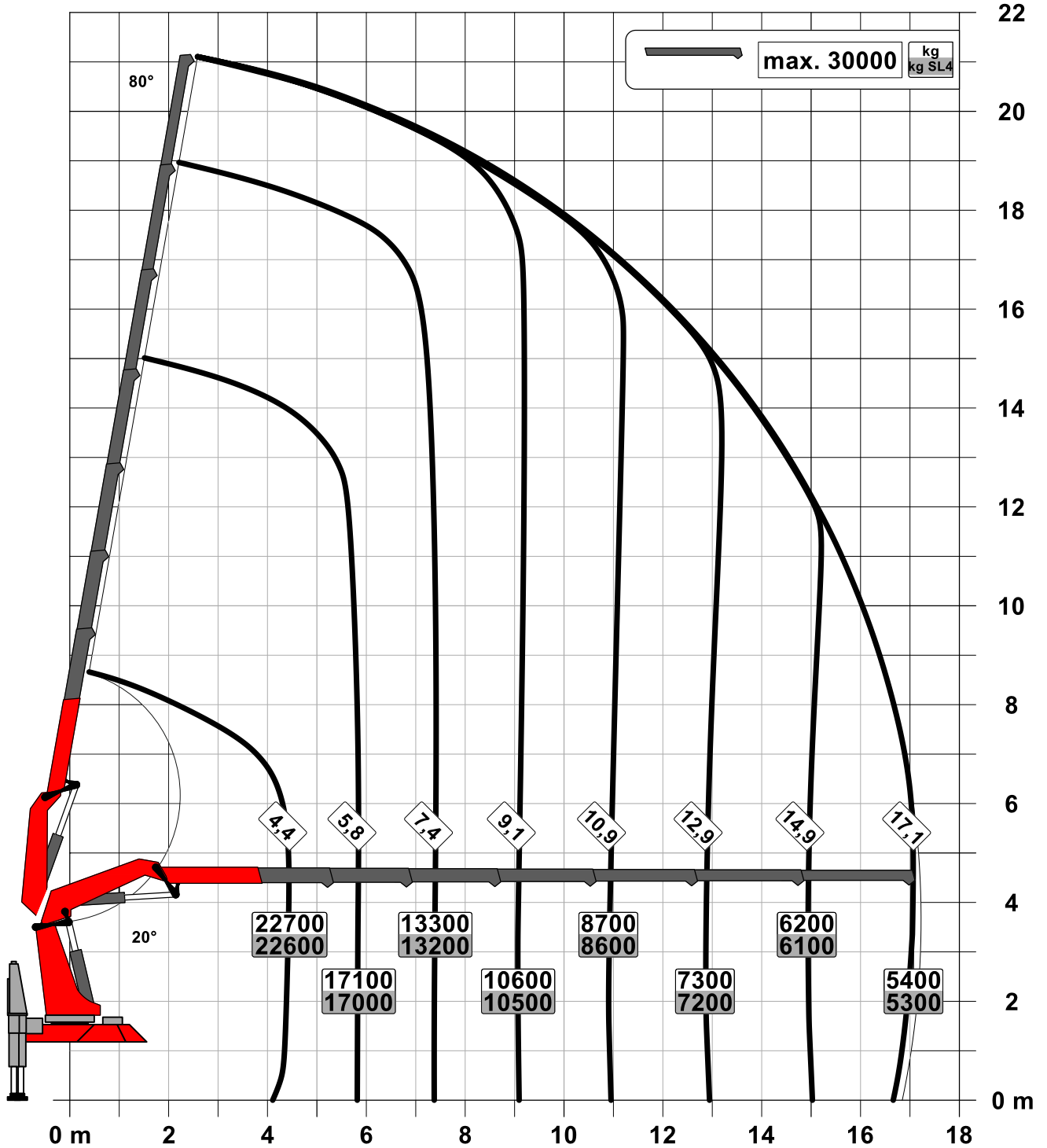
Symbolic crane figure



For Rope winch load capacity refer to page
Page 020.21000 3.5t

Subject to change, production tolerances have to be taken into account.

Symbolic crane figure

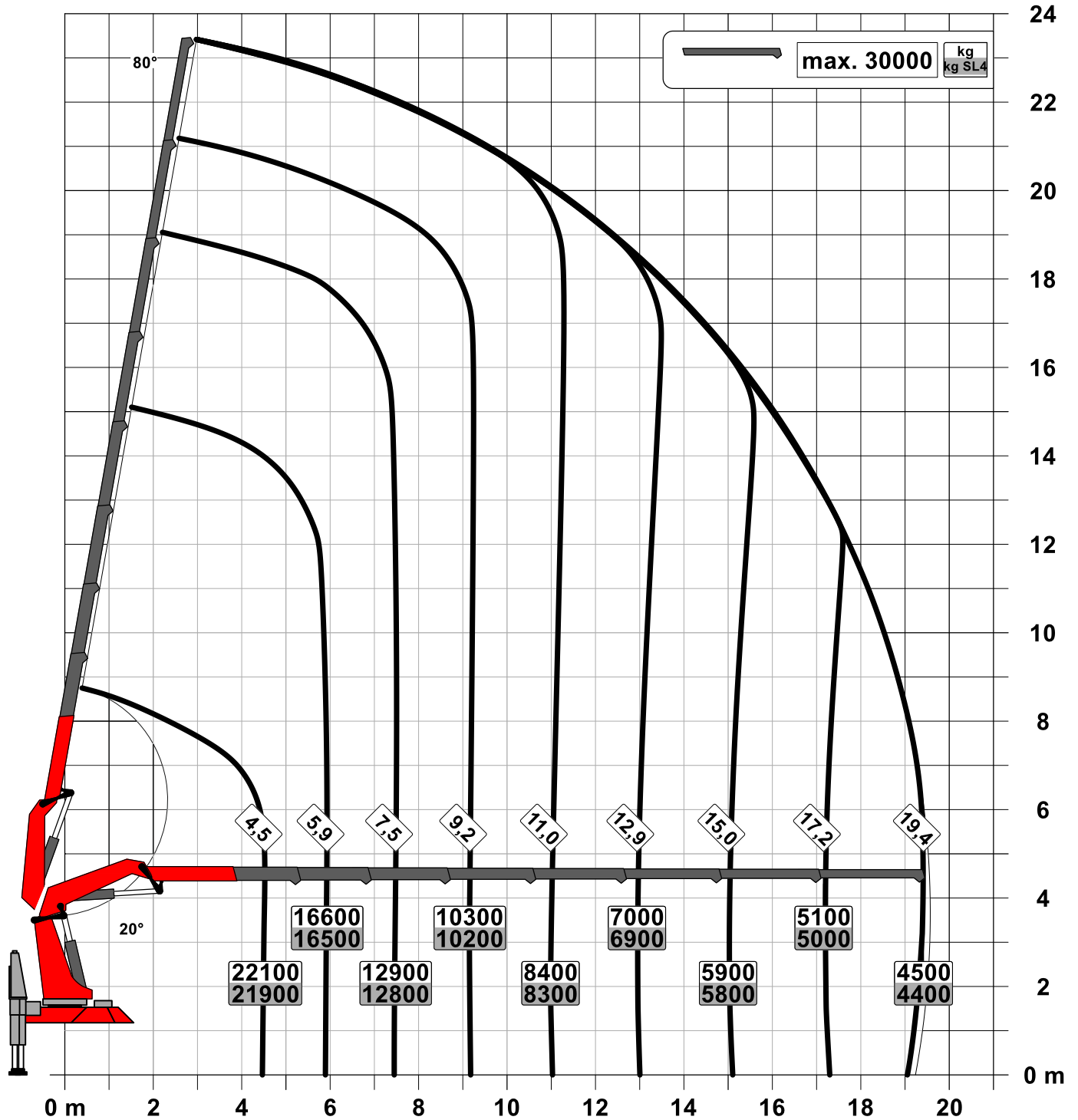


For Rope winch load capacity refer to page
Page 020.21000 3.5t

Lifting capacity diagram PK 135.002 TEC G

Subject to change, production tolerances have to be taken into account.

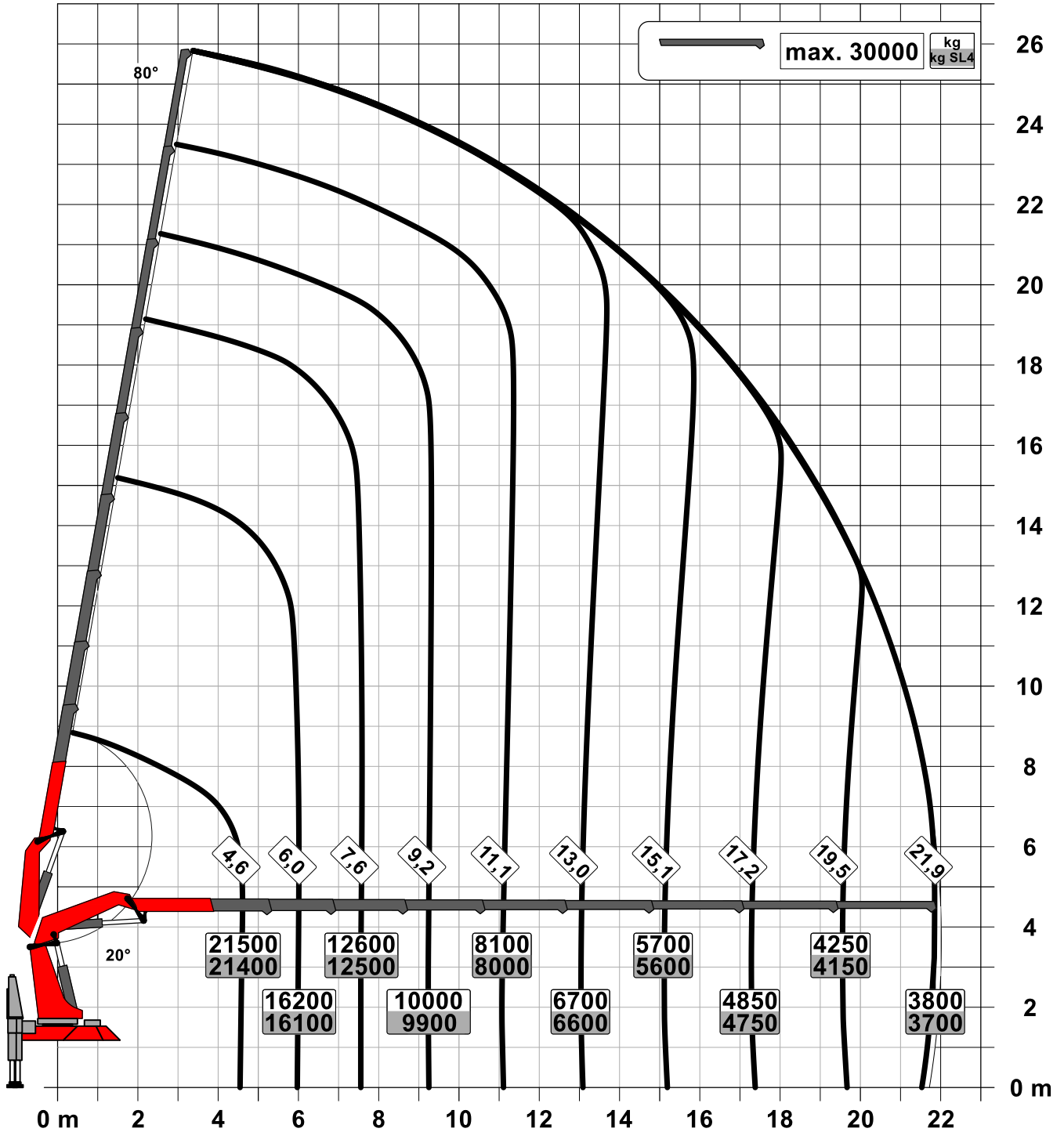
Symbolic crane figure



For Rope winch load capacity refer to page
Page 020.21000 3.5t

Subject to change, production tolerances have to be taken into account.

Symbolic crane figure



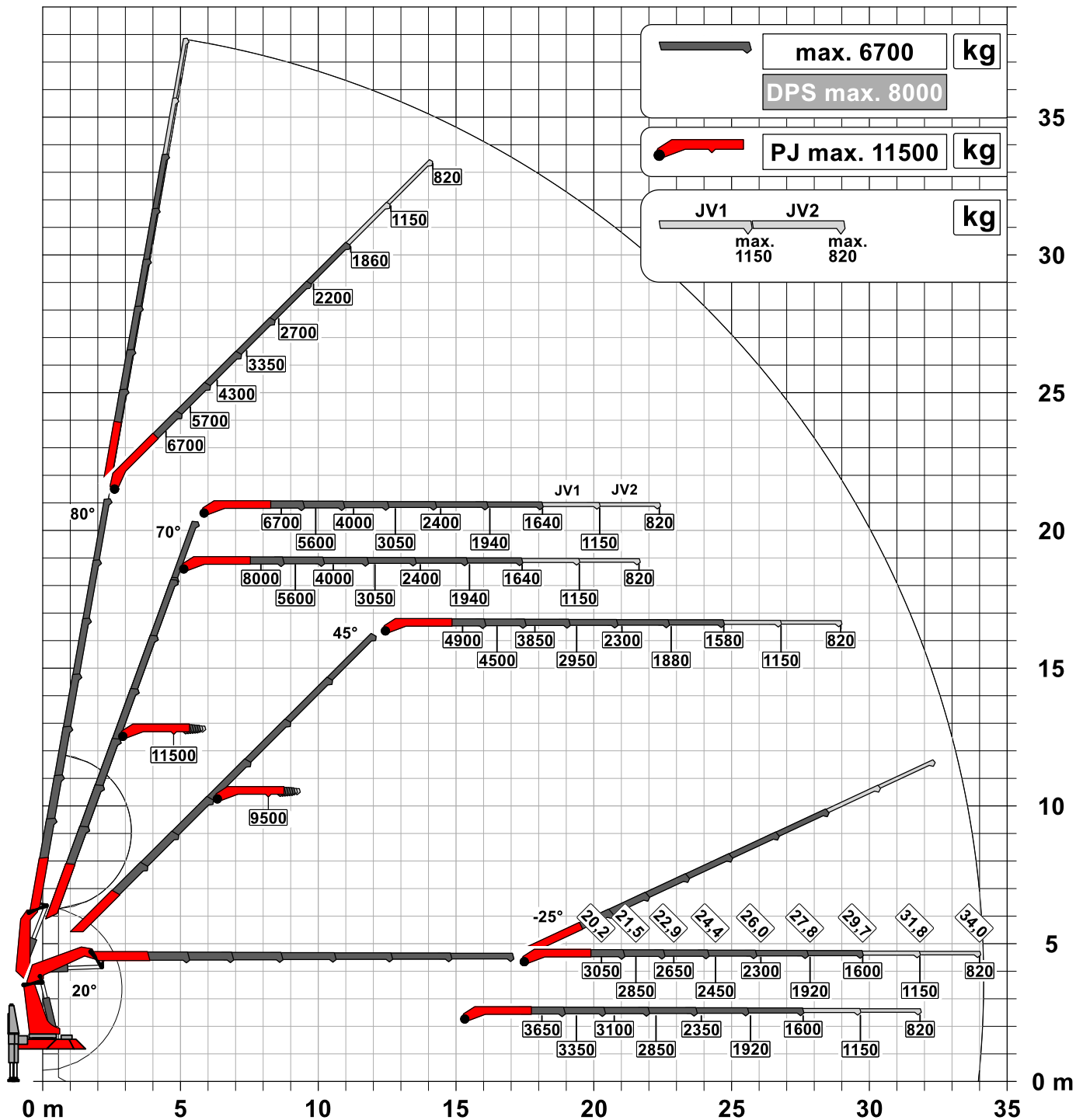
For Rope winch load capacity refer to page
Page 020.21000 3.5t

Subject to change, production tolerances have to be taken into account.

Symbolic crane figure

DPS-C

Dual Power System



Dead weight: JV1 JV2
 45 kg 45 kg

When using mechanical boom extensions, the loads shown on the charts need to be reduced by the weight of these extensions. The load capacities as per chart are not reached when using hose equipment on the Fly-Jib.

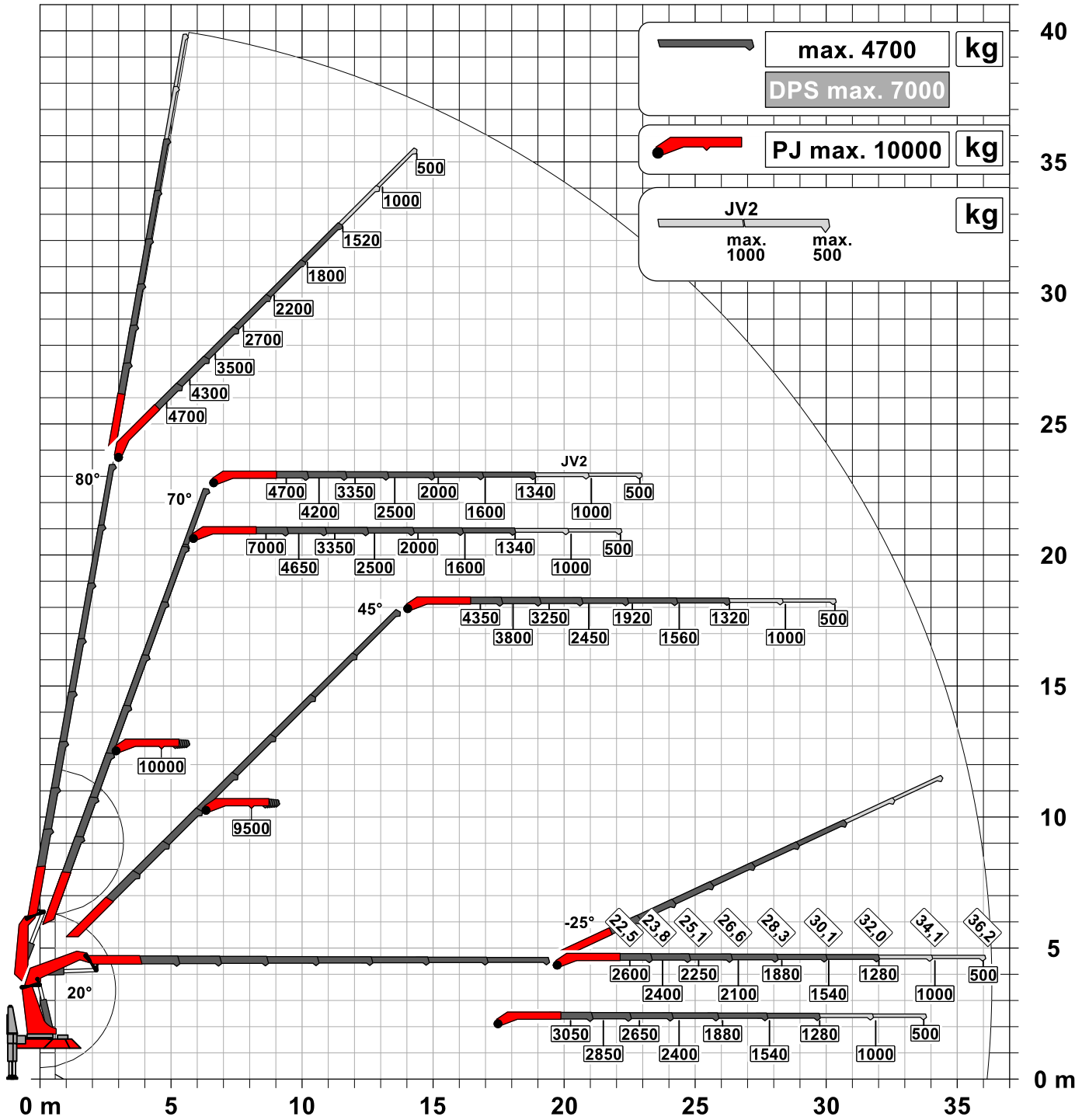


For Rope winch load capacity refer to page
Page 020.21000 3.5t

Subject to change, production tolerances have to be taken into account.


Symbolic crane figure

DPS-C
Dual Power System



Dead weight: JV2
75 kg

When using mechanical boom extensions, the loads shown on the charts need to be reduced by the weight of these extensions. The load capacities as per chart are not reached when using hose equipment on the Fly-Jib.

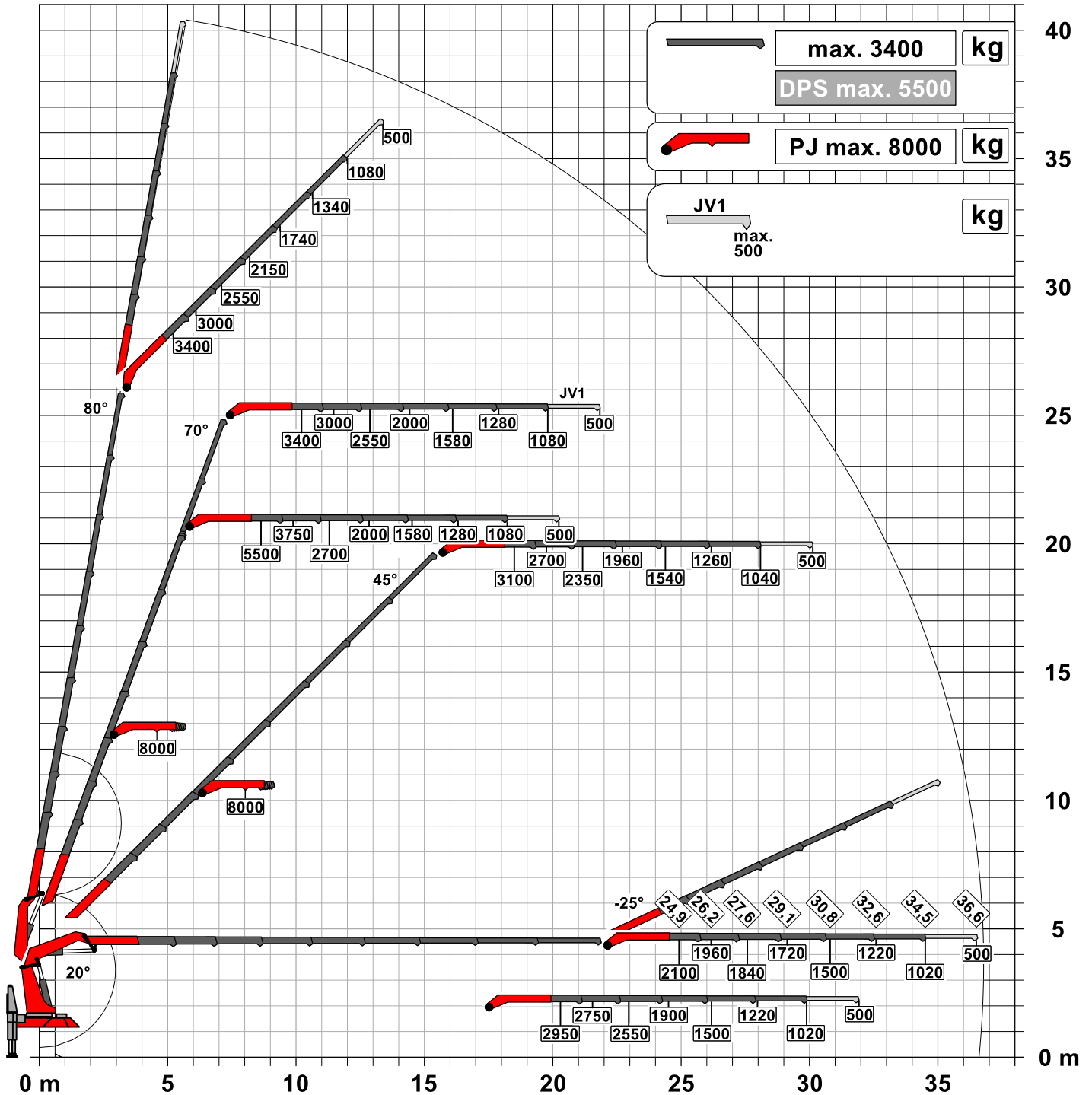
 For Rope winch load capacity refer to page
Page 020.21000 3.5t

Subject to change, production tolerances have to be taken into account.

Symbolic crane figure

DPS-C

Dual Power System



Dead weight: JV1
40 kg

When using mechanical boom extensions, the loads shown on the charts need to be reduced by the weight of these extensions. The load capacities as per chart are not reached when using hose equipment on the Fly-Jib.

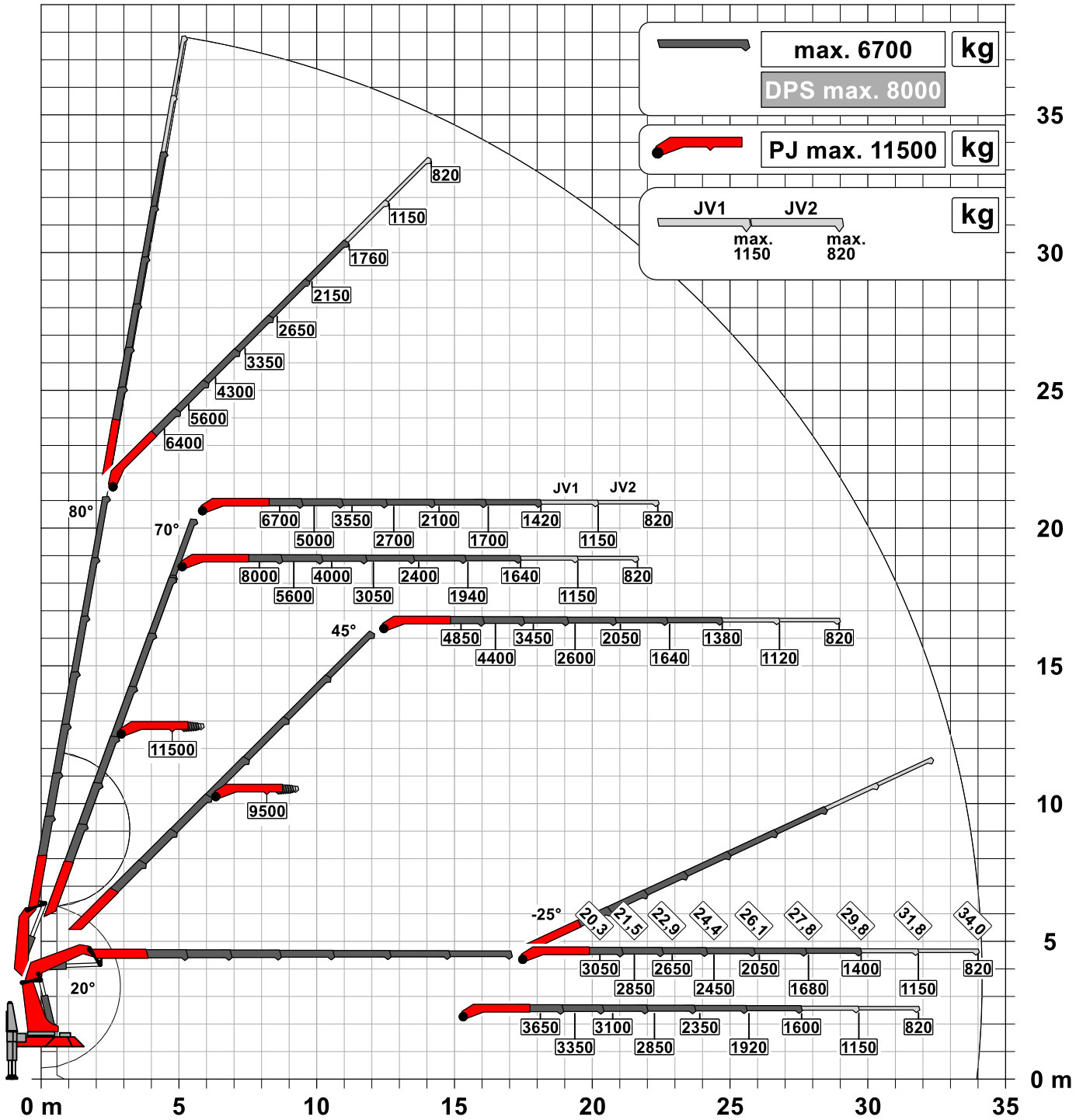


For Rope winch load capacity refer to page
Page 020.21000 3.5t

Subject to change, production tolerances have to be taken into account.

Symbolic crane figure

DPS plus
Dual Power System



Dead weight: JV1 45 kg, JV2 45 kg

When using mechanical boom extensions, the loads shown on the charts need to be reduced by the weight of these extensions. The load capacities as per chart are not reached when using hose equipment on the Fly-Jib.

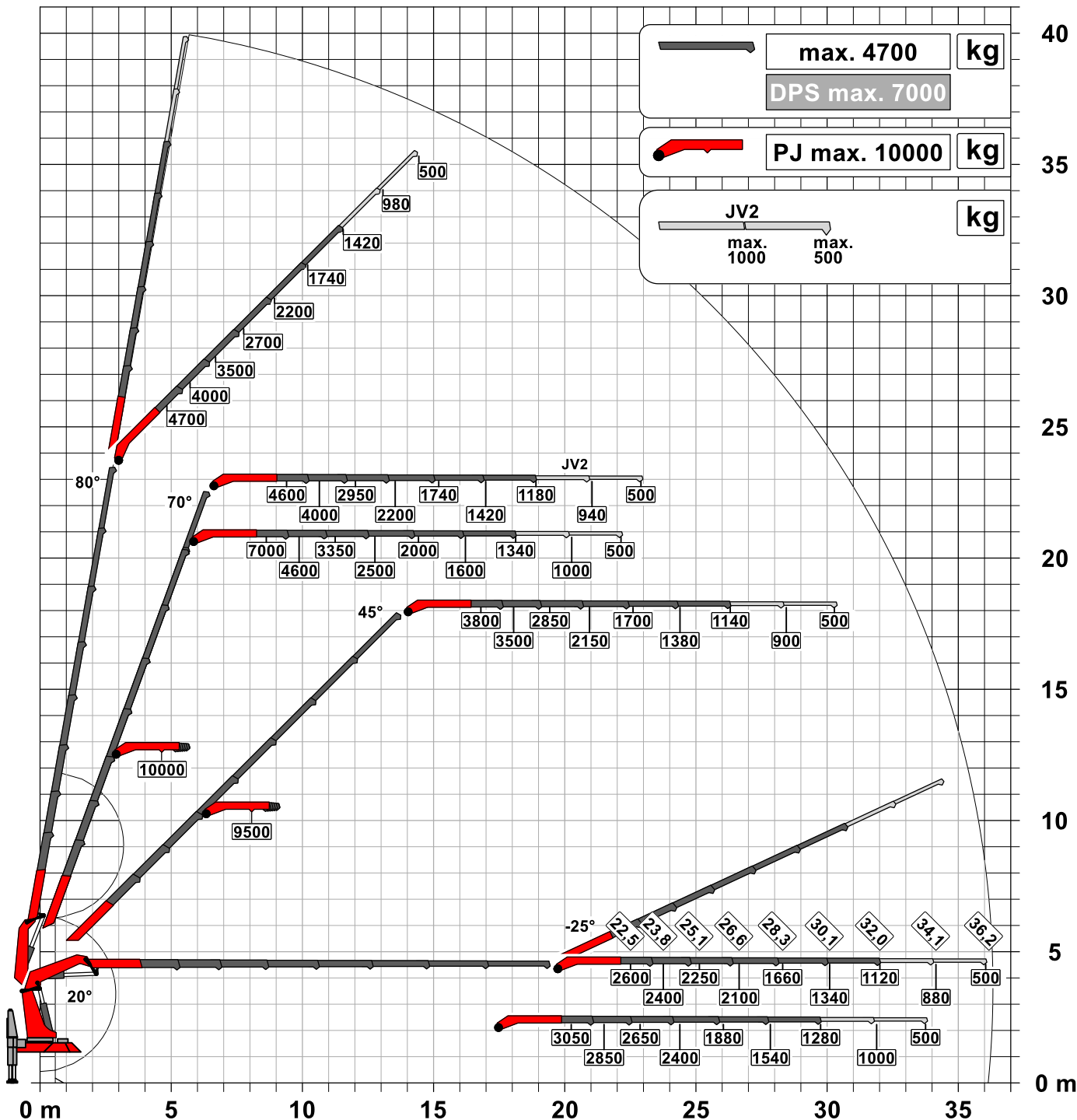
For Rope winch load capacity refer to page Page 020.21000 3.5t

Lifting capacity diagram PK 135.002 TEC G PJ190 EJV2 DPS+

Subject to change, production tolerances have to be taken into account.

Symbolic crane figure

DPS plus
Dual Power System



Dead weight: JV2
75 kg

When using mechanical boom extensions, the loads shown on the charts need to be reduced by the weight of these extensions. The load capacities as per chart are not reached when using hose equipment on the Fly-Jib.

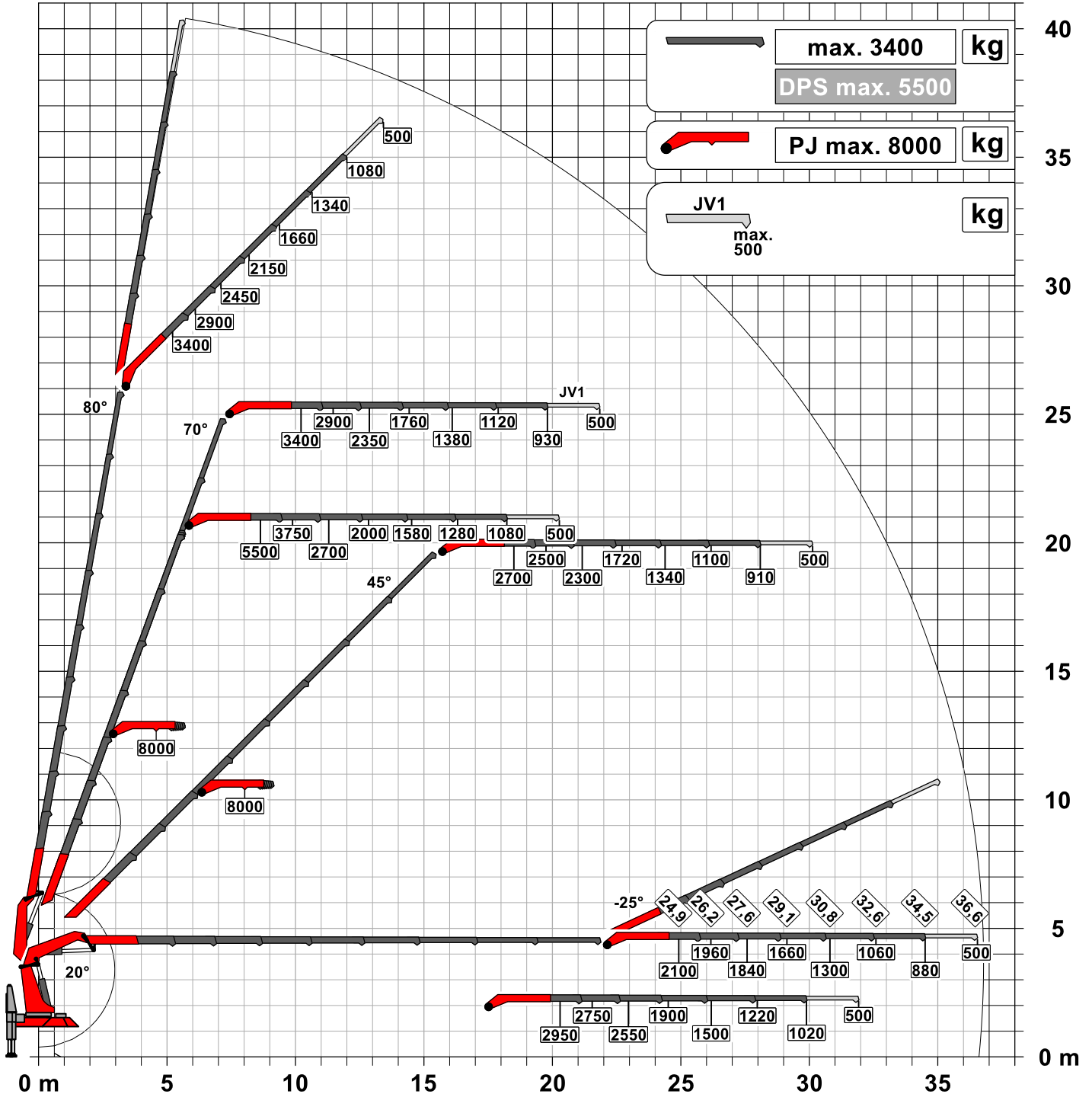


For Rope winch load capacity refer to page
Page 020.21000 3.5t

Subject to change, production tolerances have to be taken into account.

Symbolic crane figure

DPS plus
Dual Power System



Dead weight: JV1
40 kg

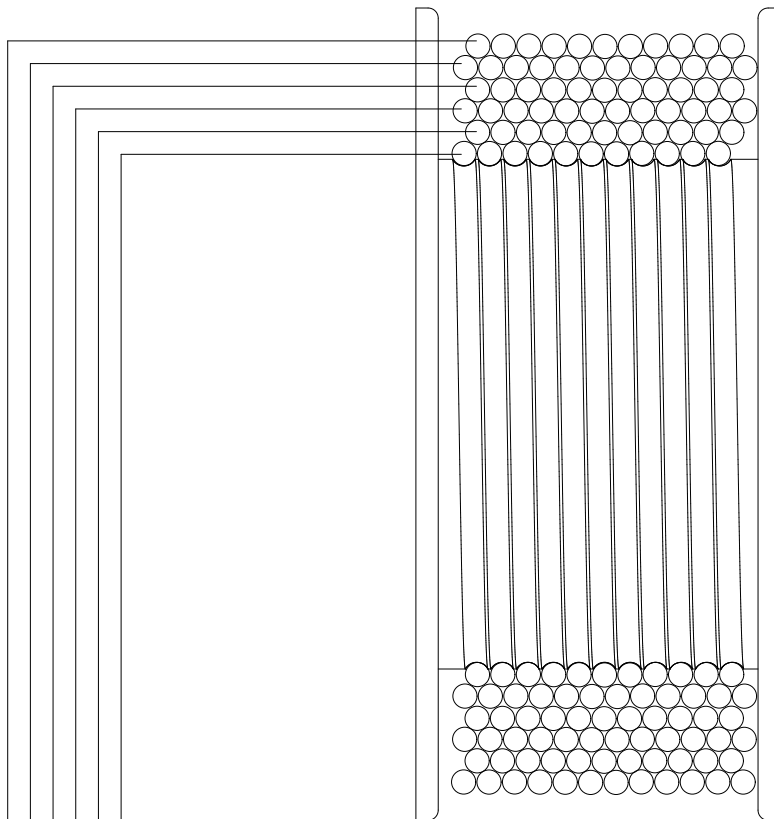
When using mechanical boom extensions, the loads shown on the charts need to be reduced by the weight of these extensions. The load capacities as per chart are not reached when using hose equipment on the Fly-Jib.




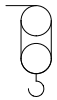
For Rope winch load capacity refer to page
Page 020.21000 3.5t

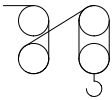
Load capacity-Rope winch 3.5t

Subject to change, production tolerances have to be taken into account.



Strands	
1STRAN	
	
Load capacity	Wire reception
1 3500 kg [7,720 lb]	13,1 m [43'0"]
2 3260 kg [7,190 lb]	26,2 m [85'11"]
3 3050 kg [6,720 lb]	41,2 m [135'2"]
4 2870 kg [6,330 lb]	56,1 m [184'1"]
5 2705 kg [5,960 lb]	73,1 m [239'10"]
6 2560 kg [5,640 lb]	89,8 m [294'7"]

Strands	
2STRAN	
	
Load capacity	Wire reception
7000 kg [15,430 lb]	13,1 m [43'0"]
6520 kg [14,370 lb]	26,2 m [85'11"]
6100 kg [13,450 lb]	41,2 m [135'2"]
5740 kg [12,650 lb]	56,1 m [184'1"]
5410 kg [11,930 lb]	73,1 m [239'10"]
5120 kg [11,290 lb]	89,8 m [294'7"]

Strands	
4STRAN	
	
Load capacity	Wire reception
14000 kg [30,860 lb]	13,1 m [43'0"]
13040 kg [28,750 lb]	26,2 m [85'11"]
12200 kg [26,900 lb]	41,2 m [135'2"]
11480 kg [25,310 lb]	56,1 m [184'1"]
10820 kg [23,850 lb]	73,1 m [239'10"]
10240 kg [22,570 lb]	89,8 m [294'7"]

Weights of load handling devices are part of the load lifted and must be deducted from the capacity.
Weight of the load handling equipment must be deducted from the lifting capacity.

