

Technical Specification
Hydraulic crane
PK110002 SH
(S512-SK-D)

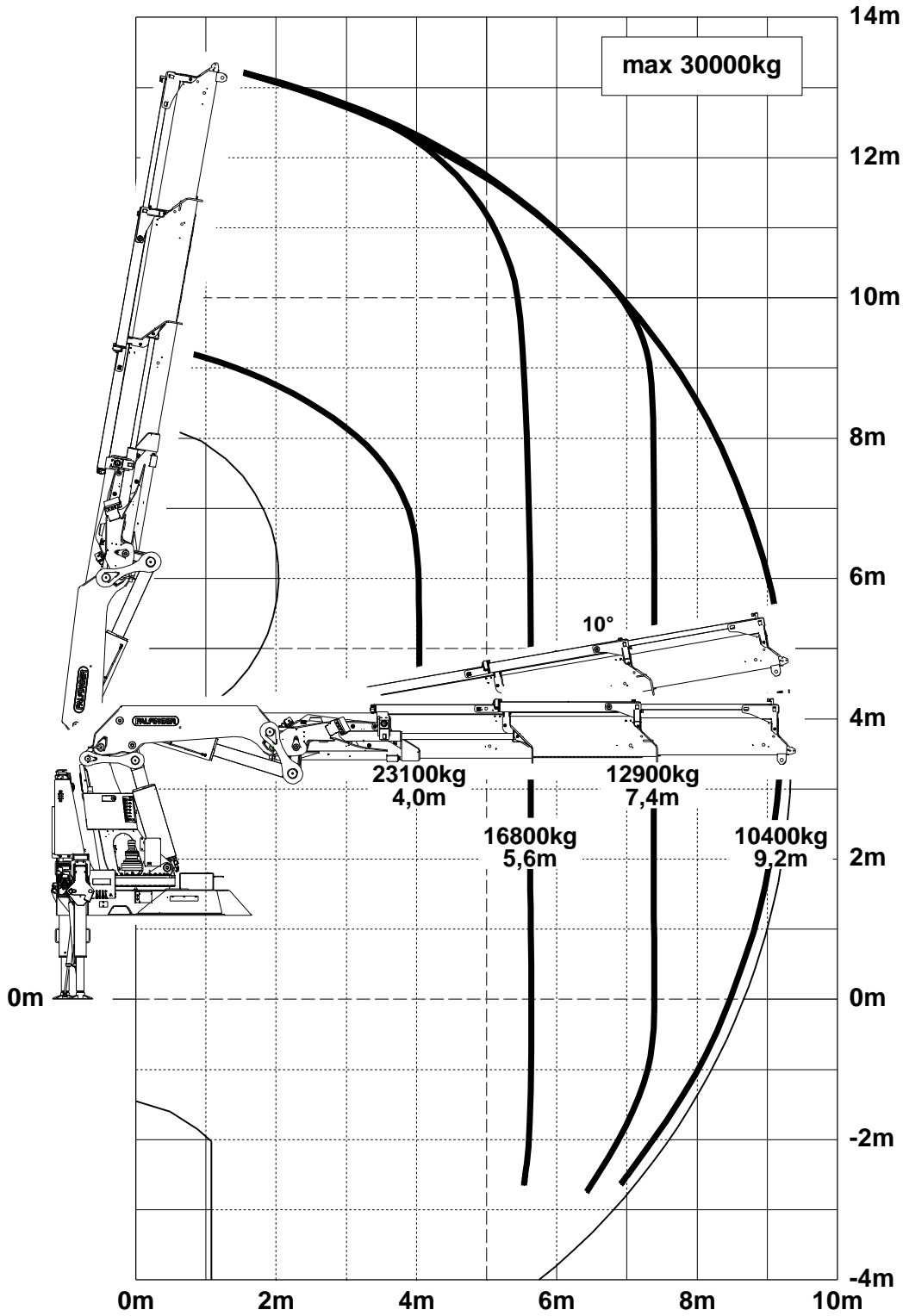
Edition 08/2012

EN

PALFINGER AG
Lamprechtshausener Bundesstraße 8
5101 Bergheim / Austria
www.palfinger.com

Page	
020	LIFTING CAPACITY DIAGRAM
020.01100	Lifting capacity diagram PK 110002-SH B
020.02100	Lifting capacity diagram PK 110002-SH C
020.03100	Lifting capacity diagram PK 110002-SH D
020.04100	Lifting capacity diagram PK 110002-SH E
020.05100	Lifting capacity diagram PK 110002-SH F
020.06100	Lifting capacity diagram PK 110002-SH G
020.07100	Lifting capacity diagram PK 110002-SH H
020.08100	Lifting capacity diagram PK 110002-SH F PJ170 C
020.09100	Lifting capacity diagram PK 110002-SH F PJ170 EJV1
020.10100	Lifting capacity diagram PK 110002-SH G PJ170 C
020.11100	Lifting capacity diagram PK 110002-SH G PJ170 C DPS+
020.12100	Lifting capacity diagram PK 110002-SH G PJ170 EJV1
020.13100	Lifting capacity diagram PK 110002-SH G PJ170 EJV1 DPS+
020.14100	Lifting capacity diagram PK 110002-SH G PJ125 C
020.15100	Lifting capacity diagram PK 110002-SH G PJ125 EJV1
020.20100	Load capacity-Rope winch KBW007-AA 3.5t

Subject to change, production tolerances have to be taken into account.



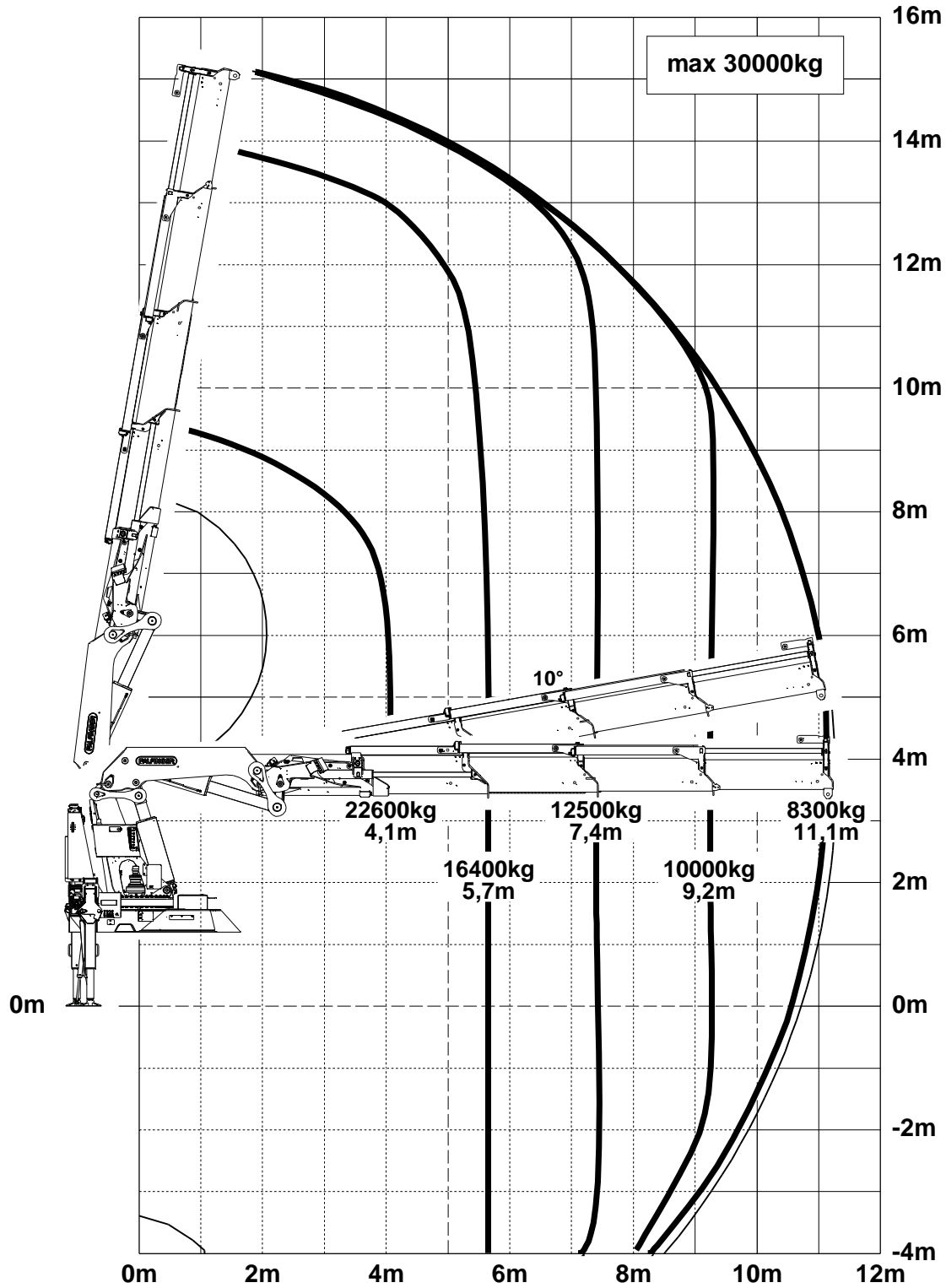
Symbolic crane figure, indications at 20° main boom position & load arm in horizontal position



For Rope winch load capacity refer to page
Page 020.20100

Lifting capacity diagram PK 110002-SH C

Subject to change, production tolerances have to be taken into account.

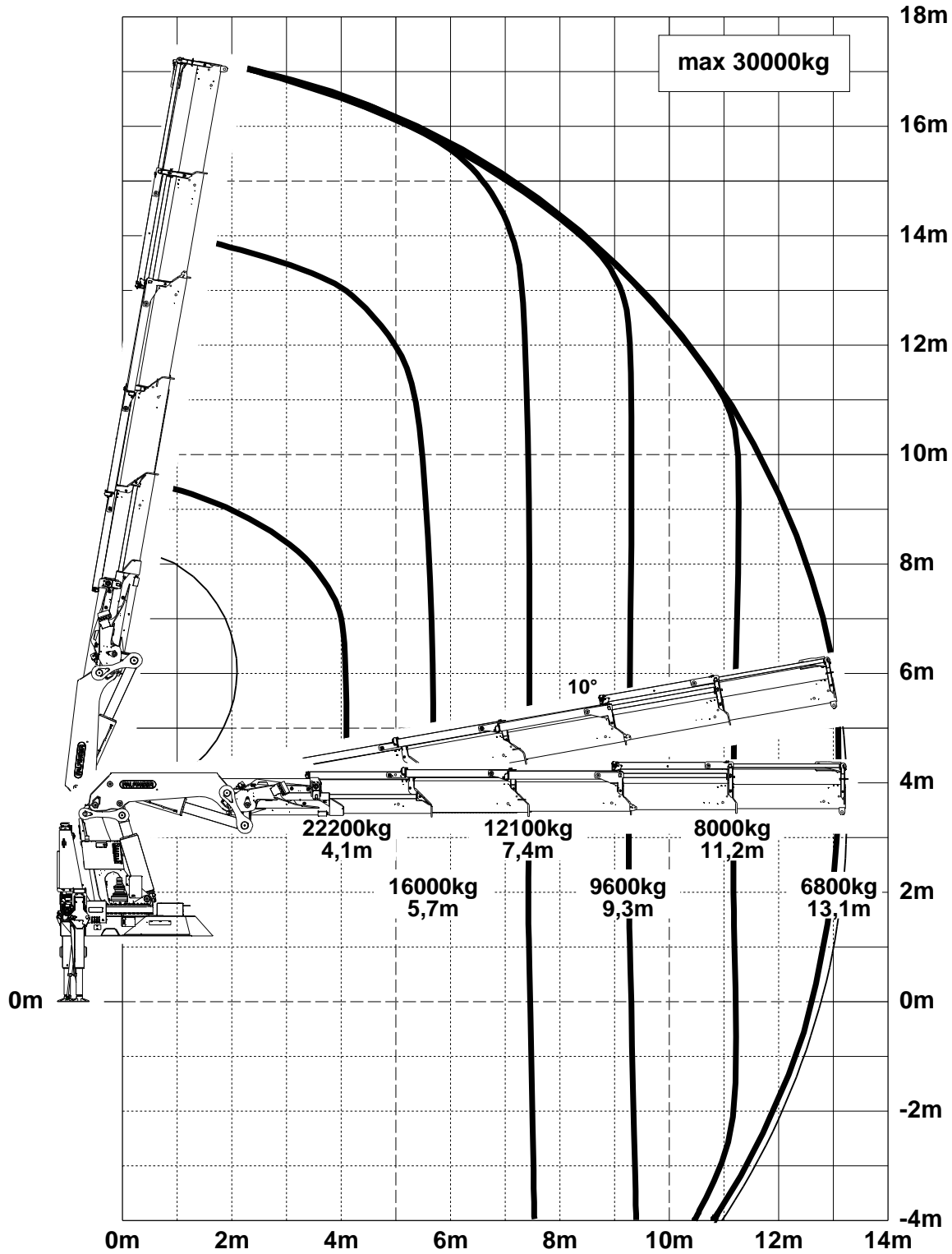


Symbolic crane figure, indications at 20° main boom position & load arm in horizontal position



For Rope winch load capacity refer to page
Page 020.20100

Subject to change, production tolerances have to be taken into account.



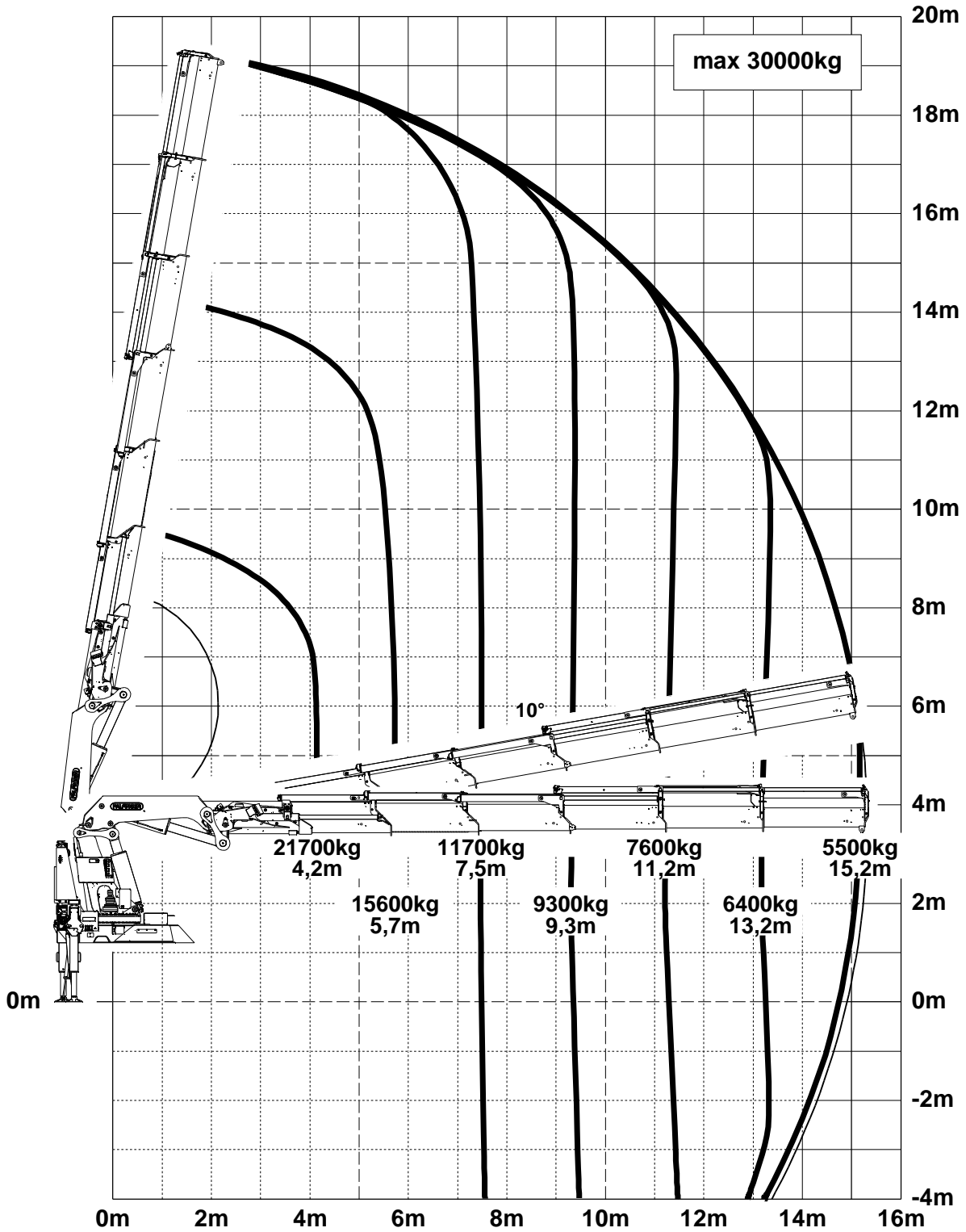
Symbolic crane figure, indications at 20° main boom position & load arm in horizontal position



For Rope winch load capacity refer to page
Page 020.20100

Lifting capacity diagram PK 110002-SH E

Subject to change, production tolerances have to be taken into account.

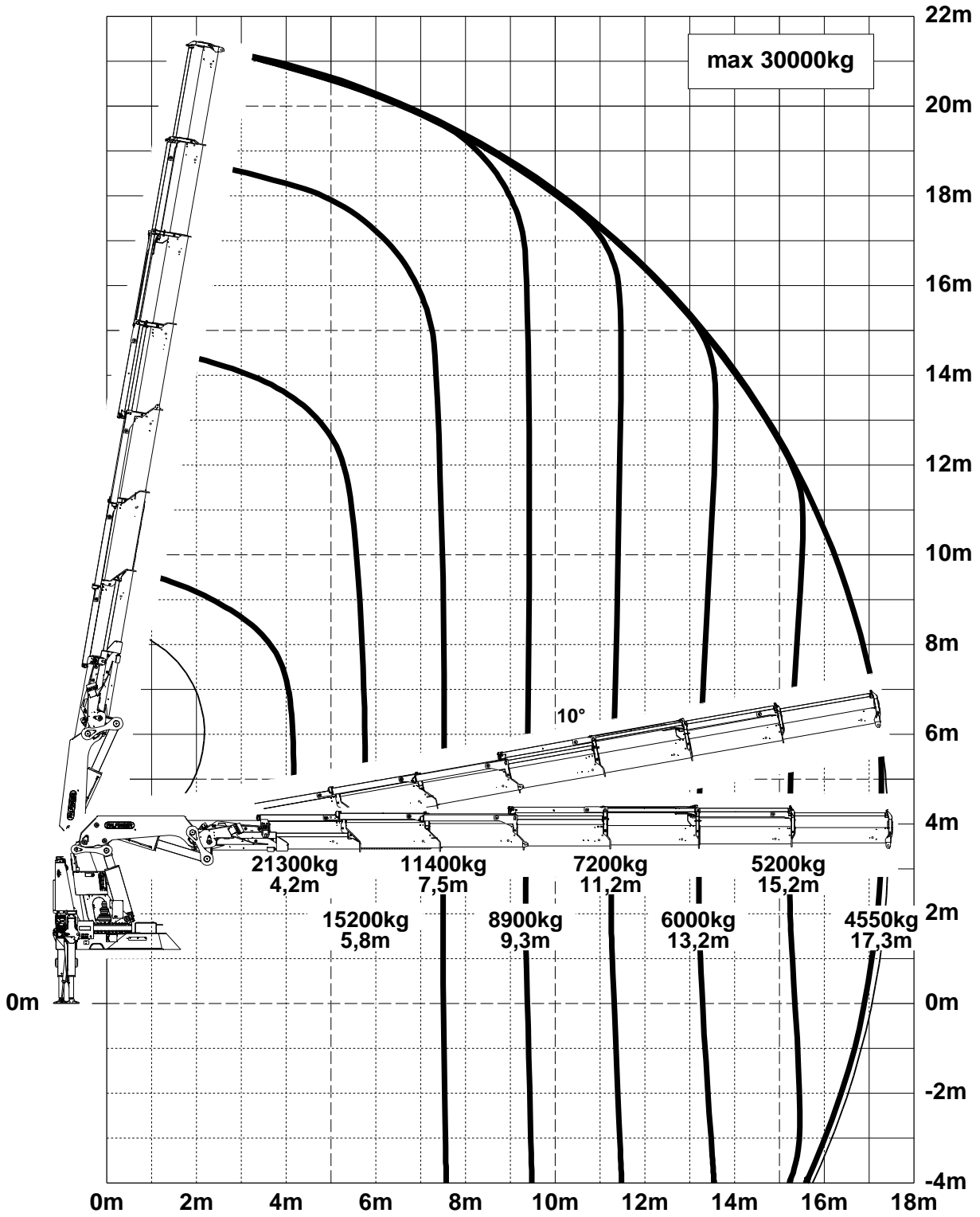


Symbolic crane figure, indications at 20° main boom position & load arm in horizontal position



For Rope winch load capacity refer to page
Page 020.20100

Subject to change, production tolerances have to be taken into account.



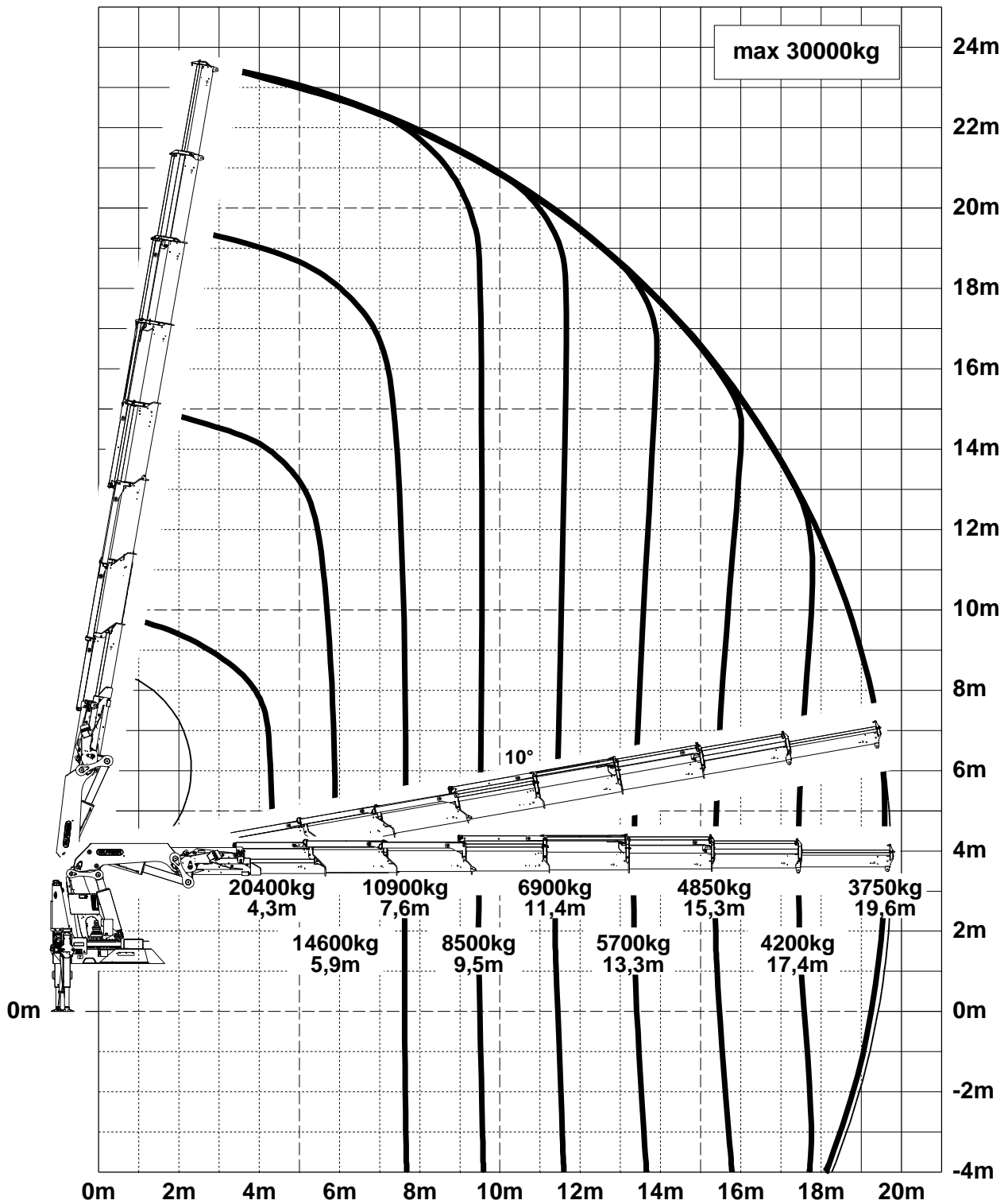
Symbolic crane figure, indications at 20° main boom position & load arm in horizontal position



For Rope winch load capacity refer to page
Page 020.20100

Lifting capacity diagram PK 110002-SH G

Subject to change, production tolerances have to be taken into account.

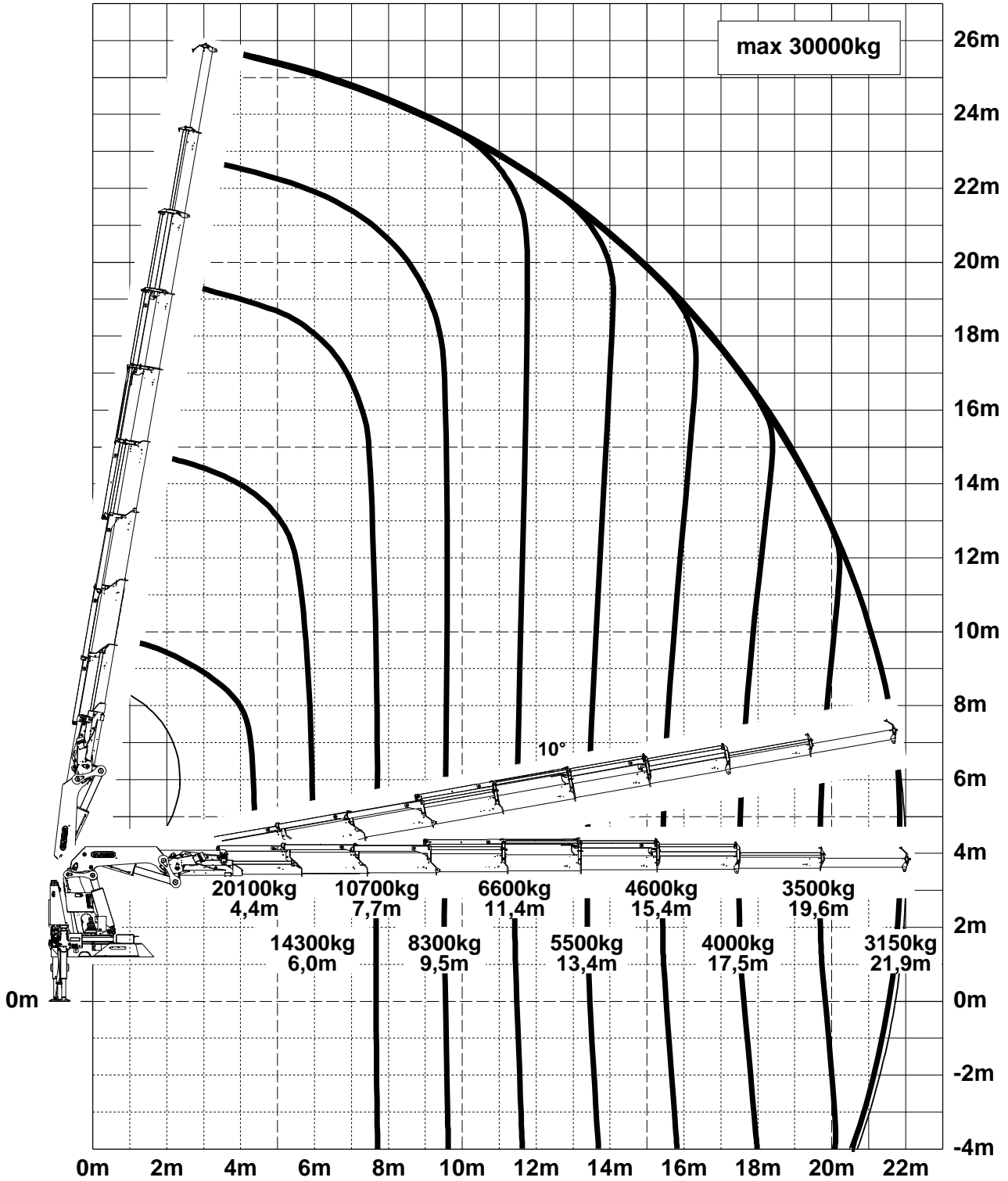


Symbolic crane figure, indications at 20° main boom position & load arm in horizontal position



For Rope winch load capacity refer to page
Page 020.20100

Subject to change, production tolerances have to be taken into account.



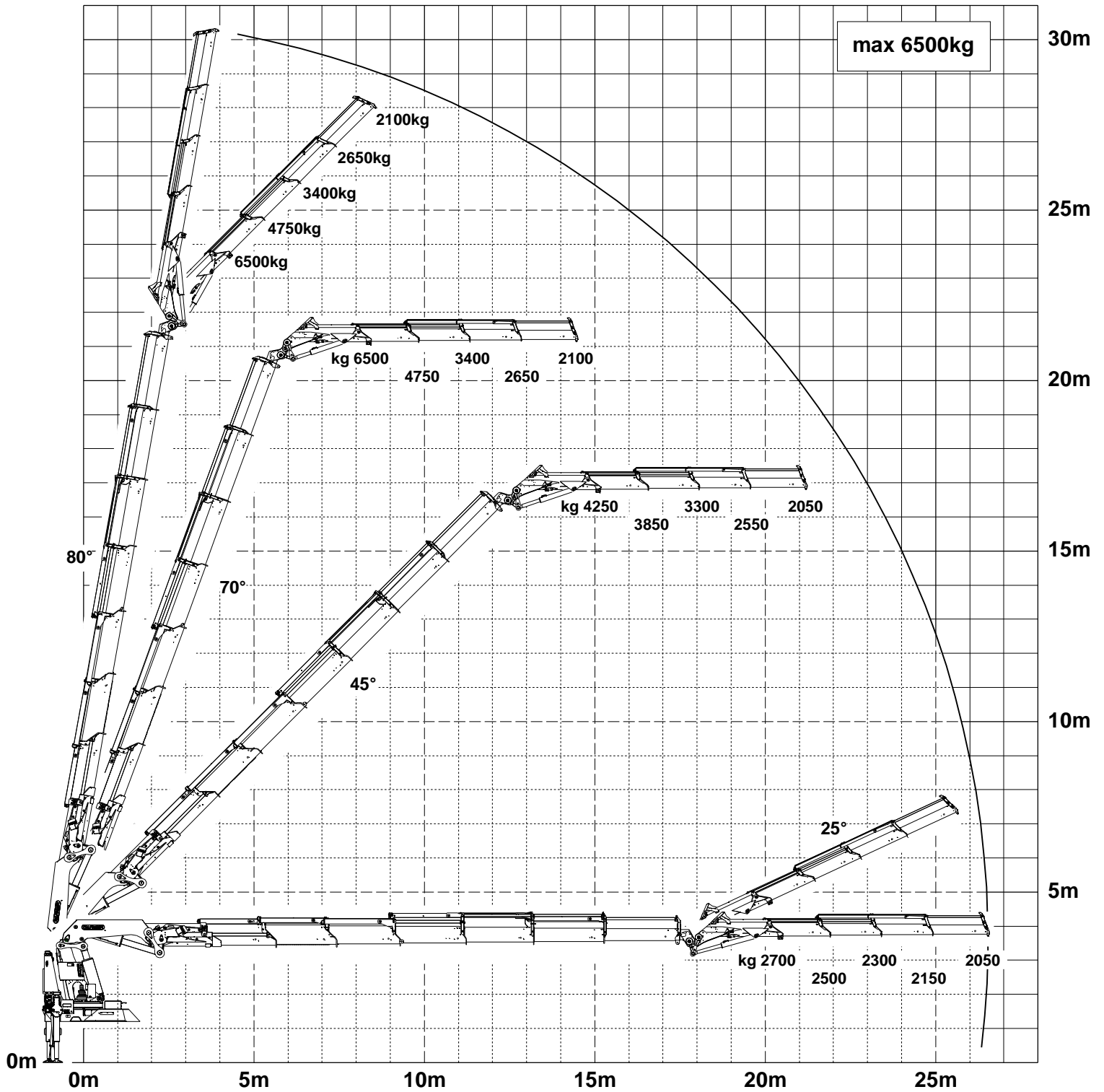
Symbolic crane figure, indications at 20° main boom position & load arm in horizontal position



For Rope winch load capacity refer to page
Page 020.20100

Lifting capacity diagram PK 110002-SH F PJ170 C

Subject to change, production tolerances have to be taken into account.

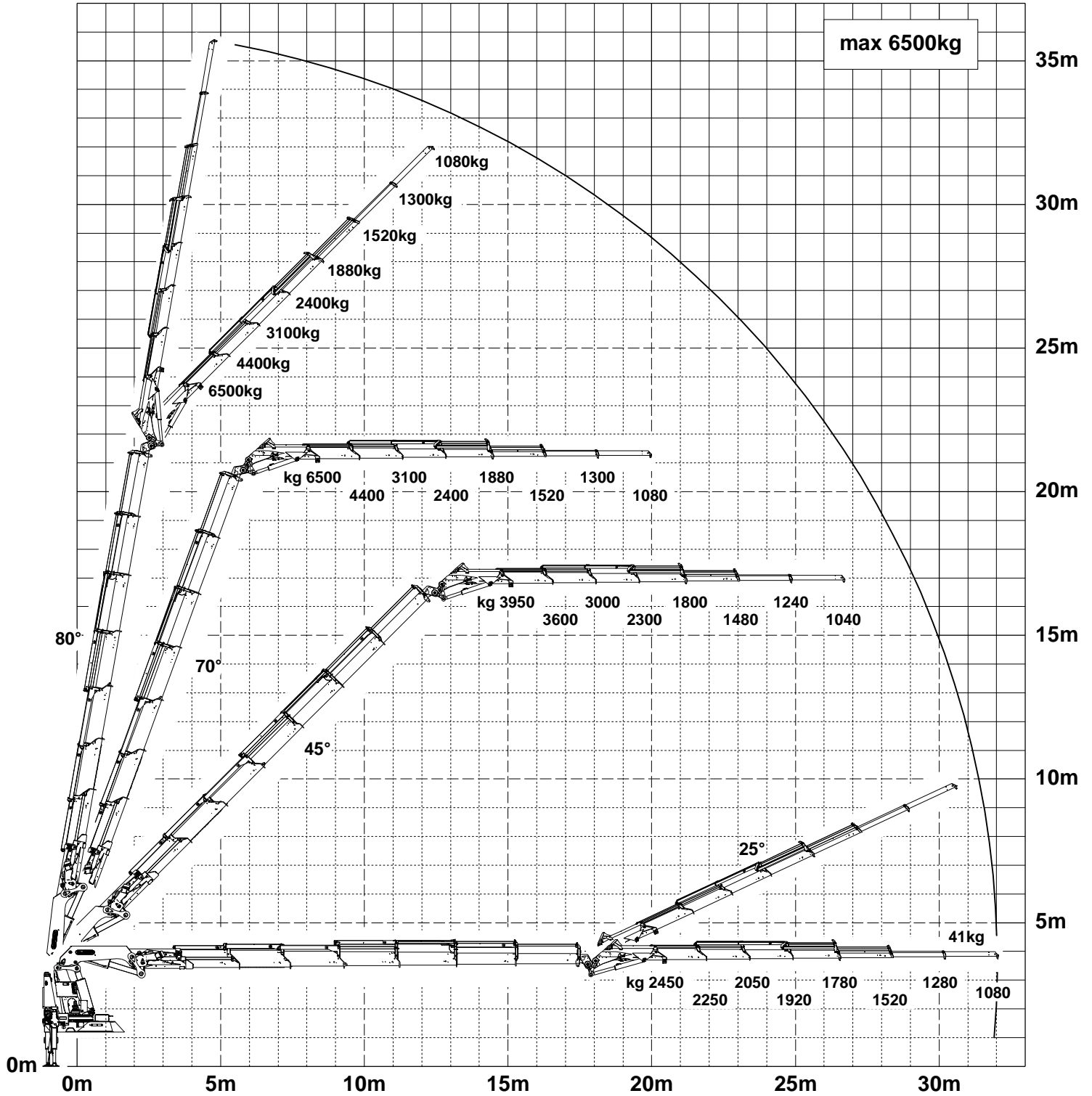


Symbolic crane figure, indications at 20° main boom position & load arm in horizontal position



For Rope winch load capacity refer to page
Page 020.20100

Subject to change, production tolerances have to be taken into account.



When using mechanical boom extensions, the loads shown on the charts need to be reduced by the weight of these extensions.

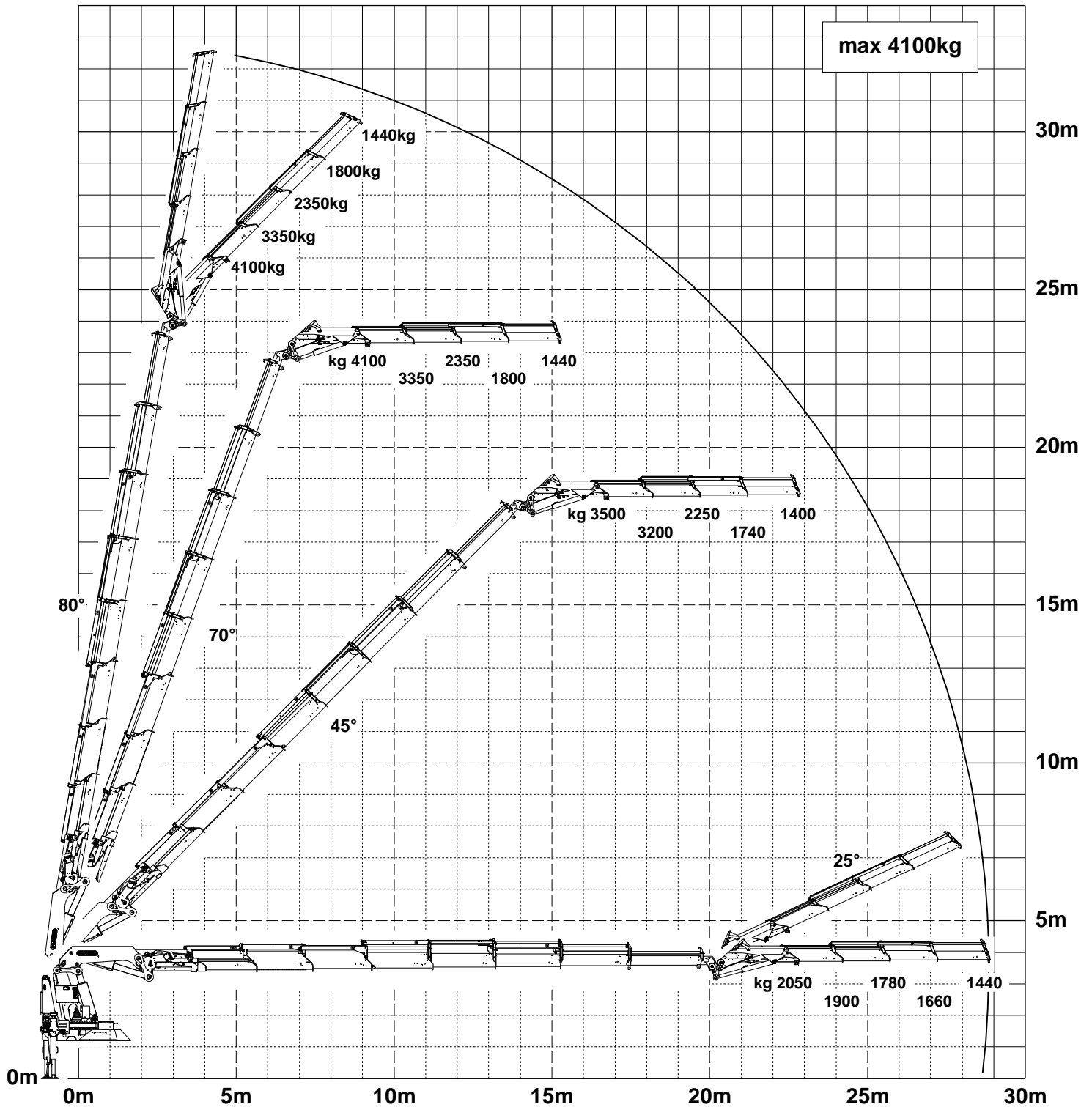
Symbolic crane figure, indications at 20° main boom position & load arm in horizontal position



For Rope winch load capacity refer to page
Page 020.20100

Lifting capacity diagram PK 110002-SH G PJ170 C

Subject to change, production tolerances have to be taken into account.



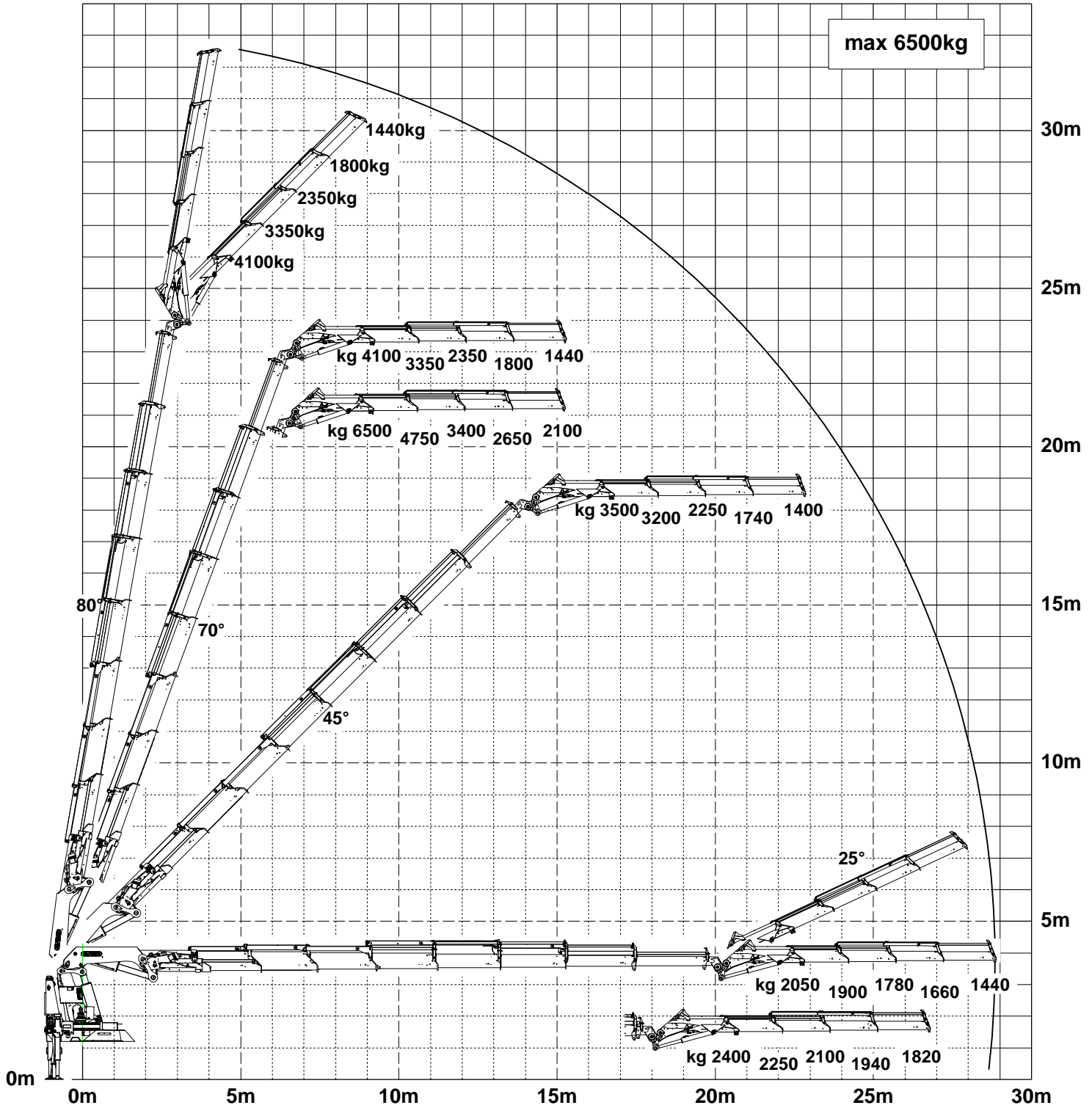
Symbolic crane figure, indications at 20° main boom position & load arm in horizontal position



For Rope winch load capacity refer to page
Page 020.20100

Subject to change, production tolerances have to be taken into account.

DPS ^{plus}
Dual Power System



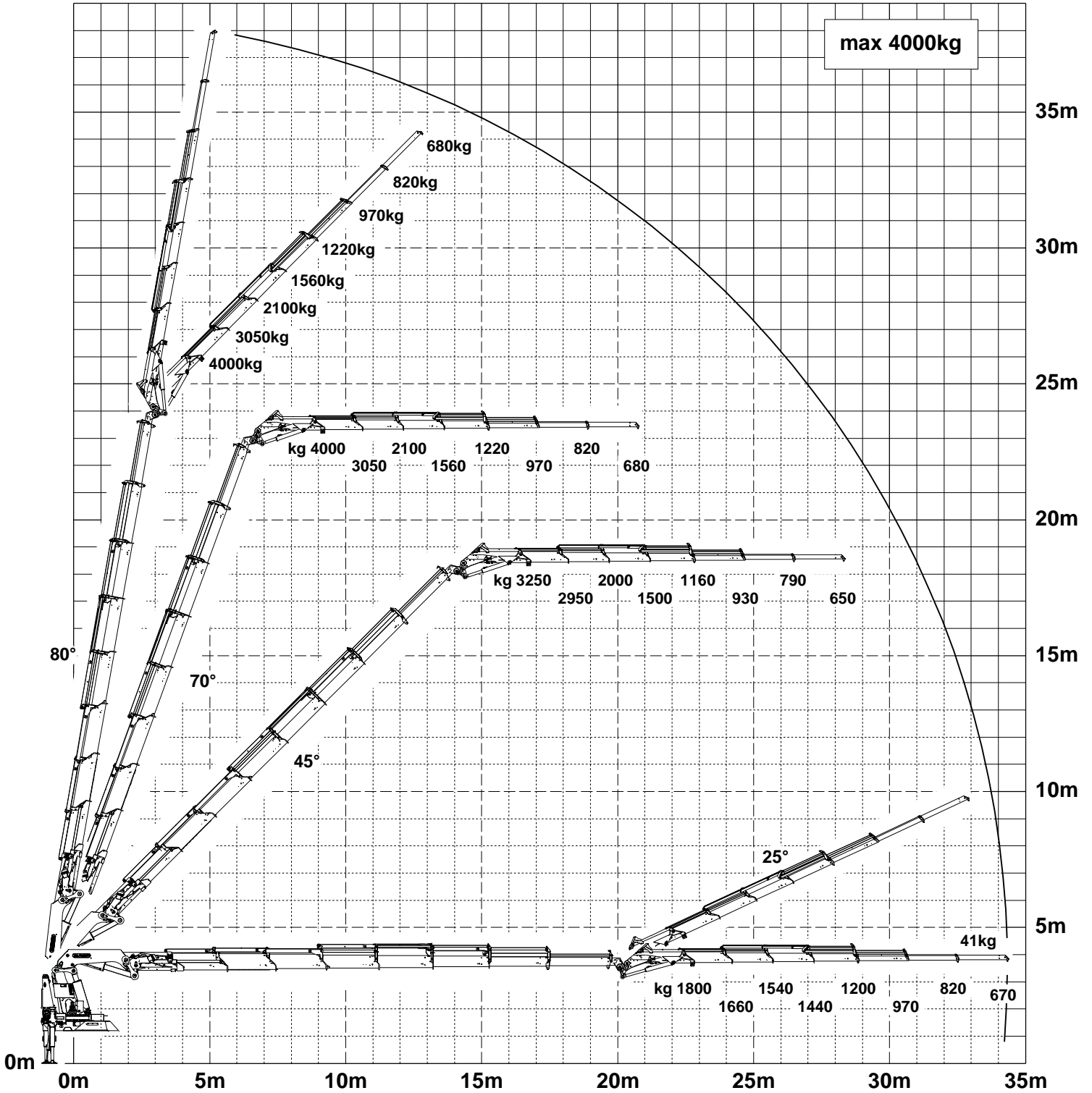
Symbolic crane figure, indications at 20° main boom position & load arm in horizontal position



For Rope winch load capacity refer to page
Page 020.20100

Lifting capacity diagram PK 110002-SH G PJ170 EJV1

Subject to change, production tolerances have to be taken into account.



When using mechanical boom extensions, the loads shown on the charts need to be reduced by the weight of these extensions.

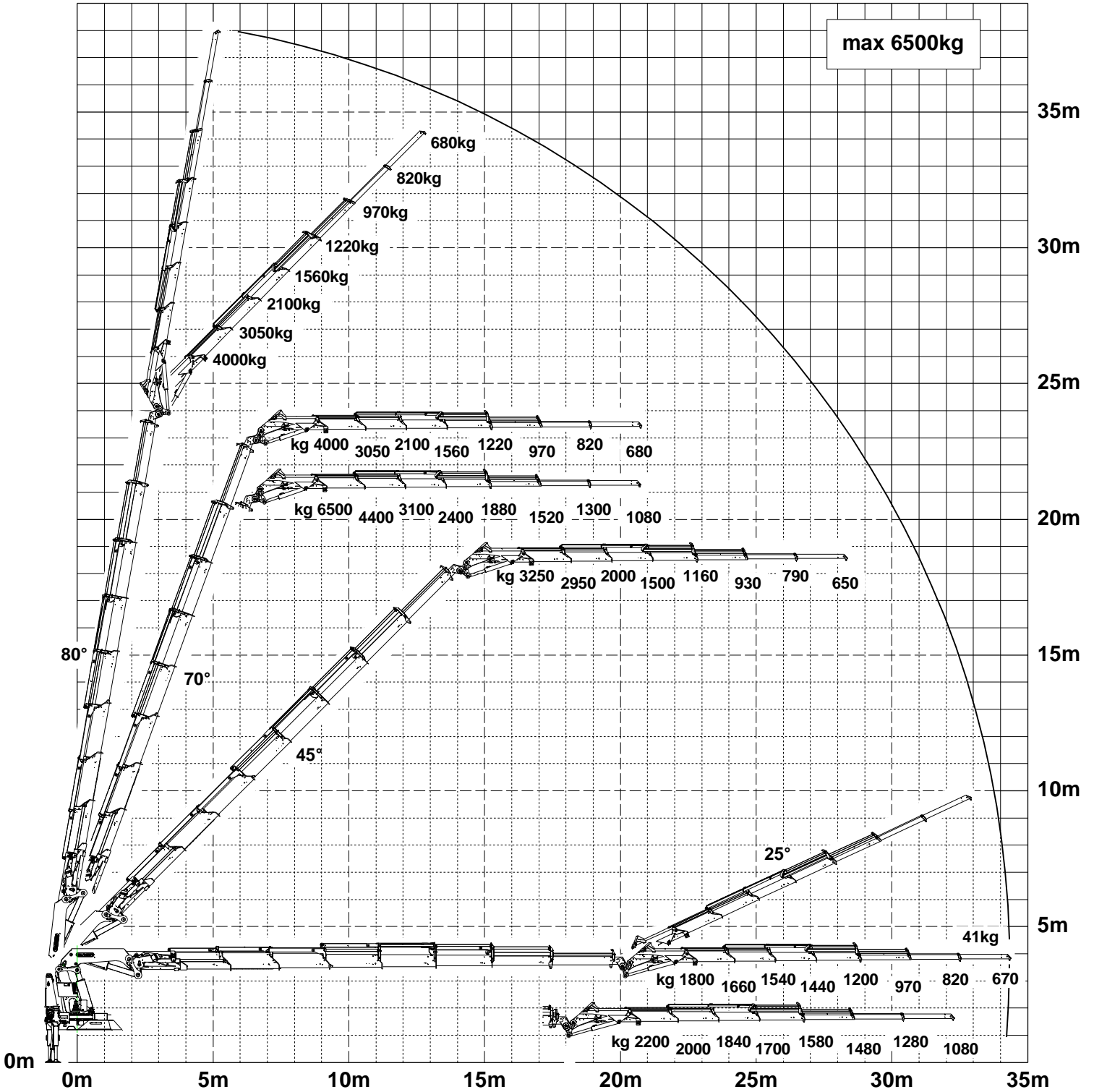
Symbolic crane figure, indications at 20° main boom position & load arm in horizontal position



For Rope winch load capacity refer to page
Page 020.20100

Subject to change, production tolerances have to be taken into account.

DPS plus
Dual Power System



When using mechanical boom extensions, the loads shown on the charts need to be reduced by the weight of these extensions.

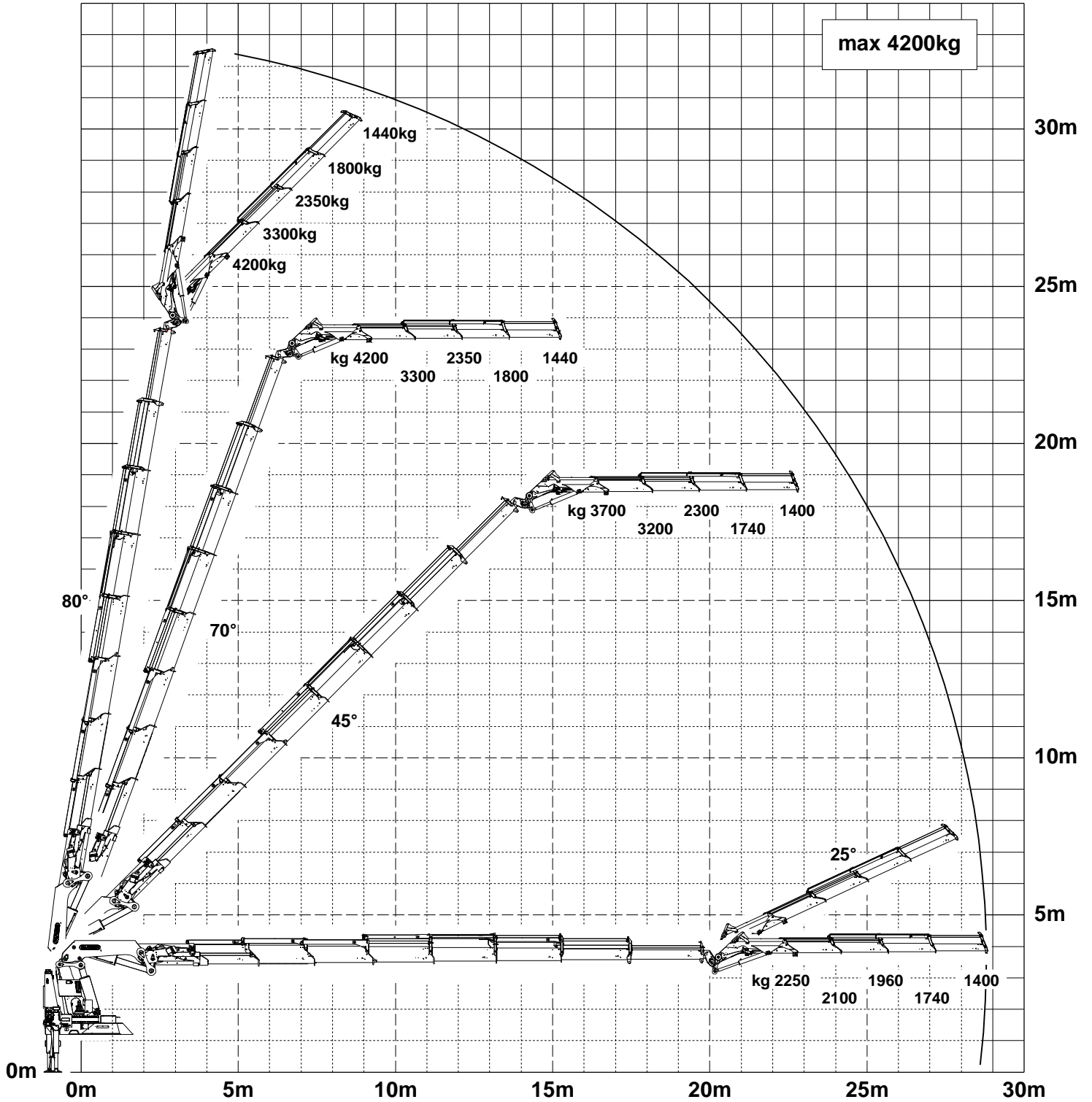
Symbolic crane figure, indications at 20° main boom position & load arm in horizontal position



For Rope winch load capacity refer to page
Page 020.20100

Lifting capacity diagram PK 110002-SH G PJ125 C

Subject to change, production tolerances have to be taken into account.

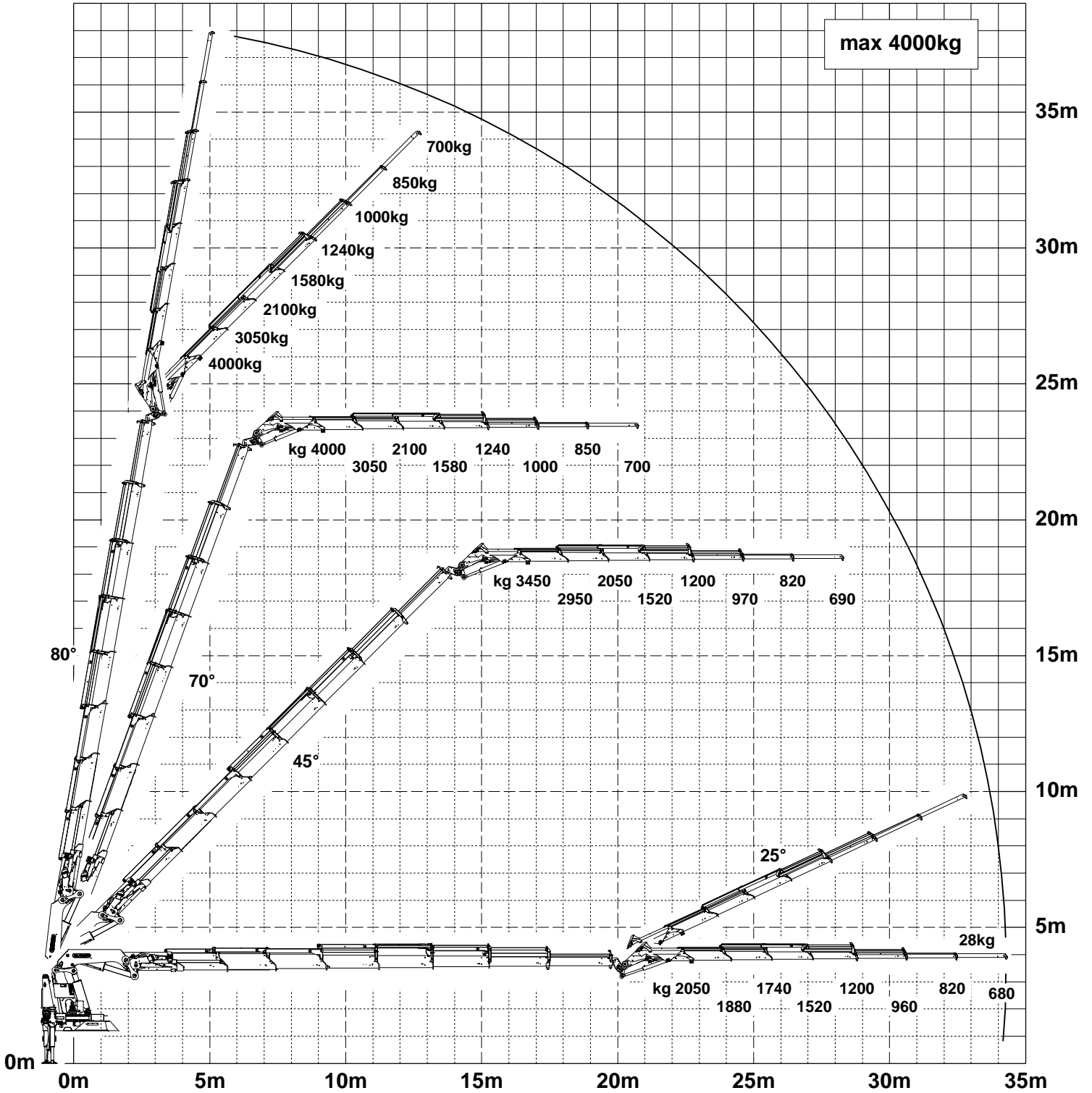


Symbolic crane figure, indications at 20° main boom position & load arm in horizontal position



For Rope winch load capacity refer to page
Page 020.20100

Subject to change, production tolerances have to be taken into account.



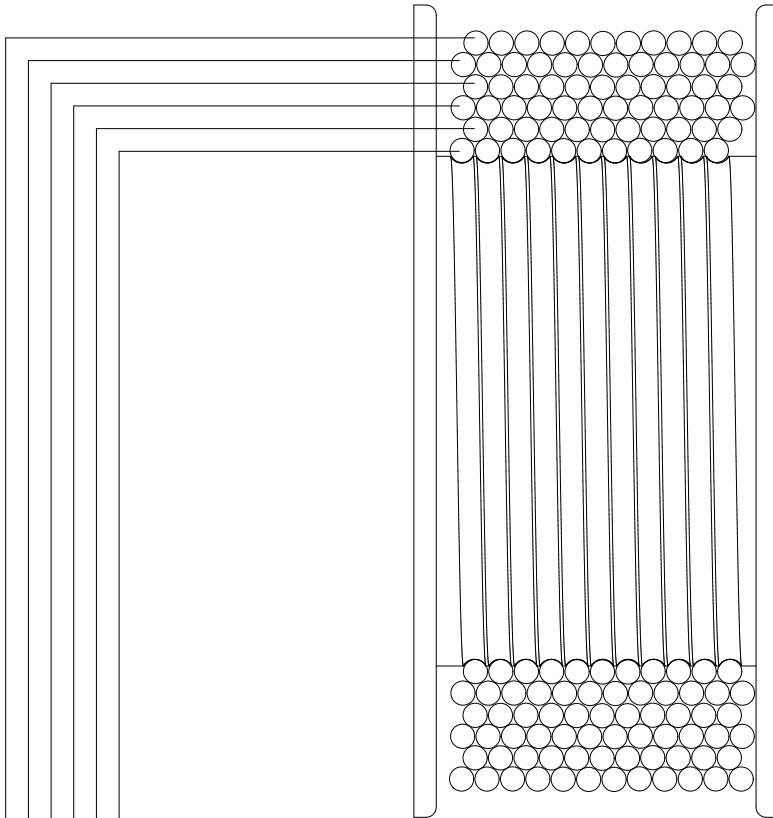
When using mechanical boom extensions, the loads shown on the charts need to be reduced by the weight of these extensions.


Symbolic crane figure, indications at 20° main boom position & load arm in horizontal position

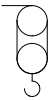


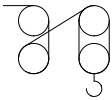
For Rope winch load capacity refer to page
Page 020.20100

Subject to change, production tolerances have to be taken into account.



Strands	
1STRAN	
	
Load capacity	Wire reception
1 3500 kg [7,720 lb]	13,1 m [43'0"]
2 3260 kg [7,190 lb]	26,2 m [85'11"]
3 3050 kg [6,720 lb]	41,2 m [135'2"]
4 2870 kg [6,330 lb]	56,1 m [184'1"]
5 2705 kg [5,960 lb]	73,1 m [239'10"]
6 2560 kg [5,640 lb]	89,8 m [294'7"]

Strands	
2STRAN	
	
Load capacity	Wire reception
7000 kg [15,430 lb]	13,1 m [43'0"]
6520 kg [14,370 lb]	26,2 m [85'11"]
6100 kg [13,450 lb]	41,2 m [135'2"]
5740 kg [12,650 lb]	56,1 m [184'1"]
5410 kg [11,930 lb]	73,1 m [239'10"]
5120 kg [11,290 lb]	89,8 m [294'7"]

Strands	
4STRAN	
	
Load capacity	Wire reception
14000 kg [30,860 lb]	13,1 m [43'0"]
13040 kg [28,750 lb]	26,2 m [85'11"]
12200 kg [26,900 lb]	41,2 m [135'2"]
11480 kg [25,310 lb]	56,1 m [184'1"]
10820 kg [23,850 lb]	73,1 m [239'10"]
10240 kg [22,570 lb]	89,8 m [294'7"]

Weights of load handling devices are part of the load lifted and must be deducted from the capacity.
Weight of the load handling equipment must be deducted from the lifting capacity.

