

PHT 05 SLD 3

**USER-FRIENDLY
AND EFFICIENT
5.5 TO 7.5 T CHASSIS**

LIFETIME EXCELLENCE



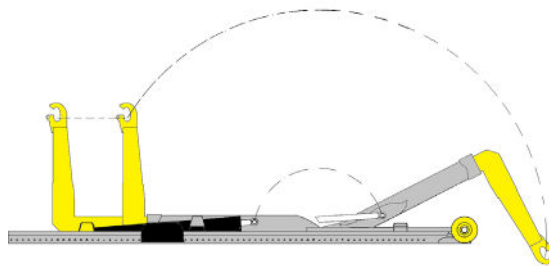
TECHNICAL SPECIFICATIONS

PHT 05 SLD 3

Standard	NF - DIN - CZ
Hook height	920 - 900 - 1000 mm
Transport height	180 mm
Rail width	1060 mm
Lengths	3000 - 3150 - 3300 - 3600 - 3750 - 3900 mm
Average weight	660 to 685 kg
Rear locking	Hydraulic
Pressure	25 Mpa
GVW	5.5 to 7.5 t

PHT 05 SLD 3 UNI

Standard	NF - GUIMA
Hook height	920 - 900 mm
Transport height	180 mm
Rail width	850 und 1060 mm
Lengths	3000 - 3150 - 3300 - 3600 - 3750 - 3900 mm
Average weight	660 to 685 kg
Rear locking	Hydraulic
Pressure	25 Mpa
GVW	5.5 to 7.5 t



YOUR BENEFITS

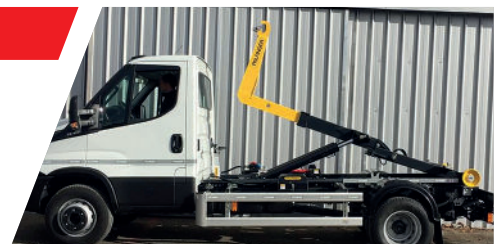


OPTIMISED PAYLOAD

- The PHT 05 has been developed to minimize equipment weight and save maximum available payload. The lightweight design is strategically reinforced where necessary to save weight without compromising strength.
- Use of high-tensile steel for a stronger resistant steel conception allows to free up payload.

SERVICE-FRIENDLY DESIGN

- **Easy maintenance** thanks to self lubricating bushes, resistant to wear even under heavy loads & **reduced downtime** by easy access to all components.
- **Easy mounting** with dedicated mouting kit for each main vehicle brand.
- **Dense Palfinger Service network** for complete, fast and optimal support.



VERSATILITY

- Make a profitable investment by using one truck for multiple activities. Allows the loading, unloading and tipping of different containers.
- Hydraulic options can be installed.
- Manage up to 5 t of payload depending on the chassis and container.
- Telescopic design allows flexibility in the choice of container lengths.

DESIGN FOR 5.5 TO 7.5 T CHASSIS

The PHT05 has been ideally designed for small chassis. Its performance and simplicity of use make it an everyday ally for multiple activities.

- CRAFTSMEN: gardening, bricklaying, waste collection
- PUBLIC SERVICES: municipalities

OPTIMISED PAYLOAD FOR INCREASED PROFITABILITY



INCREASED LIFETIME

- **Efficient mounting:** Screwed mounting of brackets and accessories- all treated against corrosion - increases the lifetime of PHT 05 SLD 3 and allows quick replacement of the accessories.
- **Reliability:** The PHT 05 SLD 3 is ex-works final coated before assembling for efficient protection of main components: Black RAL 9005 unit, black cylinders, yellow rear pulleys and arm. Small mechanical parts are zinc nickel treated.

EASY DRIVE CONTROL

- **Ergonomic and intuitive cab controls** for simple and reliable operations
- 2 additional functions: Diagnostic mode and emergency mode



SAFETY

- Equipment meets all requirements of European safety and security directives.
- Automatic safety shutdown of the system after 2 minutes without activation.
- Safety bar available to keep the equipment in its position during maintenance for safer operations.

