

## NEW CiTy



The new designed **CiTy** hookloader shows revolutionary improvements. The use of new materials and technologies allow higher payloads, simpler operation and many other benefits described below :

### 1- BENEFITS

- **One model**  
On type for all trucks from 3.5T to 5.5T GVW
- **Increased payload**  
Weight reduced by 10 %
- **Long life and reliability**  
All units are POP :
  - Treated pins, Zinc Nickel protected mechanical parts
  - All units are painted : Grey Renault, Cylinder black RAL9011, Arm and rear pulley RAL1003Main valve cover  
Optimized routing of hoses  
Protected rear locking cylinder



## Easy and quick mounting, interchangeability of the accessories

Bolted mounting concept SAM

- Kit of mounting plates for Daily, Master Pro, Maxity, Cabstar
- Bootable accessories (even the intermediary frame for Maxity)



- **Reduced maintenance**

Lubrication free bushes

- **Ergonomic and easy to use**

New control system

- Cab controls more ergonomic and intuitive
- Additional functions : Diagnostic mode + emergency mode

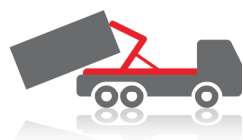
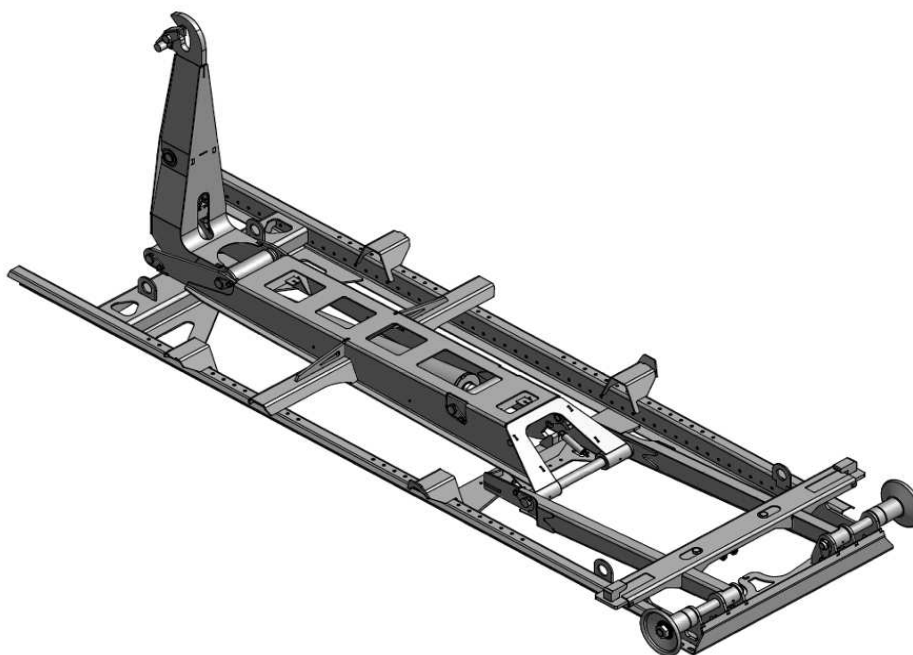
- **Environment friendly**

Biodegradable oil as option



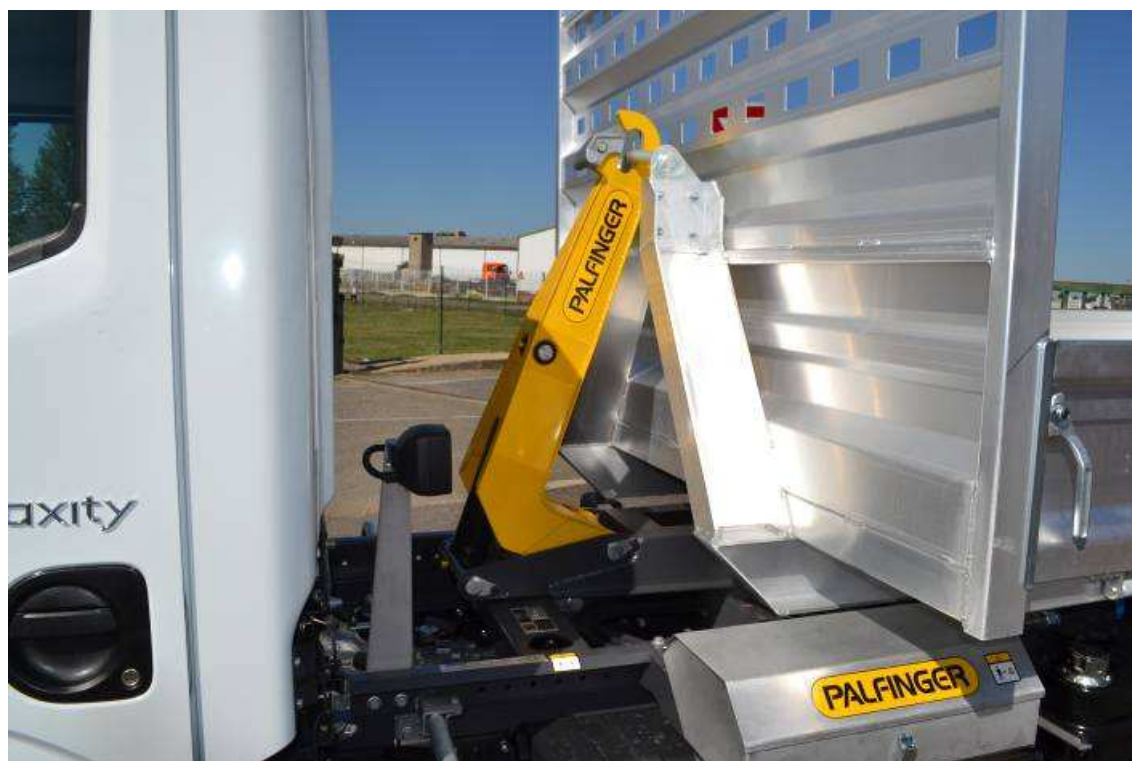
## 2- EVOLUTIONS :

- Due to the weight reduction the new CiTy is able to replace C2 and C3
- C3 UNI disappears even in tuning
- C4 remains unchanged until it will be replaced by a short T05



## 3- SPECIFICATIONS :

	CiTy
standard	NF - DIN – GUIMA
Hook height	900/920
Transport height	160
Lengths	2760 - 2910 - 3110
Average weight	355kg
Tipping cylinder	Ø 100/50
Rear locking	Hydraulic
Pressure	25 mpa
GVW	3.5T to 5.5T





## 4 - AVAILABILITY

- Length 2910
  - Orders from 1st of February to 31st of March : Delivery April 2013
  - Orders in April: Lead time 10 to 15 working days
  - Orders from May : Lead time 5 working days
- Others lengths
  - Orders in February : Delivery April 2013
  - Orders from March : 5 weeks
- Shutdown of the C02 & C03 : in April
- Availability of the technical data on PATIS : January  
Leaflets : beginning of February

