

Technical Specification

Hydraulic crane

PK 295 TEC

(S425SKBS11)

Edition 12/2022

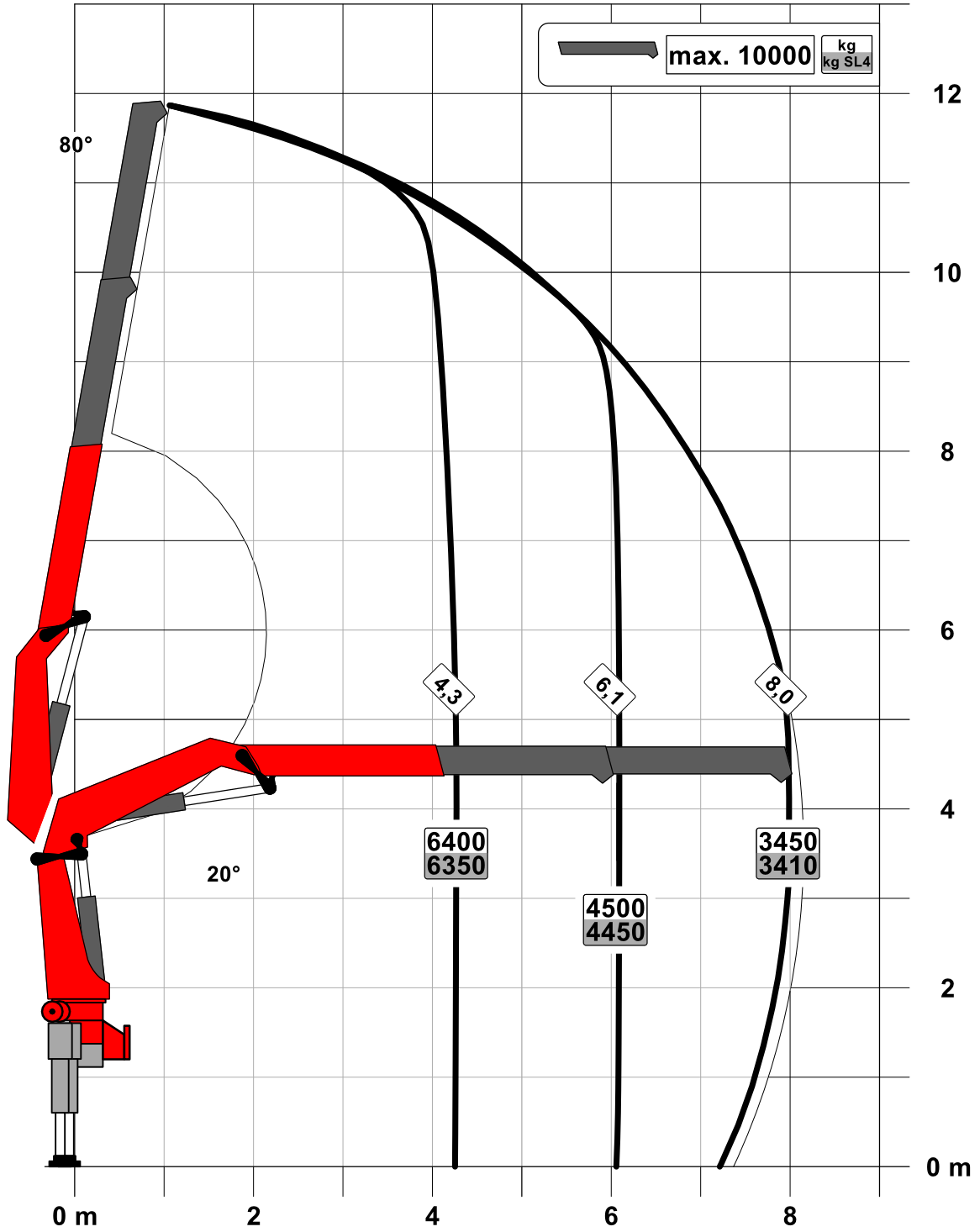
EN

PALFINGER AG
Lamprechtshausener Bundesstraße 8
5101 Bergheim / Austria
www.palfinger.com

Page	
020	LIFTING CAPACITY DIAGRAM
020.01200	Lifting capacity diagram PK 295 TEC A
020.02200	Lifting capacity diagram PK 295 TEC B
020.03200	Lifting capacity diagram PK 295 TEC C
020.04200	Lifting capacity diagram PK 295 TEC D
020.05200	Lifting capacity diagram PK 295 TEC E
020.06200	Lifting capacity diagram PK 295 TEC F
020.07200	Lifting capacity diagram PK 295 TEC G
020.08200	Lifting capacity diagram PK 295 TEC C PJ090 B DPS-C
020.08210	Lifting capacity diagram PK 295 TEC C PJ090 CJV1 DPS-C
020.08210 FPM	Working area FPM PK 295 TEC C PJ090 C
020.09200	Lifting capacity diagram PK 295 TEC D PJ090 B DPS-C
020.09200 FPM	Working area FPM PK 295 TEC D PJ090 B
020.09210	Lifting capacity diagram PK 295 TEC D PJ090 CJV1 DPS-C
020.10200	Lifting capacity diagram PK 295 TEC D PJ075 A DPS-C
020.10200 FPM	Working area FPM PK 295 TEC D PJ075 A
020.10210	Lifting capacity diagram PK 295 TEC D PJ075 BJV2 DPS-C
020.10210 FPM	Working area FPM PK 295 TEC D PJ075 B
020.11200	Lifting capacity diagram PK 295 TEC E PJ075 A DPS-C
020.11200 FPM	Working area FPM PK 295 TEC E PJ075 A
020.11210	Lifting capacity diagram PK 295 TEC E PJ075 BJV2 DPS-C
020.21000	Load capacity-Rope winch 2.5t

Subject to change, production tolerances have to be taken into account.

Symbolic crane figure

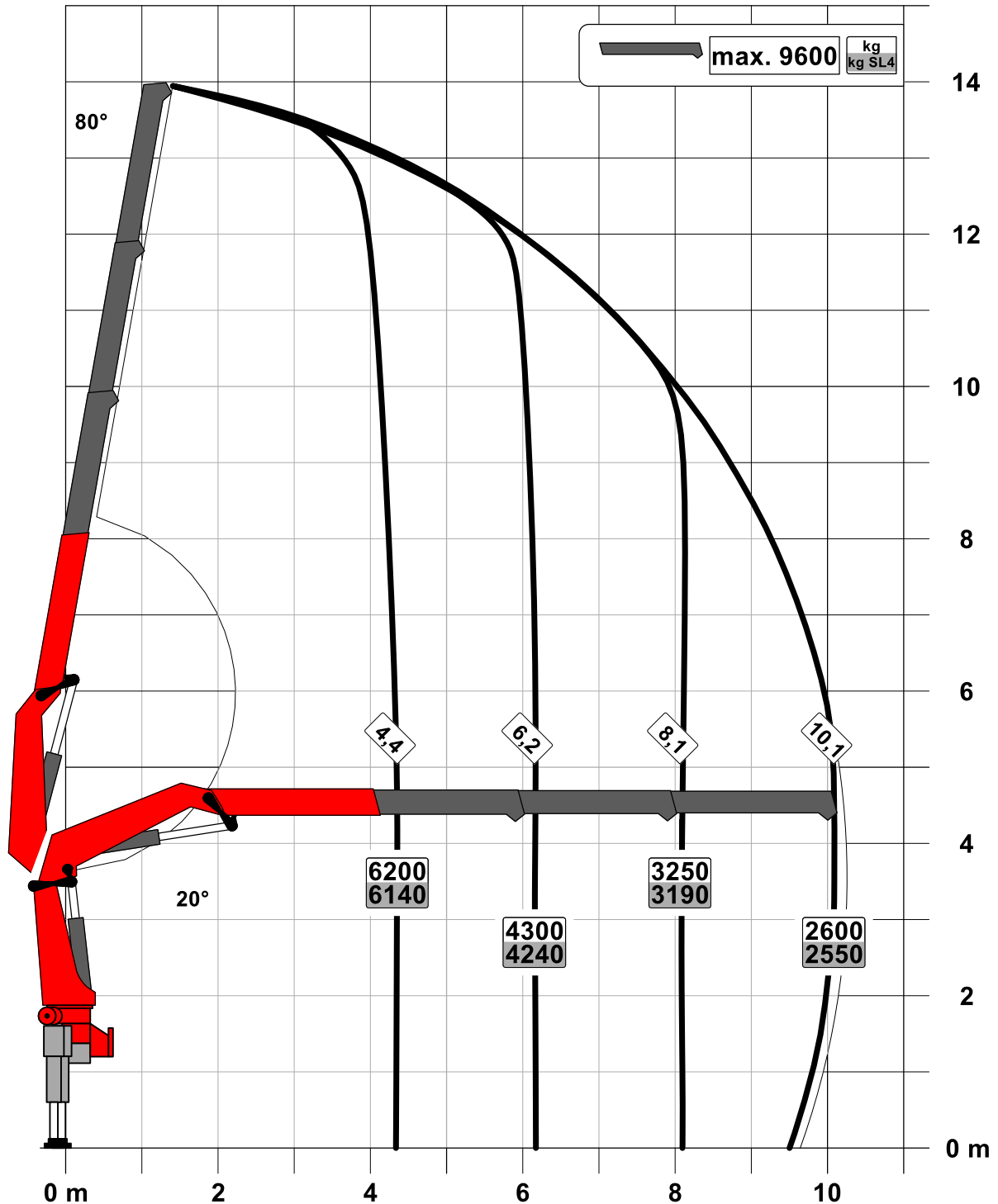


For Rope winch load capacity refer to page
Page 020.21000

Lifting capacity diagram PK 295 TEC B

Subject to change, production tolerances have to be taken into account.

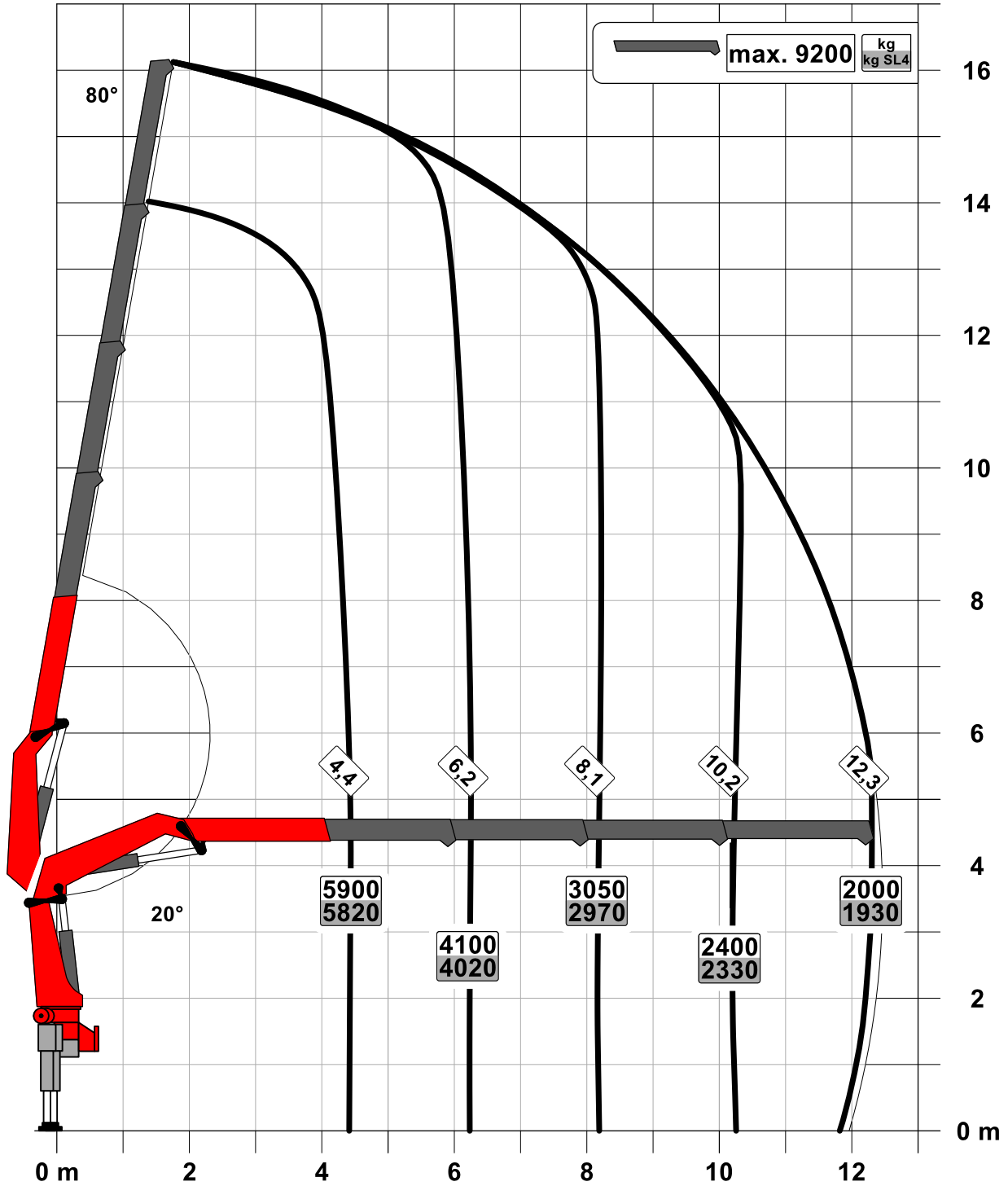
Symbolic crane figure



For Rope winch load capacity refer to page
Page 020.21000

Subject to change, production tolerances have to be taken into account.

Symbolic crane figure

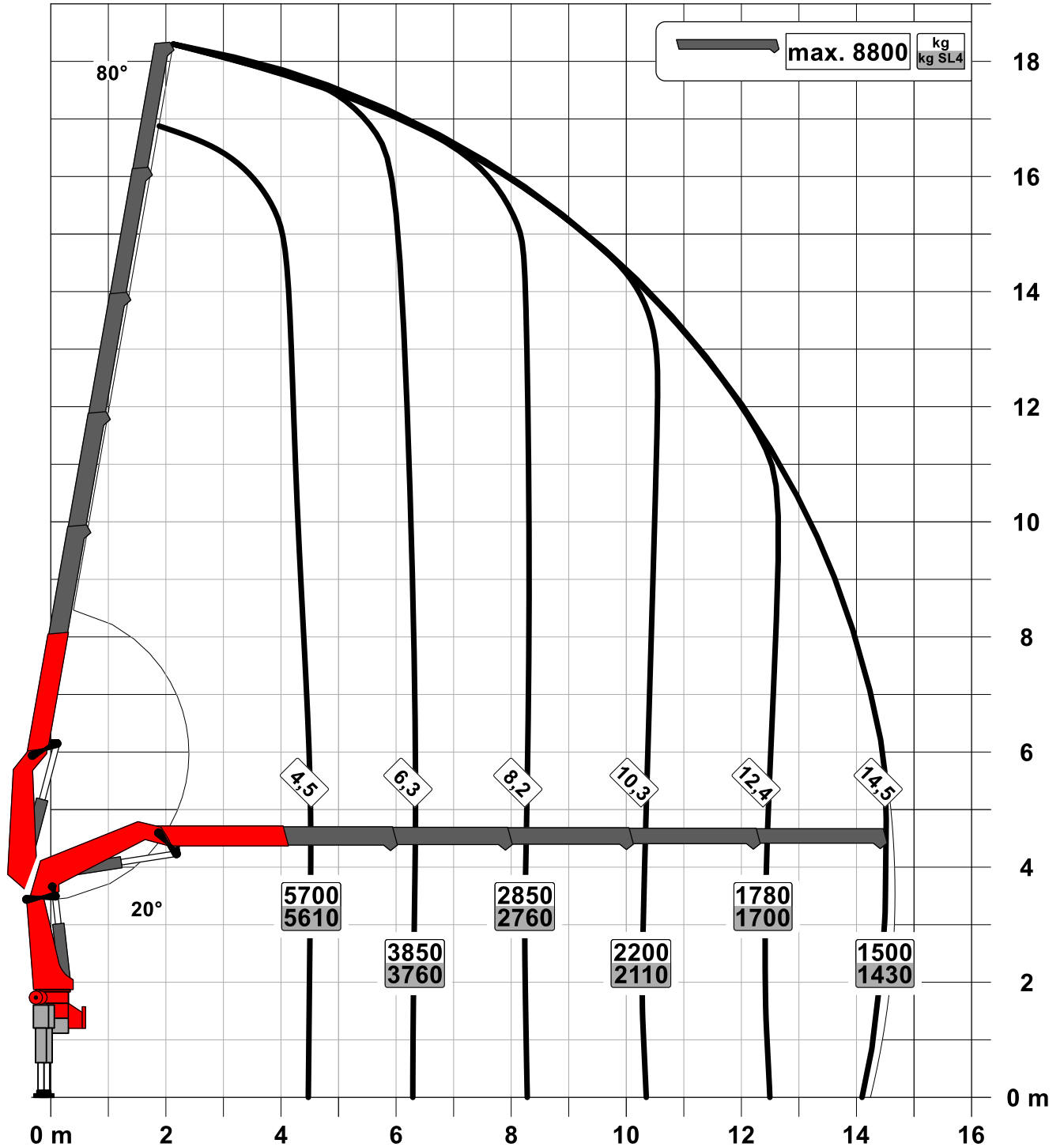


For Rope winch load capacity refer to page
Page 020.21000

Lifting capacity diagram PK 295 TEC D

Subject to change, production tolerances have to be taken into account.

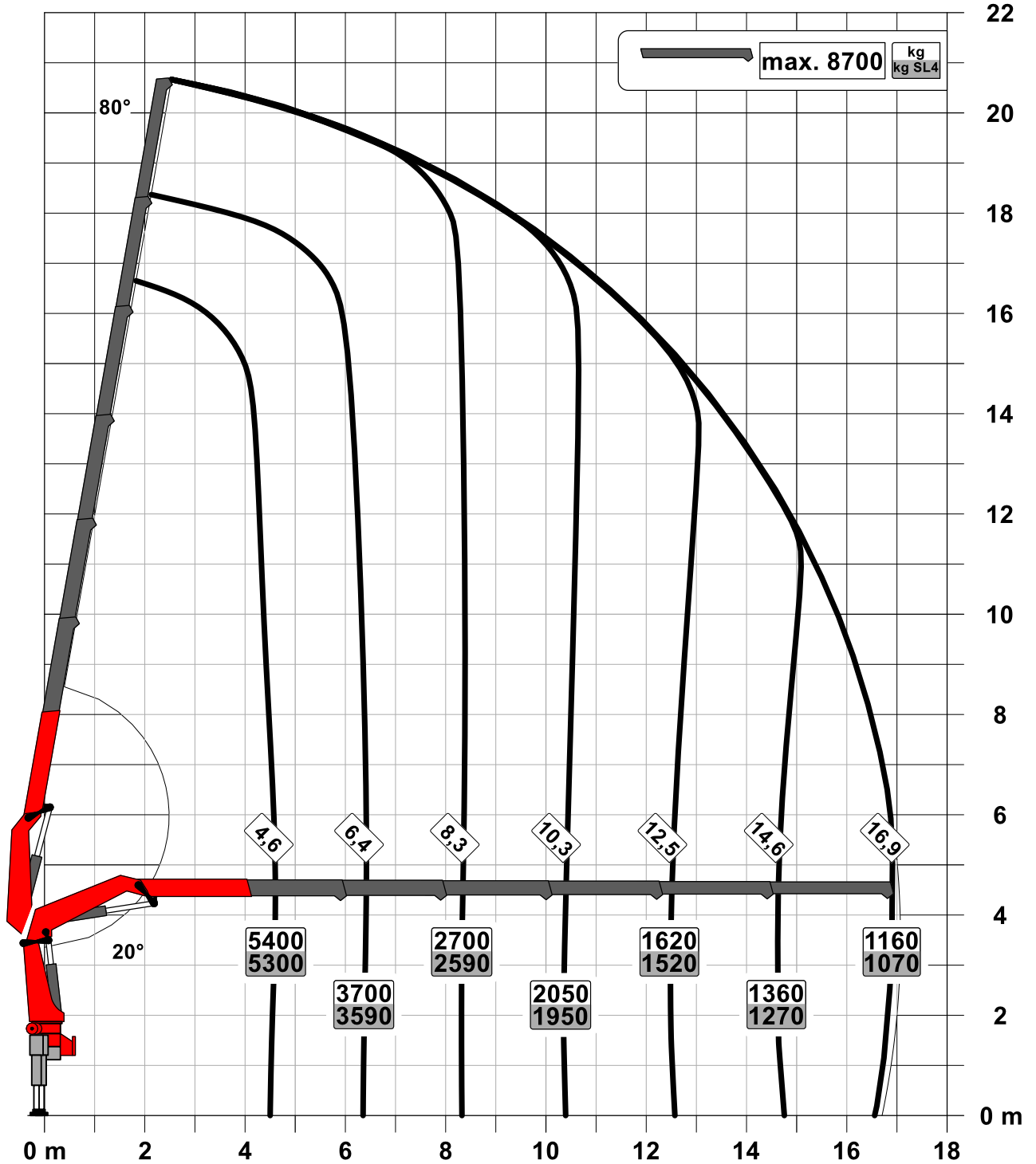
Symbolic crane figure



For Rope winch load capacity refer to page
Page 020.21000

Subject to change, production tolerances have to be taken into account.

Symbolic crane figure

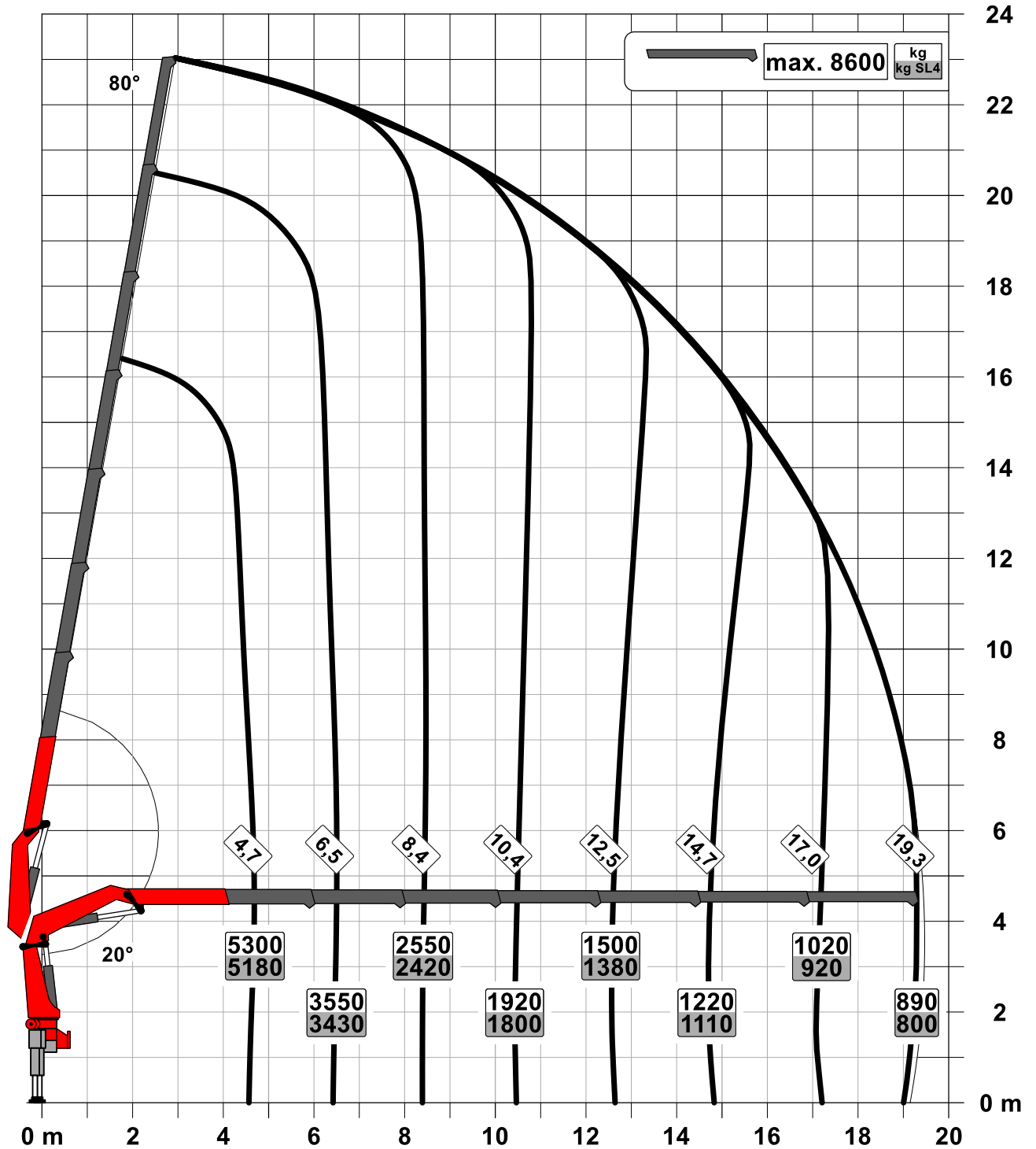


For Rope winch load capacity refer to page
Page 020.21000

Lifting capacity diagram PK 295 TEC F

Subject to change, production tolerances have to be taken into account.

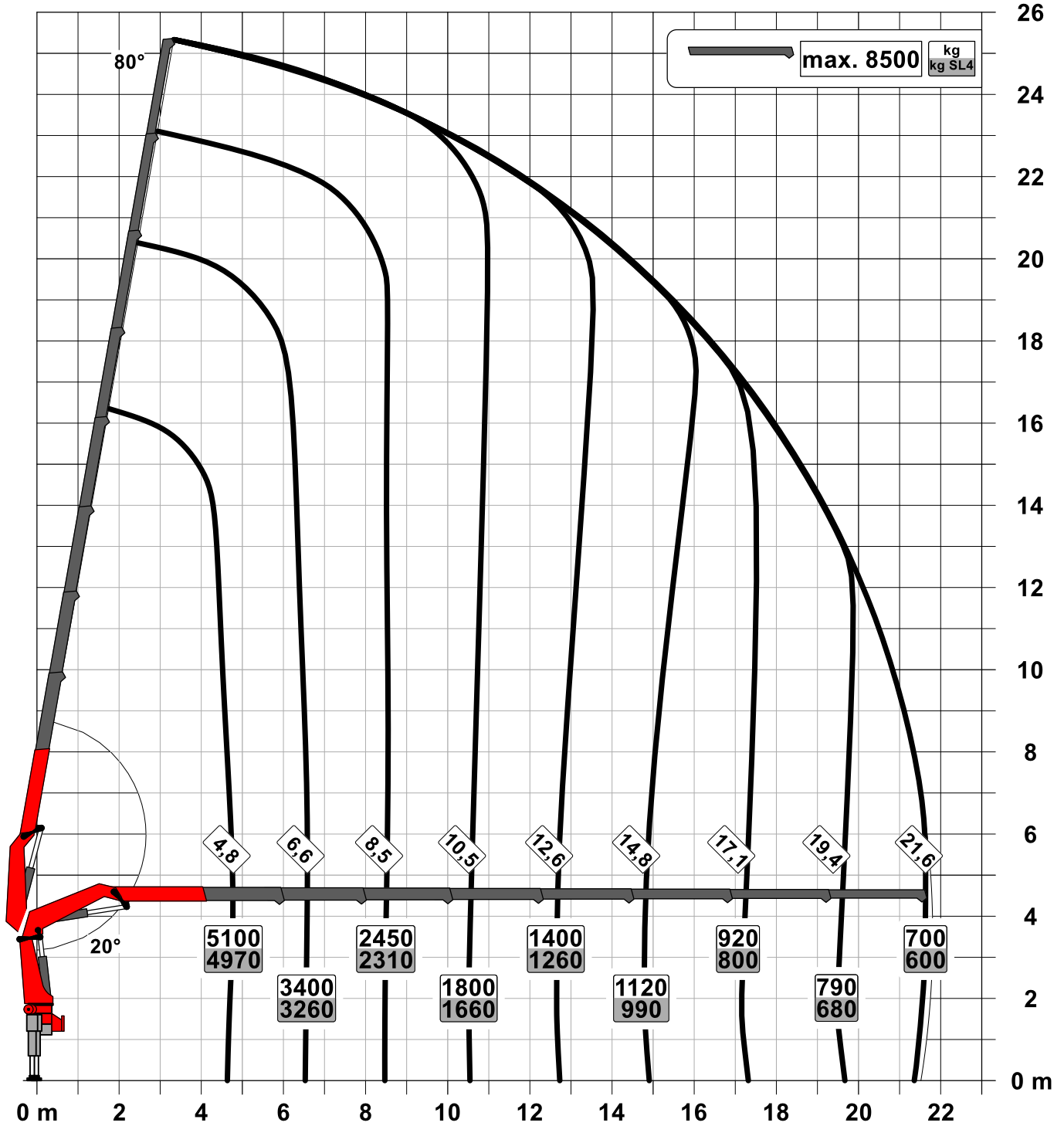
Symbolic crane figure



For Rope winch load capacity refer to page
Page 020.21000

Subject to change, production tolerances have to be taken into account.

Symbolic crane figure



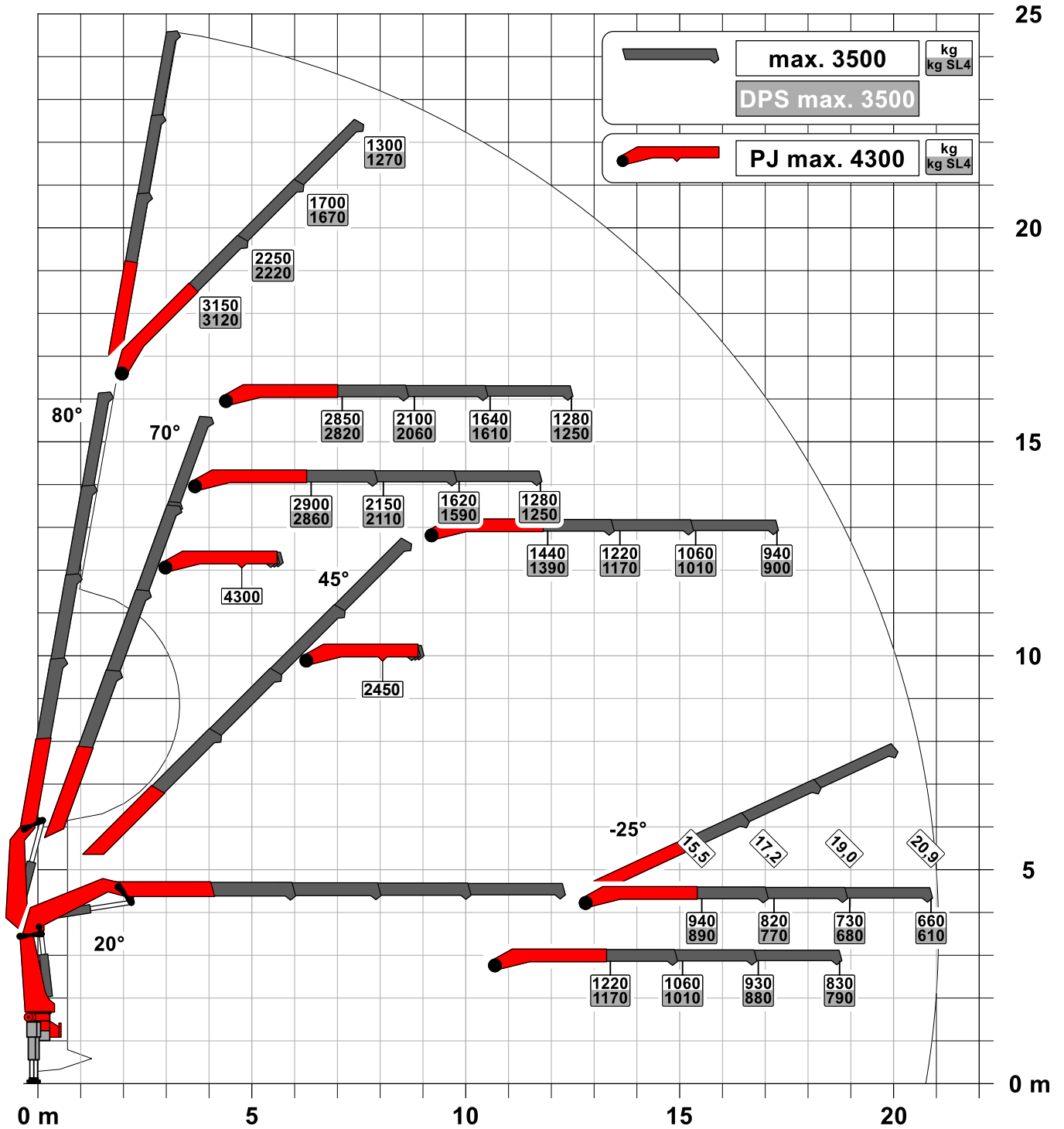
For Rope winch load capacity refer to page
Page 020.21000

Lifting capacity diagram PK 295 TEC C PJ090 B DPS-C

Subject to change, production tolerances have to be taken into account.

Symbolic crane figure

DPS-C
Dual Power System

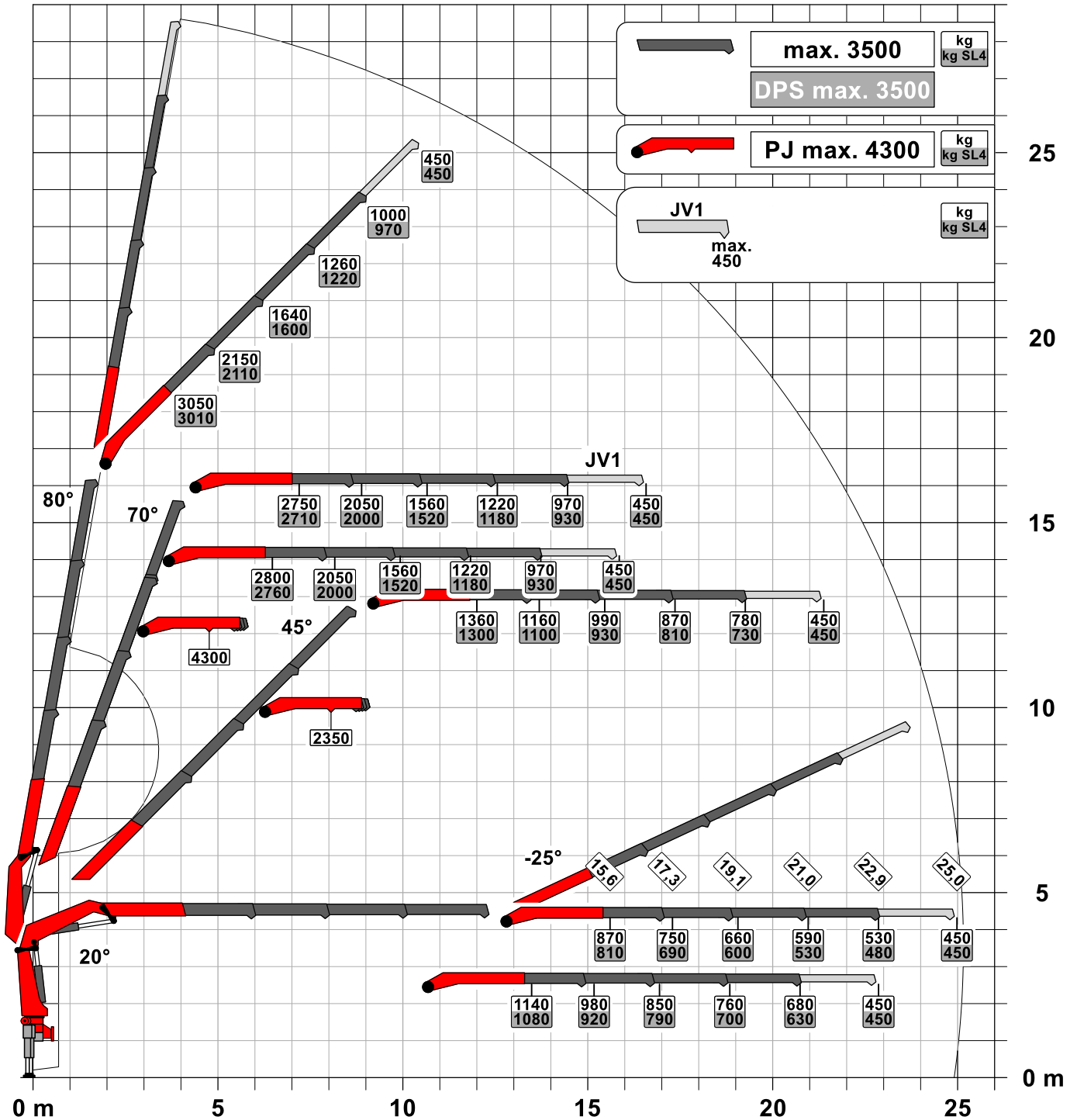


For Rope winch load capacity refer to page
Page 020.21000

Subject to change, production tolerances have to be taken into account.

Symbolic crane figure

DPS-C
Dual Power System



:Dead weight JV1
40 kg

When using mechanical boom extensions, the loads shown on the charts need to be reduced by the weight of these extensions.



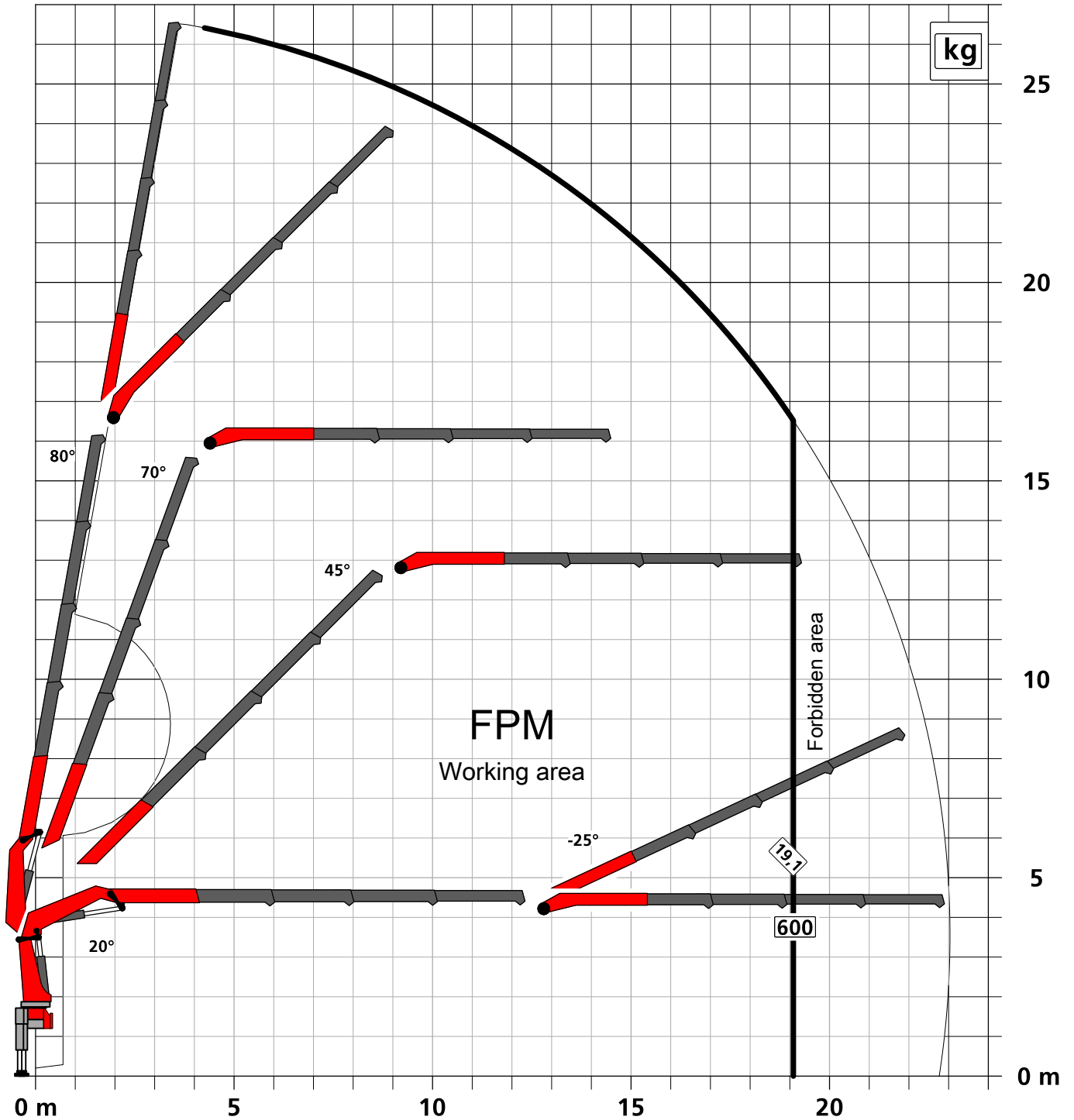
For Rope winch load capacity refer to page
Page 020.21000

Working area FPM PK 295 TEC C PJ090 C

Subject to change, production tolerances have to be taken into account.

Symbolic crane figure

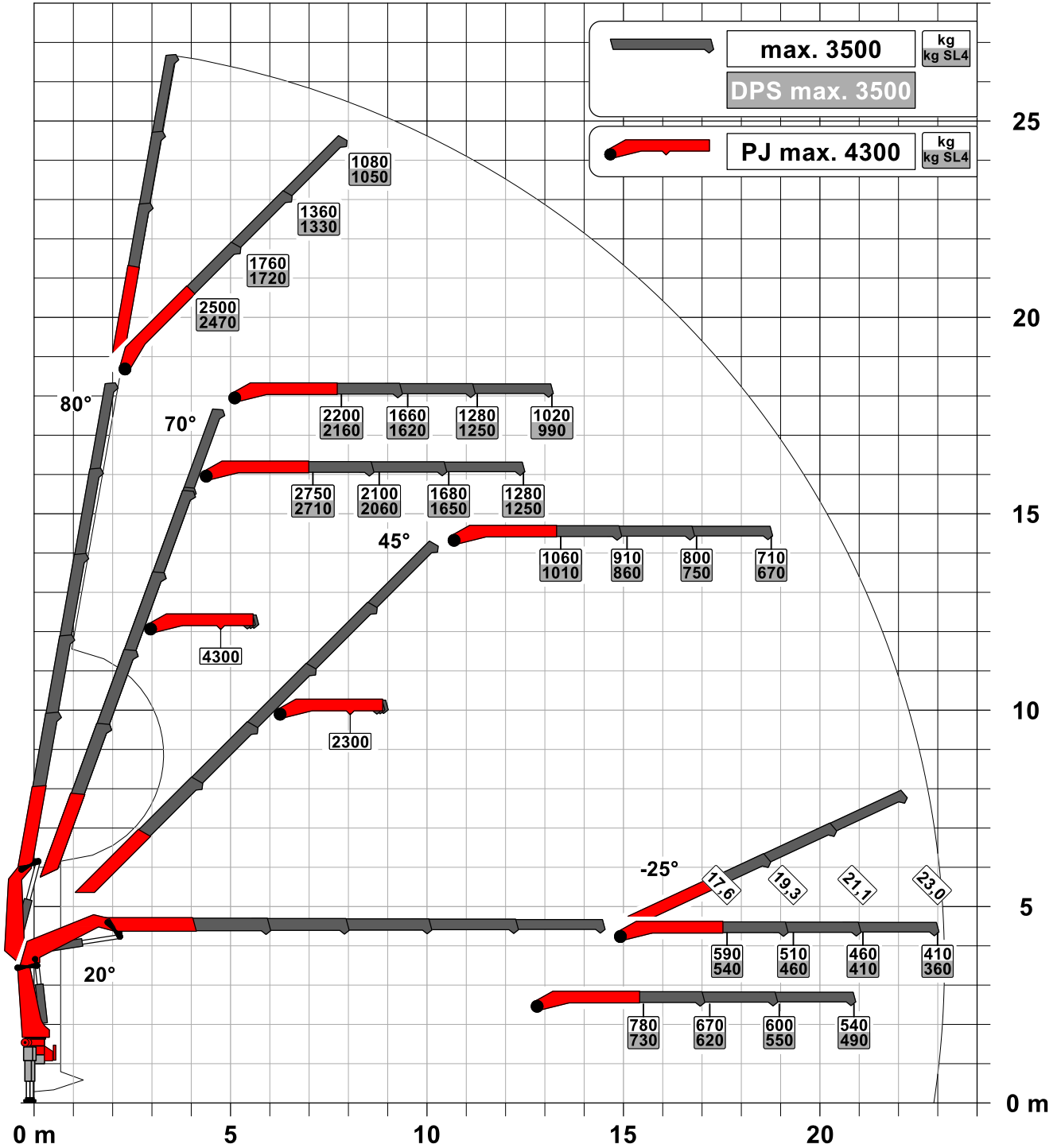
Personal fall protection mode FPM



Subject to change, production tolerances have to be taken into account.

Symbolic crane figure

DPS-C
Dual Power System

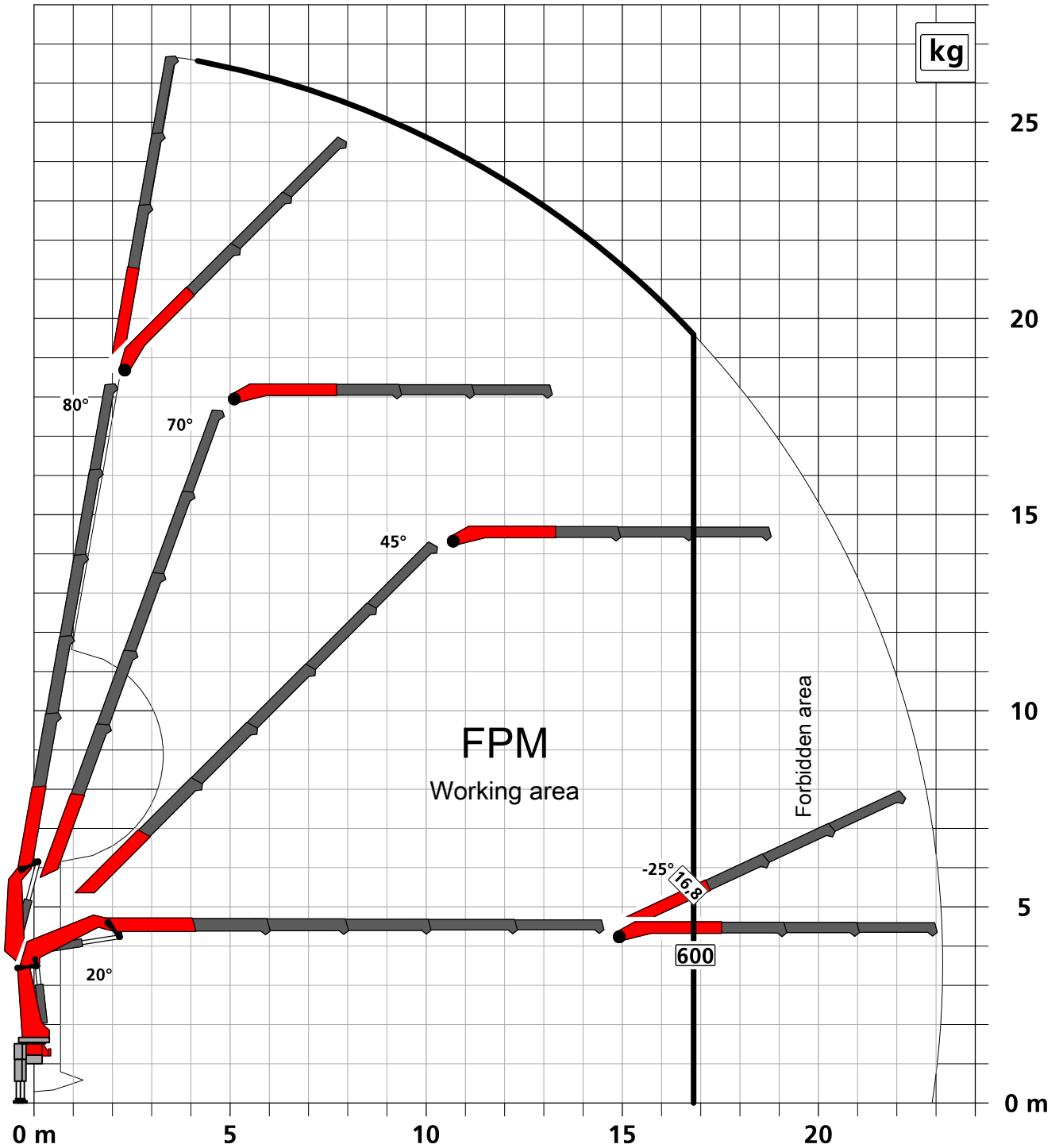


For Rope winch load capacity refer to page
Page 020.21000

Subject to change, production tolerances have to be taken into account.

Symbolic crane figure

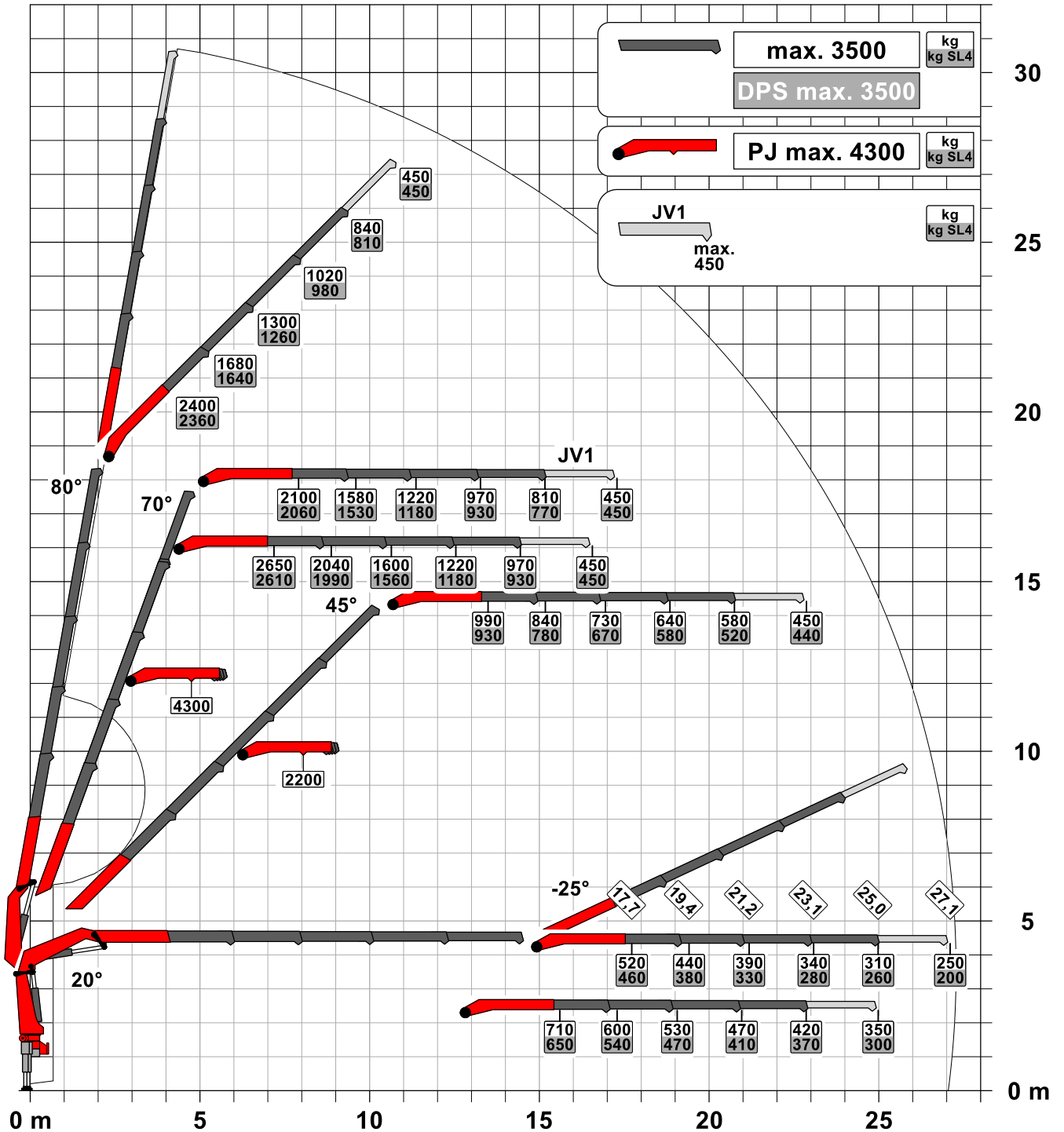
Personal fall protection mode FPM



Subject to change, production tolerances have to be taken into account.

Symbolic crane figure

DPS-C
Dual Power System



:Dead weight JV1
40 kg

When using mechanical boom extensions, the loads shown on the charts need to be reduced by the weight of these extensions.

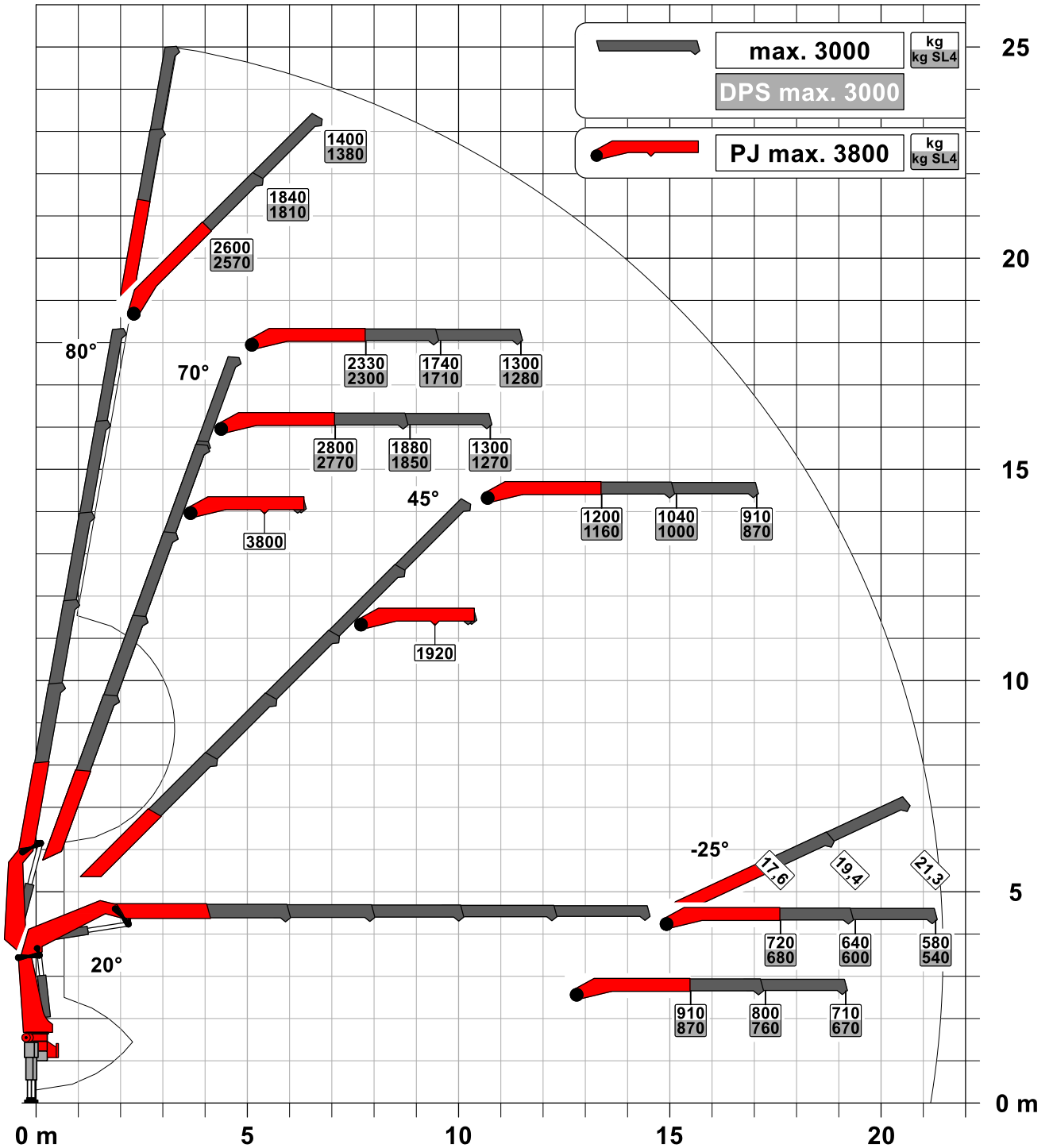
For Rope winch load capacity refer to page
Page 020.21000

Lifting capacity diagram PK 295 TEC D PJ075 A DPS-C

Subject to change, production tolerances have to be taken into account.

Symbolic crane figure

DPS-C
Dual Power System

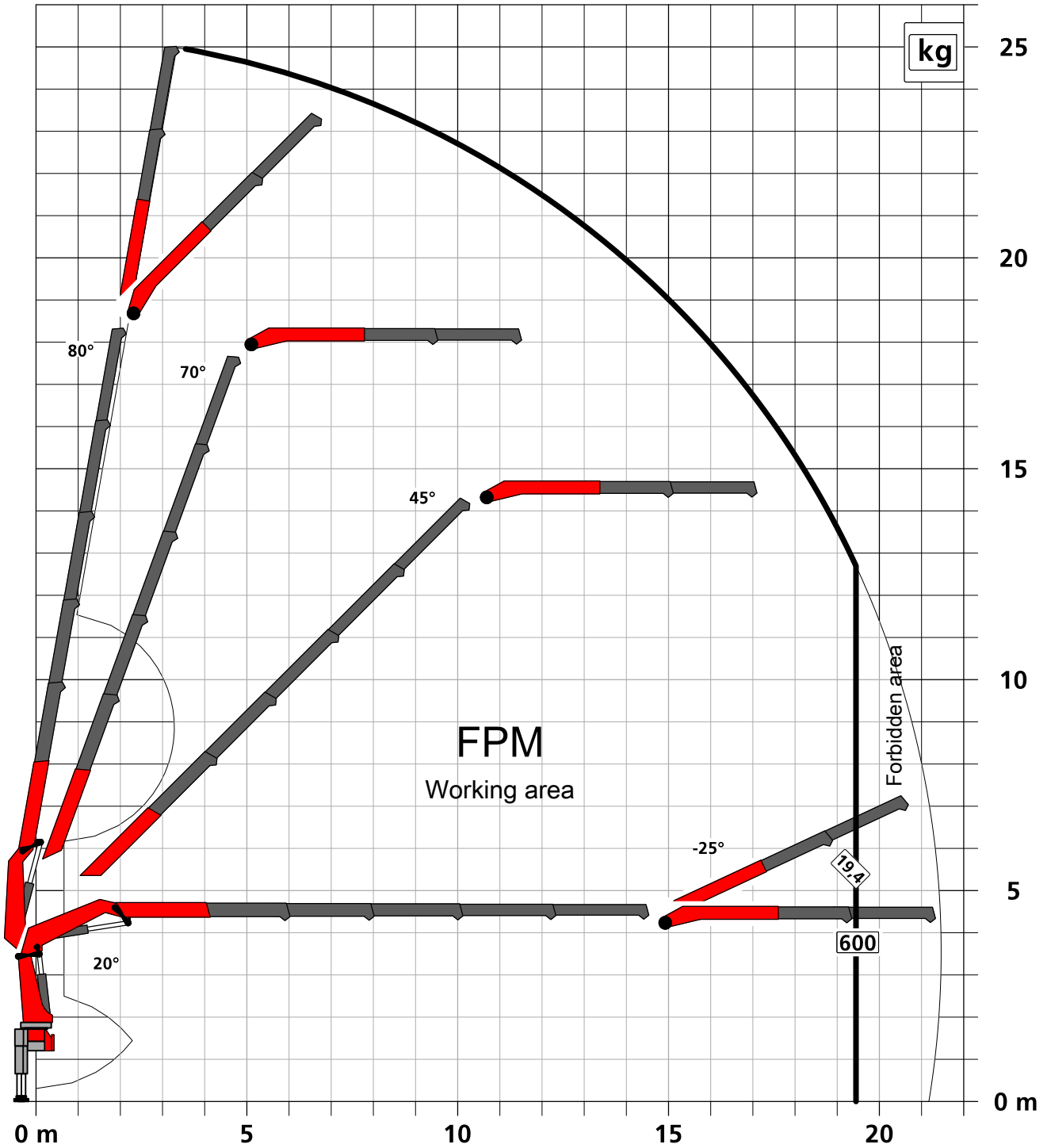


For Rope winch load capacity refer to page
Page 020.21000

Subject to change, production tolerances have to be taken into account.

Symbolic crane figure

Personal fall protection mode FPM

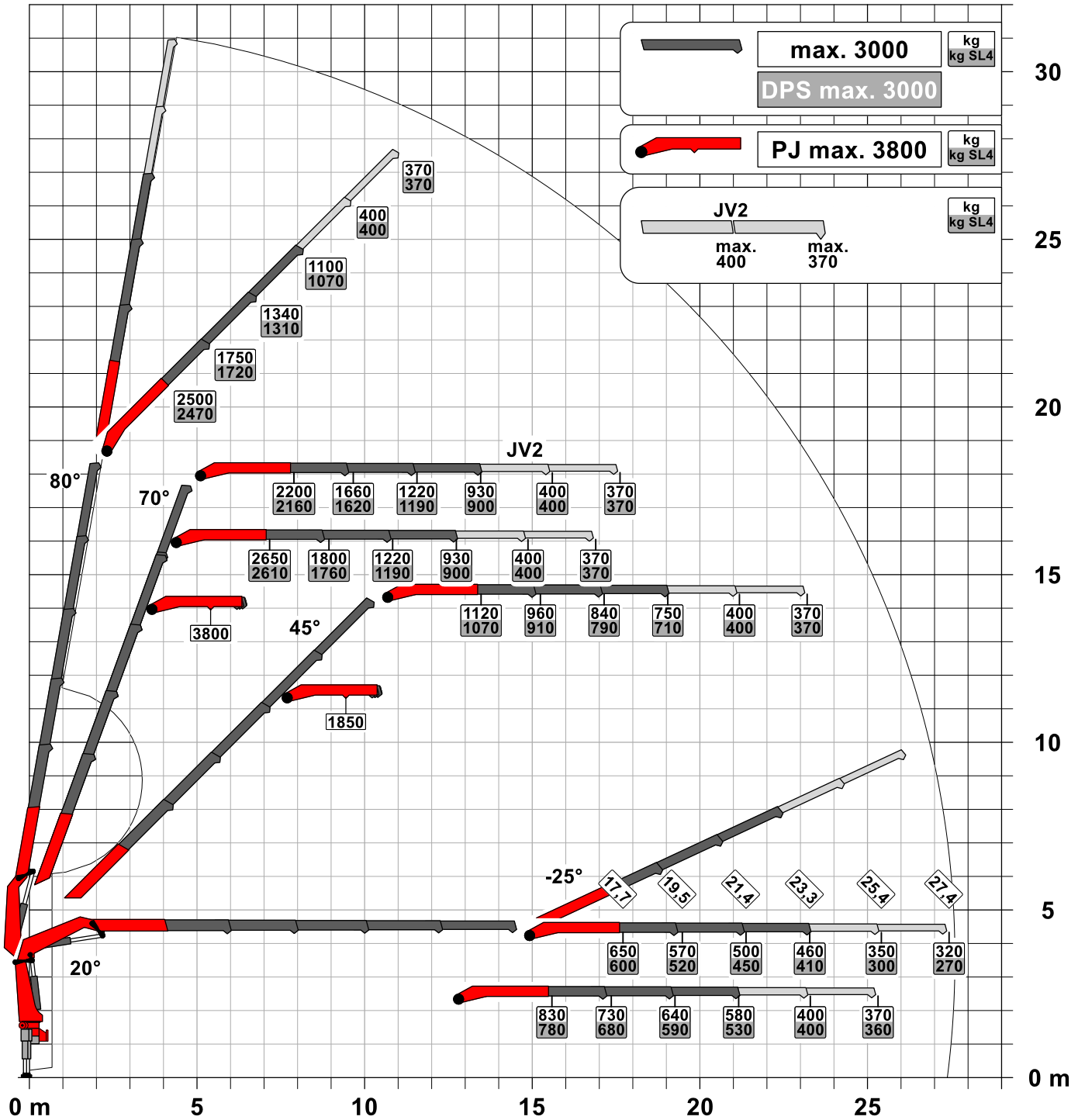


Lifting capacity diagram PK 295 TEC D PJ075 BJV2 DPS-C

Subject to change, production tolerances have to be taken into account.


Symbolic crane figure

DPS-C
Dual Power System



:Dead weight JV2
75 kg

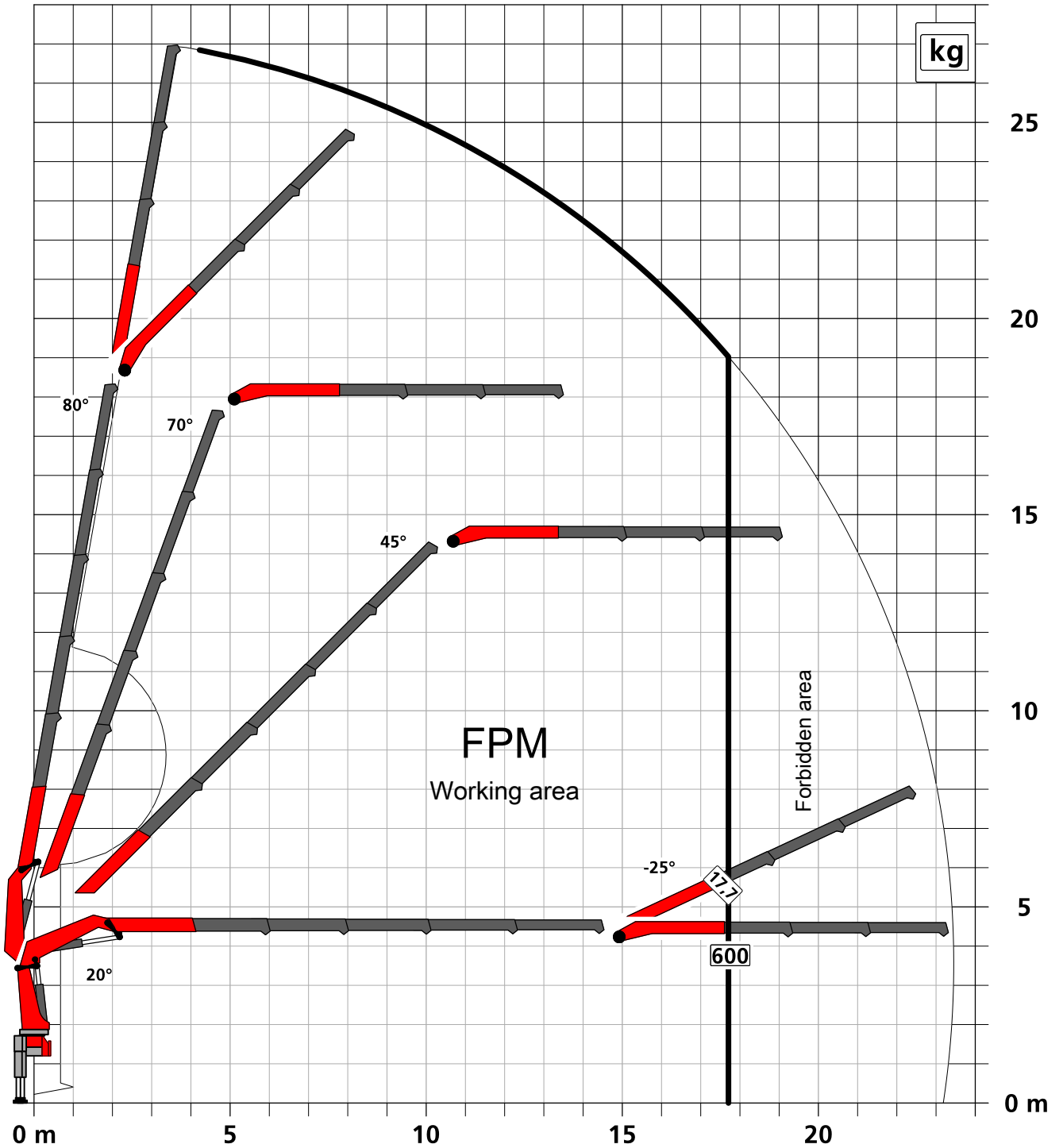
When using mechanical boom extensions, the loads shown on the charts need to be reduced by the weight of these extensions.

 For Rope winch load capacity refer to page
Page 020.21000

Subject to change, production tolerances have to be taken into account.

Symbolic crane figure

Personal fall protection mode FPM

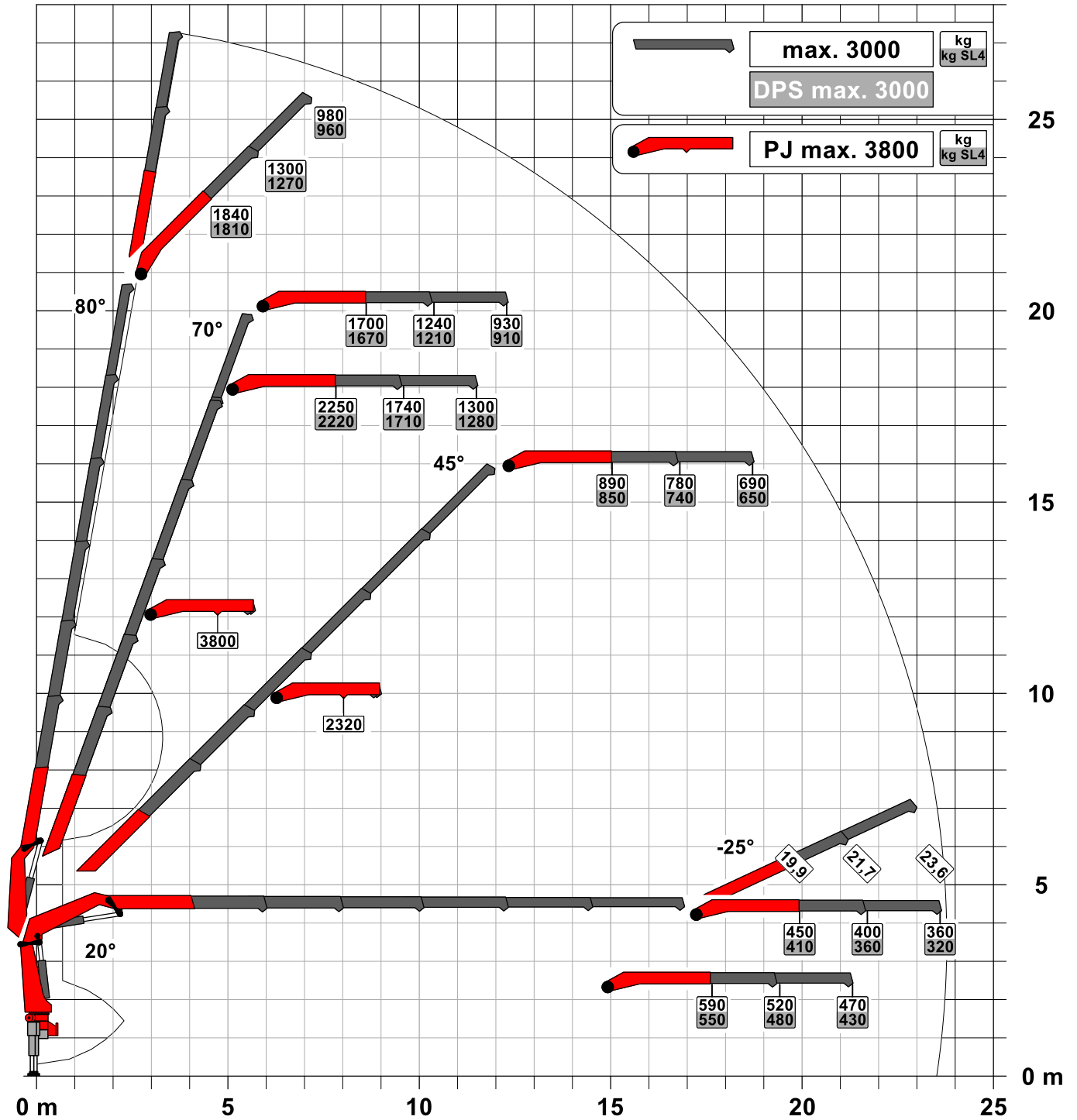


Lifting capacity diagram PK 295 TEC E PJ075 A DPS-C

Subject to change, production tolerances have to be taken into account.

Symbolic crane figure

DPS-C
Dual Power System

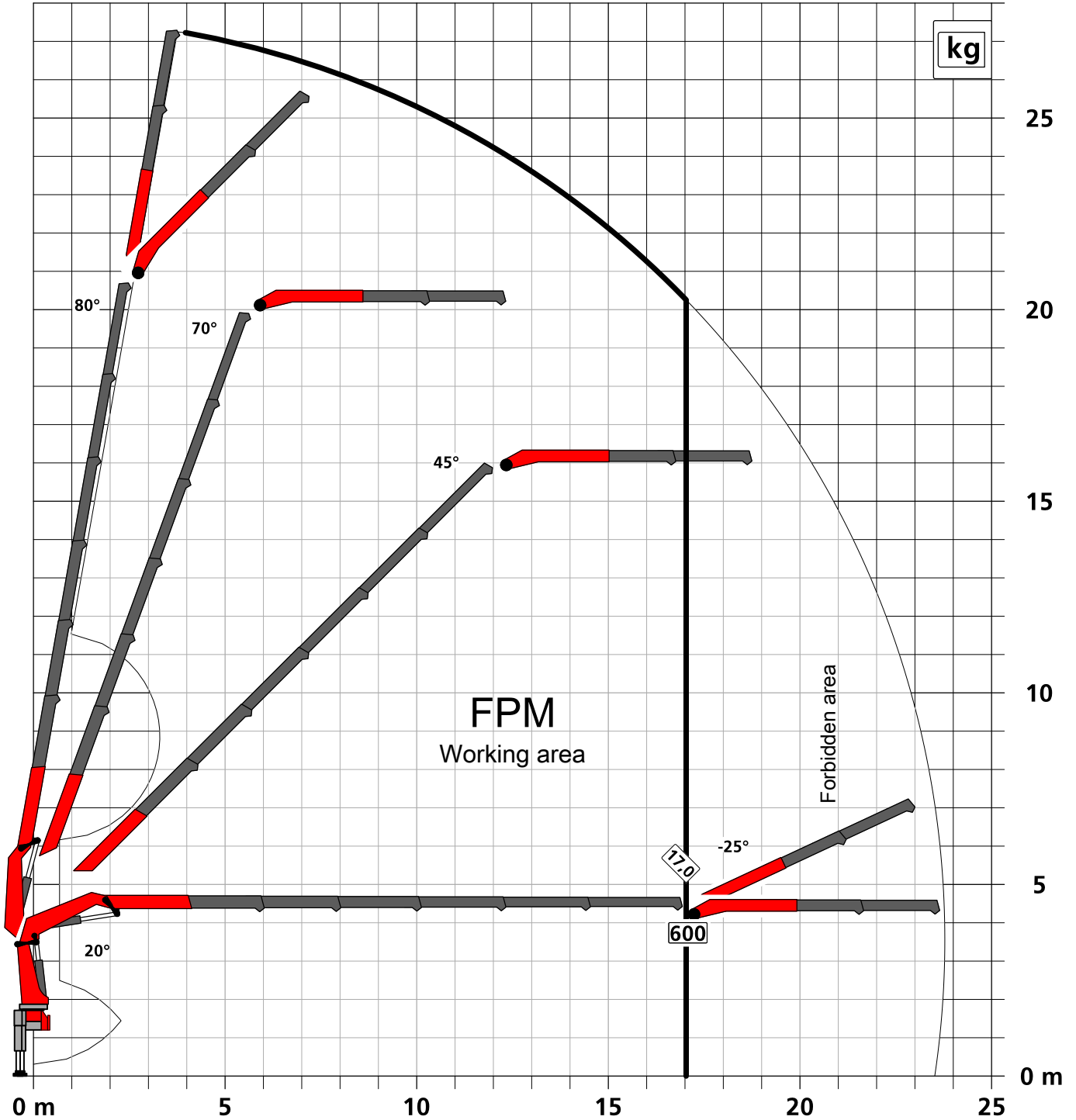


For Rope winch load capacity refer to page
Page 020.21000

Subject to change, production tolerances have to be taken into account.

Symbolic crane figure

Personal fall protection mode FPM

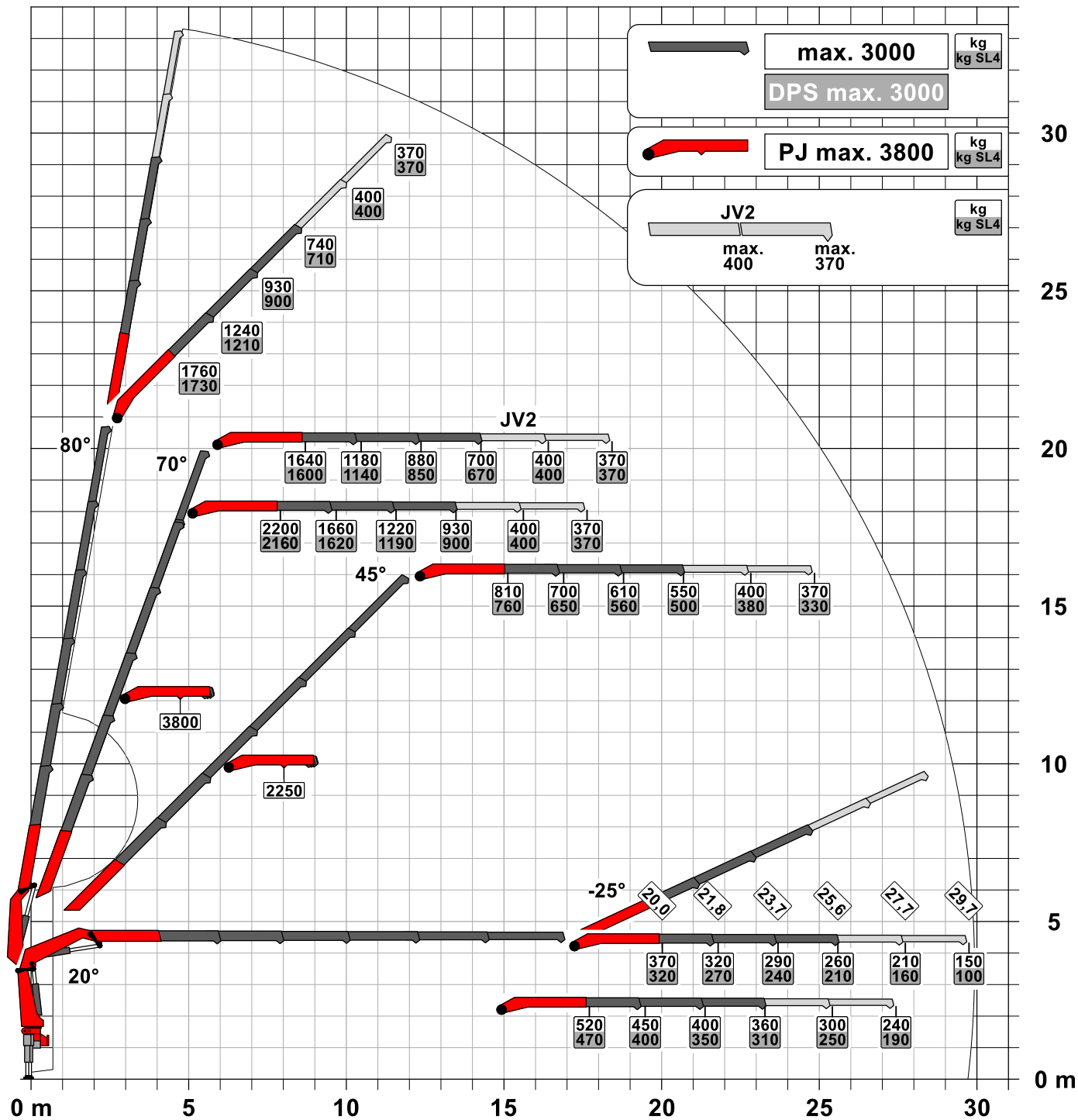


Lifting capacity diagram PK 295 TEC E PJ075 BJV2 DPS-C

Subject to change, production tolerances have to be taken into account.

Symbolic crane figure

DPS-C
Dual Power System



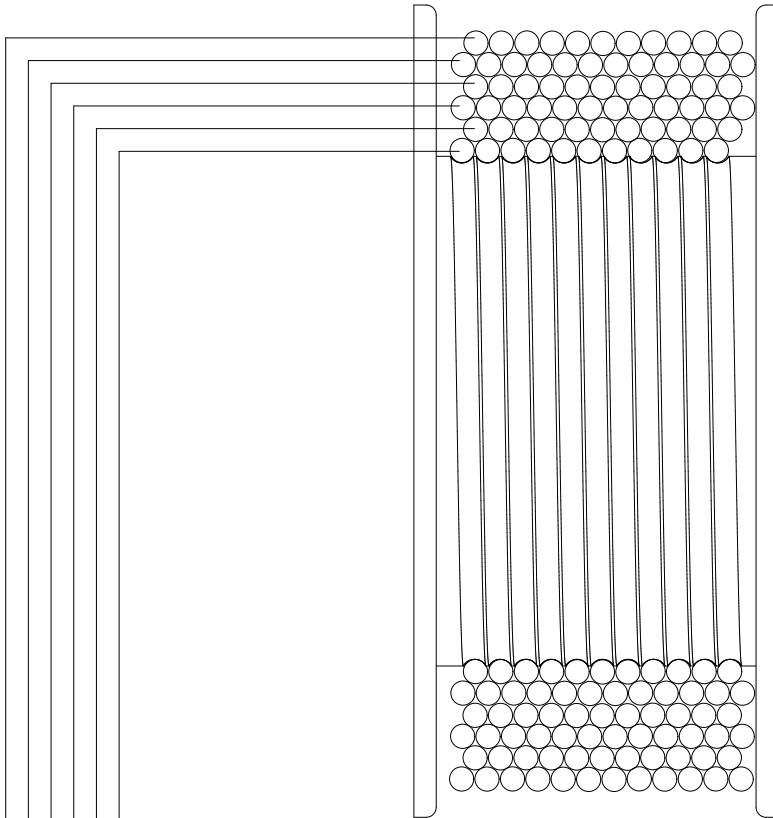
:Dead weight JV2
75 kg

When using mechanical boom extensions, the loads shown on the charts need to be reduced by the weight of these extensions.



For Rope winch load capacity refer to page
Page 020.21000

Subject to change, production tolerances have to be taken into account.



	Strands		Strands		Strands	
	1STRAN		2STRAN		4STRAN	
	Load capacity	Wire reception	Load capacity	Wire reception		
1	2500 kg [5,510 lb]	12 m [39' 4"]	5000 kg [11,020 lb]	12 m [39' 4"]	10000 kg [22,050 lb]	12 m [39' 4"]
2	2350 kg [5,180 lb]	24 m [78' 9"]	4700 kg [10,360 lb]	24 m [78' 9"]	9400 kg [20,720 lb]	24 m [78' 9"]
3	2210 kg [4,870 lb]	37,6 m [123' 4"]	4420 kg [9,740 lb]	37,6 m [123' 4"]	8840 kg [19,490 lb]	37,6 m [123' 4"]
4	2090 kg [4,610 lb]	51 m [167' 4"]	4180 kg [9,220 lb]	51 m [167' 4"]	8360 kg [18,430 lb]	51 m [167' 4"]
5	1980 kg [4,370 lb]	66,2 m [217' 2"]	3970 kg [8,750 lb]	66,2 m [217' 2"]	7920 kg [17,460 lb]	66,2 m [217' 2"]
6	1880 kg [4,150 lb]	81 m [265' 9"]	3760 kg [8,290 lb]	81 m [265' 9"]	7520 kg [16,580 lb]	81 m [265' 9"]

Weights of load handling devices are part of the load lifted and must be deducted from the capacity.
Weight of the load handling equipment must be deducted from the lifting capacity.

