

35S14

IVECO

P 220 AXE-E SMART PLUS

IVECO DAILY 35S14

NUOVO

DISPONIBILE

FOTO ESEMPLIFICATIVA

ON STOCK




SPECIFICHE

- Piattaforma aerea articolata con elevate prestazioni, installata su autocarro 3,5 t.
- La più compatta nella sua categoria.
- Comandi elettrici multifunzione (E) per una maggiore precisione, rapidità e comfort di manovra.
- Stabilizzazione verticale con traverse estendibili anteriormente per compensare meglio i dislivelli e le pendenze del terreno.
- Articolata semplice con elevato sbraccio laterale.
- Piattaforma con tre possibilità di stabilizzazione (PLUS) per ogni condizione di lavoro:
 - In sagoma: per la massima compattezza degli ingombri in spazi ridotti
 - Con traverse anteriori sfilate: per massime prestazioni di lavoro in quota
 - Stabilizzazione parziale: per prestazioni massime con minimo ingombro.

STANDARD

INFORMAZIONI OFFERTA

Dettagli sulla posizione

Modena, 41122 - Italia 

Dettagli dealer

Palfinger srl

Disponibilità

Disponibile

Tipologia di prodotto

Nuovo

Email del venditore

info@palfingerplatformsitaly.it

v.dalcamo@palfinger.com

Telefono del venditore

0039059252426

35S14

- Anticollisione cabina /braccio
- Cestello rotante idraulicamente 90°dx + 90°sx
- Contatore elettrico (cruscotto autocarro)
- Cuffia protezione bocca-sfilo
- Inclinometro con allarme sonoro e luminoso su condizioni di lavoro aereo
- Linea aria/acqua dalla colonna al cesto
- Piastre ripartitrici allargate con relativi alloggi sul pianale
- Predisposizione per l'isolamento
- Presa 12v sul cesto
- Presa elettrica 230 V / 16 A or 110V/ 16A nel cestello
- Serbatoio diesel 40 lt
- Verniciatura in cataforesi, sistema KTL brevettato PALFINGER
- Visualizzatore centraggio parte aerea per chiusura macchina

Verificare configurazione macchina disponibile.

35S14

| | | | |
|-------------------------------|------------------------|---------------------------|----------------------|
| Produttore | PALFINGER | Rotazione torre | 370° |
| Modello | P 200 AXE-E Smart Plus | Dimensioni cesto | 1.4 x 0.84 x h 1.1 m |
| Sbraccio | 13,00 m | Capacità di carico | 250 kg |
| Altezza Max. di Lavoro | 21,9 | Rotazione cesto | 90+90 |
| | | Materiale cesto | alu |
| Produttore | IVECO | Assi | 4x2 |
| Emissioni | EURO 6 E | PTT | 3500 Kg |

P 220 AXE-E SMART PLUS

**ARTICULATED PLATFORM
WITH UNBEATABLE
OUTREACH. IDEAL FOR
WORKING BEYOND
OVERHEAD OBSTACLES.**

LIFETIME EXCELLENCE



STRENGTHS

- High-performance articulated aerial platform installed on 3.5 t truck.
- The most compact design in its class.
- Multifunction electric controls (E) for more precise, faster, more convenient manoeuvring.
- Vertical stabilisation with front-end extending outriggers for better compensation of uneven or sloping ground.
- Single articulated boom system with high lateral outreach .
- Platform with three stabilisation options (PLUS) to cover all working conditions:
 - Within the outer vehicle limits: for maximum compactness overall within small spaces.
 - With front crossmembers extended: for maximum performance when working in elevated positions.
 - Partial stabilisation: for maximum performance with minimum overall dimensions.

STANDARD

- 12V socket on basket
- 230 V/16 socket A or 110V/16A 12V socket on basket
- 40 l diesel tank
- Aerial section centring display for aerial part closing
- Air/water line from the column to the basket
- Anti-collision system cab/boom
- Cage rotation 90°+ 90°
- Hour meter
- Inclinator with audio alarm signal and signal lights relating to aerial work conditions
- Painting with cathodolysis process, with KTL system patented by PALFINGER
- Preparation for insulation upgrade ability
- Top boom protection
- 4 spreader plates with proper housing on the chassis





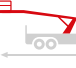



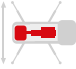



MAIN ACCESSORIES

- 12V electric pump for emergency lowering
- 230V/16A or 110V/16A electric pump with quick couplings
- Automatic aerial section closure
- Fiberglass basket instead of the standard aluminum version
- 1000 V insulation on fiberglass basket
- Fixed rotary lamp on turret
- Folding left and right-side bordering, h 200 mm
- Plastic storage toolbox at the rear
- Protective brushes for arm extension
- Side protection
- Wired remote control for emergency commands
- Street collision protection

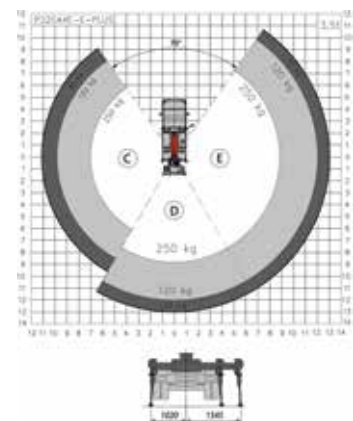
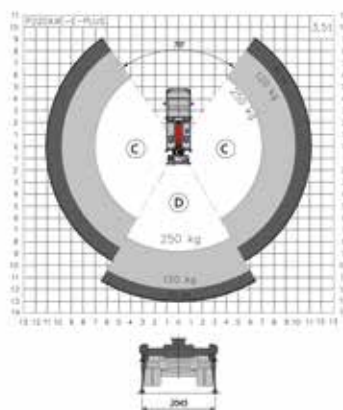
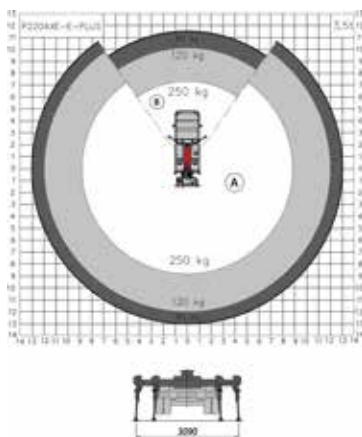
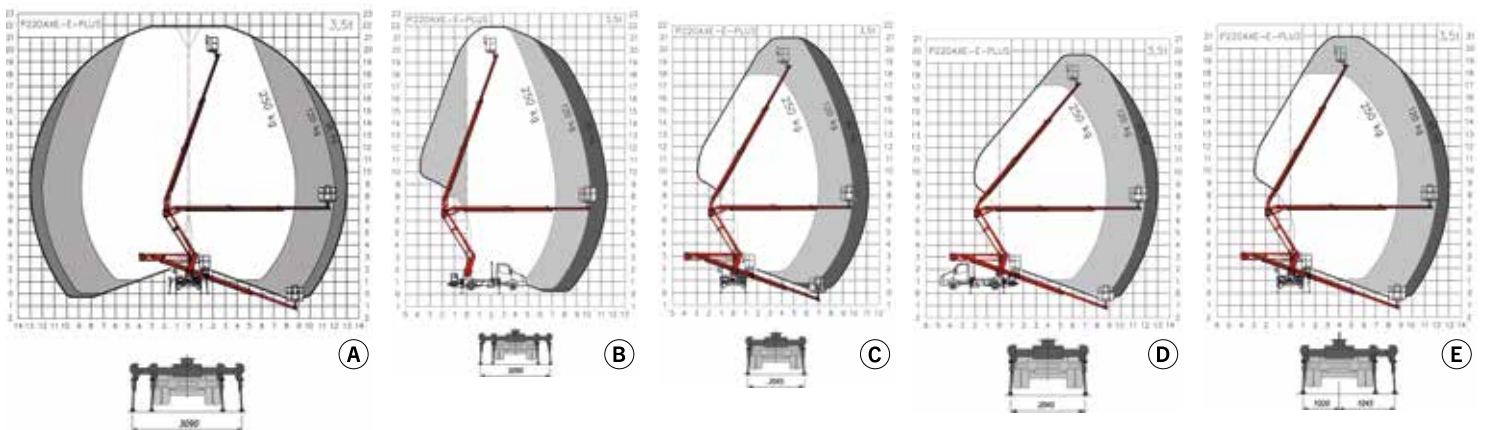
DIMENSIONS



TECHNICAL DATA

| | | | | | |
|--|--|-----------|---|--|--|
|  | Max. working height | 21,9 m |  | Basket rotation | 2x90° |
|  | Max. working height from platform deck | 19,9 m |  | Basket dimensions | m 1,4 x 0,84 x 1,1 h |
|  | Max. working outreach | 13,0 m |  | Maximum load capacity people + equipment | 250 kg - 230 kg VTR |
|  | Min. outrigger width | 2,1 m |  | Stabilization | Vertical, with front arms extendable hydraulically |
|  | Max. outrigger width | 3,1 m |  | Gross vehicle weight | 3,5 t |
|  | Operating angle main boom | -20°/+70° | | | |
|  | Turret rotation | 370° | | | |

WORK AREA



Weights may vary by +/- 5%
 Technical data may vary by +/- 3%
 *230 kg for FBG basket

CONTACT DETAILS**PALFINGER PLATFORMS ITALY SRL**

Via Enrico De Nicola, 31
41122 Modena (MO) - Italy
TEL: +39 059 252426
EMAIL: info@palfingerplatformsitaly.it

KP-P220AXEPM1+EN

The illustrations in the brochure may show units equipped with optional accessories and not always the standard version. National legislation must be complied with during construction/assembly. The dimensions stated are not binding. The company cannot be held responsible for any changes in technical information, inaccuracies, or translation errors.