

MERCEDES

P 250 BK

SPRINTER 315 CDI

CONTRACT NUMBER: 21339

RENTAL UNIT

ON REQUEST




SPECIFICATION

Minimum rental period 3 months

Price on request

OFFER INFORMATION

Location details

Krefeld, 47809 - Germany 

Dealer Name

PALFINGER Platforms GmbH

Availability

On request

Product type

Rental Unit

Contract number

21339

Contact person

Georg Plesker

Dealer E-mail

g.plesker@palfinger.com

Dealer phone

00491622119055

PRODUCT

Manufacturer	PALFINGER	Basket size	1,4 x 0,7 x 1,1 m
Model	P 250 BK	Basket capacity	250 kg
Construction year	2023	Basket turning device	+/- 90°
Outreach	17,1 m	Basket arm angle	185°
Max. height of work	24,7 m	Basket material	Alu
Turret rotation	500°		

TRUCK

Truck manufacturer	Mercedes Benz	Power	150 PS
Vehicle type	Sprinter 315 CDI	Emmission standard	Euro 6e
Construction year	2023	Axes	4x2
Drivers cabine	S	Gross vehicle weight	3.500 kg
Wheel base	3665 mm		

Working diagrams

Palfinger P 250BK

on

MB Sprinter 3,5t / Iveco Daily 35S

The working diagrams shown below have the following preconditions:

Solid line:

Standard working diagram

Working height = height of basket bottom + 2.0 m

The basket is in basic position (not turned) and retracted

The following applies generally:

All specifications refer to standard aluminum basket without additional equipment

Maximum inclination 0,5°

Set-up inclination is max. 5° with automatic range adjustment.

Note on working diagram:

Additional attachments that deviate from the standard reduce range and basket load

Special baskets have different ranges

Reach at plastic workman basket ~ 0,5m - 0,8m reduced

Permitted maximum basket load according to technical description

The outreaches are approximate dimensions and depend on the chassis, the type of support and the lifting platform's additional equipment.

Illustrations of truck and unit are only of symbolic nature and do not allow any conclusions regarding technical design.

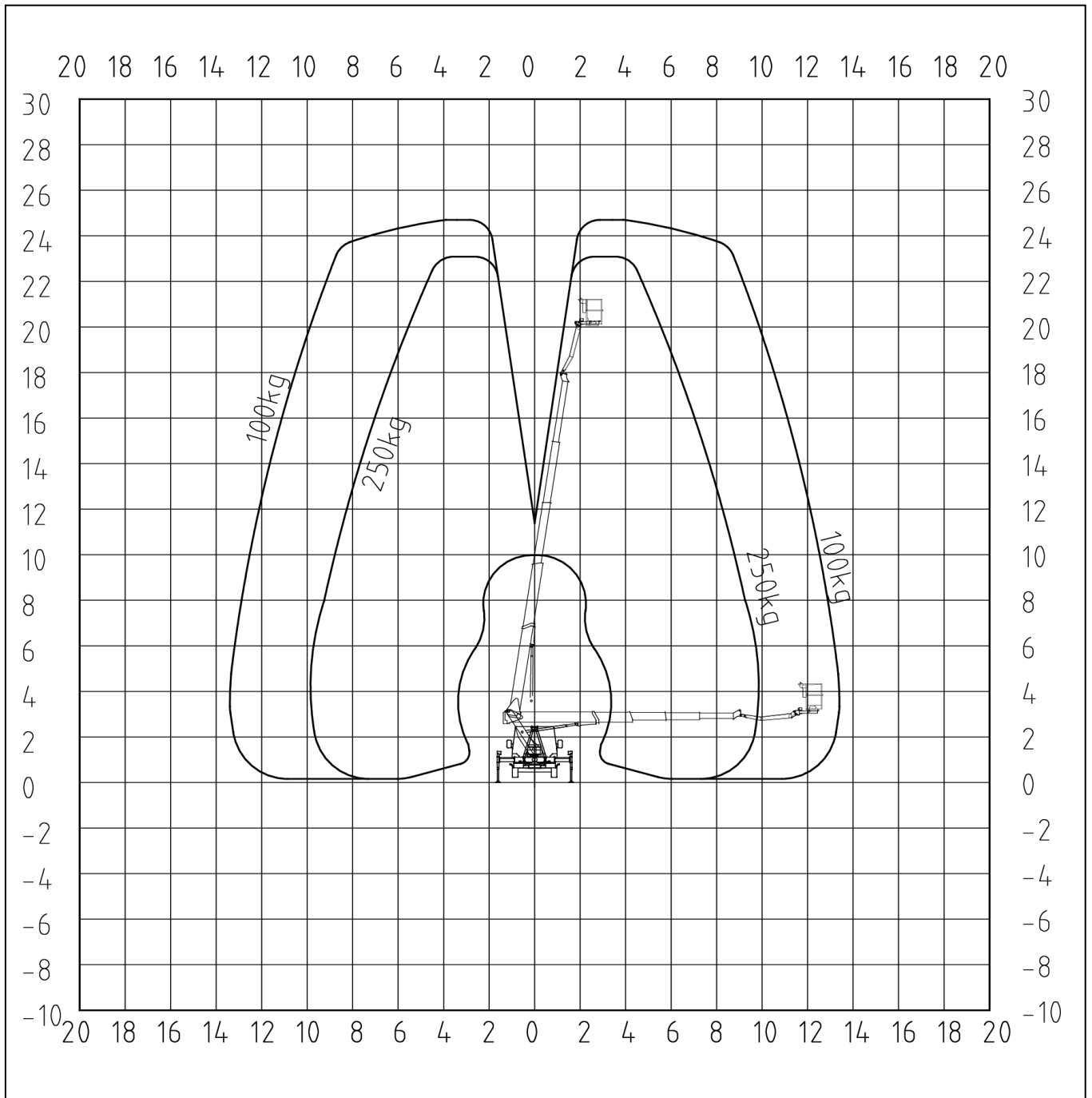
Subject to technical change!

Palfinger P 250BK

Rear view

Extension of stabiliser
outrigger

Front left	100%
Front right	100%
Rear left	100%
Rear right	100%

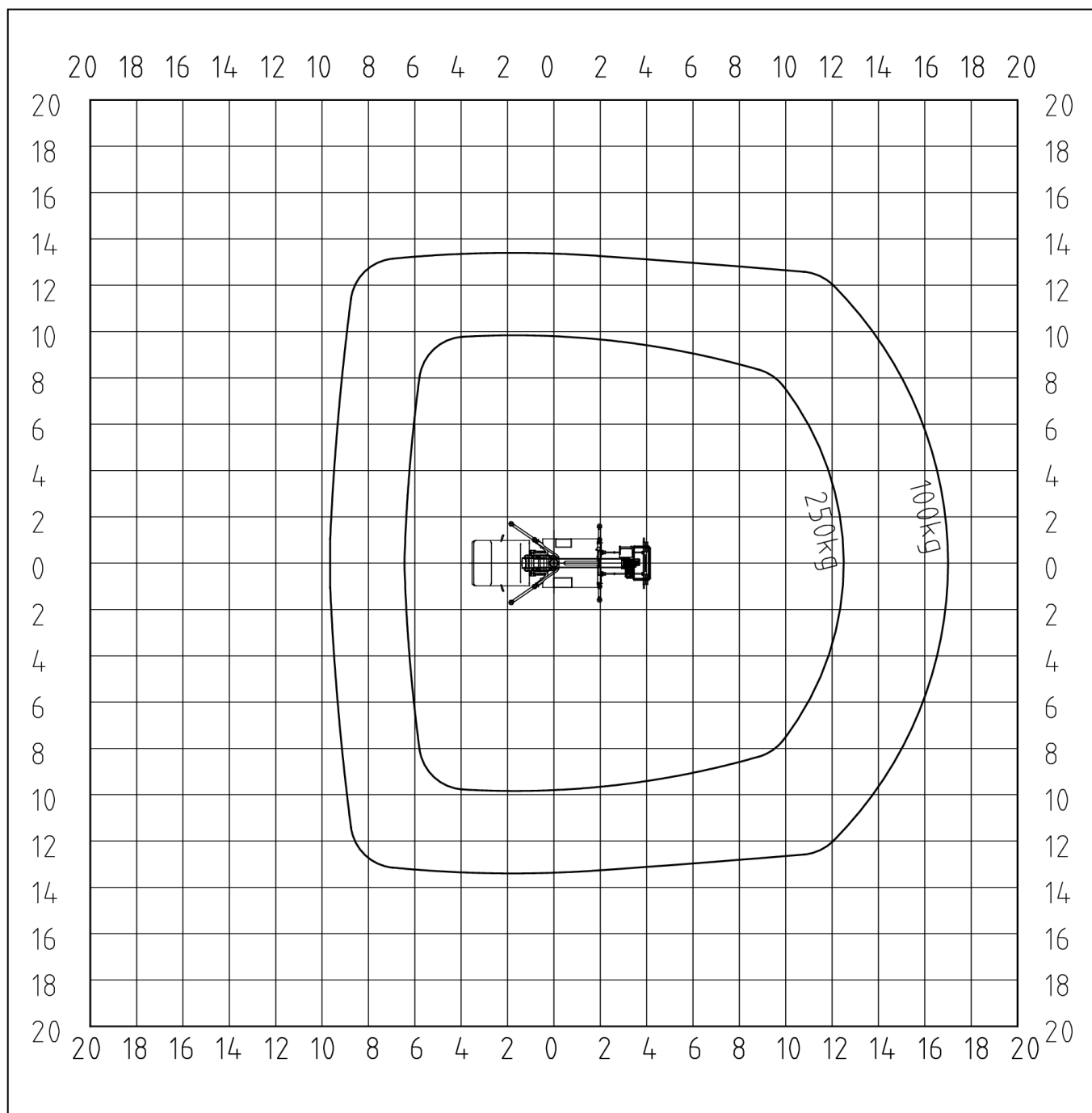


Palfinger P 250BK

Top view

Extension of stabiliser
outrigger

Front left	100%
Front right	100%
Rear left	100%
Rear right	100%

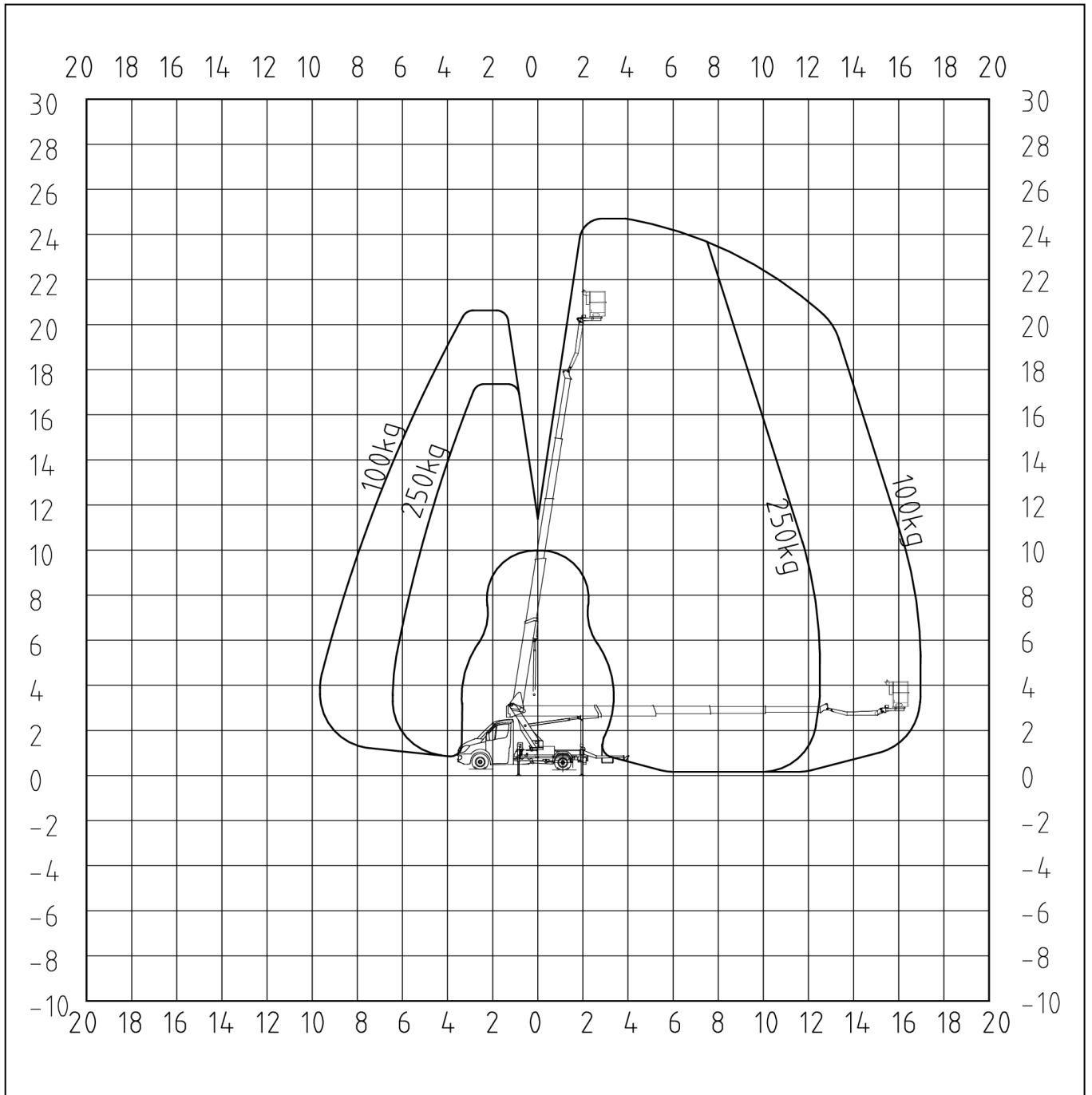


Palfinger P 250BK

Left view

Extension of stabiliser
outrigger

Front left	100%
Front right	100%
Rear left	100%
Rear right	100%

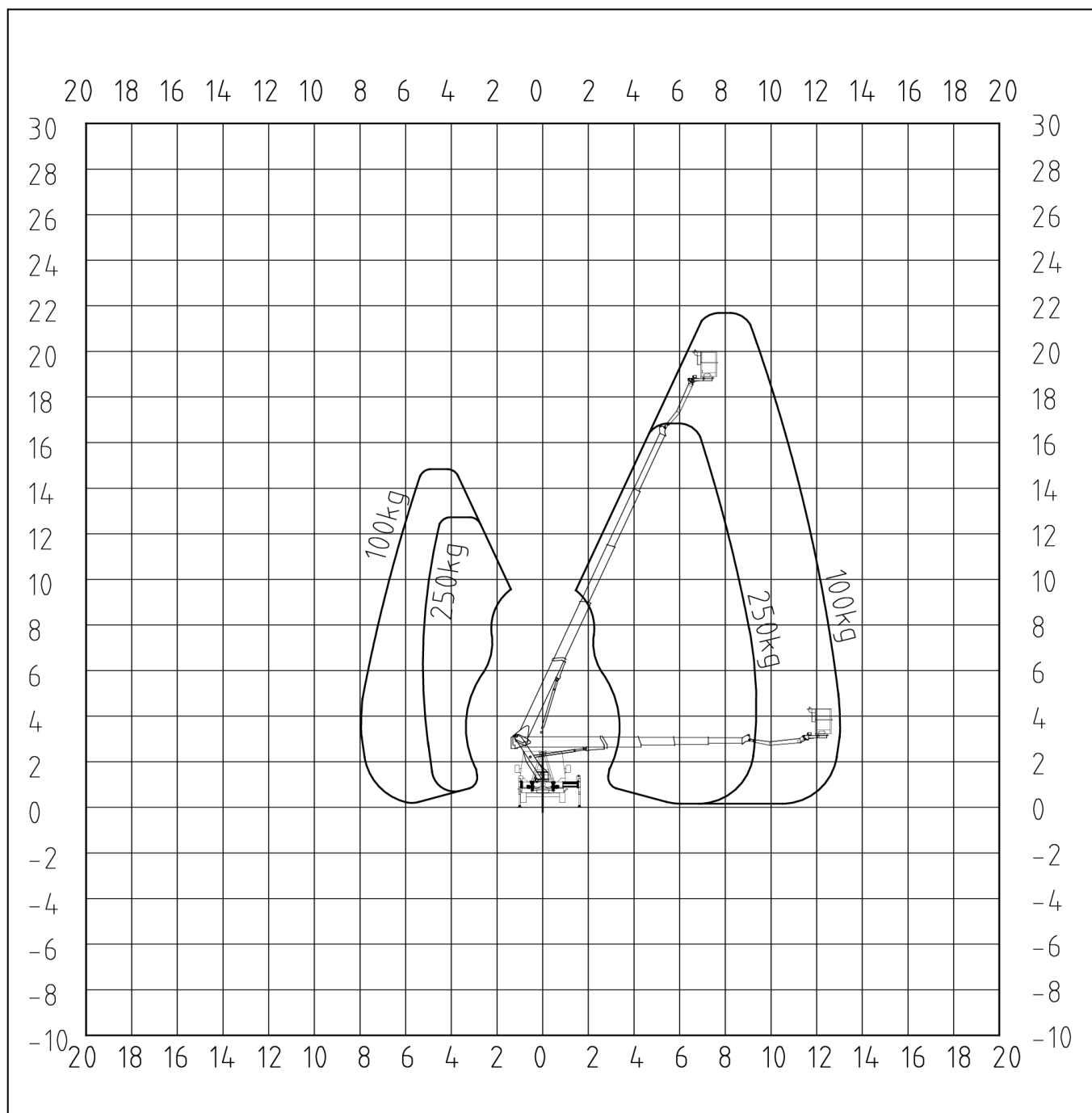


Palfinger P 250BK

Rear view

Extension of stabiliser
outrigger

Front left	0%
Front right	100%
Rear left	0%
Rear right	100%

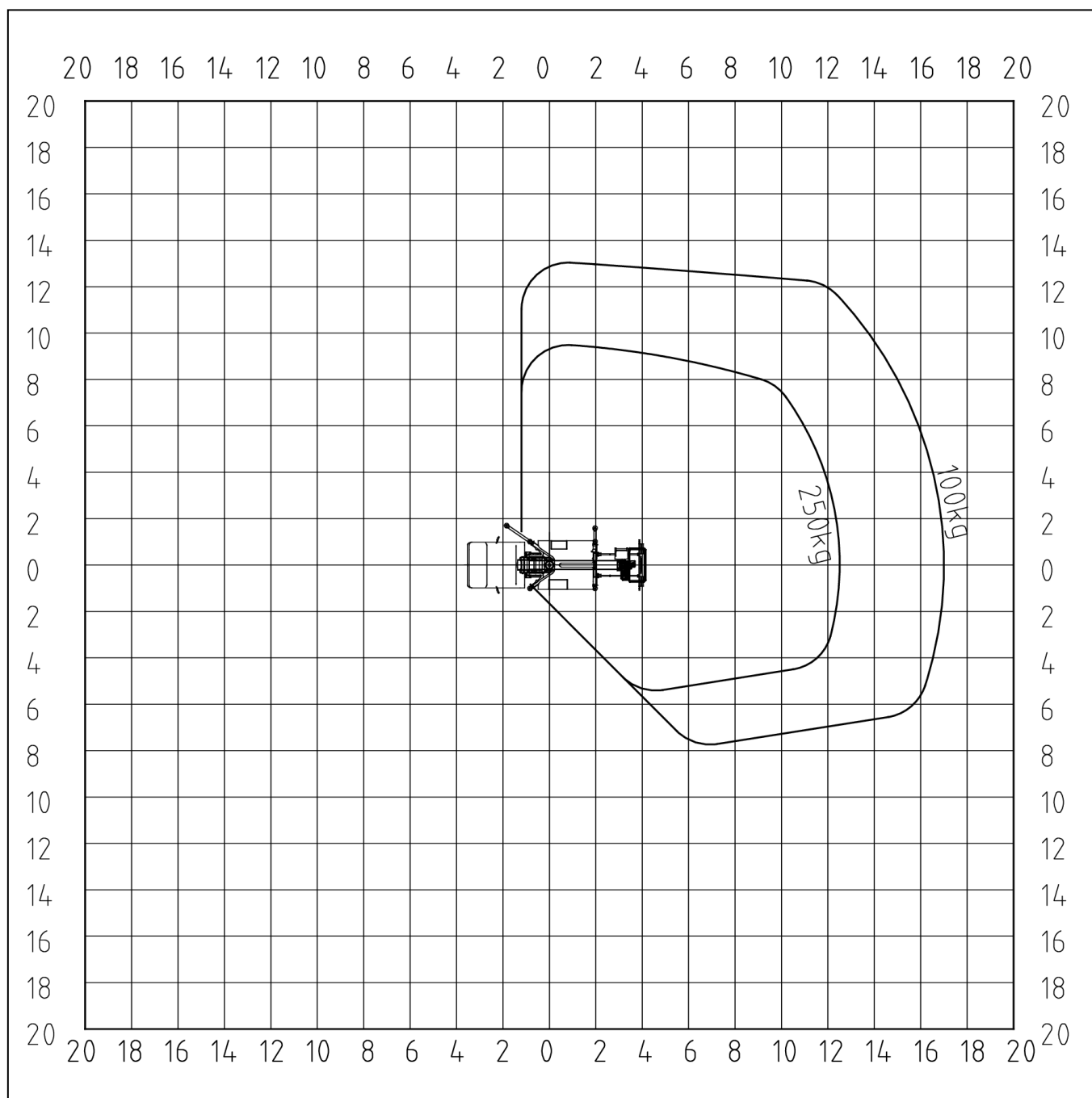


Palfinger P 250BK

Top view

Extension of stabiliser
outrigger

Front left	0%
Front right	100%
Rear left	0%
Rear right	100%

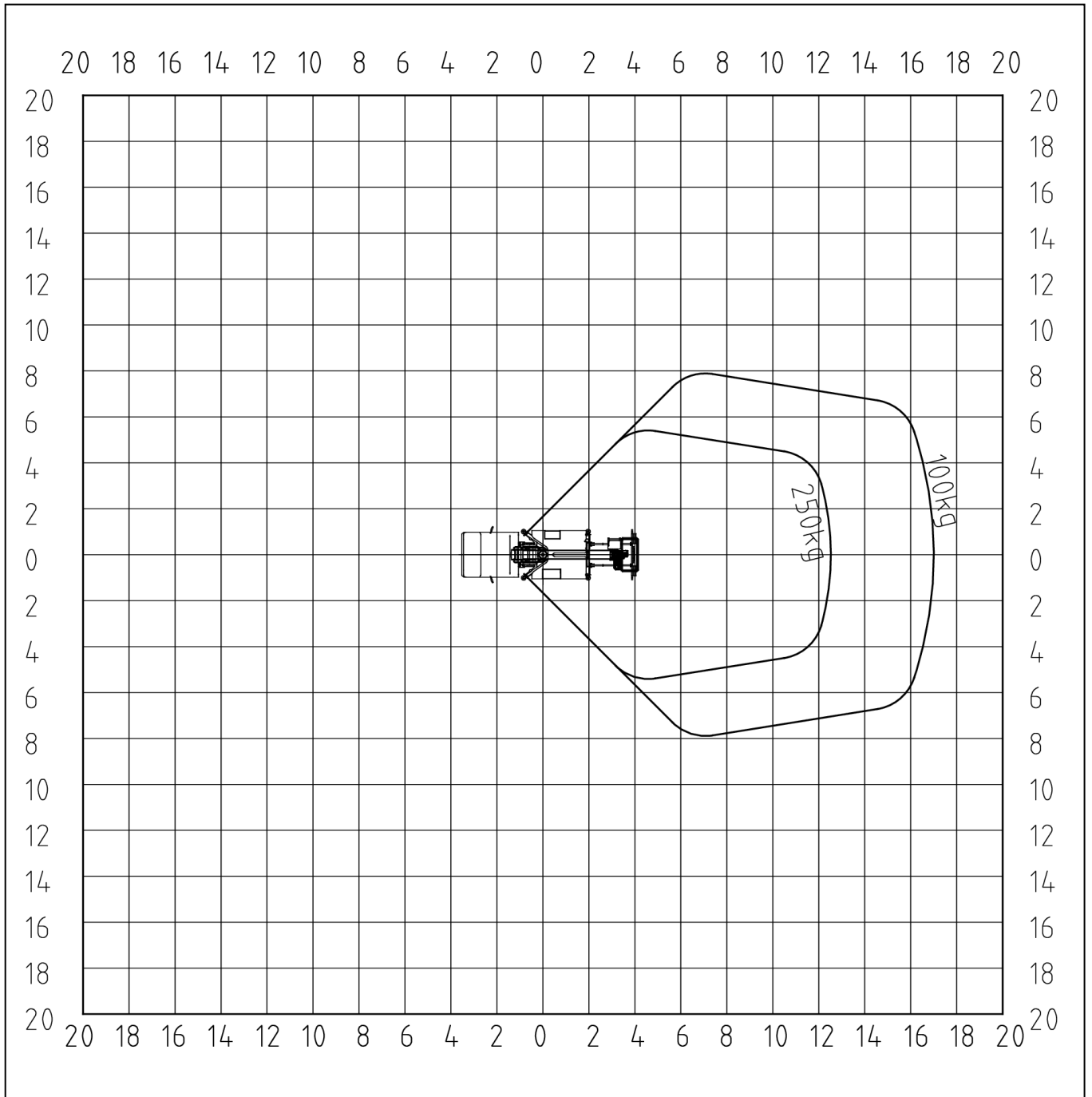


Palfinger P 250BK

Top view

Extension of stabiliser
outrigger

Front left	0%
Front right	0%
Rear left	0%
Rear right	0%

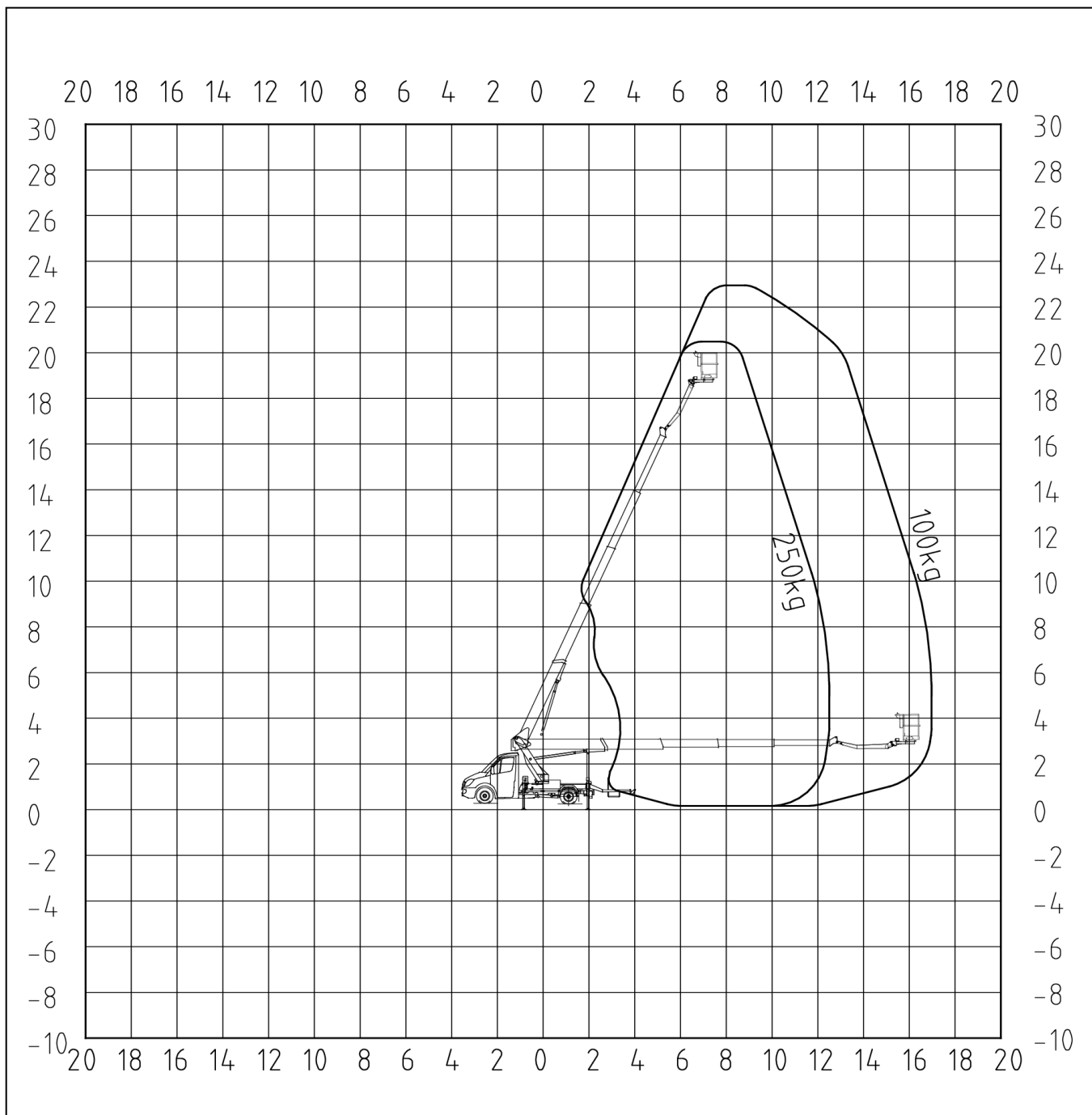


Palfinger P 250BK

Left view

Extension of stabiliser
outrigger

Front left	0%
Front right	100%
Rear left	0%
Rear right	100%

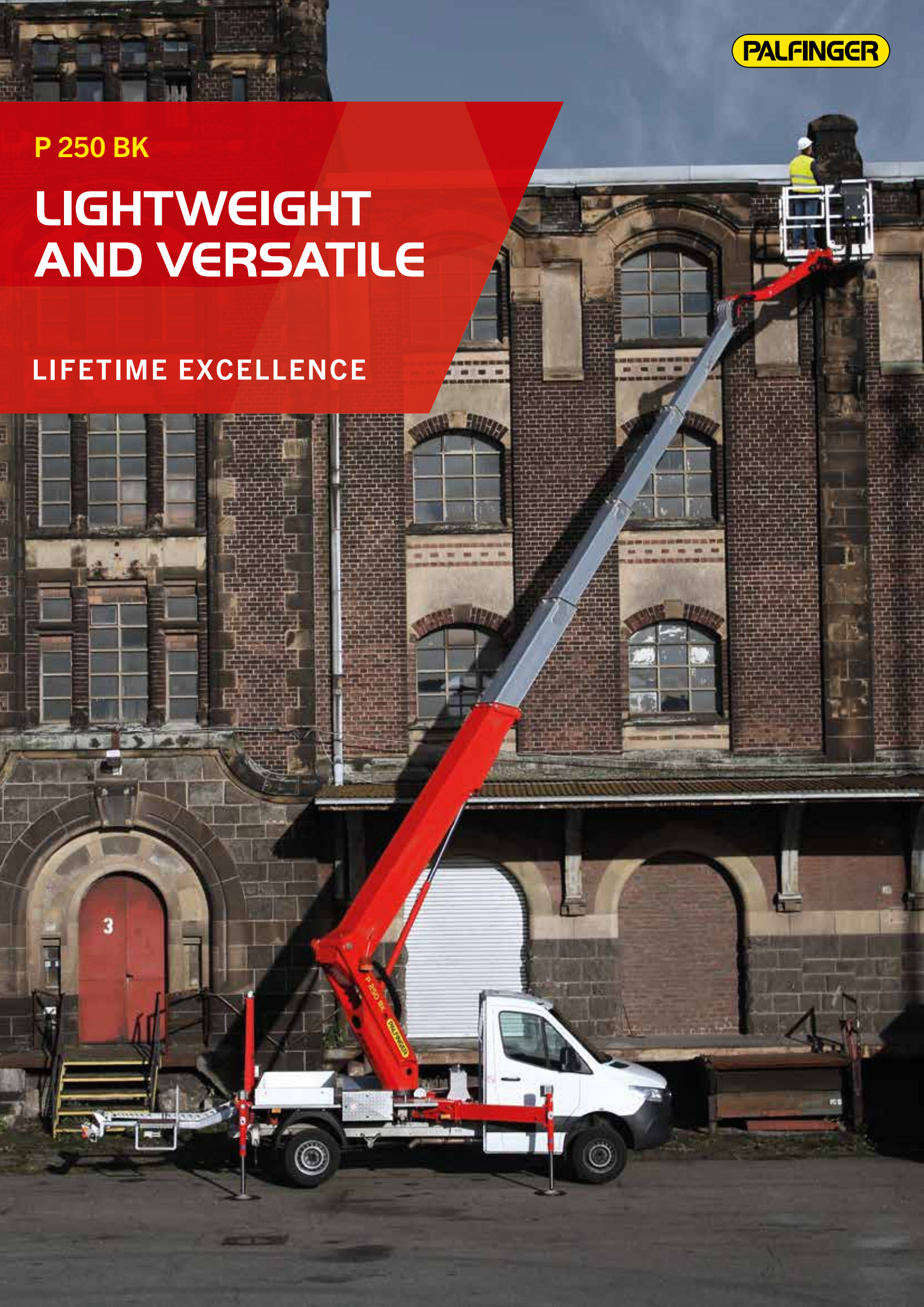


PALFINGER

P 250 BK

**LIGHTWEIGHT
AND VERSATILE**

LIFETIME EXCELLENCE



HIGHLIGHTS

- Outrigger control panel located at the rear end for a safe operation. All outriggers are visible from this position.
- The control panel in the cage enables a safe and efficient operation of the platform
- Even with a cage load of 250kg the full working height can be reached.
- Three stabiliser configurations: in contour, fully extended and one side extended only as well as the automatic adjustment of the corresponding working envelope
- Flat substructure under the cage allows users to get close to objects

STANDARDS


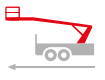

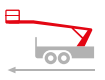

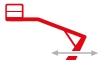








- Home function
- Automated positioning system
- 4 Safety plates
- 230V CEE current supply with CEE socket in the workman basket
- European type approval
- Stabilizer control at basis

OPTIONS

- Tree cutting package (tool tray inside the cage, bracket for chainsaw, dividing screen, wooden frame, working lights and illumination of surrounding area)
- Attachment point for load securing nets
- Bracket inclusive 7 traffic cones
- Cable remote control to connect at the base
- Display in addition to the control panel
- Insulation package in combination with aluminum cage

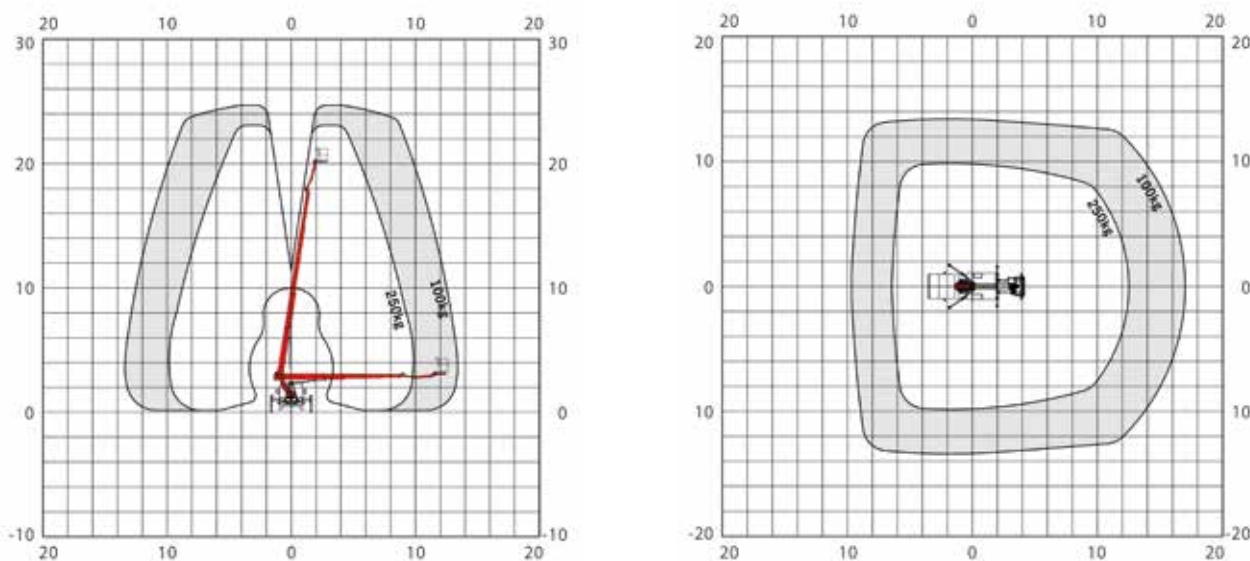


TECHNICAL SPECIFICATIONS

	Total weight *	3390 kg		max. outreach to the side	13.3 m
	Overall length	7.71 m		max. outreach	16.9 m
	Total width	2.22 m		Angle of main boom	500°
	Travelling height	2.99 m		Rotation angle of cage	2 x 90°
	Wheelbase	3665 mm		Rotation angle of cage boom	185°
	max. working height	24.7 m		Size of cage	1.40 x 0.70 x 1.10 m
	max. cage bottom height	22.7 m		max. cage load	250 kg

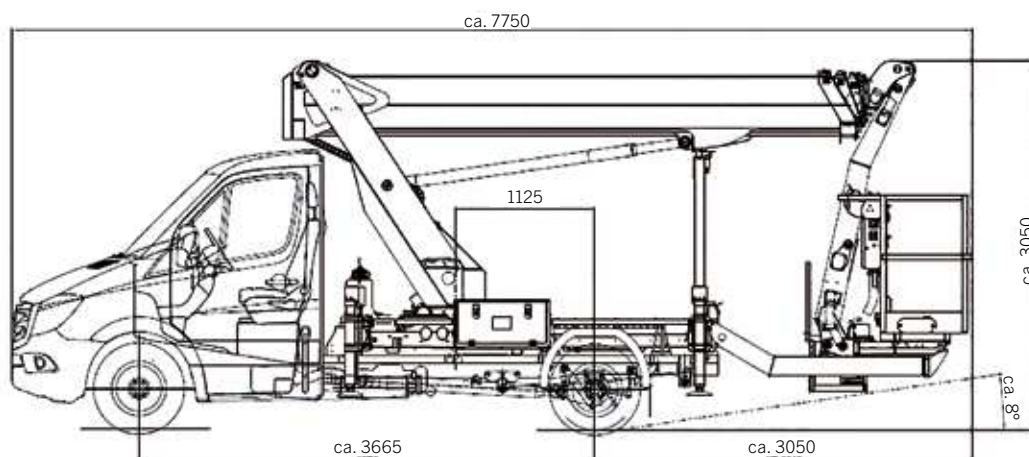
* Depends on truck chassis

WORKING DIAGRAMS



* A possible 2% tolerance is contingent on structural components

DIMENSIONS



YOUR CONTACT

Palfinger Platforms GmbH
Düsseldorfer Str. 100
47809 Krefeld | Germany

KP-P250BKM3+EN

Units shown in the leaflet are partially optional equipped and do not always correspond to the standard version. Country-specific regulations must be observed. Dimensions may vary. Subject to technical changes, errors and translation mistakes.