

P 220 AXE-E Smart Plus Iveco IVECO DAILY 35S14



IVECO

P 220 AXE-E SMART PLUS IVECO DAILY 35S14

NEW

AVAILABLE

SYMBOLFOTO

ON STOCK



SPECIFICATION

- High-performance articulated aerial platform installed on 3.5 t truck.

STANDARD


- 12V socket on basket
- 230 V/16 socket A or 110V/16A 12V socket on basket
- Aerial section centring display for aerial part closing
- Air/water line from the column to the basket
- Anti-collision system cab/boom
- Cage rotation 90°+ 90°
- Painting with cataphoresis process, with KTL system patented by PALFINGER
- Preparation for insulation upgrade ability
- Top boom protection
- 4 spreader plates with proper housing on the chassis

CONFIGURATION:

Prior sale and changes reserved!

OFFER INFORMATION

Location details

Modena, 41122 - Italy 

Dealer Name

Palfinger srl

Availability

Available

Product type

New

Dealer E-mail

info@palfingerplatformsitaly.it

v.dalcamo@palfinger.com

Dealer phone

0039059252426

Print date: Jul 12, 2025, 8:01:28 AM

35S14

-
- Aluminium Cage
 - Home function
 - Full configuration truck
 - boom color: white RAL 9016
 -

Please, verify the configuration with sales office.



P 220 AXE-E Smart Plus Iveco IVECO DAILY
35S14

PRODUCT

Manufacturer	PALFINGER	Turret rotation	370°
Model	P 200 AXE-E Smart Plus	Basket size	1.4 x 0.84 x h 1.1 m
Outreach	13,00 m	Basket capacity	250 kg
Max. height of work	21,9	Basket turning device	90+90
		Basket material	alu

TRUCK

Truck manufacturer	IVECO	Axes	4x2
Emmission standard	EURO 6 E	Gross vehicle weight	3500 Kg

PALFINGER

P 220 AXE-E SMART PLUS

**ARTICULATED PLATFORM
WITH UNBEATABLE
OUTREACH. IDEAL FOR
WORKING BEYOND
OVERHEAD OBSTACLES.**

LIFETIME EXCELLENCE



STRENGTHS

- High-performance articulated aerial platform installed on 3.5 t truck.
- The most compact design in its class.
- Multifunction electric controls (E) for more precise, faster, more convenient manoeuvring.
- Vertical stabilisation with front-end extending outriggers for better compensation of uneven or sloping ground.
- Single articulated boom system with high lateral outreach.
- Platform with three stabilisation options (PLUS) to cover all working conditions:
 - Within the outer vehicle limits: for maximum compactness overall within small spaces.
 - With front crossmembers extended: for maximum performance when working in elevated positions.
 - Partial stabilisation: for maximum performance with minimum overall dimensions.

STANDARD

- 12V socket on basket
- 230 V/16 socket A or 110V/16A 12V socket on basket
- 40 l diesel tank
- Aerial section centring display for aerial part closing
- Air/water line from the column to the basket
- Anti-collision system cab/boom
- Cage rotation 90°+ 90°
- Hour meter
- Inclinator with audio alarm signal and signal lights relating to aerial work conditions
- Painting with cataphoresis process, with KTL system patented by PALFINGER
- Preparation for insulation upgrade ability
- Top boom protection
- 4 spreader plates with proper housing on the chassis





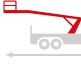







MAIN ACCESSORIES

- 12V electric pump for emergency lowering
- 230V/16A or 110V/16A electric pump with quick couplings
- Automatic aerial section closure
- Fiberglass basket instead of the standard aluminum version
- 1000 V insulation on fiberglass basket
- Fixed rotary lamp on turret
- Folding left and right-side bordering, h 200 mm
- Plastic storage toolbox at the rear
- Protective brushes for arm extension
- Side protection
- Wired remote control for emergency commands
- Street collision protection

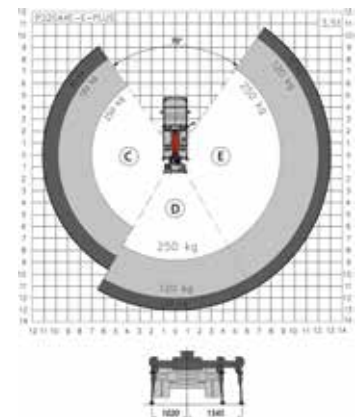
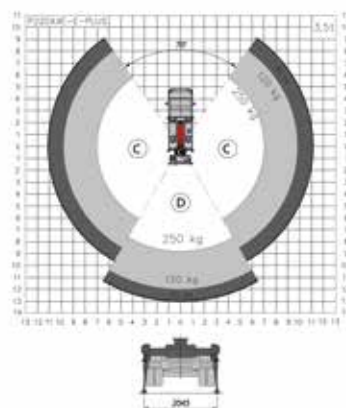
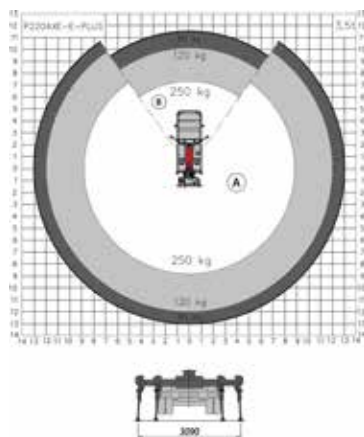
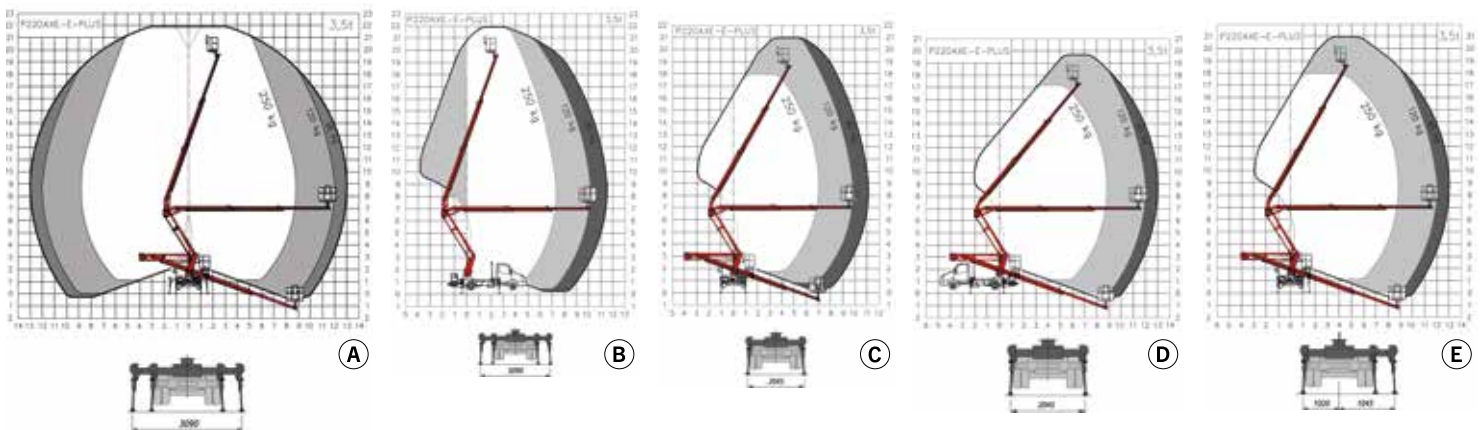
DIMENSIONS



TECHNICAL DATA

	Max. working height	21,9 m		Basket rotation	2x90°
	Max. working height from platform deck	19,9 m		Basket dimensions	m 1,4 x 0,84 x 1,1 h
	Max. working outreach	13,0 m		Maximum load capacity people + equipment	250 kg - 230 kg VTR
	Min. outrigger width	2,1 m		Stabilization	Vertical, with front arms extendable hydraulically
	Max. outrigger width	3,1 m		Gross vehicle weight	3,5 t
	Operating angle main boom	-20°/+70°			
	Turret rotation	370°			

WORK AREA



Weights may vary by +/- 5%
 Technical data may vary by +/- 3%
 *230 kg for FBG basket

CONTACT DETAILS

PALFINGER PLATFORMS ITALY SRL

Via Enrico De Nicola, 31
41122 Modena (MO) - Italy
TEL: +39 059 252426
EMAIL: info@palfingerplatformsitaly.it

KP-P220AXEPM1+EN

The illustrations in the brochure may show units equipped with optional accessories and not always the standard version. National legislation must be complied with during construction/assembly. The dimensions stated are not binding. The company cannot be held responsible for any changes in technical information, inaccuracies, or translation errors.