

ETC MH 40 IH - Insulated Articulated Telescopic

Ford 2025 F-600 4x4



FORD

ETC MH 40 IH - INSULATED ARTICULATED TELESCOPIC 2025 F-600 4X4

STOCK NUMBER: A22355

NEW

AVAILABLE




DESCRIPTION

With a 40' working height, 30' side reach, a 24" x 30" bucket, and continuous rotation, the **ETC MH 40 IH** delivers the maneuverability and reach you expect from a PALIFINGER bucket truck. Single-handle control, basket and turret full-pressure hydraulic controls with complete feathering capabilities, an extended shear ball rotation shaft, replaceable pin bushings, an emergency lowering valve, and engine start/stop at the bucket are powerful standard features.

OFFER INFORMATION

Location details

6635 S. 13th St. | Milwaukee | WI, 53221 - United States 

Dealer Name

Giuffre Bros. Cranes Inc.



Availability

Available

Product type

New

Stock number

A22355

Contact person

Daniel Walsh

Dealer E-mail

dwalsh@giuffre.com

Dealer phone

414-764-9200

\$ 199,900



ETC MH 40 IH - Insulated Articulated Telescopic
Ford 2025 F-600 4x4

AERIAL DETAILS

Insulated / Non-Insultated	Insulated	Type	Articulated Telescopic
		Material Handler	Yes

CHASSIS DETAILS

Condition	New	Make	Ford
		Model	F-600

AERIAL UNIT DETAILS

- 40 ft Bucket Height
- 45 ft Working Height
- Continuous Rotation
- Insulated Boom
- Articulated-Telescopic
- Full Hydraulic Controls
- 180 Degree Platform Rotator
- 24 x 30 Platform
- Hydraulic Jib Winch with 1,000 lb Lift Capacity
- Two Front Outriggers

BODY MODEL DETAILS

- PALFINGER Steel Service Bed
- 132 in Length + 36 in Tail Shelf
- 60 Galvanneal Steel Material
- Stainless Latches
- Master Lock System for All Doors

CHASSIS DETAILS

- New Ford F-600
- 6.7 Liter Diesel Engine
- Automatic Transmission
- 4x4
- AM/FM Radio
- Hitch
- Heat/AC
- Auxiliary Lighting

PALFINGER

ETC MH 40 IH

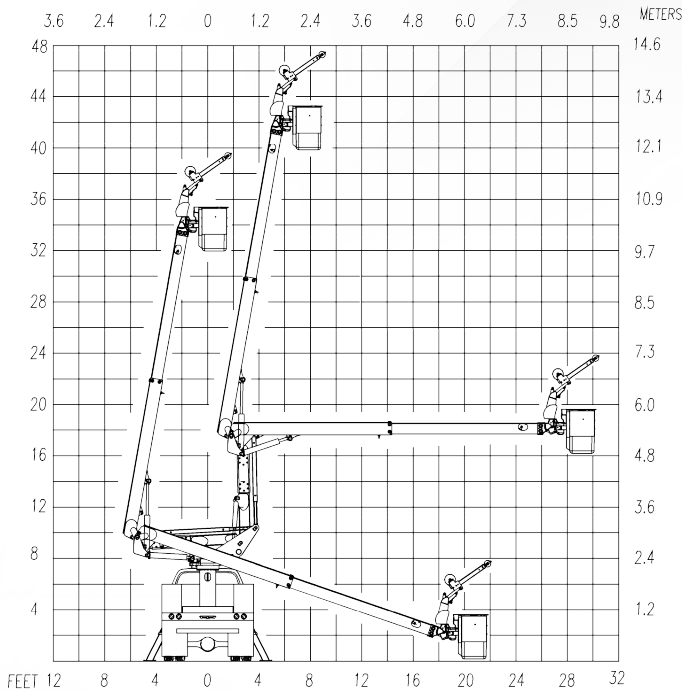
ARTICULATED/TELESCOPIC—INSULATED
MAXIMUM VERSATILITY



ETC MH 40 IH



OPERATIONAL ZONE



With a 40' working height, 30' side reach, a 24" x 30" bucket, and continuous rotation, the ETC MH 40 IH delivers the maneuverability and reach you expect from a PALFINGER bucket truck. Single-handle control, basket and turret full-pressure hydraulic controls with complete feathering capabilities, an extended shear ball rotation shaft, replaceable pin bushings, an emergency lowering valve, and engine start/stop at the bucket are powerful standard features

GENERAL SPECS:	Height to Bottom of Bucket 40'	Working Height 45'	Side Reach End Mount 30'	Rotation Continuous	Lower Boom Articulation -3° to 89°	Upper Boom Travel -23° to 80°	Rated Bucket Capacity 400 lbs.	
OPTIONS:	Emergency hydraulic power (12VDC)	Hydraulic tool circuit	Two-speed throttle	Bucket liner	Bucket cover	180° hydraulic bucket rotator	Outriggers	DC power options, including cab comfort
MINIMUM VEHICLE REQUIREMENTS:	GVWR (dual rear wheels) 19,500 lbs.	C.A. 84 in.	ANSI 92.2 Category C 46kV and below					