

ETC 40 IH - Insulated Articulated Telescopic Ford

2025 F-600



FORD

ETC 40 IH - INSULATED ARTICULATED TELESCOPIC 2025 F-600

STOCK NUMBER: 25808


NEW

AVAILABLE



OFFER INFORMATION

Location details

4000 King Air Drive , Bryan, TX, 77808 - United States 

Dealer Name

Infrastructure Equipment Group



Availability

Available

Product type

New

Stock number

25808

Contact person

Jordan Tuttle

Dealer E-mail

jtuttle@ieg.com

Dealer phone

+1-979-999-9000

\$ 169,900

ETC 40 IH - Insulated Articulated Telescopic Ford 2025 F-600



ETC 40 IH BUCKET TRUCK

- 2024 Palfinger ETC-40-IH
- Insulated
- Articulating & Telescopic Boom
- 45 ft Working Height
- 29 ft Side Reach
- 400 lb Bucket Capacity

BODY DETAILS

- Utility Tool Box Body
- Curb Side Bed Access

CHASSIS DETAILS

- 2024 Ford F-600
- 4x4
- Diesel
- Power Windows
- Keyless Entry
- Back up Camera

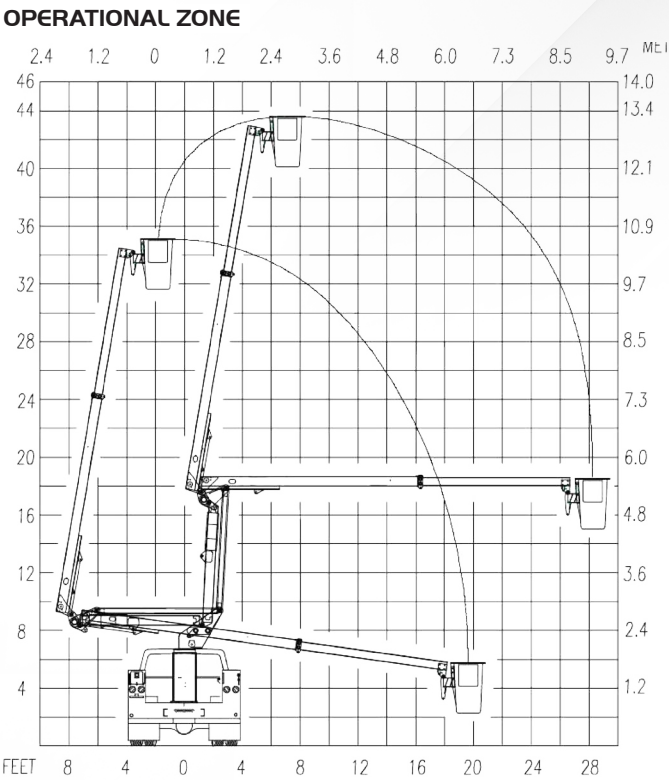
The PALFINGER logo is located in the top right corner of the image. It consists of the word "PALFINGER" in a bold, black, sans-serif font, enclosed within a yellow rounded rectangular border. The background of the entire image is a photograph of a white Ram pickup truck with a Palfinger ETC 40 IH boom lift. The lift is extended high into the air, reaching a wooden utility pole. A worker in a yellow safety harness is visible in the basket of the lift, working on the pole. The truck is parked on a grassy field with a line of green trees in the background under a blue sky with scattered white clouds. The lift's boom is white with yellow accents and has the "PALFINGER" logo on it. The truck has a black grille with the "RAM" logo and a white utility box on the back.

PALFINGER

ETC 40 IH

ARTICULATED/TELESCOPIC — INSULATED
MAXIMUM SIDE REACH

ETC 40 IH



PALFINGER’s powerful ETC 40 IH features continuous rotation, single-handle bucket control, in-basket and turret full-pressure hydraulic controls, and manual shear ball rotation. In addition, the 24”x30” bucket offers engine start/ stop and tilt/rescue features.

GENERAL SPECS:	Height to Bottom of Bucket	Working Height	Side Reach End Mount	Stowed Height	Rated Bucket Capacity
	40'	45'	29' 4"	10' 4"	400 lbs.

OPTIONS:	Emergency hydraulic power (12VDC)	Hydraulic tool circuit	Two-speed throttle	Bucket liner	Bucket cover	180° hydraulic bucket rotator	Outrigger options	DC power options, including cab comfort

MINIMUM VEHICLE REQUIREMENTS:	GVWR (dual rear wheels)	GAWR (front)	GAWR (rear)	C.A.	ANSI
	19,500 lbs.	7,000 lbs.	13,500 lbs.	60 in.	92.2 Category C 46kV and below

*All specifications are based on the 40” frame height and subject to change without notice. Bucket trucks shown in this brochure are partially optional equipped and do not always correspond to the standard version. Country-specific regulations must be observed. Dimensions may vary. Subject to technical changes, errors and translation mistakes.