

ETC 40 IH - Insulated Articulated Telescopic Ford

2025 F-600 XL



FORD

## ETC 40 IH - INSULATED ARTICULATED TELESCOPIC 2025 F-600 XL

STOCK NUMBER: COMING SOON 4!

NEW

ARRIVING SOON



### OFFER INFORMATION

Location details

5115 N Broadway | Wichita | KS, 67219 - United

States

Dealer Name

Master Tech Truck and Equipment



Availability

Arriving Soon

Product type

New

Stock number

Coming Soon 4!

Contact person

MTTE Sales

Dealer E-mail

MTTEinfo@MTTE.pro

Dealer phone

316-765-6883

# ETC 40 IH - Insulated Articulated Telescopic Ford 2025 F-600 XL



## ETC 40 IH BUCKET TRUCK

## BODY DETAILS

### PALFINGER Bucket: ETC 40 IH

- 44' 9" Working Height
- 39' 9" Ground To Bottom Of Bucket
- 29' 6" Side Reach With End Mount Bracket
- **CONTINUOUS ROTATION**
- **INSULATED**
- Fiber Glass Inner Boom
- Body Harness With Deceleration Lanyard
- Emergency Upper Boom Controlled Decent Value
- End Mount Bucket Bracket With 180° Hydraulic Rotator
- Manual Emergency Lowering Valve At Bucket Controls
- Non-Metallic 4-Function Single-Handle Control With Hydraulic Tool Circuit With Flow Divider And Pressure Relief
- Bucket Cover With Foam Insert For 24x30 Bucket
- 400 lb BUCKET CAPACITY
- **PTO & Pump Powered Hydraulics**

### 11' Brand FX BFXB 84DLSW2 Standard Service Body

- **Pack Depth:** 20.00
- **Floor Width:** 54.00
- **Pack Height:** 42.00
- Steel Understructure – Aluminum Tread Floor
- Stainless Steel Rotary Latch
- Aluminum Tail Skirt
- Standard Shelving Package
- Torsion Bar Stabilized Build
- Push/Pull Rod Lock System

## CHASSIS DETAILS

\*New Units Coming Soon - Call For Pricing!\* **For Sale – 2025 Ford F-600 XL Bucket Truck – Contact us for more information!**

- **Engine:** 6.7L Power Stroke Turbo Diesel – 330 HP & 750 LB-FT
- **Transmission:** Ford TorqShift HD 10-Spd Automatic
- **Gear Ratio:** 4.30 Limited Slip
- **Wheelbase:** 169"
- **Wheels:** Steel

# ETC 40 IH - Insulated Articulated Telescopic Ford 2025 F-600 XL



- 
- **GVWR:** 22,000 lbs
  - **Front Axle Weight Rating:** 7,500 lbs
  - **Rear Axle Weight Rating:** 15,500 lbs
  - **Fuel Capacity:** 40 gal
  - **CARB Compliant**
  - **DOT Inspected**
  - **PTO Provision** (Power-Take-Off)
  - **Extra Heavy-Duty Suspension For Specific Heavy-Duty Applications**
    - Exhaust Brake
    - Engine Block Heater
    - Rear Differential Lock
    - Chrome Appearance Group
    - Receiver Hitch Pocket, Trailer Tow-Wire
    - Harness & Electrical Light Plug, Holes Drilled For Pintle Hitch Mount, Rear View Camera

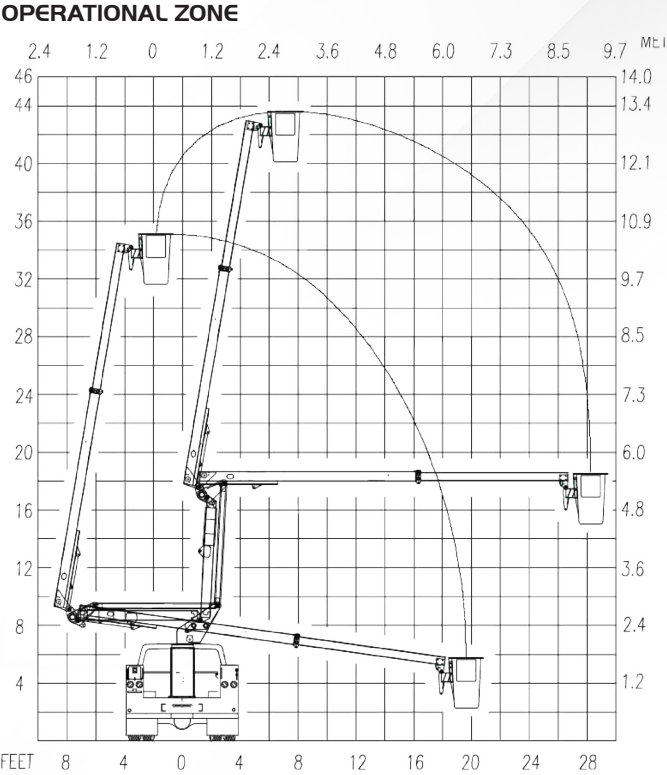
The PALFINGER logo is located in the top right corner of the image. It consists of the word "PALFINGER" in a bold, black, sans-serif font, enclosed within a yellow rounded rectangular border. The background of the entire image is a photograph of a white Ram pickup truck with a Palfinger ETC 40 IH boom lift. The lift is extended high into the air, reaching a wooden utility pole. A worker in a yellow safety harness is visible in the basket of the lift, working on the power lines. The truck is parked on a grassy field with a line of green trees in the background under a blue sky with scattered white clouds. The lift's boom is white with "PALFINGER" written on it in yellow. The truck has a black grille with the "RAM" logo and a white utility box on the back.

**PALFINGER**

# ETC 40 IH

ARTICULATED/TELESCOPIC — INSULATED  
MAXIMUM SIDE REACH

# ETC 40 IH



PALFINGER’s powerful ETC 40 IH features continuous rotation, single-handle bucket control, in-basket and turret full-pressure hydraulic controls, and manual shear ball rotation. In addition, the 24”x30” bucket offers engine start/ stop and tilt/rescue features.

<b>GENERAL SPECS:</b>	Height to Bottom of Bucket	Working Height	Side Reach End Mount	Stowed Height	Rated Bucket Capacity
	40'	45'	29' 4"	10' 4"	400 lbs.

<b>OPTIONS:</b>	Emergency hydraulic power (12VDC)	Hydraulic tool circuit	Two-speed throttle	Bucket liner	Bucket cover	180° hydraulic bucket rotator	Outrigger options	DC power options, including cab comfort

<b>MINIMUM VEHICLE REQUIREMENTS:</b>	GVWR (dual rear wheels)	GAWR (front)	GAWR (rear)	C.A.	ANSI
	19,500 lbs.	7,000 lbs.	13,500 lbs.	60 in.	92.2 Category C 46kV and below

\*All specifications are based on the 40” frame height and subject to change without notice. Bucket trucks shown in this brochure are partially optional equipped and do not always correspond to the standard version. Country-specific regulations must be observed. Dimensions may vary. Subject to technical changes, errors and translation mistakes.