

ETC 35 SNT - Non-Insulated Articulated



Telescopic Ram 2024 4500

RAM

ETC 35 SNT - NON-INSULATED ARTICULATED TELESCOPIC

2024 4500

STOCK NUMBER: 25804

NEW

AVAILABLE



OFFER INFORMATION

Location details

4000 King Air Drive , Bryan, TX, 77808 - United

States 

Dealer Name

Infrastructure Equipment Group



Availability

Available

Product type

New

Stock number

25804

Contact person

Jordan Tuttle

Dealer E-mail

jtuttle@ieg.com

Dealer phone

+1-979-999-9000

\$ 152,500

ETC 35 SNT - Non-Insulated Articulated Telescopic Ram 2024 4500



ETC 35 SNT BUCKET TRUCK

- Palfinger ETC-35-SNT
- 40 ft Working Height
- 26 ft Side Reach
- Electrical Outlet at Upper Controls
- Side Entry Door on Bucket

BODY DETAILS

- Street and Curb Side Tool Boxes
- Dimensions Pure Sine Inverter

CHASSIS DETAILS

- 2024 Ram 4500
- 4x4
- Diesel
- Cummins Engine
- Power Windows
- Keyless Entry

PALFINGER

ETC 35 SNT

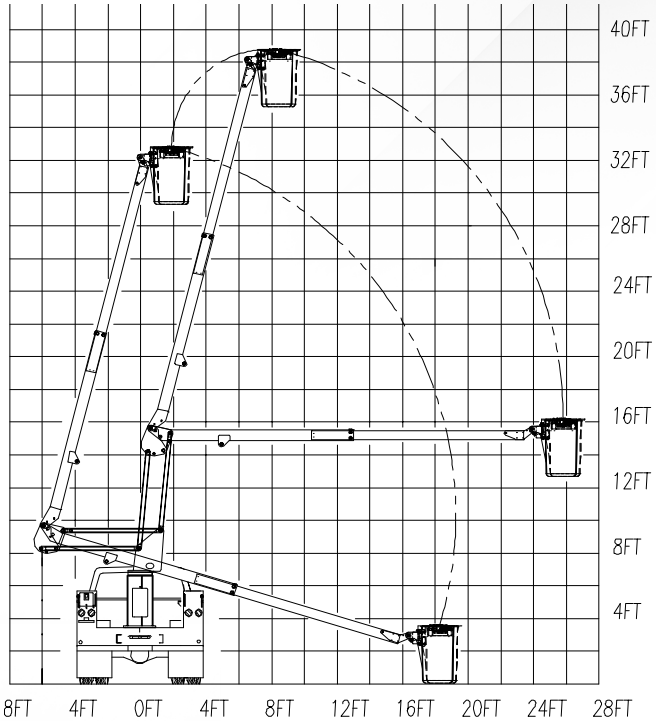
ARTICULATED/TELESCOPIC — NON-INSULATED



ETC 35 SNT



OPERATIONAL ZONE



PALFINGER's non-insulated ETC 35 SNT offers standard 390° non-continuous rotation, emergency upper boom-controlled descent, adjustable wear pads, and replaceable bushings for pins. The 350 lbs. capacity bucket also features engine start/stop, hydraulic leveling, an extended gear-drive shaft for manual rotation, and variable speed controls.

GENERAL SPECS:	Height to Bottom of Bucket 35'	Working Height 40'	Side Reach End Mount 27'	Rotation 390° Non-Continuous	Lower Boom Articulation 0° to 94°	Upper Boom Travel -17° to 74°	Stowed Height 10' 8"	Rated Bucket Capacity 350 lbs.
OPTIONS:	Emergency hydraulic power (12VDC)	Air line to the bucket	Single-handle control	Bucket liner	Bucket cover	180° hydraulic bucket rotator	DC power options, including cab comfort	
MINIMUM VEHICLE REQUIREMENTS:	GVWR (dual rear wheels) 15,000 lbs.	C.A. 60 in.	ANSI Non-Insulated					