

SCANIA

P 900

P450

NEW

AVAILABLE




SPECIFICATION

EQUIPMENT

- GPD-Gravity Powered Drive allows an operation even when the engine is switched off and provides a safe return to the ground at any time
- Secondary control at the turntable offers optimal view of the boom system and allows control from the base
- Additional access ladder to the turntable
- 180° horizontal cage boom rotation
- Powerlift-System, consisting of 3 load-carrying elements and 2 extendable load cross beams with gibbet
- An integrated hydraulic tank in the base frame ensures a low centre of gravity during on-road driving
- 930 mm stabilising stroke to compensate for highly uneven terrain

OFFER INFORMATION

Location details

Modena, 41122 - Italy 

Dealer Name

Palfinger srl

Availability

Available

Product type

New

Dealer E-mail

info@palfingerplatformsitaly.it

v.dalcamo@palfinger.com

Dealer phone

0039059252426

- Wind speed 7 Upgrade allows working at market leading unattained working conditions.
- Extra-large storage space and illuminated tool boxes on the loading area provide space for all work equipment.
- Flashing light; on the left and right side at the turntable

PRODUCT

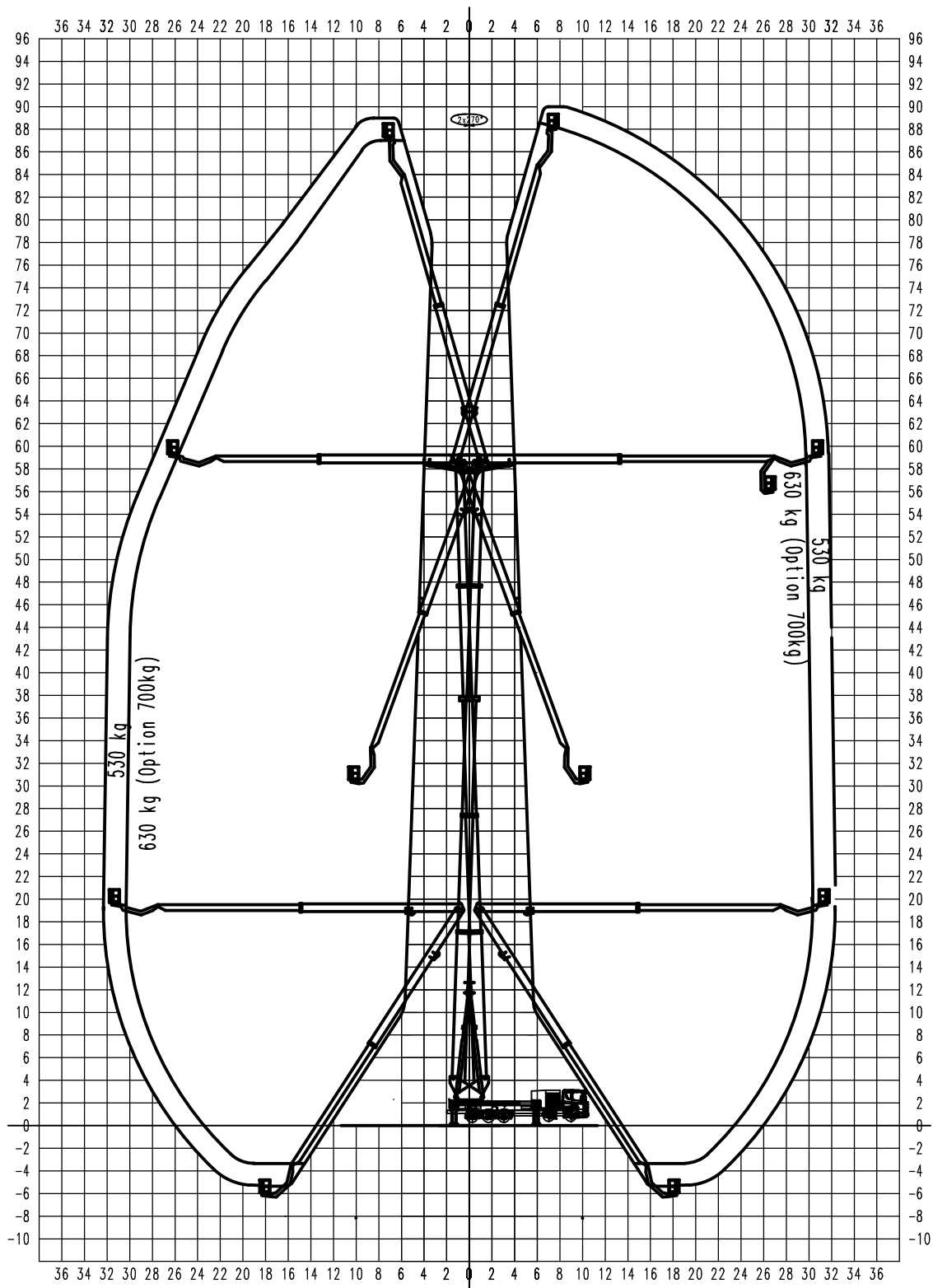
Manufacturer	Palfinger	Turret rotation	500 °
Model	P 900	Basket size	3,88 x 1,05 x 1,10 m
Construction year	2025	Basket capacity	530 Kg
Outreach	32,50 m	Basket turning device	2 x 85°
Max. height of work	90 m	Basket arm angle	180 °
		Basket material	Aluminium

TRUCK

Truck manufacturer	Scania	Power	331KW / 450 PS
Vehicle type	SCANIA P450B	Emmission standard	EURO 6
Drivers cabine	L	Axes	10x4*6
		Gross vehicle weight	48000 Kg

Arbeitsdiagramm

Outreach diagram P900



Fahrzeuggesamtmasse 48t

31.03.2015/F1

Die Reichweiten sind ca.-Maße und sind abhängig vom Fahrgestell, Art der Abstützung und Zusatzausrüstung der Hubarbeitsbühne. Darstellung vom LKW und Gerät haben nur Symbolcharakter und lassen keine Rückschlüsse auf die techn. Ausführung zu.

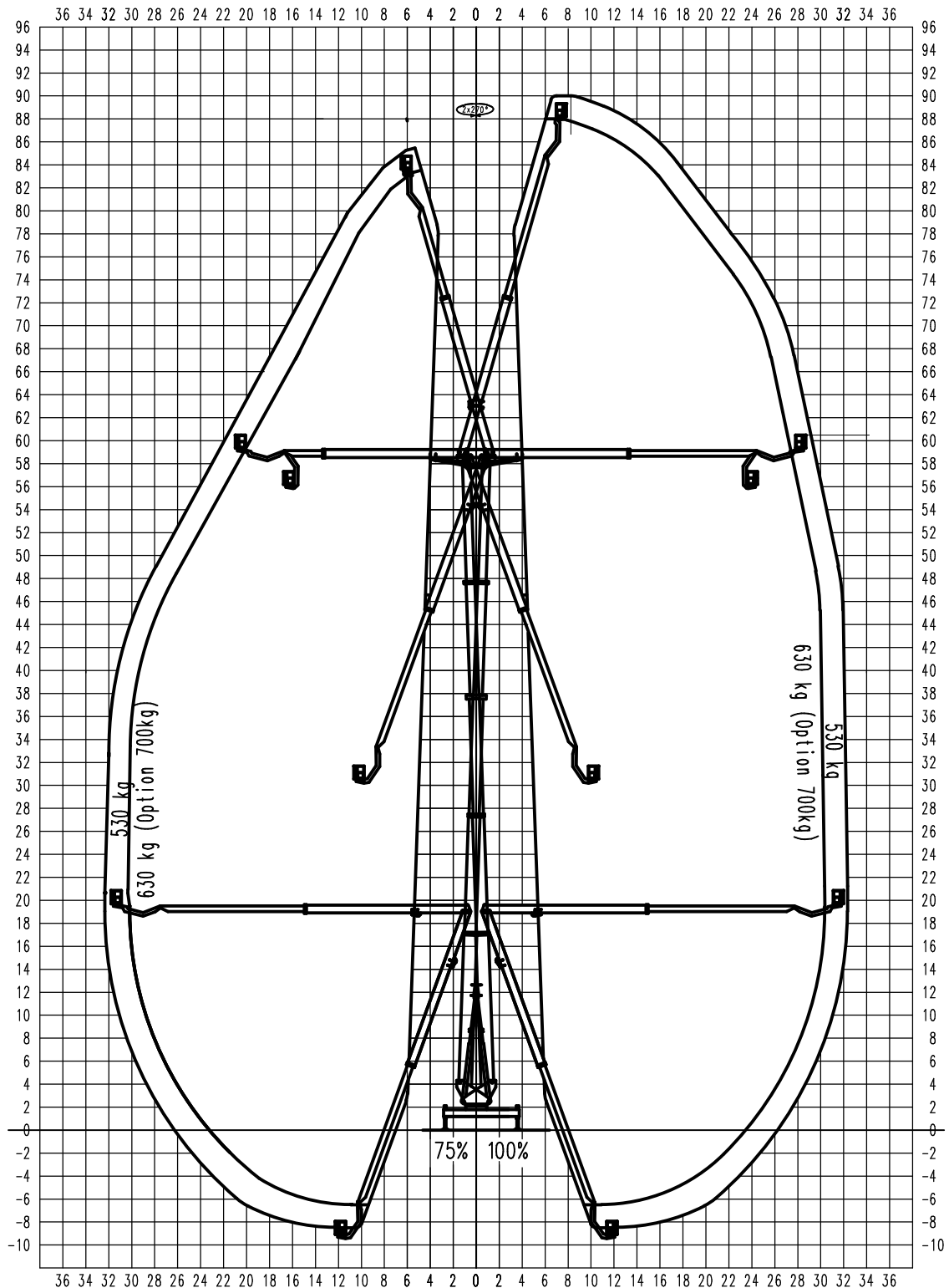
Technische Änderungen vorbehalten!

G.V.W.: 48t

The outreach is depending from the vehicle, type of stabilizing and the additional equipment of the mobile elevating work platform.
We reserve our right to technical alterations without prior notice.

Arbeitsdiagramm

Outreach diagram P900



Fahrzeuggesamtmasse 48t

31.03.2015/F1

Die Reichweiten sind ca.-Maße und sind abhängig vom Fahrgestell, Art der Abstützung und Zusatzausrüstung der Hubarbeitsbühne. Darstellung vom LKW und Gerät haben nur Symbolcharakter und lassen keine Rückschlüsse auf die techn. Ausführung zu.

Technische Änderungen vorbehalten!

G.V.W.: 48t

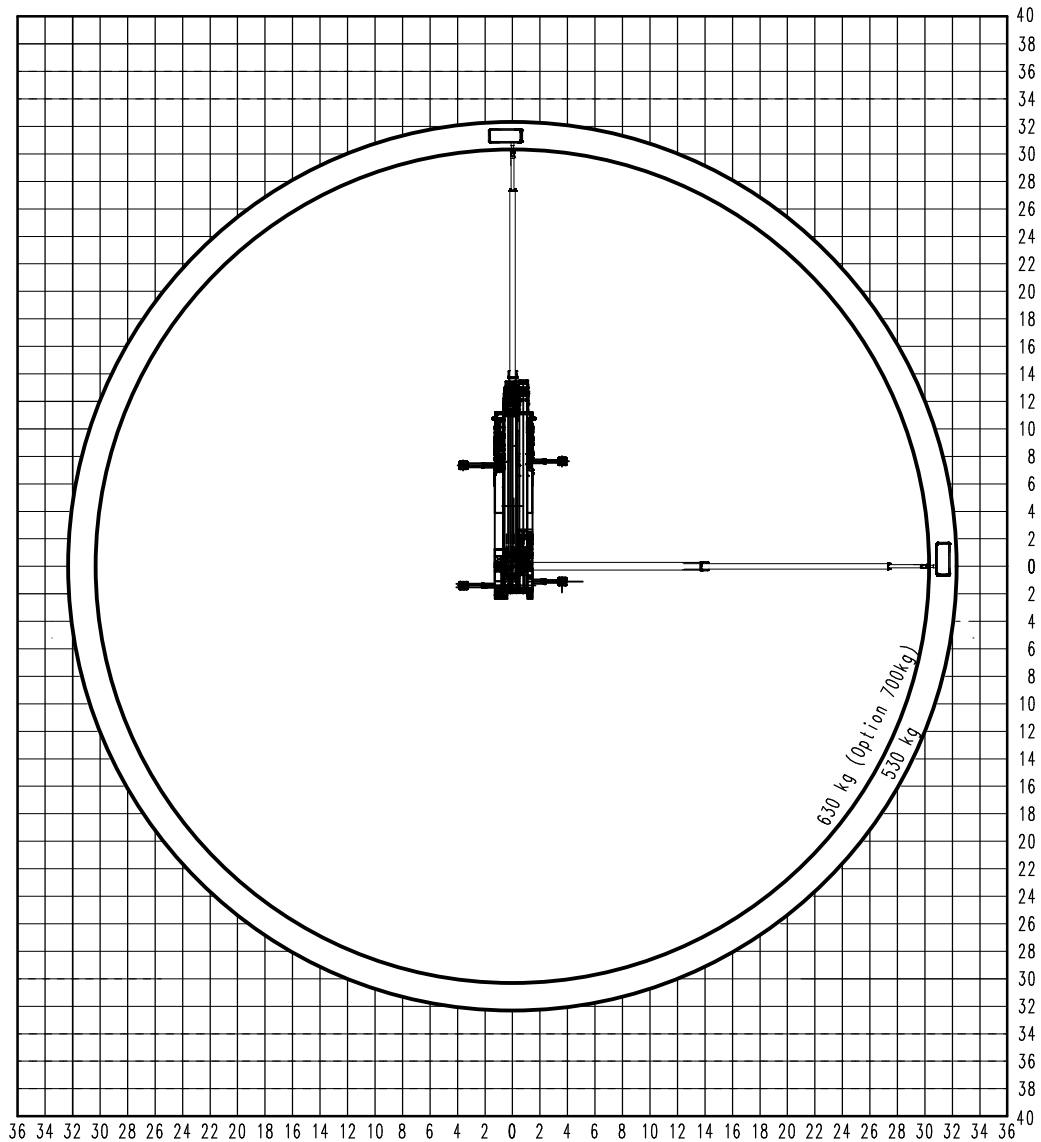
The outreach is depending from the vehicle, type of stabilizing and the additional equipment of the mobile elevating work platform.

We reserve our right to technical alterations without prior notice.

Arbeitsdiagramm

Outreach diagram P900

Arbeitshöhe 20m



Fahrzeuggesamtmasse 48t

31.03.2015/F1

Die Reichweiten sind ca.-Maße und sind abhängig vom Fahrgestell, Art der Abstützung und Zusatzausrüstung der Hubarbeitsbühne. Darstellung vom LKW und Gerät haben nur Symbolcharakter und lassen keine Rückschlüsse auf die techn. Ausführung zu.

Technische Änderungen vorbehalten!

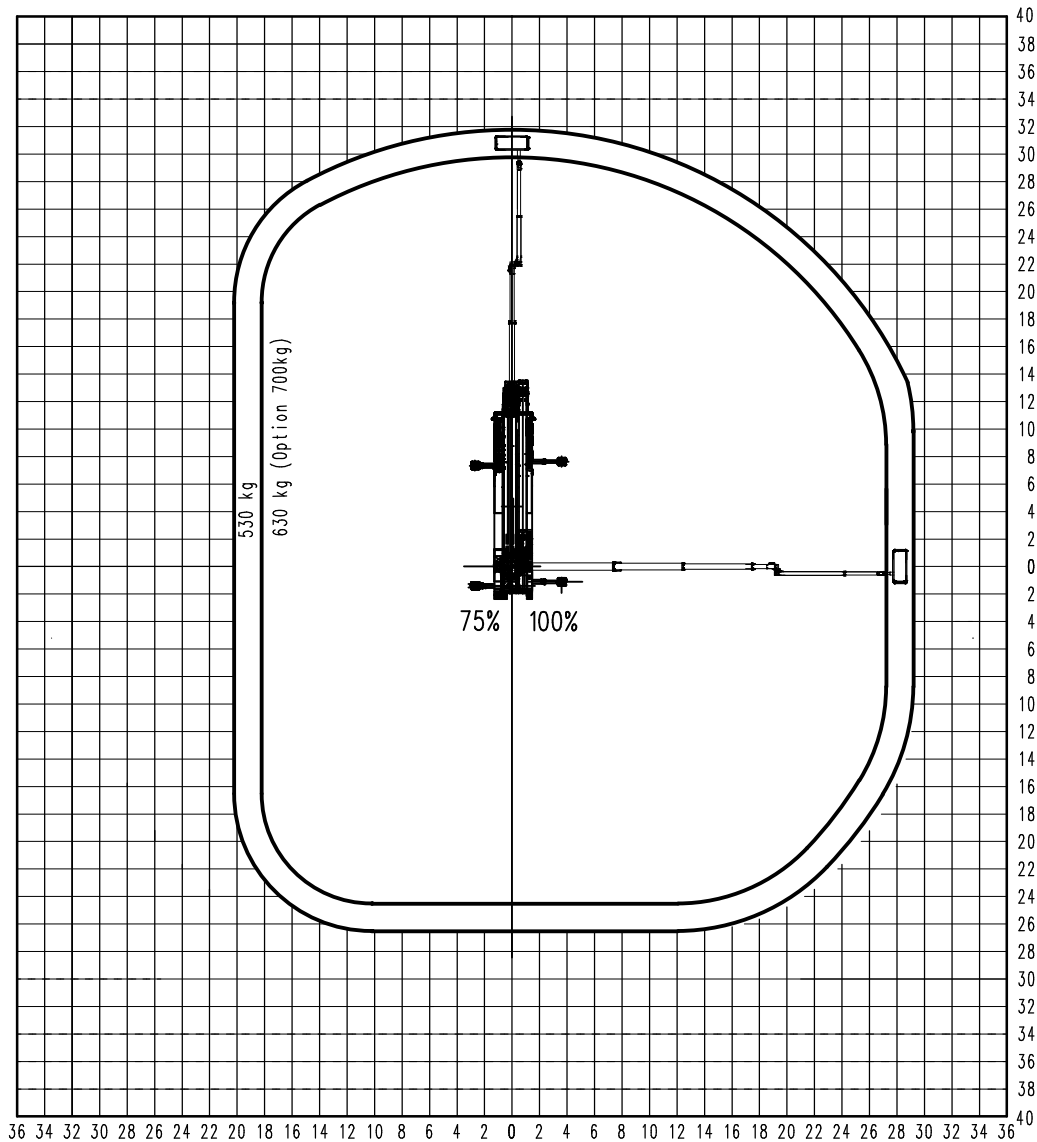
G.V.W.: 48t

The outreach is depending from the vehicle, type of stabilizing and the additional equipment of the mobile elevating work platform.
We reserve our right to technical alterations without prior notice.

Arbeitsdiagramm

Outreach diagram P900

Arbeitshöhe 60m



Fahrzeuggesamtmasse 48t

31.03.2015/F1

Die Reichweiten sind ca.-Maße und sind abhängig vom Fahrgestell, Art der Abstützung und Zusatzausrüstung der Hubarbeitsbühne. Darstellung vom LKW und Gerät haben nur Symbolcharakter und lassen keine Rückschlüsse auf die techn. Ausführung zu.

Technische Änderungen vorbehalten!

G.V.W.: 48t

The outreach is depending from the vehicle, type of stabilizing and the additional equipment of the mobile elevating work platform.

We reserve our right to technical alterations without prior notice.

P 900

**HIGH
PERFORMANCE**

LIFETIME EXCELLENCE



HIGHLIGHTS

- The secondary control (including colour display and seat) allows full second operation on the turntable offers the complete operation of all platform movements as well as the optimum view of the boom system.
- GPD-Gravity Powered Drive allows an operation even when the engine is switched off and provides a safe return to the ground at any time.
- An integrated hydraulic tank in the base frame ensures a low centre of gravity during on-road driving.
- Telescopic cage with 530 kg cage load and integrated preparation for Powerlift system.
- Wind speed 7 Upgrade allows working at market leading unattained working conditions.
- 180° horizontal cage boom rotation
- 930 mm stabilising stroke to compensate for highly uneven terrain
- Upgraded to wind speed 7 (15.5m/s) which allows operations that were not previously permitted due to wind speed restrictions.
- Extra-large storage space and illuminated tool boxes on the loading area provide space for all work equipment.

STANDARDS


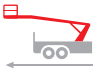











- Memory function
- Automatic stabilizer and levelling systems
- Anemometer
- Seat in the cage
- Mobile Intercom System
- 4 working lights at the subframe for illumination of stabilizing area
- Multiple emergency lowering systems from the basket and base
- Emergency drive via electrical pump
- Hydraulic electricity generator 400 V 6,6 KVA

OPTIONS

- Powerliftsystem with two boom winches
- Additional access ladder to the secondary control
- Illumination-Packages

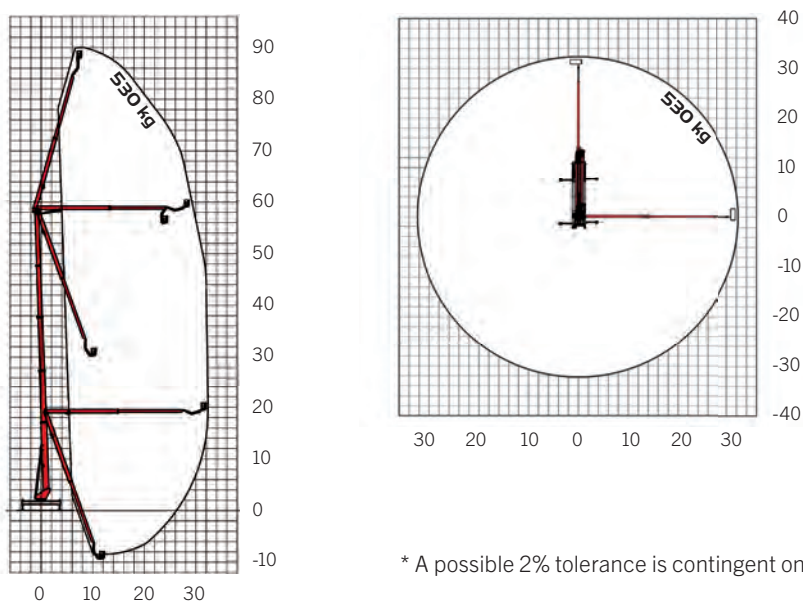


TECHNICAL SPECIFICATIONS

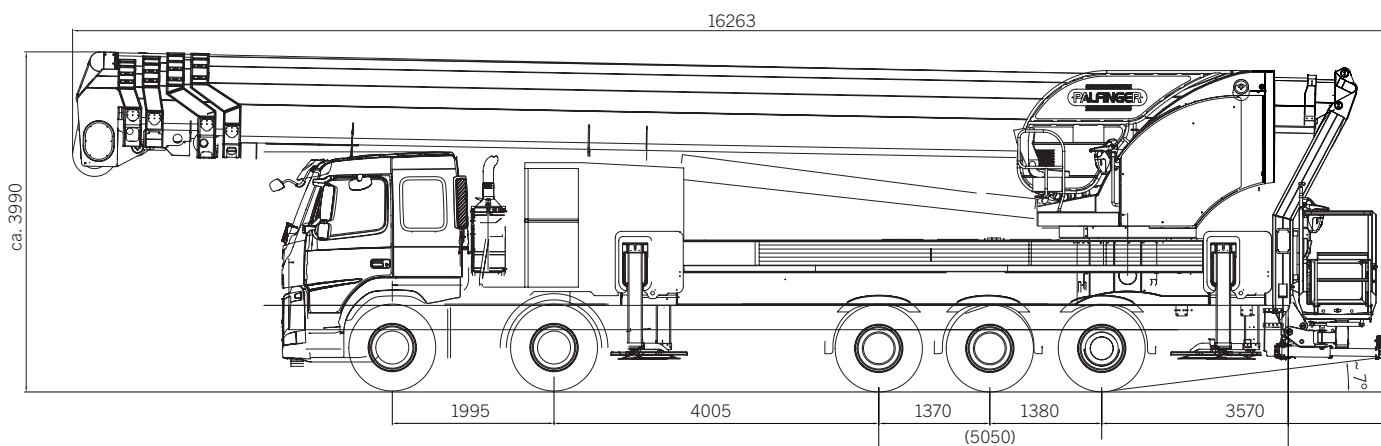
	Total weight*	48000 kg		max. outreach	32,50 m
	Overall length	16,20 m		Rotation angle of turntable	500°
	Width in transportposition	2,54 m		Rotation angle of cage	+/-85°
	Height in transportposition	3,99 m		Rotation angle of cage boom	180°
	max. stabiliser width	8 m		Size of cage	3,88 x 1,05 x 1,10 m
	max. working height	90 m		max. cage load	530 kg
	max. cage bottom height	88 m			

* Depends on truck chassis

WORKING DIAGRAMS



DIMENSIONS



YOUR CONTACT

Palfinger Platforms GmbH

Düsseldorfer Str. 100
47809 Krefeld | Germany

KP-P900M2+EN

Units shown in the leaflet are partially optional equipped and do not always correspond to the standard version. Country-specific regulations must be observed. Dimensions may vary. Subject to technical changes, errors and translation mistakes.

Chassis specification

for

Palfinger Platforms

P900

on

Scania P450 B10x4*6 NA

Chassis with cab

Basic vehicle number:	
wheelbase: 1.-2./2.-3./3.-4./4.-5. axle	1990/ 3960/ 1350/ 1450 mm (5950 mm)
Frame overhang:	4520 mm (extend to 5050 mm) from 1. front axle
emission class:	Euro 6
Permissible Total weight:	48000 kg
Permissible front axle load:	2 x 10000 kg
Permissible rear axle load:	2 x 12000 kg ; 1x 9000 kg
empty weight: (inkl.driver, full fuel tank)	maximum 12400 kg
Tyres Front	385/65R22,5
Rear axle tires	315/80R22,5
Tyres trailing axle	385/65R22,5

remark

Overpass on working Krefeld
Please check the admission requirements for this chassis in your country
Vehicle registration and inspection log at manufacturing plant Krefeld
We assume an expense-free delivery of the carrier vehicle in accordance with this specification vehicle. Should alterations be necessary, which are not covered by our respective ZA codes, additional charges may apply.
Flashing lights on the cab, towing equipment, and spotlights on cab roof (3749A) when necessary necessarily order from the chassis manufacturer. Antenna to the right of the flashing lights
We request that you let check the vehicle equipment front belt support by us. Changes can cause an exceedance of the dimensions. If there are deviations in any case a consultation with us is required. The maximum unladen weight must not be exceeded! Administrative costs not corresponding to the specification chassis are charged to you. excl. cost of conversion workshop.
Note: Additional consumers, such as Daytime running lights can affect battery performance and cause the indicator lights often, and the carrier vehicle must be started frequently.

Standard equipment:

Initial selections	
02758AO	Application Aerial platform
02759B	Operation Regional
02625BS	Chassis adaptation + wheel configuration B10x4*6
00889FD	Cab type CP20L
Component Groups	
18516CF	Application and Operation Aerial platform - Regional
18515BN	Chassis adaption and wheel configuration B10 x 4 x 6
18528G	Cab equipment level Basic Regional
18527E	Aerodynamics without air deflectors
18521H	Fuel system regional - rigid
18522J	Fuel system regional normal – medium stop frequency
18517YL	Bodywork equipment Aerial platform - rigid
General Type	
00001A	Product class Truck
01163B	Chassis adaptation Basic
00448S	Wheel configuration 10x4*6
05107S	(Read only Code) Wheel configuration certified 10x4*6
00272B	Chassis height Normal
00828A	Suspension system Leaf front + Air rear
00403B	Steering wheel position left hand
Certificates and plates	
00003C	Plate language German
01453A	Tyre directive 92/23/EU with
Dimensions	
00058D	Chassis width 2600 mm
03239A	Max truck height 4 meters 96/53/EG
19010A	(Read only code) max truck height approved yes
01406NP	Axle distance 5950 mm
01537SZ	Dimension JA/BEP L020 (Bodywork Exchange Parameters) 4520 mm
05737E	(Read only code) Bogie distance rear axle 1-2, 1350
05738C	Bogie distance rear axle 2-3, 1450 mm
Weights	
	Front axle weight Max 2 x 10000 kg
	Bogie weight Max 33000 kg
	Gross vehicle weight Max 53000 kg

Packages	
02749B	Climate system package air condition + manual control + with heating
Styling	
02741G	Exterior colour package, front grille
Engine	
00520A	Fuel Diesel
00142H	Engine stroke volume 13 litres
02471J	Emission level Euro 6
00408RL	Engine type DC13 148 450 hp Euro 6
02679C	Turbocharger duty class (price) Special (mandatory)
04352A	Turbocharger duty class Special
03488A	SCR, Selective Catalytic Reduction with
03636A	NOx control With
03719A	Torque reduction NOx-control With
01104A	Crankcase ventilation type Open
04578A	Crankcase gas cleaning type Centrifugal
02712D	Crankcase gas cleaning type (price) centrifugal (mandatory)
03829A	Oil level indication With
06219A	Powertrain oil type normal
00472AF	Noise suppression 81/82 dBA R51.03
Air intake	
02253E	Air intake front
Cooling system	
00014Q	Fan diameter 750 mm
03925A	Coolant freeze point freezing point -25 degrees Celsius
03993G	Radiator area 70dm2
Exhaust system	
01967D	Exhaust silencer execution Compact
00392B	Exhaust outlet, direction backwards
04329B	Silencer length 623 mm
04810E	Exhaust silencer longitudinal position (XM)2650 mm
Gearbox	
00017TB	Gearbox GRSO905R
01164B	(read only code) front wheel drive no
00387A	Oil cooling for gearbox with
02123B	Refrigerant oil cooler gearbox: refrigerant liquid
02706B	Refrigerant oil cooler gearbox (price) liquid
Opticruise	
02519A	Opticruise with

05112E	Performance modes Economy, standard
04370A	Kickdown with
05735A	Starter interlock gear selector
Clutch	
03575B	Clutch system automatic
Front Axles	
00073AD	Axle weight front, technical 2 x 10000 kg
02986KB	(Read only code) Front axle type AM622T
Rear Axles	
02987GM	(Read only code) Rear axle type AD400TAP
00552DK	Bogie weight, technical 33000 kg (12000+12000+9000)
00021CF	Rear axle gear RBP835
00022AX	Rear axle gear ratio 3,80
00020A	Differential lock with
03359A	Oil filter rear axle With
Tag axle	
01169KD	Tag axle, behind the rear axle AM602TA
00086A	Tag axle lift with
02711B	Tag axle lift (price) A/B - suspension
PTO	
04827A	Power take off ED Prepared
05947A	PTO EG rear with
06392AR	PTO EG rear type EG663F
Fuel tanks	
00077AK	Fuel volume left side 400 dm3
04087W	Fuel tank sectional area LH wide
01372T	(Read only code) Fuel tank XM-position left side 4780
00074B	Fuel volume right side 300 dm3
04088W	Fuel tank sectional area RH wide
01371BG	(Read only code) Fuel tank XM-position right side 4990
00235C	Fuel tank material aluminium
00518A	Fuel filler cap lockable
00557A	Fuel heater with
03974A	Fuel splash protection with
SCR tanks	
04287A	SCR heating system with
04318A	SCR reductant tank volume side RHS 47 dm3
04320C	(Read only code) SCR reductant tank XM-position right side 4700 mm
Chassis	
06741A	Frame strength level 1

00458L	Frame, type F957
07432A	Bodywork holes configuration frame entire frame length
Steering	
01183B	Steering system 2-circuit
01367A	Steering force 70/311/EEC with
02991B	Adjustable steering wheel tilt
02153A	Steering wheel type basic
Suspension front	
02629B	Suspension system front (price) leaf
00034W	Suspension front, leaf springs 4x28, Parabolic
03942A	Spring bushing material front steel
05057A	Shock absorber setting front axle comfort
Suspension rear	
03226A	Air suspension rear type 2-spring
02259A	Shock absorber rear axle With
02487F	Level adjustment speed Fast
04027A	Level adjustment extra air tank 2 pieces
04029A	Level adjustment control truck/trailer Truck
02488E	Alternative predefined chassis levels 1 extra drive + 2 memory
02972A	Load transfer according to EC 97/27 With
00084D	Load limit at 11500 kg
01353AA	Load transfer with
01528A	Load transfer, tag axle position always down
06028B	Load transfer limit 11500 kg
06029B	Load transfer manoeuvring max load transfer request
01911D	Speed limitation for load transfer 30 km/h
02478B	Axle load display rear
Anti-roll bar	
00092D	Anti-roll bar, front Extra stiffness
02768E	Anti-roll bar, front (price) Extra stiffness, double front axle
Electrics	
00095J	Battery 180 Ah
03979A	Battery position left hand side
01122D	Alternator charge 100 A
03501A	Preparation for toll collect with
ADR	
01962B	ADR Gross Train Weight No

Wheels & Mudguards	
Tyres	
04355MS	Tyre type front axle 385 / 65R22.5 Regional Steer Continental
04356LK	Tyre type rear axle 315 / 80R22.5 Regional Drive Continental
04358MS	Tyre type tag axle behind drive axle 385/65R22.5 Regional Steer Continental
Rims	
05001FA	Rim type front axle 22.5 x 11.75 steel
05002DA	Rim type rear axle 22.5 x 9.00 steel
05004FA	Rim type tag axle behind drive axle 22.5 x 11.75 steel
Wheel equipment	
00148B	Wheel nut cover steel stainless
03688C	Sticker wheel nut retight German language
01233B	Wheel chock 2 pieces
Mudguard front	
05071B	Front mudguard size 675 mm
05828A	Spray-suppression according to EU 109/2011 with
01421A	Spray suppression with
00053C	Mudflap, front with
05206C	Front wheel arch trim panel size 565 mm
Brake system	
01493AB	Brake category AB
00039B	Brake adaptation Rigid
01405A	Wheel brake drum
02452A	Brake control Pneumatic
02647A	Brake control combination pneumatic
01339A	ABS, Anti-lock brakes With
00259A	Traction control with
02959A	Load sensing With
02458C	APS, Air Processing System Air management high capacity
06171A	Parking brake system pneumatic
05848A	Parking brake trailer control braked by service line
Wheel brakes	
00028B	Brake chamber type 1st front membrane + spring
00005B	Brake chamber type, 2nd front membrane + spring
00008B	Brake chamber type, 1st rear membrane + spring
00010B	Brake chamber type, 2nd rear membrane + spring
01175A	Brake chamber type trailing tag axle membrane
01442A	Brake shoe width 10 inch rear axle with
Auxiliary brakes	
04579A	Retarder type R3500
06302B	Auxiliary brake control automatic

Body and chassis adaption	
01557C	Closing crossmember with
04341A	Closing crossmember profile U-profile 5 mm
Bodywork interface	
05837A	Bodywork Communication Interface, BCI with
07901CA	Bodywork electrical interface FFU crane 01
07331A	Symbol lens instrument cluster general
02411F	Cable harness for bodybuilder 7+7+7
03023D	Cable harness for bodybuilder frame 8m
03024A	Cable harness for bodybuilder roof with
03314A	Cable harness additional switches With
03313B	Remote control engine start Prepared
Miscellaneous	
19009A	(Read only code) RUP approved Yes
04499A	Registration plate holder rear type Panel
Cab exterior	
00042G	Cab type CP
02521G	Cab suspension air comfort
01659B	Cab tilting mechanical
00060A	Sun visor, external with
05174A	Horn in front, type compressed air 118 dB
02398B	Front Underrun Protection, FUP directive
04932B	Bumper protrusion 40 mm
05065A	Bumper beam vertical position high
Windows	
02313A	Windscreen Tinted
05084A	Door window glass type single
01331C	Window side Left and right
04498A	Window side glass type single
00066A	Window, rear wall with
Mirrors	
04935B	Rear view mirror glass driver side spherical
04936B	Rear view mirror glass passenger side spherical
04934A	Rear view mirror type A
06784A	Rear view mirror casing shape smooth
04937A	Rear view mirror heating with
05128B	Rear view mirror electrical adjustable passenger and driver side
02181C	Wide angle mirror passenger and driver side
04938A	Close-proximity mirror manual adjusted

01902B	Frontview mirror manual adjusted
Lock and alarm	
05123C	Locking type cab remote central locking
03889A	Frequency remote lock 433 MHz
02343A	Number of keys/remotes Two
02344A	Immobiliser With
Lamps	
02983E	Headlamp type H7
00474A	Headlamp asymmetry Right hand
03081A	Daytime Running Light, DRL With
03908B	Daytime Running Light, DRL function With LED DRL + position lamps
02415C	Headlamp levelling manual
02413A	Fog lamp front With
06044B	Fog lamp front type LED 2 diods
01313A	End outline marker lamp White
01330A	Beacon With
00313B	Side marker lamps
07176A	Side marker lamp direction indication
03981A	Taillamp type bulb
01532A	Taillamp position on bracket
01533B	Taillamp cable length extended 1200 mm
02412A	Reverse alarm with
Cab interior	
01431J	Seat category, driver side premium
01432D	Seat category, passenger side folding
05028C	Seat upholstery driver side velour black
05029C	Seat upholstery passenger side velour black
05022A	Seat adjustable shock absorber driver side with
04309A	Seat upper backrest adjustable driver side With
05024A	Seat heating driver side with
05026A	Seat armrest driver side with
04995A	Seating passenger side 1 seat
01511C	Warning signal for unconnected seat belt lamp and audio signals
Beds	
06563A	Bed lower 800 mm, fixed
05211B	Bed lower, mattress foam
03686A	Bed safety net With
Storages	
02042C	Rear wall storage Refrigerator
Interior	
02299A	Wall panel and headlining material vinyl
02577A	Door panel Plastic

05542A	Handle above door with
00143A	Curtain door & windscreen with
00419A	Curtain for bed with
02162A	Protective mats floor rubber
02168A	Mat centre floor rubber
Instruments	
02172E	Instrument panel finish hard
04903A	Instrument panel lower part colour dark sand
02301P	Instrument cluster 4 inch screen km/h
03888A	Bodywork info in Instrument Cluster With
02303G	Tachograph Digital ADR Continental
03956A	Tachograph data upload With
06445GJ	Speed limitation 89 km/h
06446H	Speed limitation legal 90 km/h
03685DE	Sticker assistance Ph +492618878888
03687C	Sticker vehicle towing German language
Climate System	
05208A	Climate system heating with
00097A	Air conditioning with
02200A	Climate system control manual
00118R	Auxiliary heating WTA cab heater 3kW
Lightning	
04843A	Internal lighting normal
03758C	Reading lamp lower bed Right + left side
Communications	
05120A	Infotainment system 2 DIN with 5 inch screen (Advanced)
02176A	Loudspeaker 2 x 20W
06405A	Radio tuner region Europe
03885A	Bluetooth With
06499A	USB IP centre position
00391C	CB radio Prepared with 12V outlets
03808C	Communicator C300 complete
05198A	Communicator tele operator Telenor
04019A	FMS, Fleet Management System preparation Gateway (interface)
05750A	12/24V sockets Basic
Manuals	
06151C	Driver's manual language German
06152A	Driver's manual extra language English
Rescue Equipment	
00466E	Jack with

Index -
Date 20.05.2019

PLATFORMS | AREA SALES MANAGER



HEAD OF SALES
MICHAEL GRUBÖCK



LAURA GARAGNANI

Responsible Areas:
France, Portugal, Spain, Ireland United Kingdom



CHRISTIAN BUSCH

Responsible Areas:
Switzerland, Slovakia, Hungary, Romania, Bulgaria, Australia, New Zealand, Georgia



TIMO LENZEN

Responsible Areas:
Norway, Sweden, Finland, Island, Denmark, Faroe Islands, Latvia, Lithuania, Estonia, Czech Republic, Poland, Ukraine, Moldova



SARAH SCHIER

Responsible Areas:
Netherlands, Belgium, Luxembourg



NICOLAS HARTER

Responsible Areas:
Slovenia, Croatia, Greece, Cyprus, Serbia, Bosnia, Kosovo, Montenegro, Albania, Macedonia, Israel, Turkey, Georgia, Syria, Lebanon, Jordan, Iraq, Iran, Afghanistan, Saudi Arabia, Kuwait, Bahrain, Qatar, UAE, Oman, Yemen



N.N.

Responsible Areas:
Africa



JOHANN POSCHNER

Responsible Areas:
Germany, Austria



ALFREDO CAREDDU

Responsible Areas:
Italy, Malta

