

P 220 AXE-E Smart Plus Iveco IVECO DAILY



35S14

IVECO

**P 220 AXE-E SMART PLUS**

IVECO DAILY 35S14

NEU

VERFÜGBAR


SYMBOLFOTO

AUF LAGER



### INFORMATIONEN ZUM ANGEBOT

Montage- & Besichtigungsstandort

Modena, 41122 - Italien 

Verkaufsabwicklung und Auslieferung durch Händler:

Palfinger srl

Verfügbarkeit

Verfügbar

Produktzustand

Neu

E-Mail

[info@palfingerplatformsitaly.it](mailto:info@palfingerplatformsitaly.it)

[v.dalcamo@palfinger.com](mailto:v.dalcamo@palfinger.com)

Telefonnummer

**0039059252426**

35S14

**PRODUKT**

<b>Hersteller</b>	PALFINGER	<b>Drehbereich</b>	370°
<b>Gerätetyp</b>	P 200 AXE-E Smart Plus	<b>Korbgröße</b>	1.4 x 0.84 x h 1.1 m
<b>Reichweite</b>	13,00 m	<b>Korblast</b>	250 kg
<b>Arbeitshöhe</b>	21,9	<b>Korbschwenkeinrichtung</b>	90+90
		<b>Korbmaterial</b>	alu

**FAHRZEUG**

<b>LKW Hersteller</b>	IVECO	<b>Achsen</b>	4x2
<b>Schadstoffklasse</b>	EURO 6 E	<b>Zulässiges Gesamtgewicht</b>	3500 Kg

## **P 220 AXE-E SMART PLUS**

**ARTICULATED PLATFORM  
WITH UNBEATABLE  
OUTREACH. IDEAL FOR  
WORKING BEYOND  
OVERHEAD OBSTACLES.**

**LIFETIME EXCELLENCE**





## STRENGTHS

- High-performance articulated aerial platform installed on 3.5 t truck.
- The most compact design in its class.
- Multifunction electric controls (E) for more precise, faster, more convenient manoeuvring.
- Vertical stabilisation with front-end extending outriggers for better compensation of uneven or sloping ground.
- Single articulated boom system with high lateral outreach .
- Platform with three stabilisation options (PLUS) to cover all working conditions:
  - Within the outer vehicle limits: for maximum compactness overall within small spaces.
  - With front crossmembers extended: for maximum performance when working in elevated positions.
  - Partial stabilisation: for maximum performance with minimum overall dimensions.

## STANDARD

- 12V socket on basket
- 230 V/16 socket A or 110V/16A 12V socket on basket
- 40 l diesel tank
- Aerial section centring display for aerial part closing
- Air/water line from the column to the basket
- Anti-collision system cab/boom
- Cage rotation 90°+ 90°
- Hour meter
- Inclinator with audio alarm signal and signal lights relating to aerial work conditions
- Painting with cathodolysis process, with KTL system patented by PALFINGER
- Preparation for insulation upgrade ability
- Top boom protection
- 4 spreader plates with proper housing on the chassis





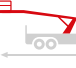



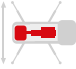



## MAIN ACCESSORIES

- 12V electric pump for emergency lowering
- 230V/16A or 110V/16A electric pump with quick couplings
- Automatic aerial section closure
- Fiberglass basket instead of the standard aluminum version
- 1000 V insulation on fiberglass basket
- Fixed rotary lamp on turret
- Folding left and right-side bordering, h 200 mm
- Plastic storage toolbox at the rear
- Protective brushes for arm extension
- Side protection
- Wired remote control for emergency commands
- Street collision protection

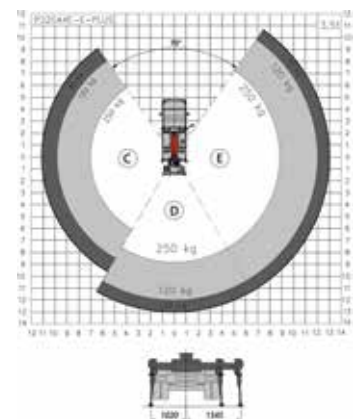
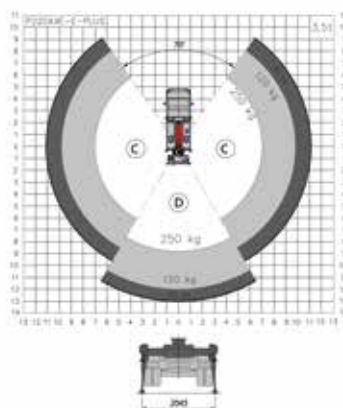
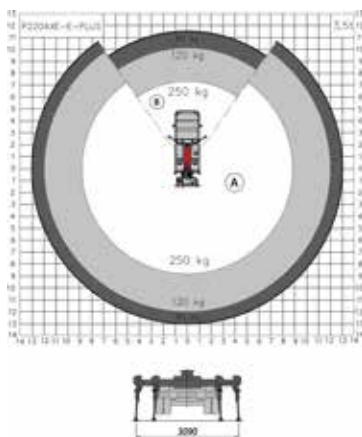
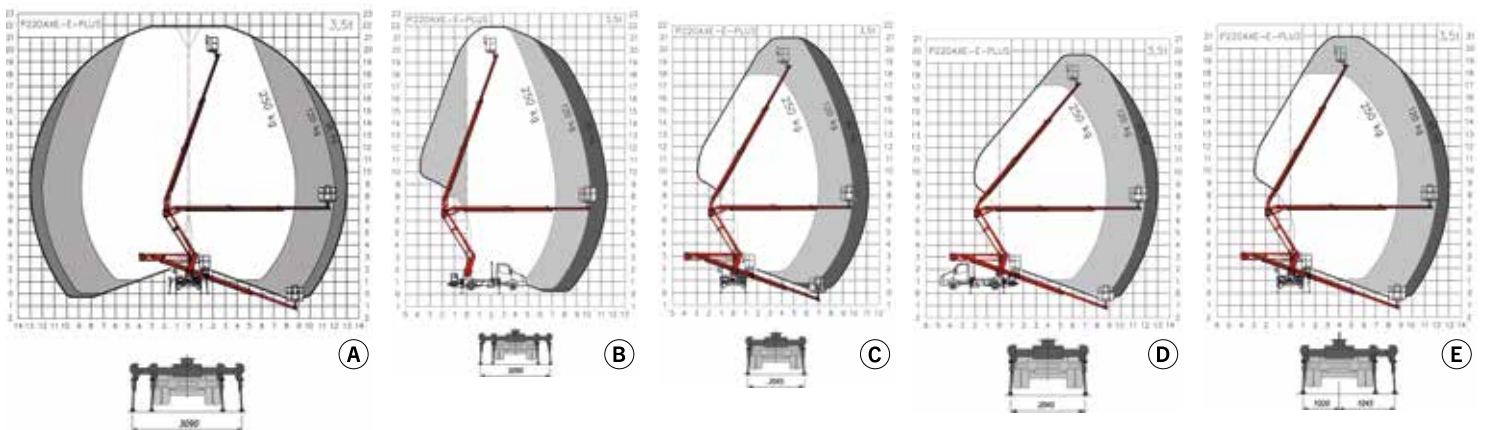
## DIMENSIONS



## TECHNICAL DATA

	Max. working height	21,9 m		Basket rotation	2x90°
	Max. working height from platform deck	19,9 m		Basket dimensions	m 1,4 x 0,84 x 1,1 h
	Max. working outreach	13,0 m		Maximum load capacity people + equipment	250 kg - 230 kg VTR
	Min. outrigger width	2,1 m		Stabilization	Vertical, with front arms extendable hydraulically
	Max. outrigger width	3,1 m		Gross vehicle weight	3,5 t
	Operating angle main boom	-20°/+70°			
	Turret rotation	370°			

## WORK AREA



Weights may vary by +/- 5%  
 Technical data may vary by +/- 3%  
 \*230 kg for FBG basket

**CONTACT DETAILS****PALFINGER PLATFORMS ITALY SRL**

Via Enrico De Nicola, 31  
41122 Modena (MO) - Italy  
TEL: +39 059 252426  
EMAIL: [info@palfingerplatformsitaly.it](mailto:info@palfingerplatformsitaly.it)

**KP-P220AXEPM1+EN**

The illustrations in the brochure may show units equipped with optional accessories and not always the standard version. National legislation must be complied with during construction/assembly. The dimensions stated are not binding. The company cannot be held responsible for any changes in technical information, inaccuracies, or translation errors.