

PK 150002 PERFORMANCE

**THIS LARGE CRANE IS A
PERFECT MATCH FOR
EXTREME CHALLENGES
AS WELL AS FOR
DIFFICULT PRECISION
DEPLOYMENT**

LIFETIME EXCELLENCE



LIFETIME EXCELLENCE

PALFINGER loader cranes are convincing due to their superior life-cycle performance. They are the most economical and also the most reliable over the entire product life. From solution finding to resale.

- **Better solutions**
- **Better efficiency**
- **Better ergonomics**
- **Higher availability**
- **More reliability**
- **Better ecology**
- **Higher serviceability**
- **Higher value retention**



THE MOST POWERFUL OF ITS CLASS

In the royal class of heavy load cranes, PK 150002 Performance sets new standards in terms of quality, working range and lifting capacity. This large high-tech crane masters extreme tasks and maximum loads just as easily as challenging precision work. Manufactured from first-class, super-strong fine grain constructional steel, it impresses with its light weight and extraordinary performance. PK 150002 Performance – a new milestone in crane construction by PALFINGER.





FIRST-CLASS TECHNOLOGY

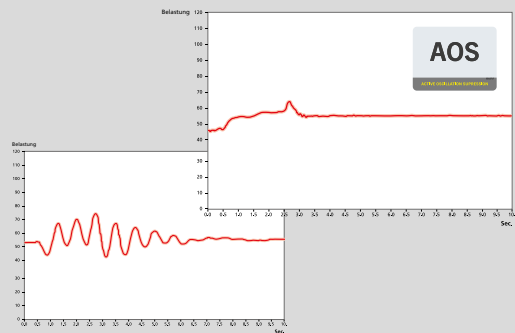
10 Highlights



Control

Dialogue with the operator

Combined with the radio remote control, the load-sensing-capable proportional valves allow a very sensitive control of the crane. The crane can operate simultaneously several functions quickly and efficiently, thanks to the derived hydraulic circuit, fitted as standard.



AOS

Maximum precision and safety

The active oscillation suppression system prevents „post-oscillation“ in the event of rapid braking or load changes. The stress peaks on the extension boom system are reduced and material fatigue and wear are minimised. This increases the resale value.



Endless slewing mechanism

Unrestricted movement

More efficient in operation due to faster loading cycles, since the crane can be slewed over a shorter distance. The crane works more efficiently and faster.



Hose equipment for accessories

Versatile and user-friendly

This option provides the oil supply for accessories. The hoses are routed in compact troughs and plastic link chains. Optimal protection is achieved.



Functional Design

Practical and attractive

Robust plastic covers protect crane parts against dirt and damage. Better appearance and increased operational comfort – during the entire lifetime.



Additional fly jibs

Additional working range

To extend the range of applications of the PK 150002 Performance, additional fly jibs are available in several designs and for various boom versions.



High Speed Extension

For efficient assignments

The High Speed Extension speeds up the extension boom system. Crane works faster and more efficiently.



Outrigger system

For optimum stability

The 9.8 m (32' 2") outrigger system is fitted as standard equipment with stabilizer legs that can be tilted up 180° fully hydraulically and ensures optimal stability.



Integration of the base frame

Perfect integration

The direct integration of the base frame into the supporting frame gives the crane a low overall height.



Support control

Can be operated from both sides

The control valves for crane and additional supports are mounted as standard equipment on the base frame. The switchover between crane and support control is done electrically. Bubble level and hour counters are mounted in the support control valve console.



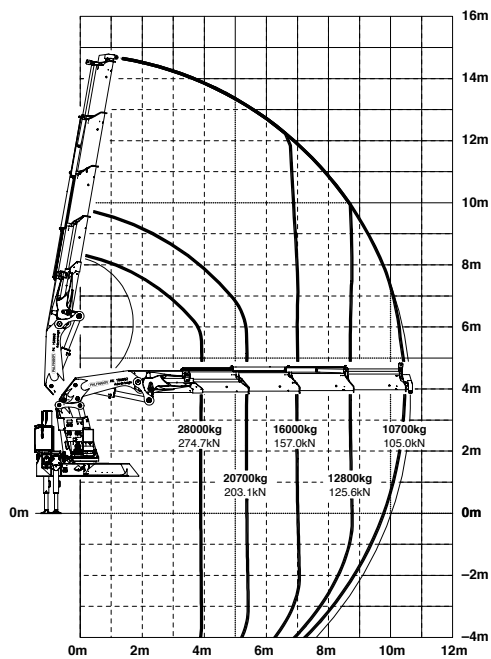
*Optional features / country-specific equipment

PK 150002

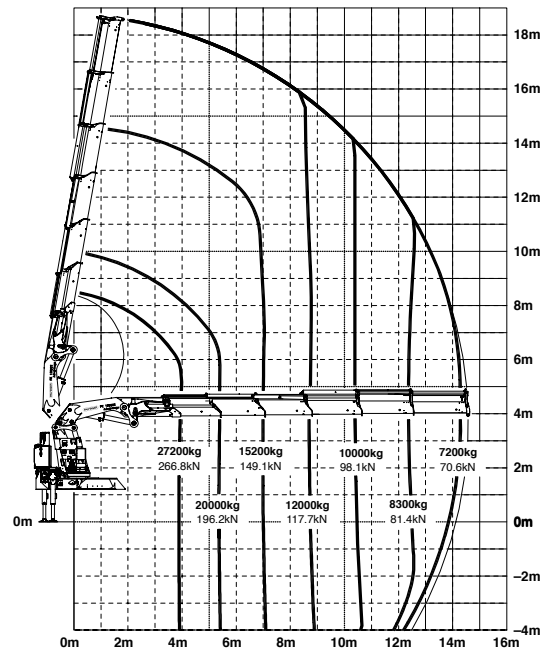
PERFORMANCE

Fly-jibs offer more possibilities for use.

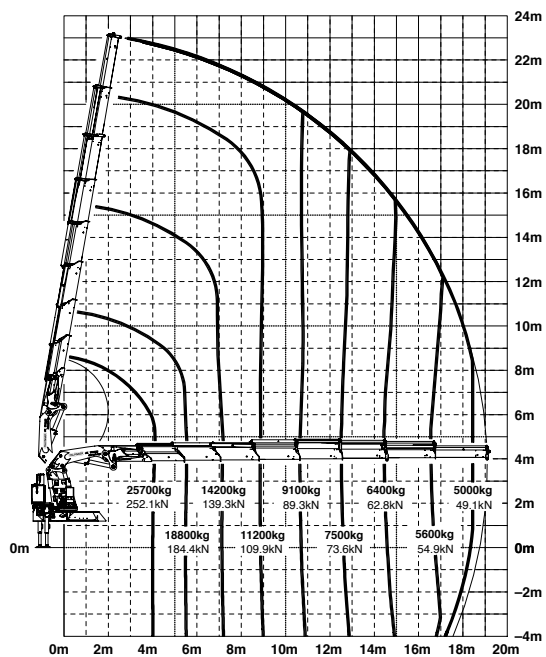
C



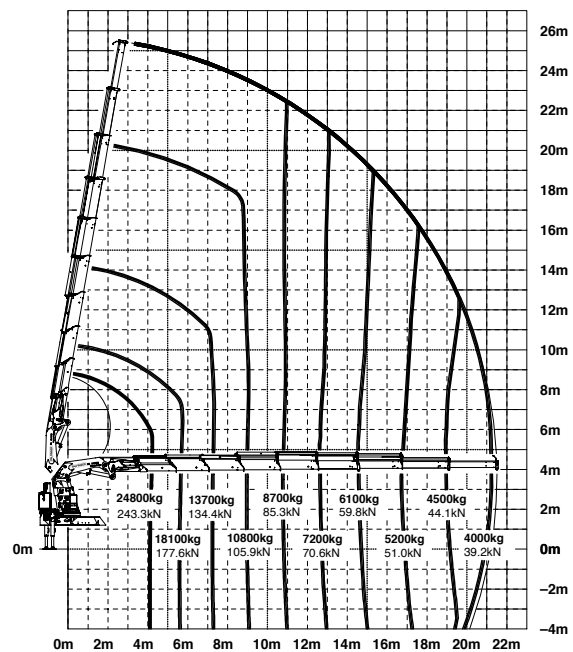
E



G



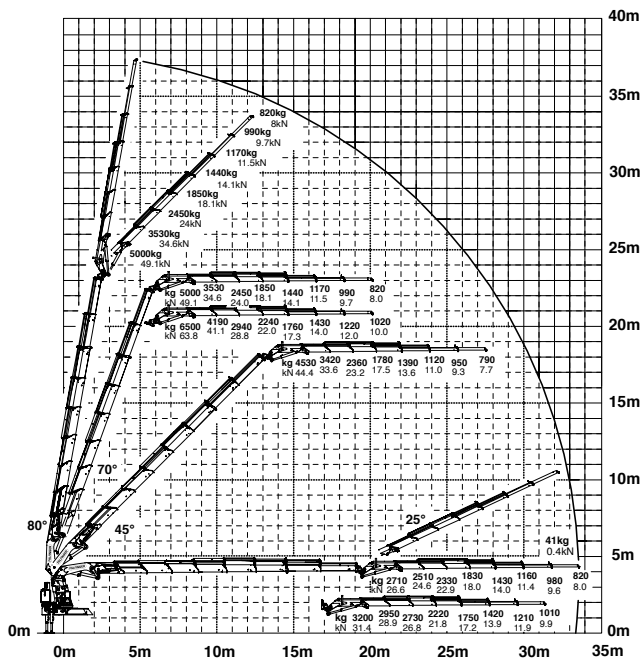
H



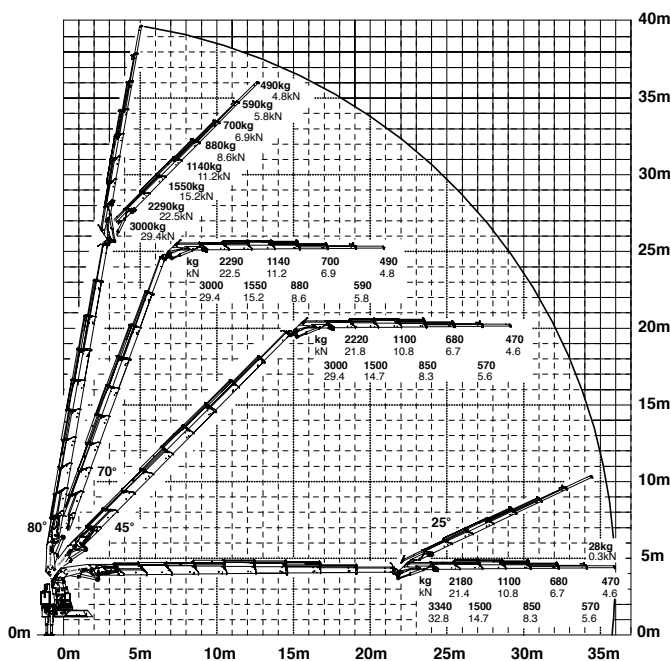
The outreaches stated are with a boom angle of 20° and are therefore not the maximum.

Lifting capacities

G PJ170E JV1 DPS PLUS



H PJ125E JV1 DPS PLUS



max.		40000 kg	88180 lbs	B
4.2 m	13' 9"	26580 kg	58600 lbs	
5.3 m	17' 5"	21290 kg	46940 lbs	
6.9 m	22' 8"	16500 kg	36380 lbs	
8.6 m	28' 3"	13260 kg	29230 lbs	

max.		40000 kg	88180 lbs	C
4.2 m	13' 9"	26220 kg	57800 lbs	
5.3 m	17' 5"	20900 kg	46080 lbs	
6.9 m	22' 8"	16090 kg	35470 lbs	
8.6 m	28' 3"	12910 kg	28460 lbs	
10.5 m	34' 5"	10620 kg	23410 lbs	

max.		40000 kg	88180 lbs	D
4.2 m	13' 9"	25820 kg	56920 lbs	
5.3 m	17' 5"	20500 kg	45190 lbs	
6.9 m	22' 8"	15680 kg	34570 lbs	
8.6 m	28' 3"	12500 kg	27560 lbs	
10.5 m	34' 5"	10180 kg	22440 lbs	
12.4 m	43' 0"	8690 kg	19160 lbs	

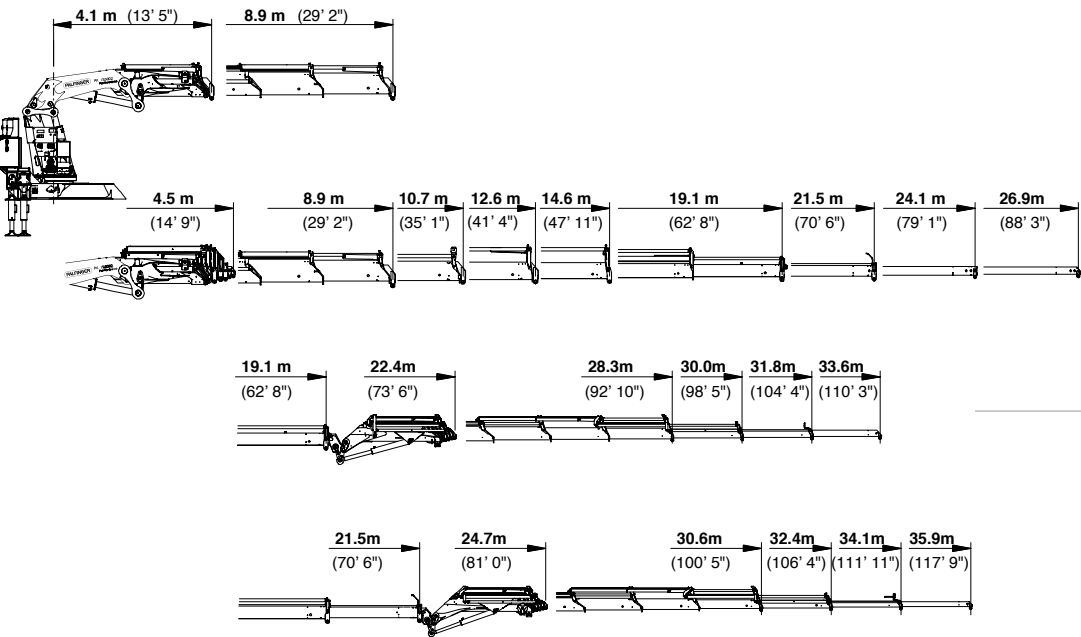
max.		40000 kg	88180 lbs	E
4.2 m	13' 9"	25520 kg	56260 lbs	
5.3 m	17' 5"	20170 kg	44470 lbs	
6.9 m	22' 8"	15320 kg	33770 lbs	
8.6 m	28' 3"	12120 kg	26720 lbs	
10.5 m	34' 5"	9900 kg	21830 lbs	
12.4 m	43' 0"	8240 kg	18170 lbs	
14.3 m	46' 11"	7140 kg	15740 lbs	
16.5 m*	64' 0"	5990 kg	13210 lbs	
18.9 m*	62' 0"	5050 kg	11130 lbs	

max.		40000 kg	88180 lbs	G
4.2 m	13' 9"	25060 kg	55250 lbs	
5.3 m	17' 5"	19650 kg	43320 lbs	
6.9 m	22' 8"	14730 kg	32470 lbs	
8.6 m	28' 3"	11480 kg	25310 lbs	
10.5 m	34' 5"	9130 kg	20130 lbs	
12.4 m	43' 0"	7540 kg	16620 lbs	
14.3 m	46' 11"	6420 kg	14150 lbs	
16.6 m	54' 6"	5460 kg	12040 lbs	
18.8 m	61' 8"	4800 kg	10580 lbs	
21.2 m*	64' 0"	4090 kg	9020 lbs	
23.9 m*	78' 5"	3150 kg	6940 lbs	

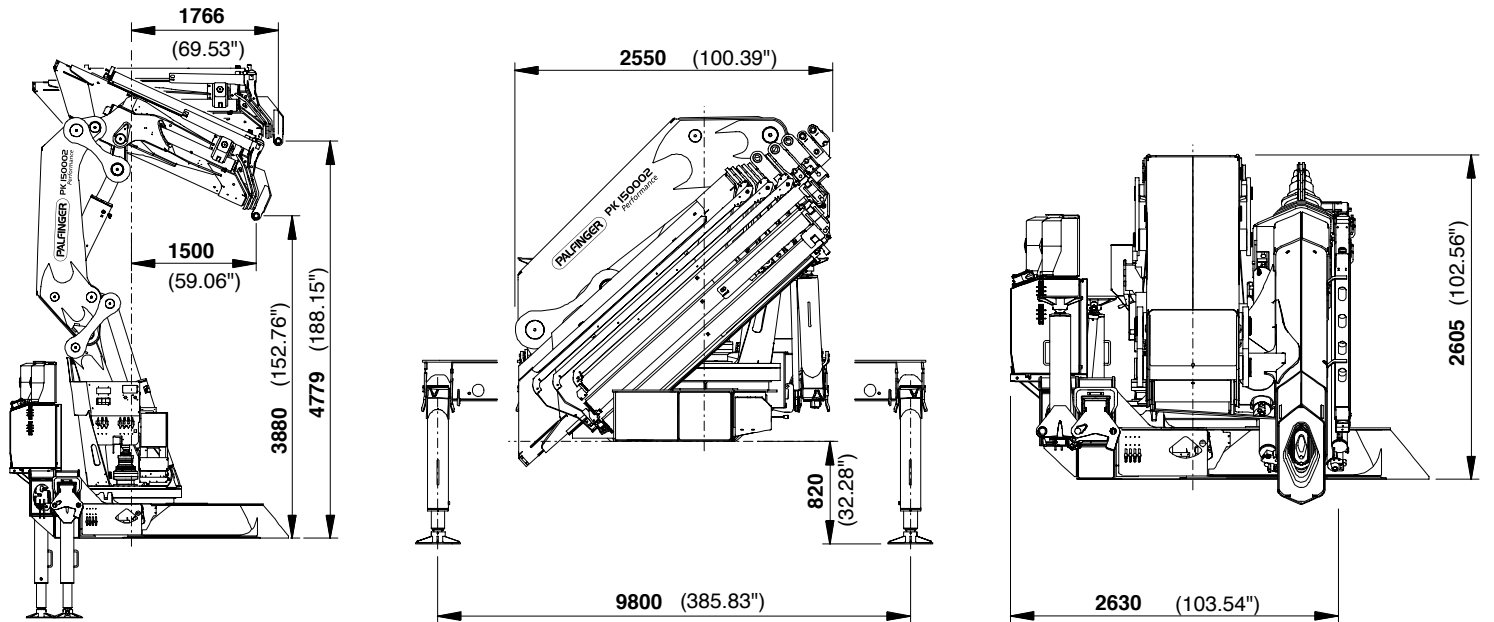
max.		40000 kg	88180 lbs	H
4.2 m	13' 9"	24800 kg	54670 lbs	
5.3 m	17' 5"	19480 kg	42950 lbs	
6.9 m	22' 8"	14520 kg	32010 lbs	
8.6 m	28' 3"	11250 kg	24800 lbs	
10.5 m	34' 5"	8870 kg	19550 lbs	
12.4 m	40' 8"	7270 kg	16030 lbs	
14.3 m	46' 11"	6140 kg	13540 lbs	
16.6 m	54' 6"	5170 kg	11400 lbs	
18.8 m	61' 8"	4500 kg	9920 lbs	
21.2 m	69' 7"	3980 kg	8770 lbs	
23.9 m*	78' 5"	3000 kg	6610 lbs	
26.6 m*	87' 3"	2200 kg	4850 lbs	

PERFECT DIMENSIONS

EXTENSION BOOM VARIATIONS



DIMENSIONS



Technical specifications

EN 12999 H1-B3

PK 150002

Max. lifting moment	116.8 mt/1146.0 kNm	844940 ft.lbs
Max. lifting capacity	40000 kg/392.4 kN	88180 lbs
Max. hydraulic outreach	21.5 m	70' 6"
Max. manual outreach	26.9 m	88' 3"
Max. outreach (with fly-jib)	36.0 m	118' 1"
Slewing angle	endless	
Slewing torque	12.0 mt/118.0 kNm	87000 ft.lbs
Outreach	8.9 m	29' 2"
Stabilizer spread standard	9.8 m	32' 2"
Fitting space required	min. 2.63 m / 8' 8"	max. 2.79 m / 9'
Width folded	2.55 m	8' 4"
Max. operating pressure	330 bar	4785 psi
Recommended pump capacity with RC- and LS-system	100 l/min	26.4 US gal./min
Dead weight standard crane	11330 kg	24980 lbs

PK 150002G PJ 170E

PK 150002H PJ 125E

Advanced Package

- 2 oil coolers installed
- HPLS
- Capacity display on control console
- Radio control
- PALTRONIC 50



KP-PK150002M4+EN

Cranes shown in the leaflet are partially optional equipped and do not always correspond to the standard version. Country-specific regulations must be observed. Dimensions may vary. Subject to technical changes, errors and translation mistakes.