

**PALFINGER**  
**SOLUTIONS**  
**WORLDWIDE**

**LIFETIME EXCELLENCE**







# THE COMPANY PALFINGER

**Established in 1932** and headquartered in Bergheim (Austria) the company has for many years been among the leading international manufacturers of innovative, reliable and efficient hydraulic lifting systems in the line of commercial vehicles and in the maritime field.

PALFINGER is the **global market leader** for:

- loader cranes
- timber and recycling cranes
- marine cranes
- wind cranes
- hooklifts and railway systems

Moreover, the Company is a **leading specialist** in:

- tail lifts
- truck mounted forklifts.

PALFINGER has manufacturing and assembly sites in Europe, in North and South America and Asia as well as over 5,000 sales and service centres located in over 130 countries across all continents.

With its approx. 11,000 employees, PALFINGER has generated total sales of approx. EUR 1,616 million in 2018. The three strategic pillars – innovation, internationalization and flexibility – have facilitated the global, profitable growth of the PALFINGER Group in previous years and will be consistently pursued in the future as well.

To allow for a prioritization of the challenges and opportunities of digital transformation, this time-tested strategy has been supplemented by a fourth pillar: PALFINGER 21st stands for new core competences, new approaches, new products, services and business models in the digital age.

PALFINGER's employees and the shared values of respect, learning and entrepreneurship are central elements in the implementation of this vision. PALFINGER will put its customers at the heart of all endeavours, even more so than in the past. Together with them, PALFINGER will continue to identify new requirements and develop efficient solutions.

## PROJECT ENGINEERING

At PALFINGER we want to ensure that our lifting solutions deliver their promised performance at the highest possible security level. The entire system consisting of the PALFINGER lifting solution truck, subframe and hydraulic system is decisive. For this reason, PALFINGER offers the mounting software **pacwin.NET**



## WARRANTY

PALFINGER lifting solutions are quality products. Therefore we guarantee maximum cost-effectiveness through three different warranty terms from 12 to 36 months. If you are interested in detail, please get in touch with your PALFINGER contact person.

3 YEARS  
**PALFINGER**  
WARRANTY

## SPARE PARTS SUPPLY

PALFINGER has original spare parts, which are tested under hard conditions to prove our quality promise. Furthermore several partners worldwide guarantee a seamless supply of the original PALFINGER spare parts. Even 10 years after the production of certain products was stopped, the availability of spare parts is still given. Through our partner standards, our general representatives can assure the quality as well. Every day, 20,000 spare parts leave the warehouse – that's 120,000 parcels a year. And sometimes when it has to go fast, even an over night transport is possible.



## SERVICE & TECHNICAL SUPPORT

With approximately 5,000 sales and services bases around the world, PALFINGER provides an **high level service network**. For this dense network of manufacturers, general representatives and service partners, we have developed a comprehensive **certification structure**. One part of it is the **PALFINGER University/Pal-U**, with 400,000 training hours and 2,700 participants every year. This ensures that every single partner within this system can help to ensure your customer satisfaction as effectively as possible.



← TOGETHER WE ARE SHAPING THE FUTURE OF OUR CUSTOMERS' LIFTING SOLUTIONS



YOUR PALFINGER SERVICE PARTNER IS ALWAYS CLOSE BY...

[www.palfinger.com/en/sales-service-search](http://www.palfinger.com/en/sales-service-search)





# TURNKEY SOLUTIONS

## One unit – one partner – lots of possibilities

PALFINGER offers more than only premium quality lifting solutions. The global market leader in lifting solutions offers at different production sites an outstanding mounting competence. There our products and the vehicle become one unit to reach the optimum performance. More than 800 complete crane and hookloader installations for example have been built on trucks only at the MCC Lengau, Austria, since 2012.

Flexibility is the key. We offer eight centers in Europe so far, which could offer different setups of mounting and have enough capacity to support with a lot of expertise. They are situated in Austria, France, Spain, Poland, Italy, Germany.





# LOADER CRANES



PALFINGER loader cranes are available between 1 and 150 mt and help to load as well as unload trucks or other vehicles. They are designed to work in rough conditions for off road applications. The ideal ratio between deadweight and lifting power and at the same time the cost-effectiveness and high user-friendliness make them to a successful working tool.

They are also perfectly adaptable to your special working environments like general cargo, construction and car recovery for example. Especially various equipment like a rope winch, rotator, gripper or crane fork expands the loading crane's field of application much more.



# ELEMENTS THAT CONVINC

## COATING TECHNOLOGY

The KTL coating lays the foundation for a perfect surface protection. Afterwards the components are either coated in the powder-coating facility or are finished with a two-components-top-coat. High value retention and excellent corrosion protection for the whole life of a crane.



## SINGLE LINK

The linkage system improves the crane's motion geometry significantly for more power on the hook.



## HIGH SPEED EXTENSION

The extension boom system gets speeded up by the high speed extension. Your loader crane will work faster and more efficiently as without it.



## OVERLOAD PROTECTION

When the load limits are reached, it would be good to have a hydraulic or electronic overload protection. For a safe crane operation the optional overload protection function stops all movements that further increase the lifting moment.



# ELEMENTS THAT CONVINC



## RADIO REMOTE CONTROL

With the optional radio remote control it is easy to operate the crane nearly from every point it is necessary. So the best overview through the load is given and the comfort is on a maximum base. The PALFINGER radio remote controls are equipped with linear levers or cross levers. This depends on the preferences of the operator.



## ROPE WINCH

To extend the potential range of applications, a rope winch is available as an option. The winch is available from 0.8 up to 4.5 tonnes. If required, it can be fitted with an extension stop and a limit switch for better performance and safety.

**Recommended for:**  
construction, general cargo, container,  
heavy duty handling, recycling/waste management



## PALTRONIC

With the Paltronic, PALFINGER offers the latest control electronics for the series production crane. The custom designed electronic operates and monitors the crane and offers more efficiency in use and safety. In total it is more comfortable.



## HOSE EQUIPMENT FOR ATTACHMENTS

For more versatility you can order your loader crane with hose equipment. The hose equipment, like a grab or rotator, is guided in hose trays for protection. Connecting auxiliary equipment is much more easier and faster. This saves time and money.

**Recommended for:**  
construction, grab applications, brick and further  
construction-material handling



## TOP SEAT

A top seat guarantees fast operations with a maximum overview for the best comfort. It is available in a 2-lever pilot control or a linear lever control.

**Recommended for:**  
brick handling, construction material-handling



## PALFINGER MOUNTING ACCESSORIES

PALFINGER mounting accessories is a one-stop service. It means to us, that you can get everything you need for your mounting project from PALFINGER - fast, simple and perfectly matched. We want to ensure that our lifting solutions deliver their promised performance at the highest possible security level. Therefore the entire system consisting of crane, truck, subframe and hydraulic system is decisive.



## HIGH STAND

The high stand is for perfect ergonomic operations. The levers on the control console are very well positioned to increase working convenience.

**Recommended for:**  
brick handling, construction material-handling,  
recycling/waste management





# OUR TOP-SELLERS

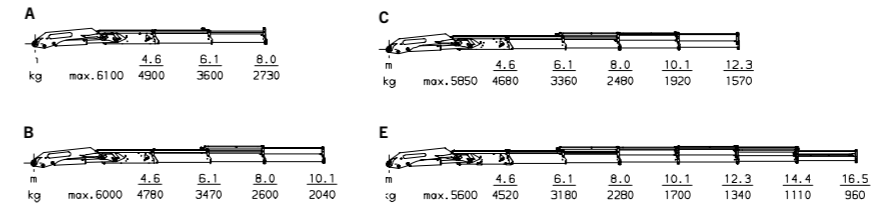


PALFINGER offers a wide bunch of cranes in the light, medium and heavy range. Which crane suits you best, depends on your specific needs. So if you need more than our top-sellers, which are mentioned afterwards, do not hesitate to contact your local sales and service partner for an offer:

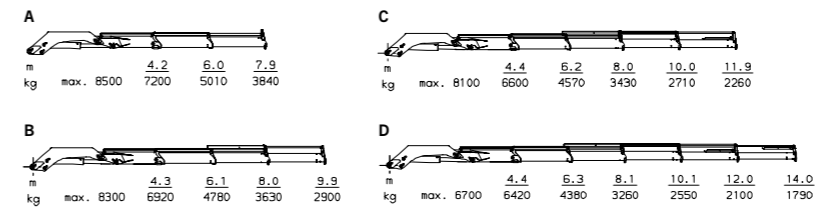
[www.palfinger.com/en/sales-service-search](http://www.palfinger.com/en/sales-service-search)



## PK 23500 PERFORMANCE

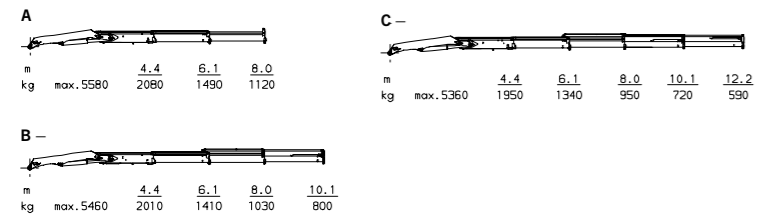


## PK 32080 PERFORMANCE



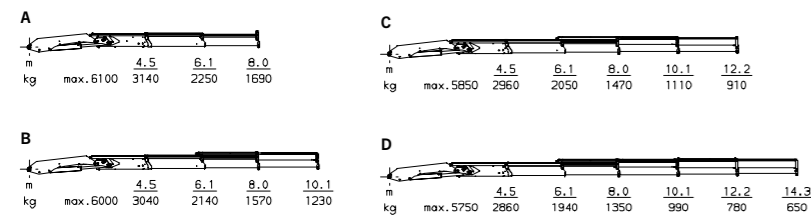
## LIGHT CRANE RANGE

### PK 10000 PERFORMANCE



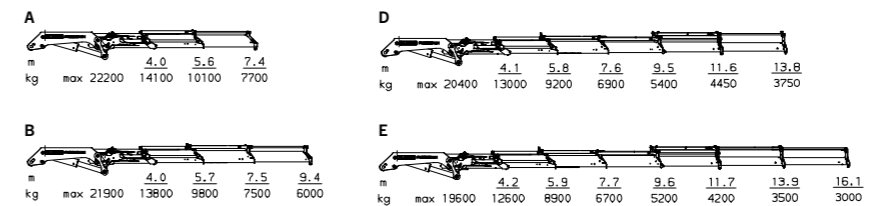
## MEDIUM CRANE RANGE

### PK 15500 PERFORMANCE

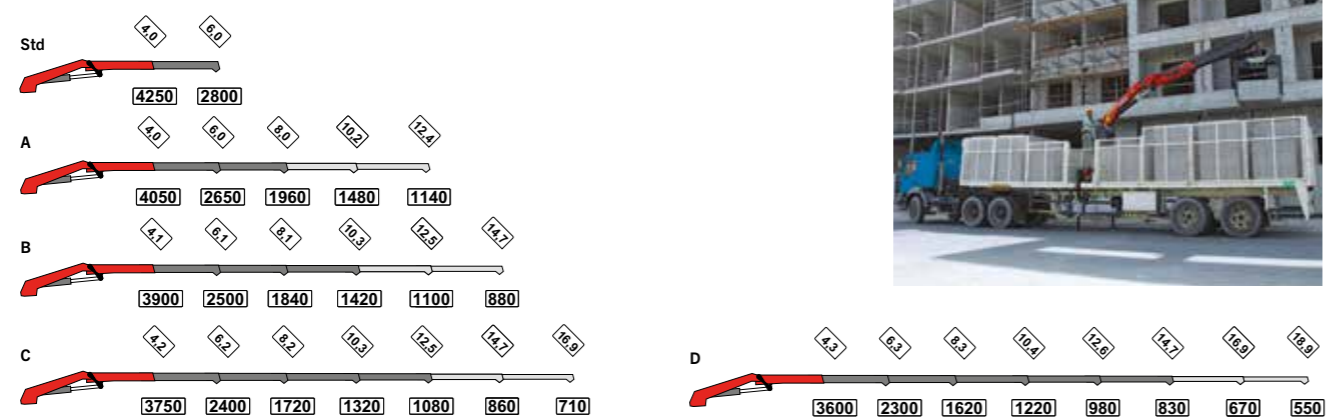


## HEAVY CRANE RANGE

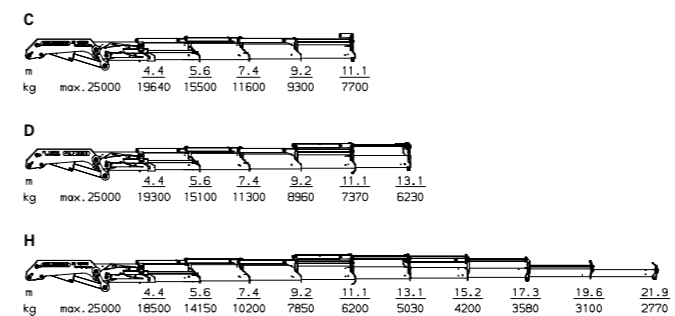
### PK 62002 EH HIGH PERFORMANCE



### PK 17.001 SLD 1 PERFORMANCE



### PK 100002 PERFORMANCE





# PALFINGER TOOLS



Whether hydraulically or mechanically, PALFINGER offers you a comprehensive range of additional equipment to make the loader crane a flexible and versatile tool for several applications. To ensure your working success, we only offer PALFINGER proven applications. Another plus is, that you get everything from one hand.

#### Our top-seller tools for your multi-use crane:

- crane fork
- digging grapple
- workman-basket
- high volume clamshell bucket
- brick stack grapples
- barrier lifter
- pole manipulator
- car lifting devices
- poly grab
- earth auger
- rotator





# HOKLOADERS



PALFINGER hookloaders are built for rough and extreme conditions. The structure is perfectly adapted for heavy-duty trucks. Hookloaders are the key to enormous flexibility and efficiency. The most important industries are: recycling, waste management, construction, agriculture and logistic.

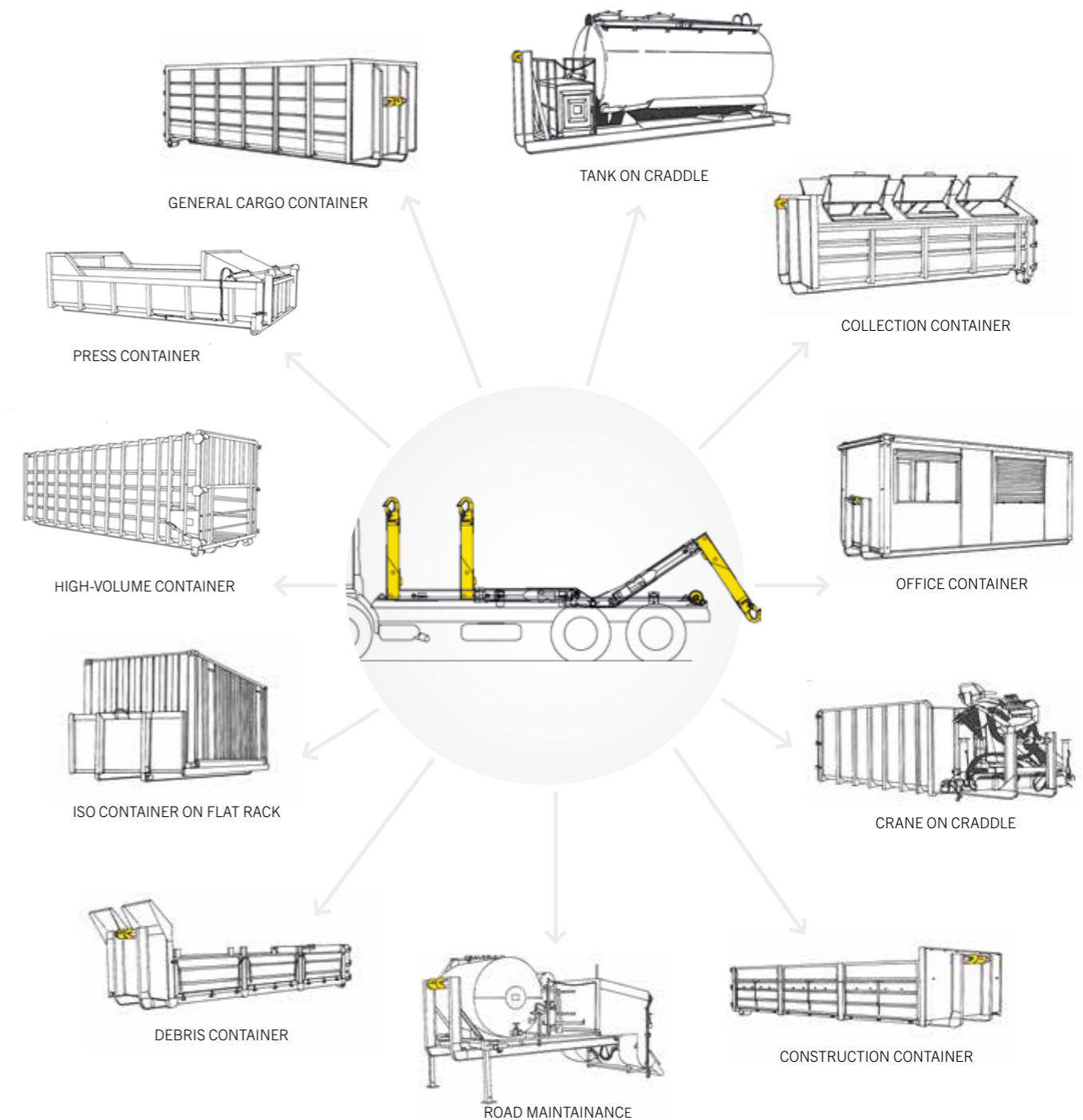
food and transport logistics, waste management, emergency services and local authorities as well as leasing and rental business.



# ONE TRUCK FITS ALL

Use one truck for many applications. Simply choose the right container for your need.

- Low investment = 1 truck for 10 different containers/ applications
- Save annual truck taxes, registration costs, maintenance costs
- Significantly lower additional costs for container bodies





# ELEMENTS THAT CONVINC



## CONTAINER LOCKING



Safe and strong container transport thanks to hydraulic container locking. Particularly adapted for various containers length Operated by the driver with the cab control.

## PNEUMATICAL CONTROL SYSTEM



Reliable and proven control system for rough conditions. Easy maintenance and user friendly

## POP - PALFINGER ORIGIN PROTECTION



Increased lifetime: all parts are sand blasted, degreased, primer painted and electrostatically final coated according to ISO 12944 in the classes between 3 and 15 years.

## LONGEVITY



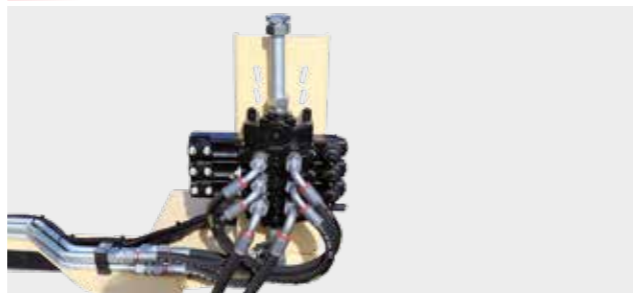
Casted parts provide longevity and robustness (hook, rear pivots, hinge supports, container supports, etc.). They increase product lifetime and resale value

## LOW MAINTENANCE



HD-range is designed with oversized components and proved technology to be maintain easily at every bodybuilder or truck workshop.

## VERTICAL MAIN VALVE



Vertical main valve option give an higher protection against Off Road projections.

## VERSATILE

PALFINGER HD (Heavy Duty) hookloader allow loading, unloading and tipping of all types of containers (volumes, lengths, etc.). Telescopic HD can be used in many sectors of application such as waste management, public works, agriculture and humanitarian organisations.



## ROBUST

HD-range is specially designed to work in rough conditions for off-road applications on heavy duty trucks. It is perfectly adapted to high loading rates.



## ALL CHASSIS BODYBUILDING

Heavy Duty Hookloaders are easily fittable on all chassis even the longest.



## A WIDE RANGE FITS TO ALL NEEDS

HL	Container mini [mm]	Container maxi [mm]	Volume Container maxi [m³]
T12HDPI	3200	5200	26
T16HDPI	3400	5400	27
T20HDPI	4200	6600	30
T24HDPI	4200	6600	30
T28HDPI	4400	7000	35
G30 / G35	5000	12000	65



# SKIPLOADERS



PALFINGER skiploaders are built for tough conditions. They are adapted to various containers capacity and size. The robust design, almost infinite versatility and best reliability characterize this PALFINGER lifting solution.

Construction, logistic systems, waste management and mining logistic management are the most important businesses for it.

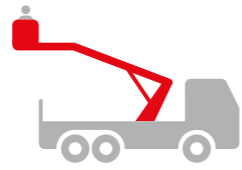


# ELEMENTS THAT CONVINC

<p><b>MANUAL CONTROL</b></p>	<p><b>PISTON ROD PROTECTION</b></p>	<p><b>TELESCOPIC ARM</b></p>
<p><b>CONTAINER STOPS</b></p>	<p><b>TOP CROSSBEAM</b></p>	<p><b>REAR STABILISER</b></p>
<p><b>CHAINS SHORTENER</b></p>	<p><b>TIPPING CHAINS</b></p>	<p><b>EASY ACCESS</b></p>



# ACCESS PLATFORMS



PALFINGER access platforms are reaching working heights of between 10 m and 103 m for chassis weighing between 3.5 t and 60 t. Outstanding performance data and strong innovations have repeatedly set new standards in the market. PALFINGER access platforms are thus optimally adjusted to the relevant working range.

The most important industries include leasing and rental business, local authorities, landscaping/gardening, energy supply and cleaning of structures, buildings and large machines as well as the maintenance and repair of wind turbines.



# ELEMENTS THAT CONVINC

## CONVENIENT STABILIZER SYSTEM

The automatic support leveling feature from PALFINGER allows the vehicle to be stabilized quickly and easily. The control buttons mounted on the right and left sides at the rear of the vehicle allow the greatest possible field of the view into the support area, thus also improving safety.



## KTL COATING

The KTL coating lays the foundation for a perfect surface protection. Afterwards the components are either coated in the powder-coating facility or are finished with a two-components-top-coat. High value retention and excellent corrosion protection for the whole life of a platform.



## GRAPHIC CONTROL PANEL

All functions are easily operated using the control panel. An easy-to-understand, image-based display intuitively guides the user through the menu.



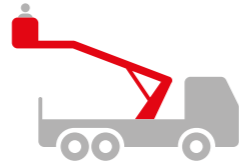
## HOME FUNCTION

The PALFINGER home function enables the access platform to be folded quickly and easily.





# PALFINGER ETI PLATFORMS



ETI manufactures aerial lift trucks for telecommunications, electrical utility, energy, industrial, and other professionals. For more than two decades ETI has grown their business by waking up every day to a single core philosophy: serving the customer. ETI sticks by their trucks from cradle to grave.

They handle parts, service, training, inspections, and warranty issues. They deliver better 50'-and-under lift trucks because they build every part of them they possibly can. Truck bodies and booms. Insulated and non-insulated. Fiberglass and steel.



# ELEMENTS THAT CONVINC

## STABILIZATION – WITH AND WITHOUT OUTRIGGERS

Stability of aerial units can be maintained with and without outriggers depending on size of unit.



## POWDER COATING OF AERIAL COMPONENTS

Powder Coating gives consumers, businesses and industries one of the most economical, longest lasting, and most color-durable quality finishes available on virtually any type of metal. Powder coated surfaces are more resistant to chipping, scratching, fading, and wearing than other finishes.



## SIMPLISTIC UNIT CONTROLS

All units are controlled by very simple hydraulic valves. There for having very low tech easily controlled units. Very low maintenance.





# EPSILON RECYCLING CRANES



Our innovative, high-tech and easy-to-service cranes are the professional answer to any problem – tailor-made for every application in recycling and construction and efficient throughout their entire life cycles. EPSILON cranes from PALFINGER are characterized by a very robust design as well as finely controllable yet extremely fast movements that make daily work easier and more efficient.

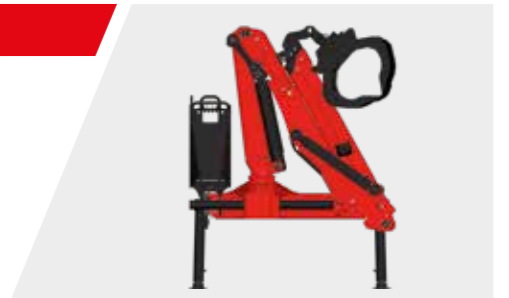
- Internal hose guidance protects the hoses against damages.
- Confirms to DIN 15018/B5 (EN 13001/S4)
- Available with different control options (stand-up, top-seats and remote controlled)
- Perfect hook clearance for container handling



# ELEMENTS THAT CONVINC

## TIPPER & TRIPLE CRANE CONCEPTS

These constructions offer great advantages in the geometry as well as the compactness when folded across the truck (Z-cranes with 400l clamshell bucket are foldable to 2.55m vehicle width). With the patented “Easy Fold” folding assistance the folding of Z-cranes is as easy as never before.



## ROBUST DESIGN EN 13001/S4

ALL PALFINGER EPSILON Cranes correspond to EN 13001/S4. Therefore, these cranes are designed for heavy usage in interval and multi-shift operation with 4-8h/day, many repetitions and dynamic load changes.



## EPSLINK

This patented link-rotator combination with an internal hose guide offers maximum protection during work for the hoses between the crane and grab. This reduces the damage of hoses significantly, even when the boom is used for handling scrap.



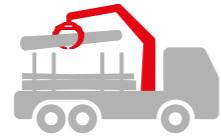
## EPSCOPE

The patented extension boom system with a protected, internal hose guide and internal telescopic cylinder enables you to work safely without the risk of mechanical damage to hoses on the outer boom. In addition, the reversed linkage allows a much longer reach.





# EPSILON TIMBER CRANES



Handling and felling timber demands a great deal from people and machinery. Operators are expected to concentrate hard and work on the limit in any weather. The tough design, finely tuned controls and array of solutions unique to EPSILON are intended to make work easier and more efficient.

The main defining features of EPSILON cranes for timber manipulation are their robust workmanship and above-average lifting and slewing capacities.



# ELEMENTS THAT CONVINC

## EPSLINK

This patented link-rotator combination with an internal hose guide offers maximum protection during work for the hoses between the crane and grab. This reduces the damage of hoses significantly, even when the boom is used for handling scrap.



## EPSCOPE

The patented extension boom system with a protected, internal hose guide and internal telescopic cylinder enables you to work safely without the risk of mechanical damage to hoses on the outer boom. In addition, the reversed linkage allows a much longer reach.



## COATING TECHNOLOGY

The KTL coating lays the foundation for perfect surface protection. Afterwards the components are either coated in the powder-coating facility or are finished with a two-components top coat. High value retention and excellent corrosion protection for the whole life of a crane.



## STRONG LINKAGE SYSTEM

Steady force and constant boom speed in the whole operating area. Extraordinary lifting power especially in the upper working areas and very close to the crane.



## HIGH QUALITY TIMBER GRABS

All EPSILON timber grabs come equipped with the latest sealing technology and ample bearing surfaces. Moreover, adjustable bolts and bronze bushings are used to prevent bearing play and ensure that the grab remains a precise tool even after years of operation.





# TRUCK MOUNTED FORKLIFTS



Mounted on the rear of a carrier vehicle or in a protective box between the axles, the PALFINGER truck mounted forklift means complete independence as additional unloading devices are not required. PALFINGER truck mounted forklifts offer safety and longevity as well as a high level of operator comfort and optimum manoeuvrability.

PALFINGER is committed to top performance in many fields of application and throughout the entire product lifecycle. The truck mounted forklifts by PALFINGER are adaptable to every surface and are available also in a offroad version for rough conditions. The most important industries are transport and beverage logistics, recycling and building material applications, technical and medical gases, agriculture and the live event sector.



# TAIL LIFTS



Tail lifts make it much easier to safely load and unload trucks and are synonymous with cost efficiency, flexibility and a high level of operating comfort for users. With more than 40 products, PALFINGER caters for weight classes between 500 kg and 4,000 kg. The service network with

blanket coverage guarantees unrestricted and optimum service for each and every customer. The most important fields of application include: food and transport logistics, waste management, emergency services and local authorities as well as leasing and rental business.





# LIFTING SOLUTIONS AT SEA



As a global partner for innovative and reliable deck equipment and lifesaving appliances, PALFINGER supplies high-quality products to fulfil standardised and customised demands. Supported worldwide by a network of experienced and skilled specialists, we provide flexible and efficient service solutions.

Our portfolio gives a competitive edge for customers in the maritime and offshore industry. PALFINGER provides lifting and handling solutions to all major maritime segments, including offshore, marine, cruise, navy and coast guard and wind.



# BOATS AND DAVITS



## LIFE-, RESCUE- AND TENDER-BOATS

With a wide range of high-end solutions for the offshore and shipping industry, the product range covers life-, rescue- and tender boats.



## PROFESSIONAL BOATS

With a specialisation in designing and manufacturing special boats, PALFINGER offers not only firefighting boats, but also daughter crafts, workboats as well as military and law enforcement boats.



## DAVITS

PALFINGER davits are innovative, user-friendly and intended for long-term, reliable operation in harsh and hazardous marine and offshore environments. These systems are easy to install, durable, maintenance-friendly and ensure safety when it matters most.



## FENDERS

PALFINGER offers worldwide a competitive package of fenders and fender davits. The unique design is the best solution for safe and (cost-) efficient handling of fenders.





# DECK EQUIPMENT



## MARINE CRANE - MARINE APPLICATION

Due to the compact design, the foldable knuckle boom cranes can be easily accommodated at any vessel type, especially where space is limited. Foldable knuckle boom cranes are used for service vessels, workboats or cruise vessels to load and unload provision, cargo, tools and equipment.



## MARINE CRANE - OFFSHORE APPLICATION

Knuckle boom cranes are designed to lift high loads with extended jib and provide the operator with great flexibility during lifting operations. The improved level of control makes the crane ideal for offshore lifting operations on rigs, platforms or offshore vessels in higher sea states.



## OFFSHORE CRANE

PALFINGER delivers Active Heave Compensated offshore cranes ranging from smaller models for Service Operation Vessel to larger models for subsea lifts. All cranes are tailor-made to meet customer requirements and can be delivered in various configurations. The AHC system is developed for the harsh offshore environment.



## WINCHES

Throughout the years an extensive range of winches in addition to advanced winch systems for offshore vessels, offshore service vessels, special vessels and oil rigs has been developed. PALFINGER has throughout the years developed an extensive range of winches in addition to advanced winch systems for offshore vessels, offshore service vessels, special vessels and oil rigs.



# DECK EQUIPMENT AND SERVICE



## LIFTING AND HANDLING EQUIPMENT

PALFINGER offers special lifting and handling equipment including skidding and handling modules, different kinds of launch and recovery systems, onshore and special equipment.



## SLIPWAY SYSTEMS

Innovative, customized and reliable slipway and stern entry systems – the range covers systems with quad or single wheel drive units and boat cradle.



## SERVICE

As a leading manufacturer of innovative and reliable deck and lifesaving equipment with an impressive global portfolio of 25+ brands, PALFINGER is committed to flexible and efficient service solutions.

Operating in all major segments, the company owns a network of 25 PALFINGER sales and service hubs all over the world. This ensures fast and professional on-site support for customers in all major ports.



**YOUR PALFINGER SERVICE PARTNER IS ALWAYS CLOSE BY...**

[www.palfingermarine.com/en/sales-service-search](http://www.palfingermarine.com/en/sales-service-search)









