

PALFINGER

PALFINGER GLS 55 TRUCK MOUNTED FORKLIFT

LIFETIME EXCELLENCE



REINVENTED

re-in-vent-ed | rēin-vent-ed
: to bring back; revive

THE TRUCK MOUNTED FORKLIFT REINVENTED

As a global industry leader of the most innovative, reliable and efficient lifting, loading and handling solutions for use on commercial vehicles, PALFINGER recognized an increased demand from their customers for truck mounted forklifts, which give the added capability to directly deliver products on and around their customers' job sites.

This growing market demand has led PALFINGER to invest in a clean sheet design and development of a new range of truck mounted forklifts.

The result has been a truck mounted forklift with so many new features, innovations and patents that it permits us to say that we have truly reinvented the truck mounted forklift.

MEET THE NEW PALFINGER GLS 55 TRUCK MOUNTED FORKLIFT

RE·ENVISIONED for form and function

RE·ENGINEERED for safety and ergonomics

RE·DESIGNED for operator comfort and visibility

RE·POWERED for top performance



PALFINGER



RE ENVISIONED

re-en-vi-sioned | rē-en-vi-zhend
: to see something in a new or broader perspective

The all-new version of the PALFINGER GLS 55 has enough styling differences to make it look unlike any other truck mounted forklift.

The **exterior** has a striking, sleek look with its higher ground clearance and lower profile, signature PALFINGER red panels, powder-coated grey chassis, and 45° rear corners.

Inside, there's increased legroom and operator space, a swivel seat with integrated side guard for easy entry and exit, digital dashboard and deluxe Milsco seating.

When seated, the **breakthrough panoramic visibility** must truly be seen to be believed.

SIDE VIEW (Left)

Contemporary Styling

Contemporary angular styling with 45° corners offer a sleek look that matches today's commercial vehicles



Integrated Side Guard

3-Point Entry and Exit

Ergonomically arranged steps and grab handles for ease of entry and exit

Ground Level Diesel Fuel Fill

Located within arms reach for easy ground level refueling when the forklift is either **on the ground** or **when mounted on a truck**

SIDE VIEW (Right)

Spacious Ergonomic Operator Cabin

Rubber mounted to reduce vibration and increase operator comfort



Rigidly Mounted Radiator Panel

Robust steel construction for added impact protection

Main Frame Side Pods

Provide structural rigidity as well as a clean overall look

LIFETIME EXCELLENCE

FRONT VIEW

Low Profile Engine Hood

A lower mounted engine enables a reduced hood height which greatly increases right-hand side visibility.

LED Work Lights

Front Street Lighting Kit



REAR VIEW

ROPS and FOPS Tested and Approved Overhead Guard

Strobe Light

Folding SMV Sign

Rear Street Lighting Kit



Rear Steering

A ring gear and flat face slew bearing driven by a hydraulic motor provides equal-input hydraulic power steering for smooth operation with a 180° rear-arm turning arc

Main Frame Design

45° rear corners minimize turning radius and extend beyond the inset body panels protecting them from impact

Main Frame Channels



The rolled steel main frame channels are large size Standard 4 section. This sturdy main frame channel enables the use of large diameter and wider mast carriage rollers that reduce channel loading and wear.

Carriage Cylinders



Carriage cylinders are located and recessed below the mast carriage contributing to a lower machine center of gravity along with giving protection from damage and abrasion caused by falling product debris.

Corrosion Resistance and Guarding

- **Composite** body panels
- **KTL-treated** and **powder painted** chassis
- **Galvanized** steps, telescopic stabilizers, wheel motor guards, transport chain hanger brackets to withstand the rigors of everyday use
- **Dacrotized** mast chains
- **Zinc-coated** mast and chain rollers
- Wheel rim valve stem guards
- Protruding wrap-around chassis

GROUND CONTROL™

The PALFINGER Ground Control system allows operators to mount and dismount the forklift from a truck or trailer in less than 60 seconds **without having to climb on board**.



Ground Control

Once started, operators use three (3) ground level electro-hydraulic switches located on the side-mounted control panel to tilt, extend and lower the machine through the dismount sequence. By eliminating operator slip and strain hazards of climbing on and off a truck mounted forklift, PALFINGER's ground control system has raised the standards in operator safety.

FROM THE GROUND...



**Retract and Stow
the Suzie Cable**



Start the Engine
With the ground level
ignition key



Relax the Transport Chains
with the touch of a button



**Unpin and Stow the
Transport Chains**

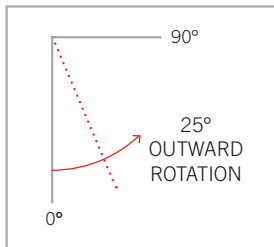


Lower the Lift and Go

Use the three switches to TILT, EXTEND and LOWER the machine to the ground

SWIVEL SEAT

25° OUTWARD SWIVEL FOR EASE OF ENTRY/EXIT



The operator seat assembly features a swivel seat for ease of entry/exit and improved visibility.

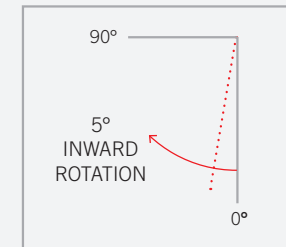


Rotating the operator seat 25° outward dramatically increases the cab's entry and exit grid.



The 5° inward seat position reduces body movement and neck strain when travelling in reverse along with increasing the operator's rear view field of vision.

5° INWARD SEAT POSITION FOR IMPROVED 360° VISIBILITY



REDESIGNED

re·de·signed | rē-di-zīnd
: to revise in appearance, form, or function to improve efficiency

OPERATOR CABIN

The spacious ergonomically designed Operator Cabin is rubber mounted to reduce vibration & increase operator comfort.



INSIDE THE CAB



Digital Display and
Easy Reach Control Levers
with Arm Rest



Conveniently located
IP68-Rated Weather Resistant
Control Switches



Ergonomically Arranged
Foot Pedals with Ample
Floor Space



All-Weather, Tinted
Overhead Guard Cover



Deluxe Milsco® Seat
with High Visibility Seat Belt
and Integrated Side Guard

VISIBILITY – SEEING MORE THAN EVER BEFORE

PALFINGER's panoramic visibility sets a new standard in operator visibility and safety. Class III fork boards with a wide Class IV opening and lift cylinders positioned behind the mast uprights gives way to an unprecedented forward field of vision. Seeing the fork tips has never been easier.



Travelling Empty



Travelling with a Cube Load



REPOWERED

re·pow·ered | rē-pau-red
: to provide increased power and performance

TO OUTPERFORM

In consideration of performance reduction due to today's Tier 4 engines, a Poclain® high pressure hydrostatic drive pump and high capacity gear pump have been specified to compensate and surpass any performance disadvantage. Ultimately this provides operators more torque and ground speed, faster hydraulic functions and outstanding performance and handling. The PALFINGER GLS 55 is highly stable, fast, rugged and exceptionally agile. It effortlessly travels over rough terrain, up hills and across all job sites.

**PALFINGER
PERFORMANCE+
PLUS**

LIFETIME EXCELLENCE



Additional **Performance+ Plus** features include **brakes** on all three wheels for added safety and a **pump mounted differential lock** to eliminate the need for large connecting hoses and reduce hydraulic leaks.

FOR EASY ACCESS SERVICE

The quick-release, tilt-up hood and hinged rear door provide service-friendly rear access to all engine components and service points. From the front, the hydrostatic pump and integrated differential lock are easily accessible for service and maintenance.



All PALFINGER systems are of the highest industry standards. Electrical connections are IP68-rated. Hydraulic hosing is kept to a minimum with extensive use of steel hydraulic lines throughout to minimize leaks.

SERVICE POINTS

Under the Hood

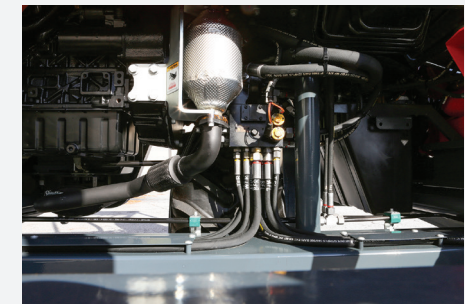
Oil Filter
Fuel Filter
Engine Coolant Fill
Air Cleaner & Filter
Steel Radiator Fan Cowling
Battery and Isolator Switch

Behind the Door

Hydraulic Oil Filter & Filler Cap

From the Front

Pump Mounted Differential Lock

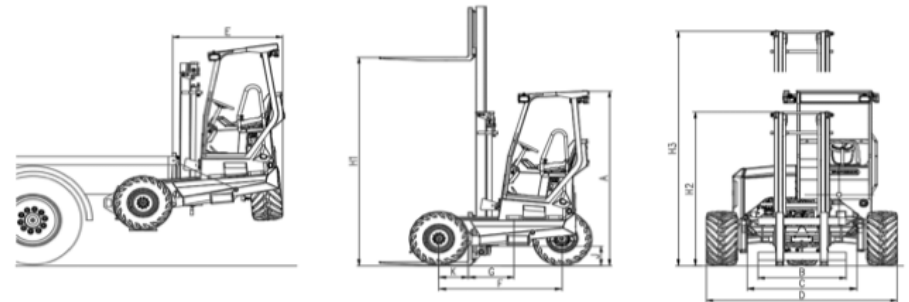


TECHNICAL SPECIFICATIONS

TMF GLS 55 STANDARD

	GLS55 STANDARD
1 CAPACITY @ 24" LOAD CENTER	5500 lbs
2 DIESEL ENGINE	56 hp
2a ENGINE EMISSION COMPLIANCE EPA	Tier 4 Final
3 MAXIMUM ENGINE RPM	2700 rpm
4 ELECTRICAL SYSTEM	12 Volt
5 DRIVE WHEELS	3
6 STEERING	Hydrostatic
7 TIRE TYPE:	
FRONT: TRACTOR GRIP SKID STEER	31X15.5-15 8-PLY, 12-PLY
REAR: TRACTOR GRIP SKID STEER	31X15.5-15 8-PLY, 12-PLY
8 TIRE OUTSIDE DIAMETER	31"
9 TIRE WIDTH	15 1/2"
10 MAXIMUM SPEED	7 mph
11 MAXIMUM GRADABILITY	30%
12 TURNING RADIUS	76"
13 UNLADEN WEIGHT	5925 lbs 6040 lbs
14 WORKING PRESSURE FOR ATTACHMENTS	3000 psi
15 TILT OF MAST (FORWARD / BACK)	10° / 8°
16 SIDESHIFT	6"
17 FORK SECTION:	
PALLET	45" x 4" x 1 3/4"
BRICK & BLOCK	48" x 2" x 2"
LUMBER	48" x 6" x 2"
18 MAST CARRIAGE TRAVEL	31"
19 COUNTERWEIGHTS	No

	GLS55 STANDARD
A HEIGHT TO TOP OF CANOPY	101"
B FORK CARRIAGE WIDTH FORK BOARDS	47 1/4" CLASS III
C FRAME OPENING	58"
D OVERALL WIDTH	101 1/2"
E OVERHANG	60"
F WHEEL BASE	65 1/2"
G C. OF G. FROM FORK FACE	18 3/4"
H1 LIFT HEIGHT	120" 144"
H2 MAST HEIGHT COLLAPSED	88 3/4" 100 3/4"
H3 MAST HEIGHT RAISED	148 3/4" 172 3/4"
J GROUND CLEARANCE	11"
K FACE OF FORK TO CENTER OF FRONT TIRE	15"
L ANSI STANDARD	B56.14



Disclaimers:

Weights will change depending on wheel and fork options.

Weights listed do not include forks or accessories

Specifications above are not binding and may be changed by PALFINGER without advance notice.

Forklifts shown in this brochure are partially optional equipped and do not always correspond to the standard version.
Country-specific regulations must be observed. Dimensions may vary. Subject to technical changes, errors and translation mistakes.

PALFINGER USA
4151 W. State Route 18
Tiffin, OH 44883
419-448-8156

WWW.PALFINGER.COM