

**PALFINGER**

LIFETIME EXCELLENCE

# PALFINGER ON THE JOB

## PRECAST CONCRETE







LIFETIME EXCELLENCE

HOME

OVERVIEW

FEATURES

SERVICE

JOB STORY

ABOUT US

PALFINGER  
PREPARED



## YOUR RELIABLE PARTNER FOR CONCRETE HANDLING

PALFINGER offers a comprehensive range of Forming Cranes that are specifically tailored for the heavy-duty demands of forming operators. With innovative “Fly-Jib” and “Long-Boom” styles, our Forming Cranes have been proven time and time again.

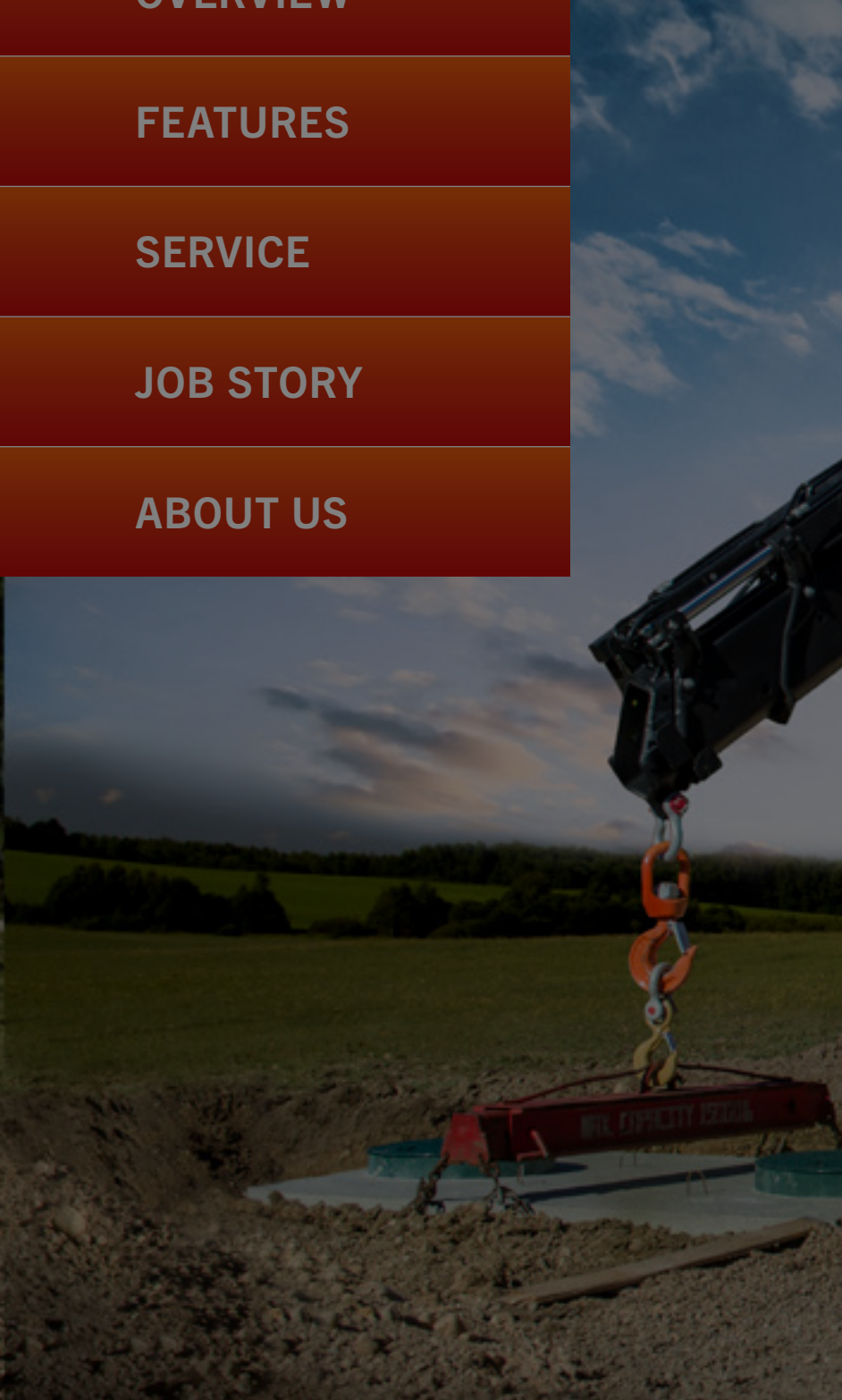


ONE PARTNER  
FOR YOUR NEEDS



**FORMING**  
PALFINGER – A STRONG PARTNER WITH THE RIGHT EQUIPMENT TO HANDLE CONCRETE FORMS AND A VARIETY OF OTHER HEAVY MATERIALS...

→ SHOW MORE







LIFETIME EXCELLENCE

# PALFINGER ON THE JOB

## PRECAST CONCRETE



| GENERAL | MID-RANGE | LARGE-RANGE | APPLICATIONS |
|---------|-----------|-------------|--------------|
|---------|-----------|-------------|--------------|

Rely on a precast concrete expert and a market leader in crane technology to add a competitive edge to your business!

PALFINGER offers some of the lightest-weight cranes in the industry. This means that they can handle the heavy weight of your precast materials and you can carry more of your product on the truck. Count on smoother, safer and more efficient crane operations with our Radio Remote Control, superior hydraulics and other features that are unique to PALFINGER.

With our diverse product offerings, industry leading power-to-weight ratios and expert installations and service from our nation-wide dealer network, depend on PALFINGER to offer the right solution for your application.

\* NPCA IS A TRADEMARK OF NATIONAL PRECAST CONCRETE ASSOCIATION AND IS USED WITH PERMISSION



PHOTO CREDIT: EAGLE BUILDERS



LIFETIME EXCELLENCE

HOME

OVERVIEW

FEATURES

SERVICE

JOB STORY

ABOUT US

# PALFINGER ON PRECAST CONCRETE

GENERAL

MID-RANGE

Rely on a precast concrete expert and a competitive edge to your business!

PALFINGER offers some of the lightest means that they can handle the heavy you can carry more of your product and more efficient crane operations with hydraulics and other features that are

With our diverse product offerings, industrial expert installations and service from our PALFINGER to offer the right solution for

\* NPCA IS A TRADEMARK OF NATIONAL PRECAST CONCRETE ASSOCIATION AND IS USED WITH PERMISSION



**“THIS CRANE IS SO SMOOTH  
AND PRECISE...”**

With my PALFINGER crane, I am confident that I can accurately set heavy loads without damaging our products. It works great!”

Mark, Crane Operator,  
Hy-Grade Precast Concrete  
St.Catharines, ON



→ SEE OUR FANS



PHOTO CREDIT: EAGLE BUILDERS

# PALFINGER ON THE JOB

## PRECAST CONCRETE



| GENERAL | MID-RANGE | LARGE-RANGE | APPLICATIONS |
|---------|-----------|-------------|--------------|
|---------|-----------|-------------|--------------|

For offloading at jobsites or direct placement in final position, our mid-range cranes are ideally suited to meet your delivery demands.

All models listed below are equipped with Radio Remote Controls, yet manually controlled styles are also available. Additional models and options are offered as well to suit your specific needs - consult with your local PALFINGER dealer!

| COMMON MODELS  | MAX. LIFTING MOMENT (FT.IBS) | GROSS ROTATION TORQUE (FT.IBS) | SLEWING RANGE | STABILIZER SPREAD | BASIC MODEL WEIGHT WITH 2 HYD-EXT (A) (LBS.) |
|----------------|------------------------------|--------------------------------|---------------|-------------------|--|
| PK 9.501 SLD5  | 65,050                       | 7,230                          | 400 °         | 18'4"             | 2,380  |
| PK 12.501 SLD5 | 82,160                       | 9,370                          | 400 °         | 18'4"             | 2,580  |
| PK 14002-EH    | 96,590                       | 11,580                         | 420 °         | 21'8"             | 3,944  |
| PK 18002-EH    | 123,870                      | 14,450                         | 420 °         | 21'8"             | 4,173  |
| PK 22002-EH    | 151,190                      | 16,640                         | 400 °         | 21'8"             | 5,271  |
| PK 26002-EH    | 179,950                      | 20,260                         | 400 °         | 21'8"             | 5,694  |
| PK 33002-EH    | 224,940                      | 23,130                         | 400 °         | 24'3"             | 6,340  |





LIFETIME EXCELLENCE

HOME

OVERVIEW

FEATURES

SERVICE

JOB STORY

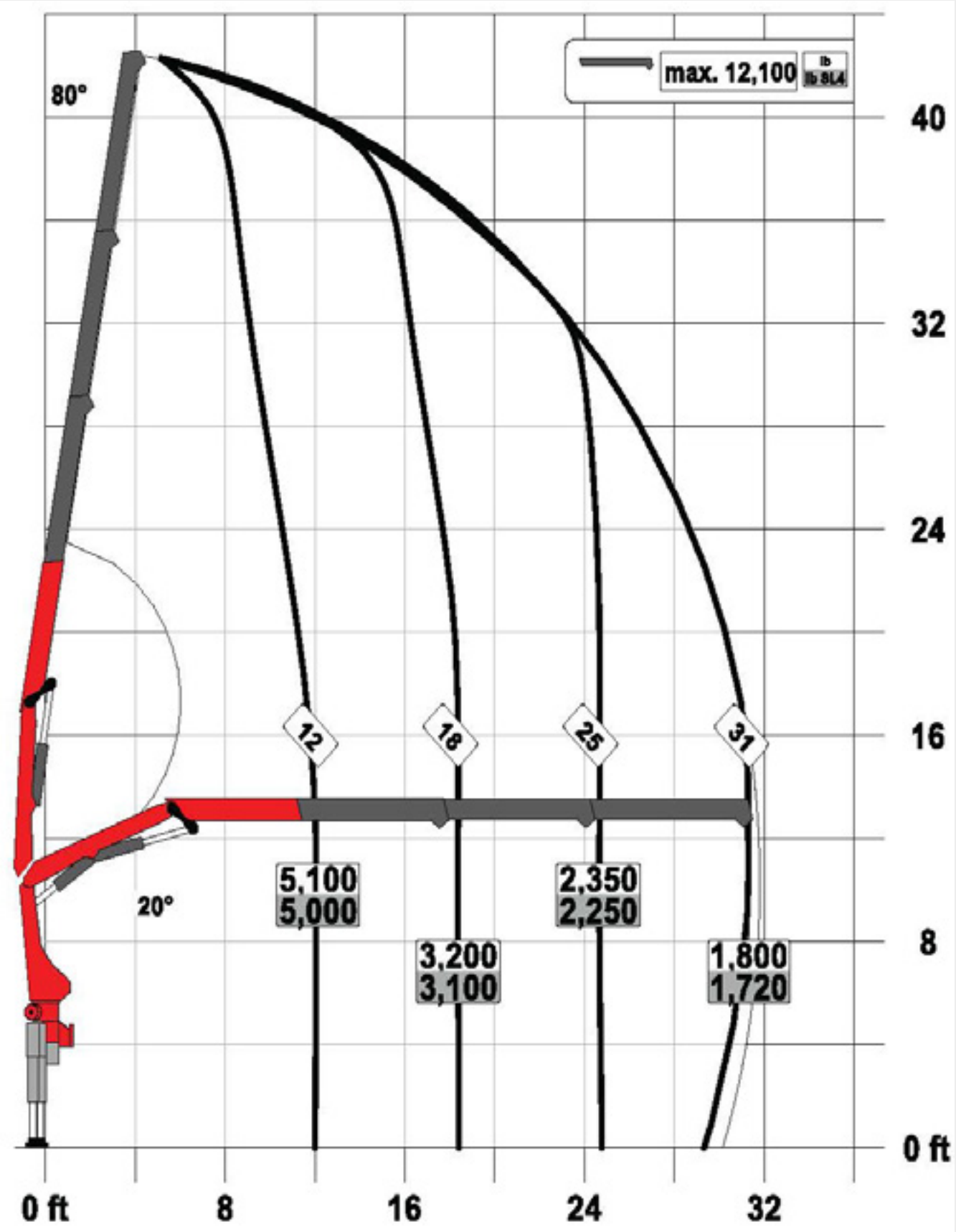
ABOUT US



→ ENGINEERING SERVICES

Dealer installations are carried out through PALFINGER engineering services to ensure optimum layout, weight distribution and stability.

# PK 9.501 SLD5



| EXTENSIONS | REACH | LIFTING CAPACITY (LBS) | CRANE WEIGHT (LBS) |
|------------|-------|------------------------|--------------------|
|------------|-------|------------------------|--------------------|

|         |        |       |       |
|---------|--------|-------|-------|
| 1 (STD) | 18'4"  | 3,650 | 2,380 |
| 2 (A)   | 24'11" | 2,550 | 2,580 |
| 3 (B)   | 31'10" | 1,800 | 2,800 |
| 4 (C)   | 38'9"  | 1,260 | 2,980 |

Load chart shown is crane with 3 hydraulic extention (B)





LIFETIME EXCELLENCE

HOME

OVERVIEW

FEATURES

SERVICE

JOB STORY

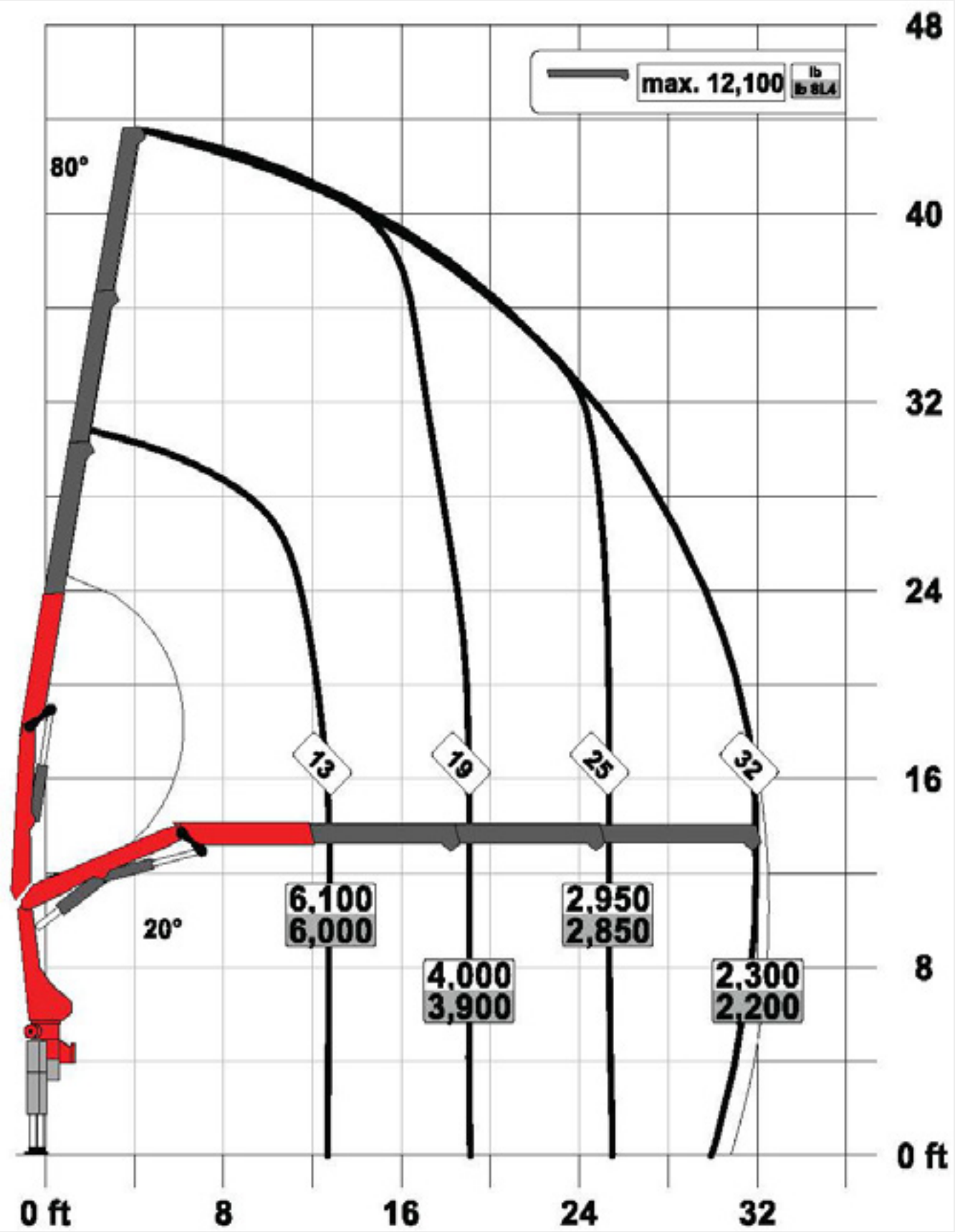
ABOUT US



→ ENGINEERING SERVICES

Dealer installations are carried out through PALFINGER engineering services to ensure optimum layout, weight distribution and stability.

# PK 12.501 SLD5



| EXTENSIONS |       | LIFTING CAPACITY (LBS) |       |
|------------|-------|------------------------|-------|
| REACH      |       | CRANE WEIGHT (LBS)     |       |
| 1 (STD)    | 19'   | 4,500                  | 2,580 |
| 2 (A)      | 25'6" | 3,150                  | 2,820 |
| 3 (B)      | 32'6" | 2,300                  | 3,040 |
| 4 (C)      | 39'6" | 1,700                  | 3,260 |

Load chart shown is crane with 3 hydraulic extensions (B)





LIFETIME EXCELLENCE

HOME

OVERVIEW

FEATURES

SERVICE

JOB STORY

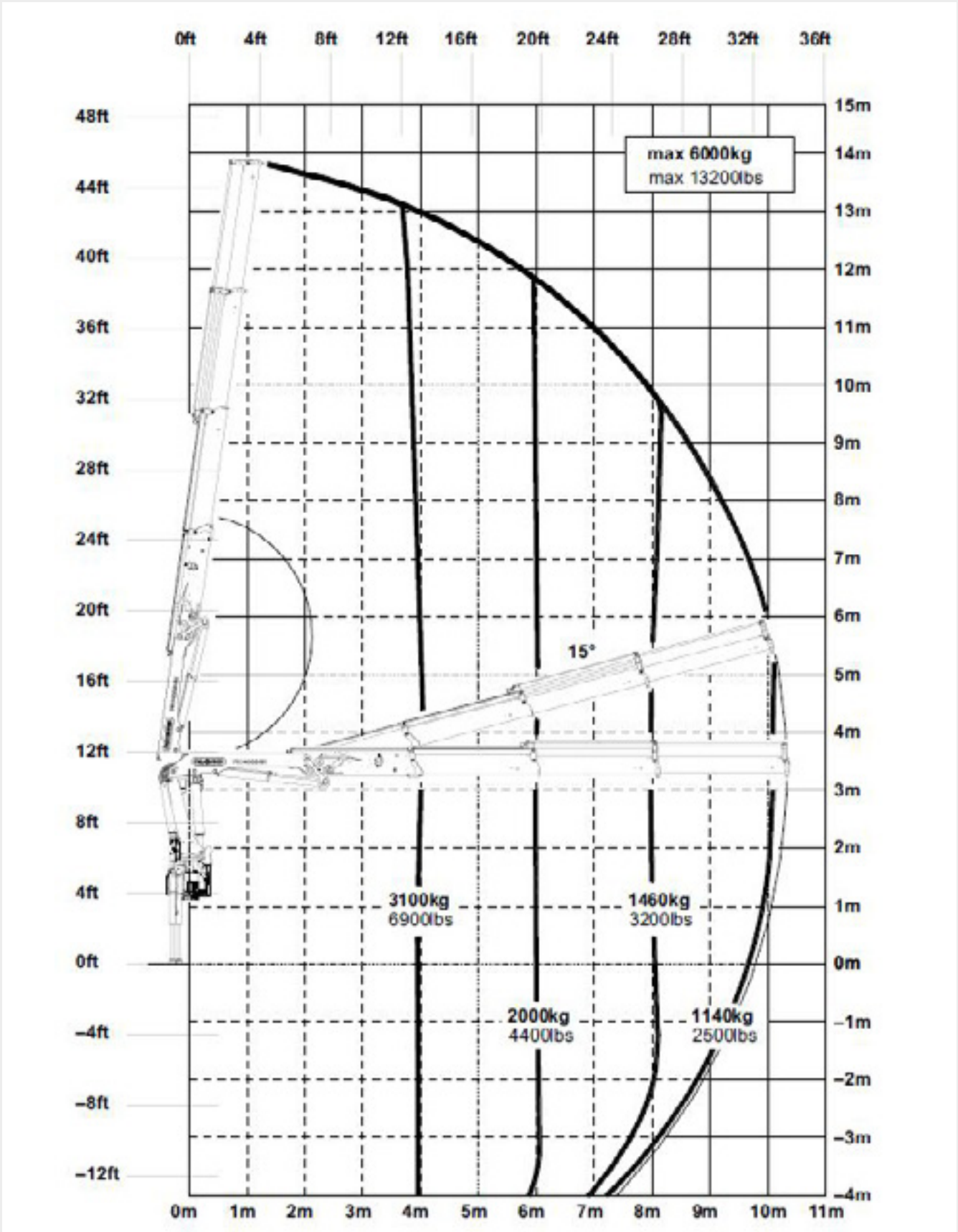
ABOUT US



→ ENGINEERING SERVICES

Dealer installations are carried out through PALFINGER engineering services to ensure optimum layout, weight distribution and stability.

PK 14002-EH



EXTENSIONS

REACH

LIFTING CAPACITY (LBS)

CRANE WEIGHT (LBS)

|       |        |       |       |
|-------|--------|-------|-------|
| 2 (A) | 26'7"  | 3,500 | 3,944 |
| 3 (B) | 33'10" | 2,500 | 4,237 |
| 4 (C) | 41'4"  | 1,840 | 4,475 |
| 5 (D) | 48'7"  | 1,380 | 4,698 |
| 6 (E) | 55'9"  | 1,000 | 4,921 |

Load chart shown is crane with 3 hydraulic extentions (B)







LIFETIME EXCELLENCE

HOME

OVERVIEW

FEATURES

SERVICE

JOB STORY

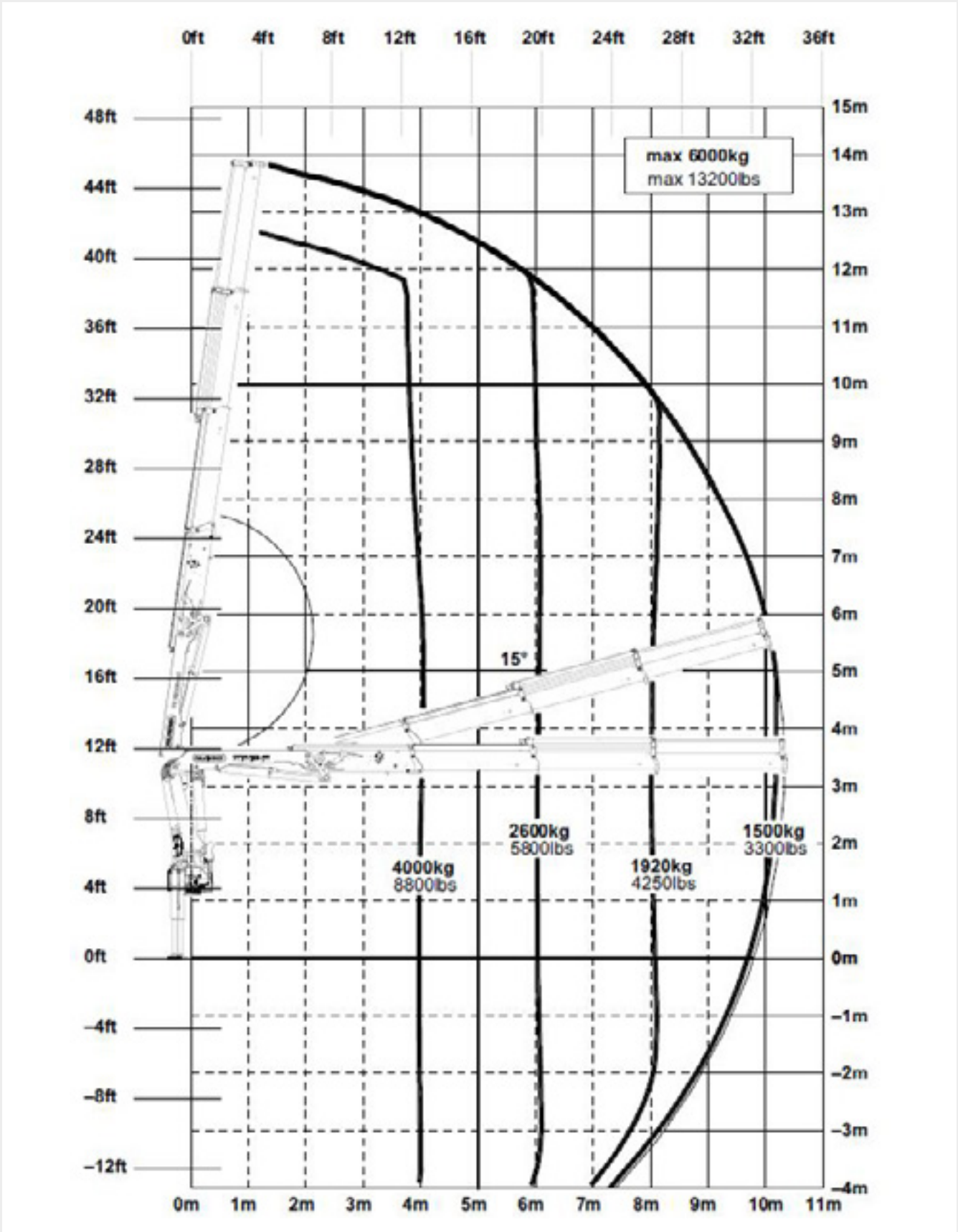
ABOUT US



→ ENGINEERING SERVICES

Dealer installations are carried out through PALFINGER engineering services to ensure optimum layout, weight distribution and stability.

# PK 18002-EH



EXTENSIONS

REACH

LIFTING CAPACITY (LBS)

CRANE WEIGHT (LBS)

|                  |        |       |       |
|------------------|--------|-------|-------|
| 2 (A)            | 26'7"  | 4,500 | 4,173 |
| <div>3 (B)</div> | 33'10" | 3,300 | 4,466 |
| 4 (C)            | 41'4"  | 2,500 | 4,733 |
| 5 (D)            | 48'7"  | 1,900 | 4,982 |
| 6 (E)            | 55'9"  | 1,440 | 5,227 |

Load chart shown is crane with 3 hydraulic extensions (B)





LIFETIME EXCELLENCE

HOME

OVERVIEW

FEATURES

SERVICE

JOB STORY

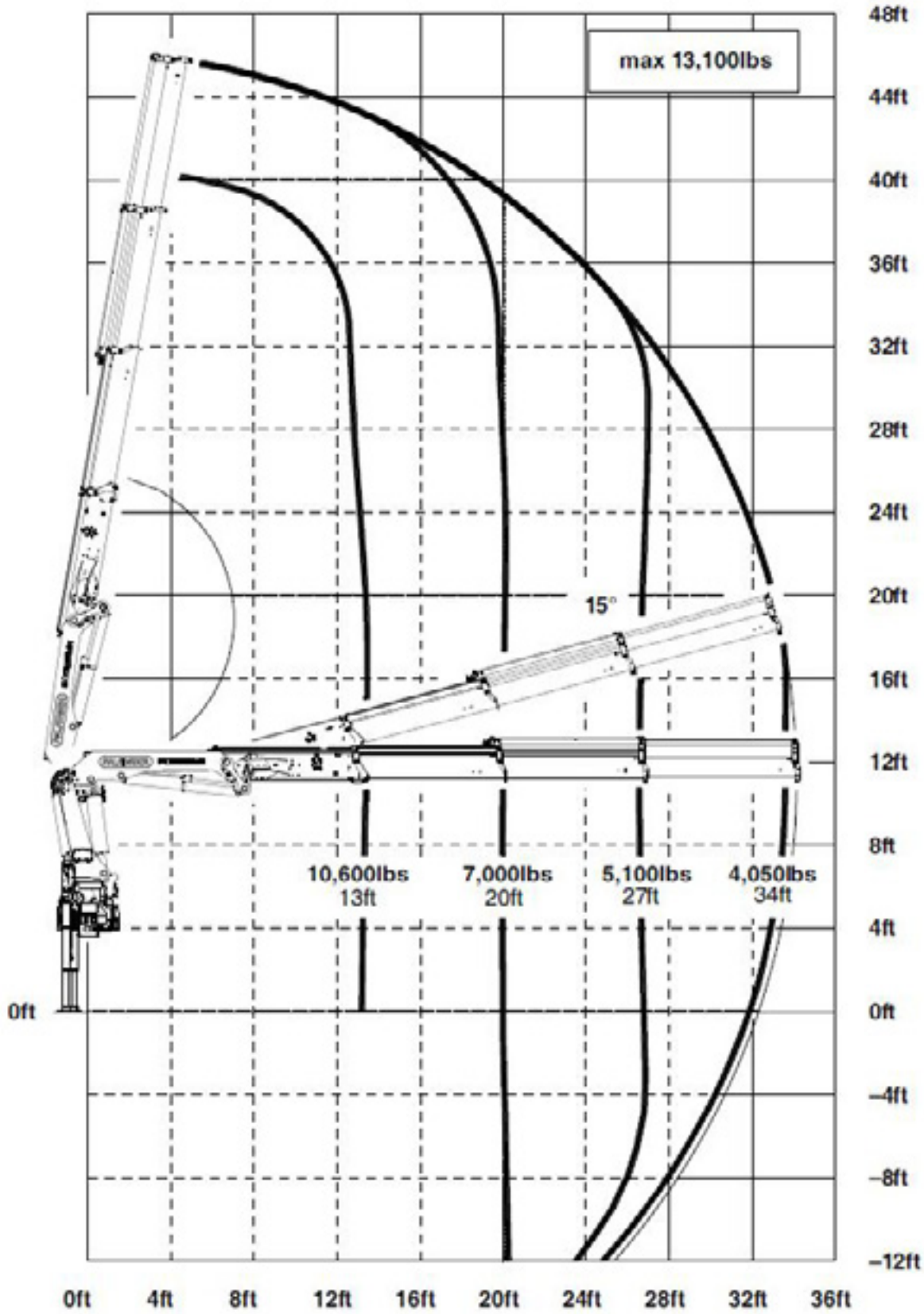
ABOUT US



→ ENGINEERING SERVICES

Dealer installations are carried out through PALFINGER engineering services to ensure optimum layout, weight distribution and stability.

# PK 22002-EH



| EXTENSIONS | REACH | LIFTING CAPACITY (LBS) | CRANE WEIGHT (LBS) |
|------------|-------|------------------------|--------------------|
|------------|-------|------------------------|--------------------|

|       |        |       |       |
|-------|--------|-------|-------|
| 2 (A) | 26'11" | 5,500 | 5,271 |
| 3 (B) | 34'10" | 4,050 | 5,642 |
| 4 (C) | 41'4"  | 3,050 | 5,939 |
| 5 (D) | 48'11" | 2,350 | 6,213 |
| 6 (E) | 56'1"  | 1,820 | 6,470 |

Load chart shown is crane with 3 hydraulic extensions (B)







LIFETIME EXCELLENCE

HOME

OVERVIEW

FEATURES

SERVICE

JOB STORY

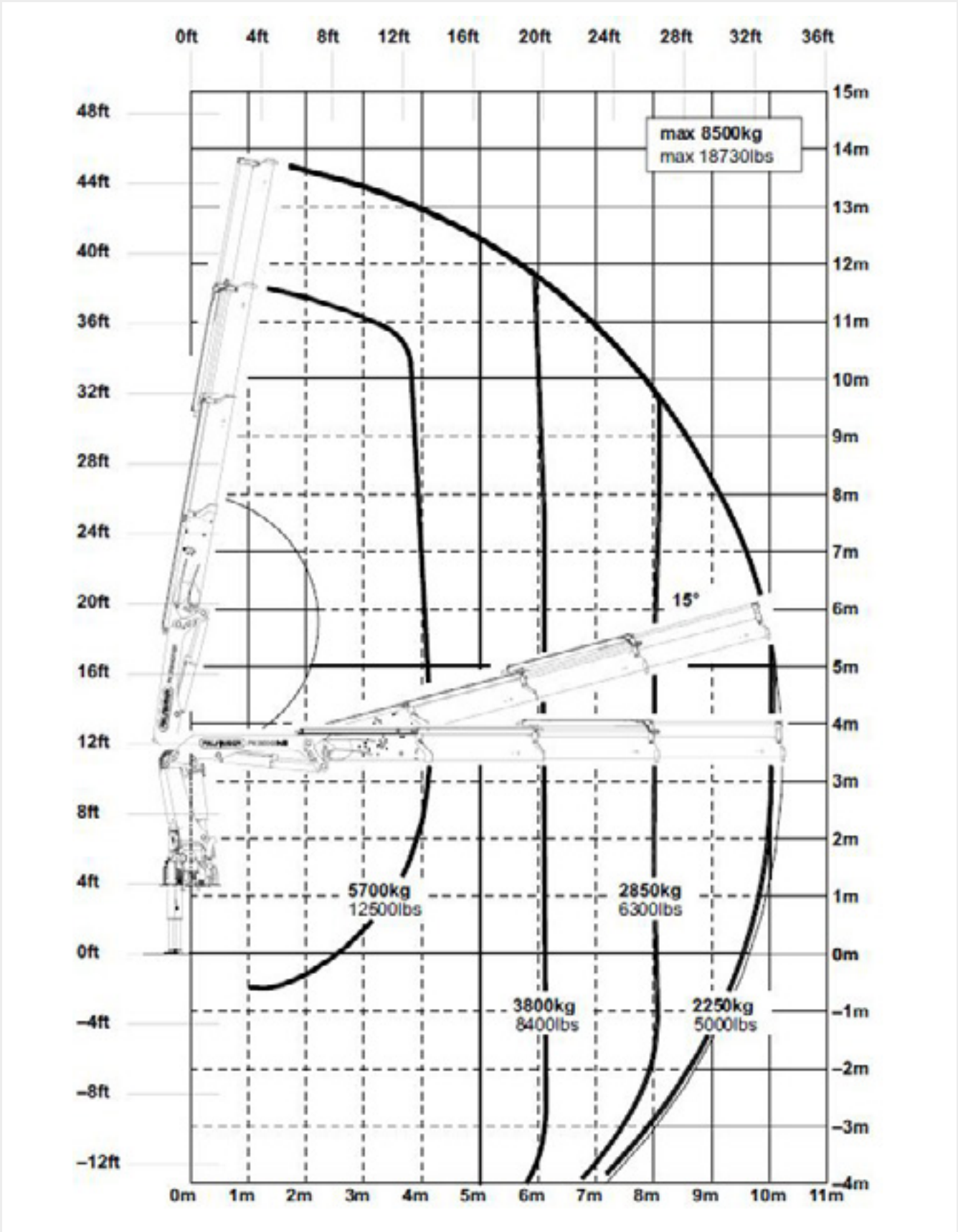
ABOUT US



→ ENGINEERING SERVICES

Dealer installations are carried out through PALFINGER engineering services to ensure optimum layout, weight distribution and stability.

# PK 26002-EH



| EXTENSIONS | REACH | LIFTING CAPACITY (LBS) | CRANE WEIGHT (LBS) |
|------------|-------|------------------------|--------------------|
|------------|-------|------------------------|--------------------|

|              |              |              |              |
|--------------|--------------|--------------|--------------|
| 2 (A)        | 26'7"        | 6,700        | 5,694        |
| <b>3 (B)</b> | <b>33'6"</b> | <b>5,000</b> | <b>6,093</b> |
| 4 (C)        | 40'8"        | 3,750        | 6,488        |
| 5 (D)        | 47'11"       | 2,850        | 6,878        |
| 6 (E)        | 55'1"        | 2,200        | 7,200        |
| 7 (F)        | 62'8"        | 1,700        | 7,449        |
| 8 (G)        | 69'11"       | 1,300        | 7,690        |

○ Load chart shown is crane with 3 hydraulic extensions (B)





LIFETIME EXCELLENCE

HOME

OVERVIEW

FEATURES

SERVICE

JOB STORY

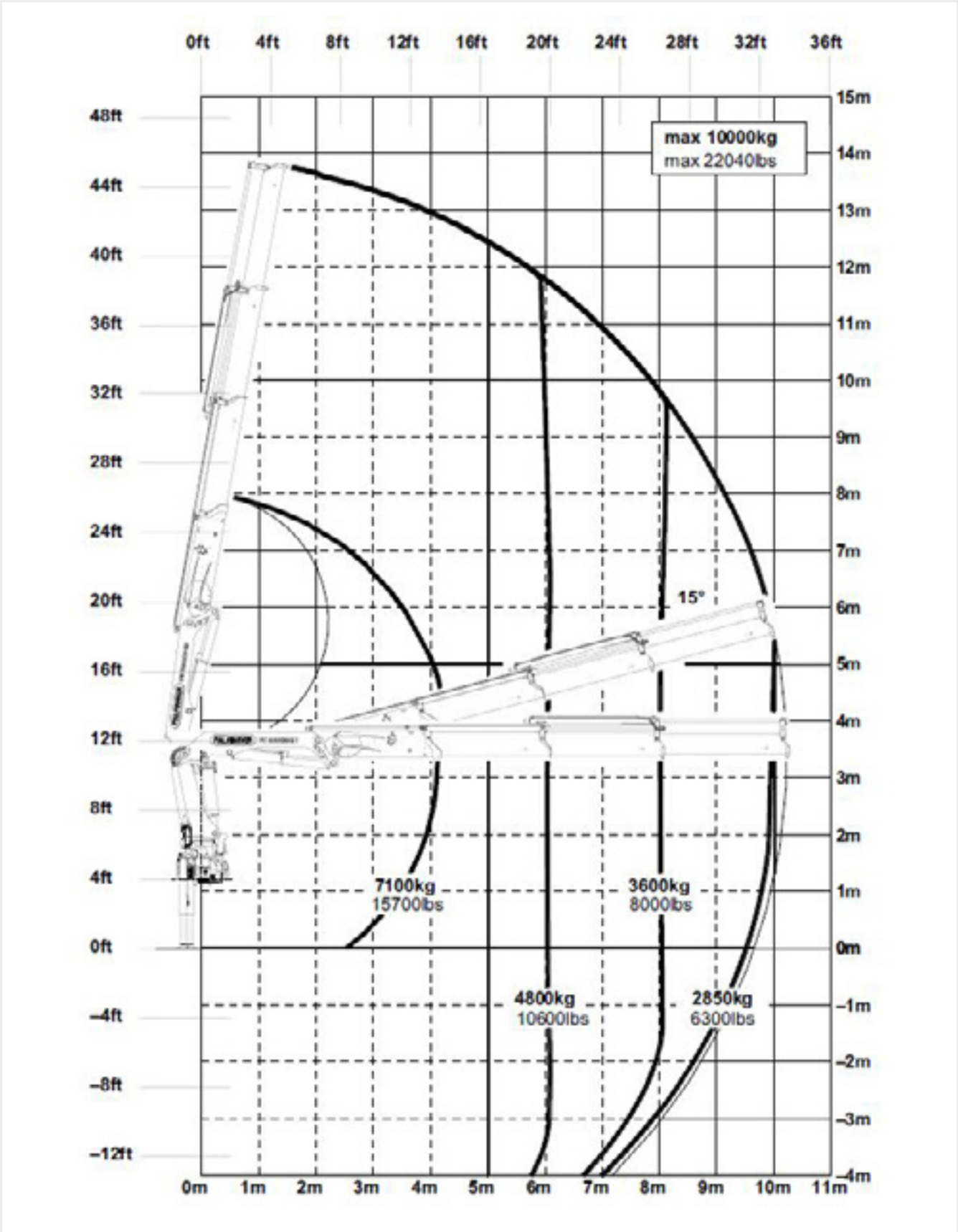
ABOUT US



→ ENGINEERING SERVICES

Dealer installations are carried out through PALFINGER engineering services to ensure optimum layout, weight distribution and stability.

# PK 33002-EH



EXTENSIONS

REACH

LIFTING CAPACITY (LBS)

CRANE WEIGHT (LBS)

|                   |        |       |       |
|-------------------|--------|-------|-------|
| 2 (A)             | 26'7"  | 8,400 | 6,340 |
| <div></div> 3 (B) | 33'6"  | 6,300 | 6,772 |
| 4 (C)             | 40'8"  | 4,750 | 7,255 |
| 5 (D)             | 47'11" | 3,700 | 7,648 |
| 6 (E)             | 55'1"  | 2,950 | 7,970 |
| 7 (F)             | 62'8"  | 2,350 | 8,219 |
| 8 (G)             | 69'11" | 1,900 | 8,459 |

Load chart shown is crane with 3 hydraulic extensions (B)







LIFETIME EXCELLENCE

HOME

OVERVIEW

FEATURES

SERVICE

JOB STORY

ABOUT US



→ ENGINEERING SERVICES

Dealer installations are carried out through PALFINGER engineering services to ensure optimum layout, weight distribution and stability.

# ENGINEERING SERVICE

**STABILITY ANALYSIS**

THIS DRAWING SHOWS THE STABILITY OF THE FINISHED TRUCK. CALCULATIONS ARE DONE WITHOUT PAYLOAD, FUEL, OR DRIVER. (WORST CASE).

NOTES:

- STABILITY RESU INFORMATION D
- ALL UNITS MUST TESTED
- RESULTS BASED DESCRIBED ON

RESULTS ARE:

- 1) P/E CHART WORKING AREA
- 2) STABILITY IF GREATER THAN SUBFRAME TYP
- 3) PAD/TBRT 1) OUTRIGGER PAD WORKING DIREC

**WEIGHT DISTRIBUTION**

THIS IS THE STREET-SIDE VIEW OF THE FINISHED UNIT. HEIGHTS AND GROUND CLEARANCES, WHEN SHOWN, ARE BASED ON A SEMI-LOADED FRAME HEIGHT.

FRONT

THE A : 9,673 L

THE MAXIMUM : 10,032 L

THE GROSS WD : 19,705 L

COMMENTS: PAYLOAD BASED O

WEIGHT DISTR. ON

HEIGHTS SHOWN ARE THEORETICAL

LOAD EQUALING WEIGHT OF 10

1) NORMAL LOADS PLUS 10% A TALL

2) LIFT AND PERFORMANCE, DEPT

3) TAILSWAY AND COLL. HEIGHT OF 4

NOTE THIS IS A VALUES NEEDED

\*IF THE TARE W WEIGHTS TAKEN OR BY SCALING

**FINAL LAYOUT**

THIS IS THE STREET-SIDE VIEW OF THE FINISHED UNIT. HEIGHTS AND GROUND CLEARANCES, WHEN SHOWN, ARE BASED ON A SEMI-LOADED FRAME HEIGHT.

**TRUCK SPECIFICATION**

THIS IS THE TRUCK INFORMATION USED IN THE FINAL LAYOUT, WEIGHT DISTRIBUTION, AND STABILITY ANALYSIS FOR THIS PROJECT. IF THE TRUCK IS ALREADY BUILT, IT MAY HAVE TO BE MODIFIED (E.G. STRETCH WHEELBASE, EXTEND FRAME RAILS) TO MATCH THIS SPECIFICATION. IF THE TRUCK HASN'T BEEN PURCHASED YET OR IF IT IS STILL 'ON PAPER', USE THIS SPECIFICATION TO HAVE THE TRUCK BUILT PROPERLY.

**PK 40002-EH B KENWORTH T880**

**PALFINGER**

CRANE / TRUCK ANALYSIS PACKAGE

DATE: 2/15

BY: M.P.

REVISION CONTROL

| REV | CHANGE                   | DATE |
|-----|--------------------------|------|
| 1   | ISSUE                    | 1/15 |
| 2   | ADD TAIL, TAIL-LIGHT AND | 1/15 |
| 3   |                          |      |



CATIONS

- ▶ LOAD CHART
- ▶ LOAD CHART
- ▶ LOAD CHART
- ▶ LOAD CHART
- ▶ LOAD CHART
- ▶ LOAD CHART

PALFINGER ON THE JOB

PRECAST CONCRETE



| GENERAL | MID-RANGE | LARGE-RANGE | APPLICATIONS |
|---------|-----------|-------------|--------------|
|---------|-----------|-------------|--------------|

Our large-range cranes offer superior handling of large precast products with their extreme lifting power combined with smooth and precise control.

All models listed below are equipped with Radio Remote Controls, yet manually controlled styles are also available. Additional models and options are offered as well to suit your specific needs - consult with your local PALFINGER dealer!

| COMMON MODELS  | MAX. LIFTING MOMENT (FT.IBS) | GROSS ROTATION TORQUE (FT.IBS) | SLEWING RANGE | STABILIZER SPREAD | BASIC MODEL WEIGHT WITH 2 HYD-EXT (A) (LBS.) |
|----------------|------------------------------|--------------------------------|---------------|-------------------|--|
| PK 35.502 TEC5 | 242,640                      | 23,900                         | continuous    | 24'3"             | 6,770  |
| PK 42002-SH    | 297,270                      | 27,510                         | continuous    | 24'3"             | 8,488  |
| PK 53002-SH    | 362,366                      | 28,910                         | continuous    | 25'7"             | 9,138  |
| PK 65002-SH    | 448,400                      | 50,640                         | continuous    | 28'3"             | 11,111                                       |
| PK 78002-SH    | 540,290                      | 50,640                         | continuous    | 28'3"             | 13,025                                       |
| PK 92002-SH    | 618,120                      | 55,710                         | continuous    | 28'3"             | 14,947                                       |





LIFETIME EXCELLENCE

HOME

OVERVIEW

FEATURES

SERVICE

JOB STORY

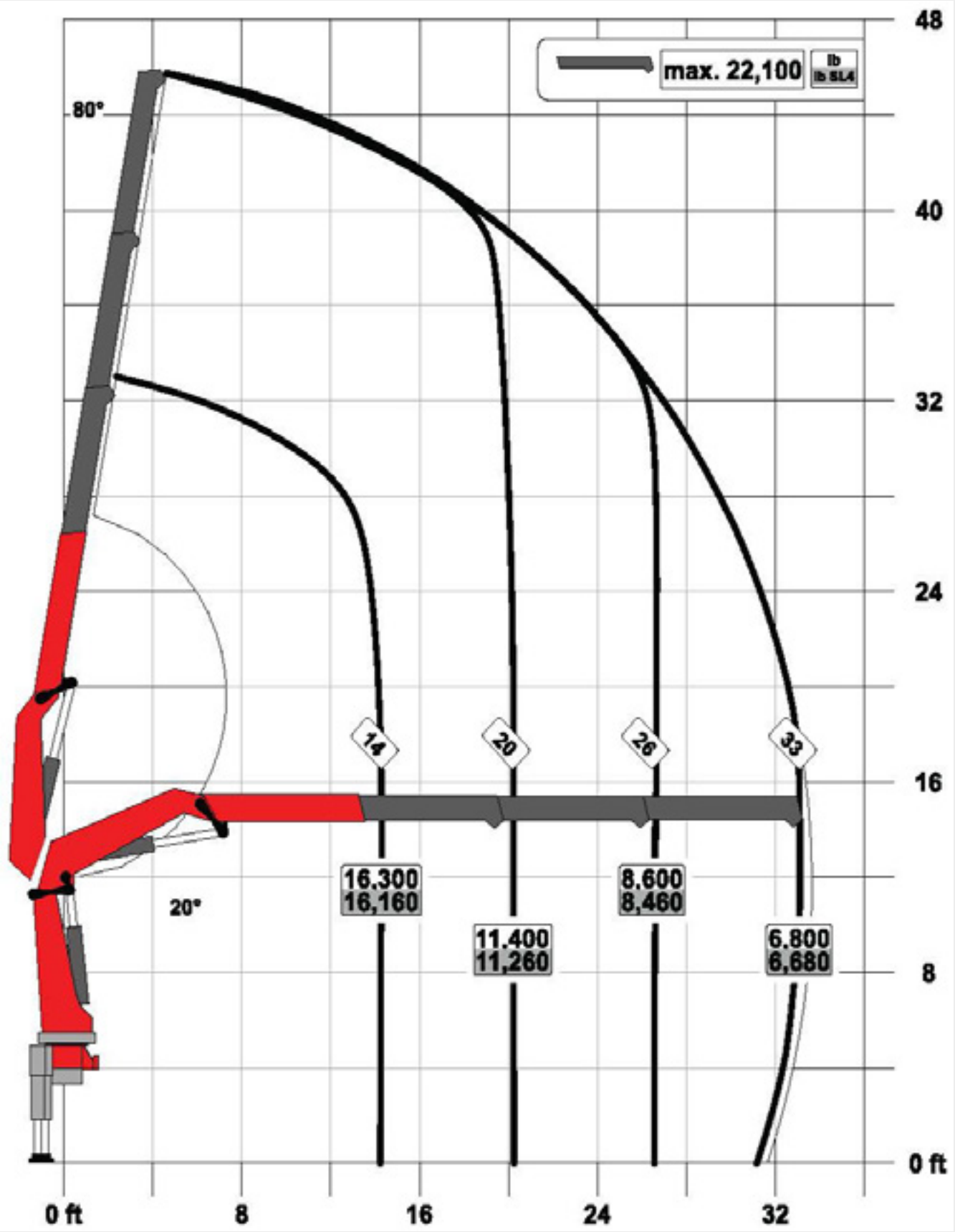
ABOUT US



→ ENGINEERING SERVICES

Dealer installations are carried out through PALFINGER engineering services to ensure optimum layout, weight distribution and stability.

PK 35.502 TEC5



| EXTENSIONS | REACH | LIFTING CAPACITY (LBS) | CRANE WEIGHT (LBS) |
|------------|-------|------------------------|--------------------|
|------------|-------|------------------------|--------------------|

|              |               |              |              |
|--------------|---------------|--------------|--------------|
| 2 (A)        | 26'7"         | 9,000        | 6,770        |
| <b>3 (B)</b> | <b>33'10"</b> | <b>6,800</b> | <b>7,190</b> |
| 4 (C)        | 40'           | 5,300        | 7,610        |
| 5 (D)        | 48'3"         | 4,100        | 8,160        |
| 6 (E)        | 56'1"         | 3,200        | 8,540        |
| 7 (F)        | 63'12"        | 2,500        | 8,920        |
| 8 (G)        | 71'6"         | 2,000        | 9,170        |

○ Load chart shown is crane with 3 hydraulic extensions (B)





LIFETIME EXCELLENCE

HOME

OVERVIEW

FEATURES

SERVICE

JOB STORY

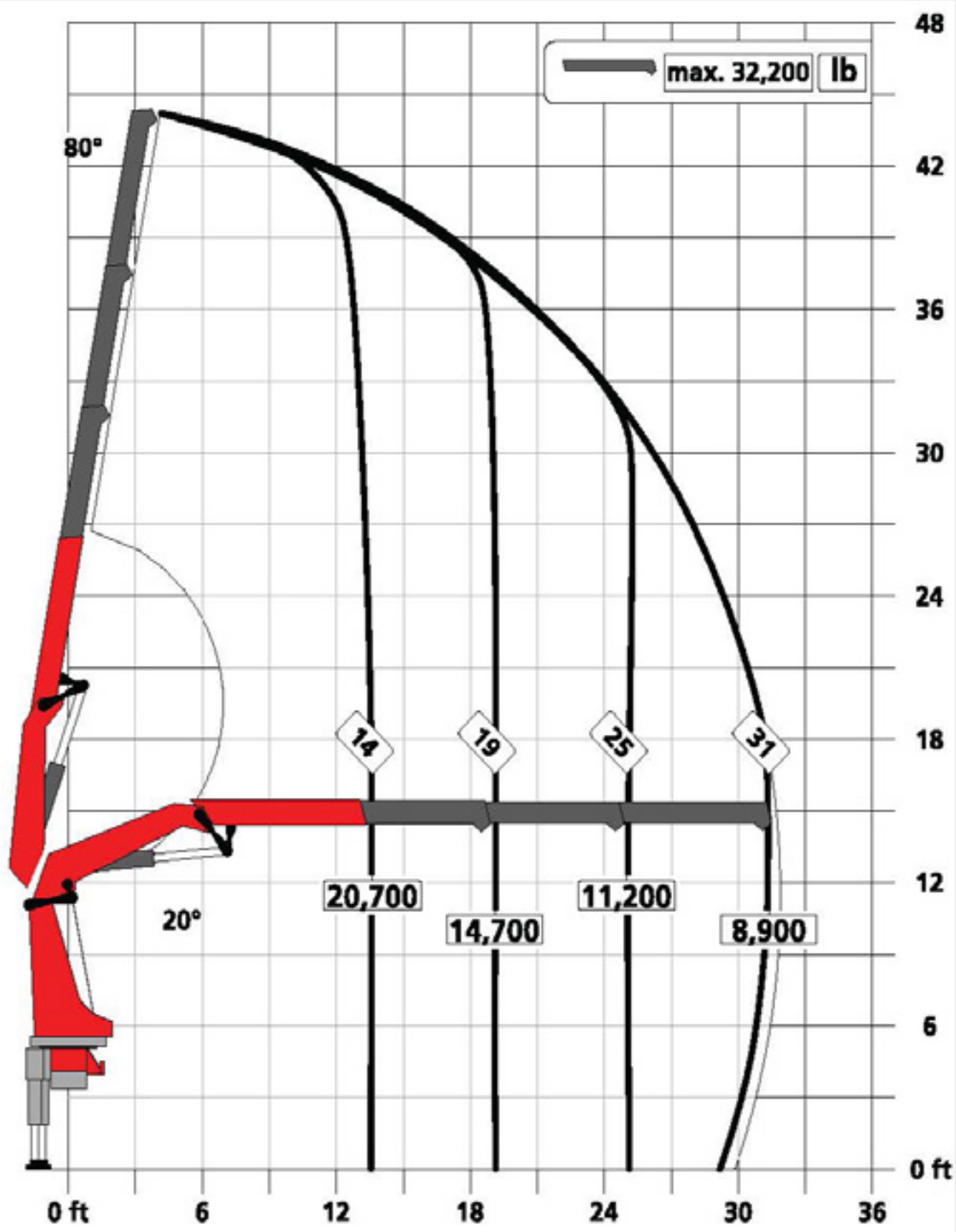
ABOUT US



→ ENGINEERING SERVICES

Dealer installations are carried out through PALFINGER engineering services to ensure optimum layout, weight distribution and stability.

PK 42002-SH



| EXTENSIONS | REACH | LIFTING CAPACITY (LBS) | CRANE WEIGHT (LBS) |
|------------|-------|------------------------|--------------------|
|------------|-------|------------------------|--------------------|

|              |               |              |              |
|--------------|---------------|--------------|--------------|
| 2 (A)        | 25'3"         | 11,700       | 8,488        |
| <b>3 (B)</b> | <b>31'10"</b> | <b>8,900</b> | <b>9,039</b> |
| 4 (C)        | 38'9"         | 6,900        | 9,590        |
| 5 (D)        | 46'3"         | 5,300        | 10,251       |
| 6 (E)        | 53'10"        | 4,200        | 10,714       |
| 7 (F)        | 64'4"         | 3,300        | 11,122       |
| 8 (G)        | 68'11"        | 2,600        | 11,497       |

○ Load chart shown is crane with 3 hydraulic extentions (B)





LIFETIME EXCELLENCE

HOME

OVERVIEW

FEATURES

SERVICE

JOB STORY

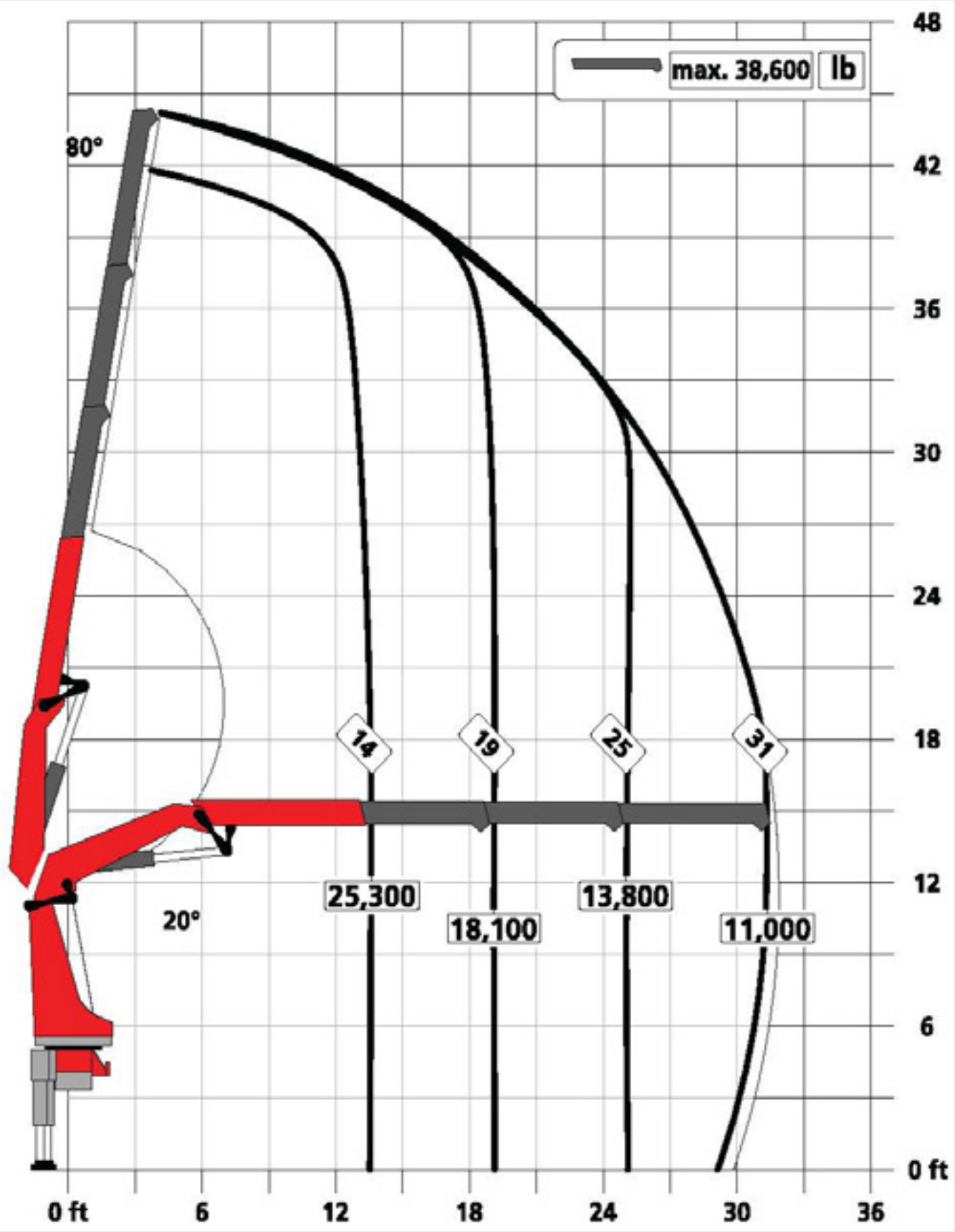
ABOUT US



→ ENGINEERING SERVICES

Dealer installations are carried out through PALFINGER engineering services to ensure optimum layout, weight distribution and stability.

PK 53002-SH



| EXTENSIONS | REACH | LIFTING CAPACITY (LBS) | CRANE WEIGHT (LBS) |
|------------|-------|------------------------|--------------------|
|------------|-------|------------------------|--------------------|

|       |        |        |        |
|-------|--------|--------|--------|
| 2 (A) | 25'3"  | 14,300 | 9,138  |
| 3 (B) | 31'10" | 11,000 | 9,722  |
| 4 (C) | 38'9"  | 8,600  | 10,328 |
| 5 (D) | 46'3"  | 6,700  | 11,023 |
| 6 (E) | 53'10" | 5,400  | 11,519 |
| 7 (F) | 64'4"  | 4,300  | 11,960 |
| 8 (G) | 68'11" | 3,500  | 12,357 |

○ Load chart shown is crane with 3 hydraulic extensions (B)





LIFETIME EXCELLENCE

HOME

OVERVIEW

FEATURES

SERVICE

JOB STORY

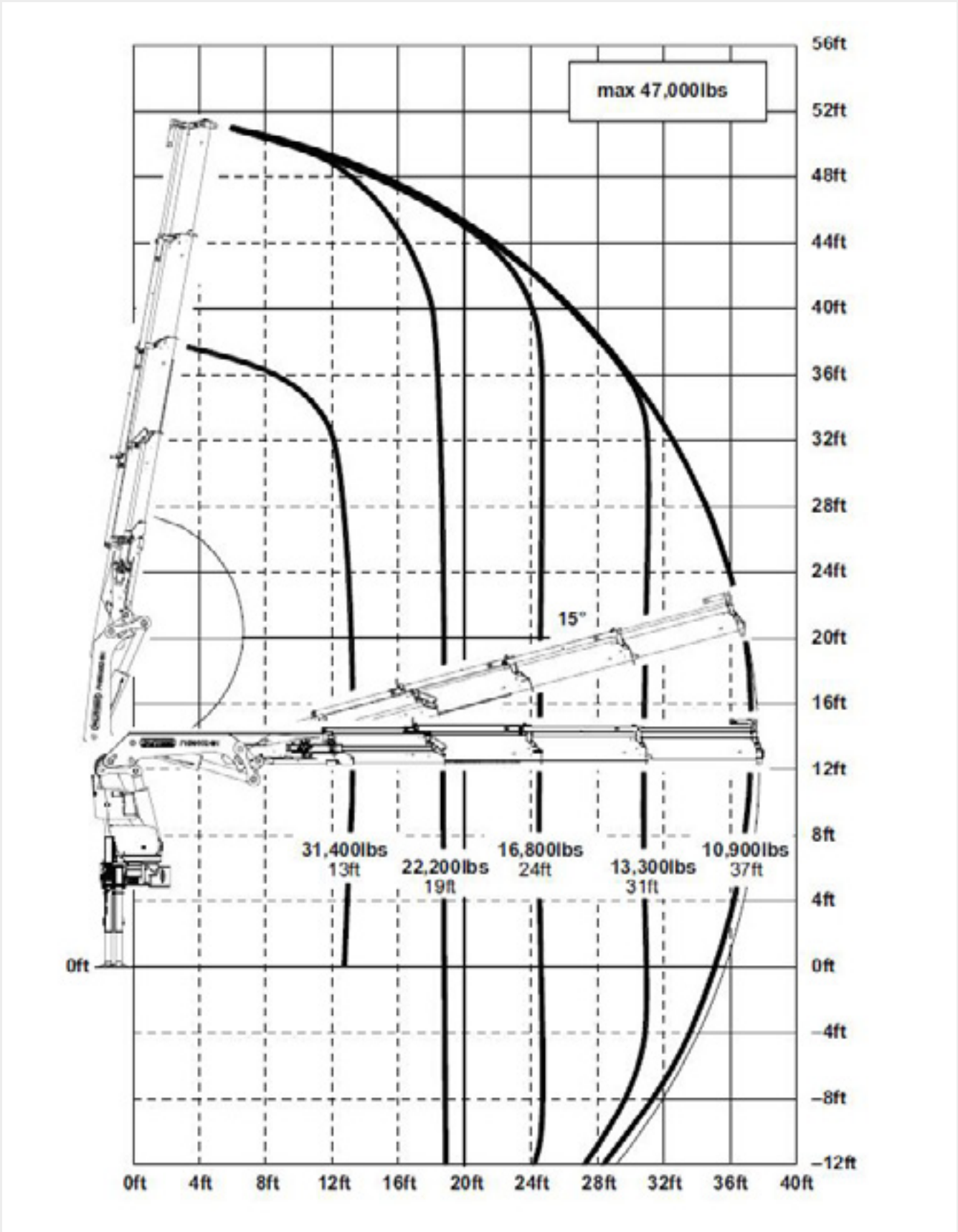
ABOUT US



→ ENGINEERING SERVICES

Dealer installations are carried out through PALFINGER engineering services to ensure optimum layout, weight distribution and stability.

# PK 65002-SH



| EXTENSIONS | REACH | LIFTING CAPACITY (LBS) | CRANE WEIGHT (LBS) |
|------------|-------|------------------------|--------------------|
|------------|-------|------------------------|--------------------|

|              |              |               |               |
|--------------|--------------|---------------|---------------|
| 2 (A)        | 24'11"       | 18,100        | 11,111        |
| 3 (B)        | 31'2"        | 13,900        | 11,869        |
| <b>4 (C)</b> | <b>37'9"</b> | <b>10,900</b> | <b>12,513</b> |
| 5 (D)        | 44'11"       | 8,600         | 13,439        |
| 6 (E)        | 52'2"        | 6,800         | 14,120        |
| 7 (F)        | 59'5"        | 5,600         | 14,619        |
| 8 (G)        | 66'11"       | 4,600         | 15,002        |

○ Load chart shown is crane with 4 hydraulic extentionts (C)







LIFETIME EXCELLENCE

HOME

OVERVIEW

FEATURES

SERVICE

JOB STORY

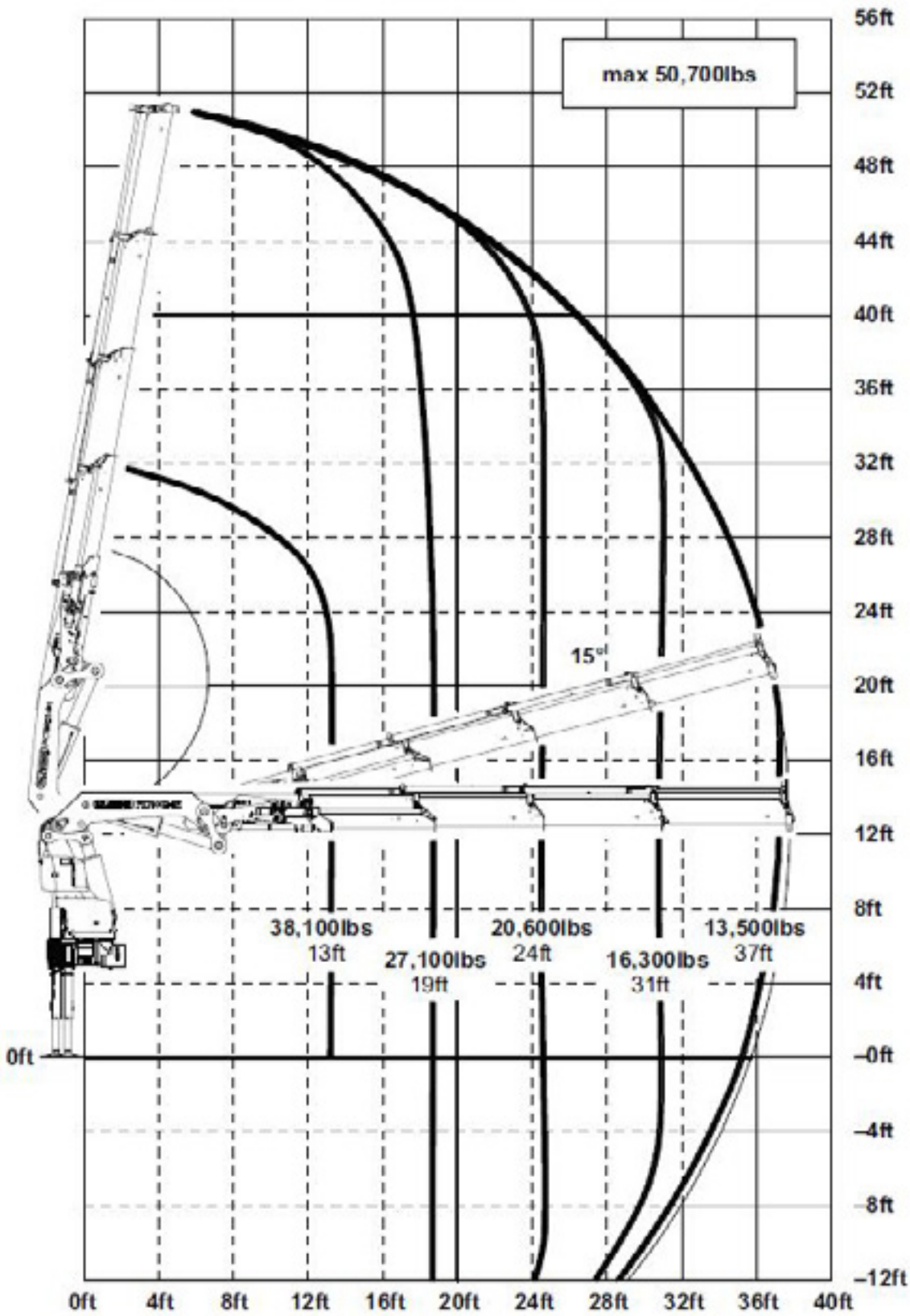
ABOUT US



→ ENGINEERING SERVICES

Dealer installations are carried out through PALFINGER engineering services to ensure optimum layout, weight distribution and stability.

# PK 78002-SH



EXTENSIONS

REACH

LIFTING CAPACITY (LBS)

CRANE WEIGHT (LBS)

|       |        |        |        |
|-------|--------|--------|--------|
| 2 (A) | 24'11" | 21,900 | 13,025 |
| 3 (B) | 31'2"  | 17,000 | 13,770 |
| 4 (C) | 37'9"  | 13,500 | 14,506 |
| 5 (D) | 44'11" | 10,600 | 15,520 |
| 6 (E) | 52'2"  | 8,700  | 16,107 |
| 7 (F) | 59'5"  | 7,200  | 16,598 |
| 8 (G) | 66'11" | 6,000  | 17,030 |

Load chart shown is crane with 4 hydraulic extentions (C)





LIFETIME EXCELLENCE

HOME

OVERVIEW

FEATURES

SERVICE

JOB STORY

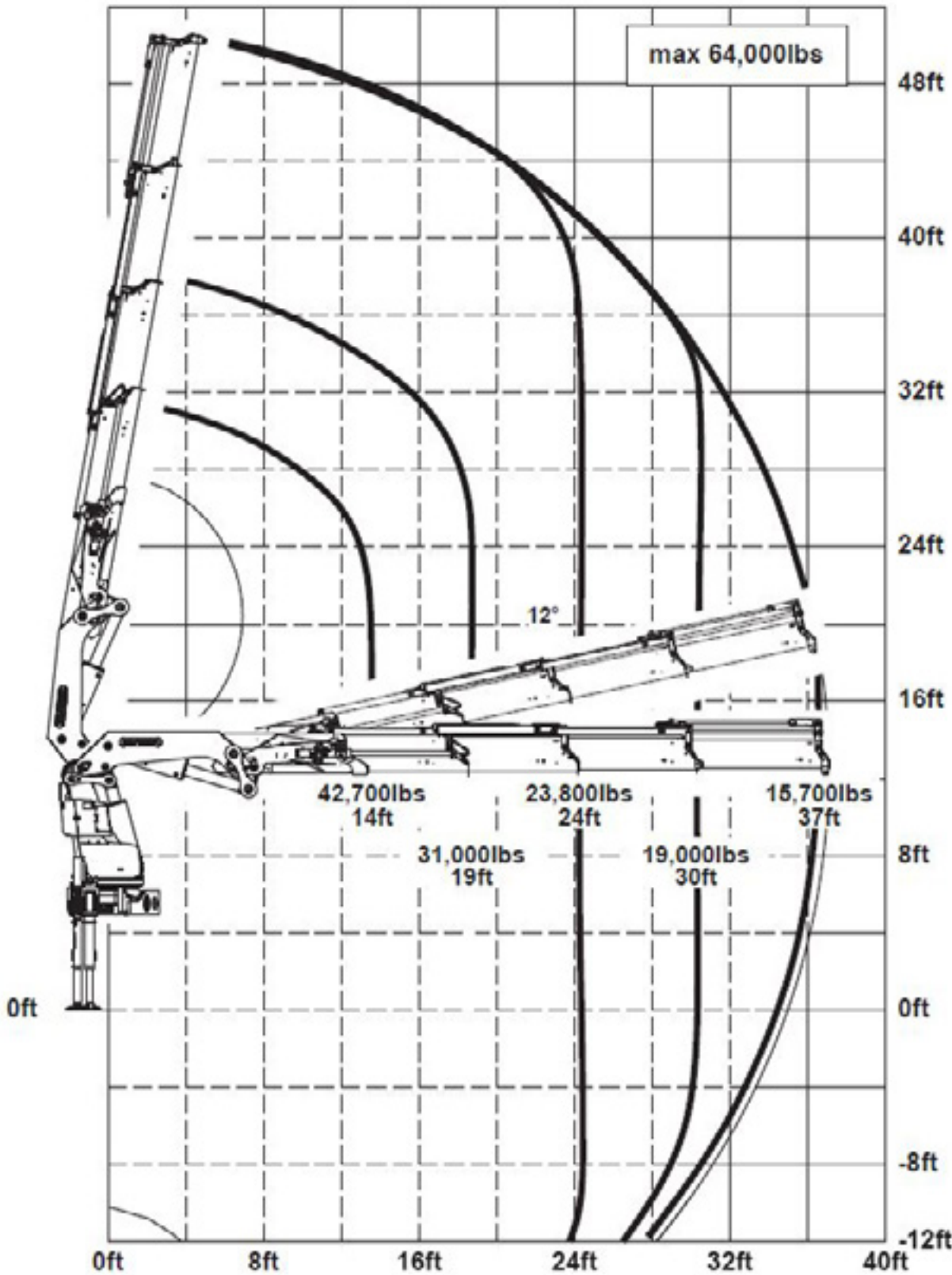
ABOUT US



→ ENGINEERING SERVICES

Dealer installations are carried out through PALFINGER engineering services to ensure optimum layout, weight distribution and stability.

PK 92002-SH



| EXTENSIONS | REACH | LIFTING CAPACITY (LBS) | CRANE WEIGHT (LBS) |
|------------|-------|------------------------|--------------------|
|------------|-------|------------------------|--------------------|

|       |        |        |        |
|-------|--------|--------|--------|
| 2 (A) | 24'3"  | 25,600 | 14,947 |
| 3 (B) | 30'6"  | 19,900 | 15,741 |
| 4 (C) | 37'1"  | 15,700 | 16,556 |
| 5 (D) | 44'3"  | 12,500 | 17,306 |
| 6 (E) | 51'6"  | 10,200 | 18,034 |
| 7 (F) | 59'1"  | 8,300  | 18,695 |
| 8 (G) | 66'3"  | 6,900  | 19,268 |
| 9 (H) | 73'10" | 5,800  | 19,665 |

Load chart shown is crane with 4 hydraulic extentions (C)







LIFETIME EXCELLENCE

HOME

OVERVIEW

FEATURES

SERVICE

JOB STORY

ABOUT US



→ ENGINEERING SERVICES

Dealer installations are carried out through PALFINGER engineering services to ensure optimum layout, weight distribution and stability.

# ENGINEERING SERVICE

**STABILITY ANALYSIS**

THIS DRAWING SHOWS THE STABILITY OF THE FINISHED TRUCK. CALCULATIONS ARE DONE WITHOUT PAYLOAD, FUEL, OR DRIVER, (WORST CASE).

NOTES:

- STABILITY RESU INFORMATION D
- ALL UNITS MUST TESTED
- RESULTS BASED DESCRIBED ON

RESULTS ARE:

- 1) PIC CHART WORKING AREA
- 2) STABILITY I GREATER THAN SUBFRAME TYP
- 3) PAD/TBRT I: OUTRIGGER PAD WORKING DIREC

**WEIGHT DISTRIBUTION**

THIS IS THE STREET-SIDE VIEW OF THE FINISHED UNIT. HEIGHTS AND GROUND CLEARANCES, WHEN SHOWN, ARE BASED ON A SEMI-LODEN FRAME HEIGHT.

FRONT

THE A : 9,673 L

THE MAXIMUM : 10,032 L

THE GROSS WD : 19,705 L

COMMENTS: PAYLOAD BASED O

WEIGHT DISTR. ON

HEIGHTS SHOWN ARE THEORETICAL

LOAD EQUALING WEIGHT OF 10

1) LIFTING CAPABILITY OF A TRUCK

2) LIFTING CAPABILITY OF A TRUCK

3) LIFTING CAPABILITY OF A TRUCK

4) LIFTING CAPABILITY OF A TRUCK

5) LIFTING CAPABILITY OF A TRUCK

6) LIFTING CAPABILITY OF A TRUCK

7) LIFTING CAPABILITY OF A TRUCK

8) LIFTING CAPABILITY OF A TRUCK

9) LIFTING CAPABILITY OF A TRUCK

10) LIFTING CAPABILITY OF A TRUCK

11) LIFTING CAPABILITY OF A TRUCK

12) LIFTING CAPABILITY OF A TRUCK

13) LIFTING CAPABILITY OF A TRUCK

14) LIFTING CAPABILITY OF A TRUCK

15) LIFTING CAPABILITY OF A TRUCK

16) LIFTING CAPABILITY OF A TRUCK

17) LIFTING CAPABILITY OF A TRUCK

18) LIFTING CAPABILITY OF A TRUCK

19) LIFTING CAPABILITY OF A TRUCK

20) LIFTING CAPABILITY OF A TRUCK

21) LIFTING CAPABILITY OF A TRUCK

22) LIFTING CAPABILITY OF A TRUCK

23) LIFTING CAPABILITY OF A TRUCK

24) LIFTING CAPABILITY OF A TRUCK

25) LIFTING CAPABILITY OF A TRUCK

26) LIFTING CAPABILITY OF A TRUCK

27) LIFTING CAPABILITY OF A TRUCK

28) LIFTING CAPABILITY OF A TRUCK

29) LIFTING CAPABILITY OF A TRUCK

30) LIFTING CAPABILITY OF A TRUCK

31) LIFTING CAPABILITY OF A TRUCK

32) LIFTING CAPABILITY OF A TRUCK

33) LIFTING CAPABILITY OF A TRUCK

34) LIFTING CAPABILITY OF A TRUCK

35) LIFTING CAPABILITY OF A TRUCK

36) LIFTING CAPABILITY OF A TRUCK

37) LIFTING CAPABILITY OF A TRUCK

38) LIFTING CAPABILITY OF A TRUCK

39) LIFTING CAPABILITY OF A TRUCK

40) LIFTING CAPABILITY OF A TRUCK

41) LIFTING CAPABILITY OF A TRUCK

42) LIFTING CAPABILITY OF A TRUCK

43) LIFTING CAPABILITY OF A TRUCK

44) LIFTING CAPABILITY OF A TRUCK

45) LIFTING CAPABILITY OF A TRUCK

46) LIFTING CAPABILITY OF A TRUCK

47) LIFTING CAPABILITY OF A TRUCK

48) LIFTING CAPABILITY OF A TRUCK

49) LIFTING CAPABILITY OF A TRUCK

50) LIFTING CAPABILITY OF A TRUCK

51) LIFTING CAPABILITY OF A TRUCK

52) LIFTING CAPABILITY OF A TRUCK

53) LIFTING CAPABILITY OF A TRUCK

54) LIFTING CAPABILITY OF A TRUCK

55) LIFTING CAPABILITY OF A TRUCK

56) LIFTING CAPABILITY OF A TRUCK

57) LIFTING CAPABILITY OF A TRUCK

58) LIFTING CAPABILITY OF A TRUCK

59) LIFTING CAPABILITY OF A TRUCK

60) LIFTING CAPABILITY OF A TRUCK

61) LIFTING CAPABILITY OF A TRUCK

62) LIFTING CAPABILITY OF A TRUCK

63) LIFTING CAPABILITY OF A TRUCK

64) LIFTING CAPABILITY OF A TRUCK

65) LIFTING CAPABILITY OF A TRUCK

66) LIFTING CAPABILITY OF A TRUCK

67) LIFTING CAPABILITY OF A TRUCK

68) LIFTING CAPABILITY OF A TRUCK

69) LIFTING CAPABILITY OF A TRUCK

70) LIFTING CAPABILITY OF A TRUCK

71) LIFTING CAPABILITY OF A TRUCK

72) LIFTING CAPABILITY OF A TRUCK

73) LIFTING CAPABILITY OF A TRUCK

74) LIFTING CAPABILITY OF A TRUCK

75) LIFTING CAPABILITY OF A TRUCK

76) LIFTING CAPABILITY OF A TRUCK

77) LIFTING CAPABILITY OF A TRUCK

78) LIFTING CAPABILITY OF A TRUCK

79) LIFTING CAPABILITY OF A TRUCK

80) LIFTING CAPABILITY OF A TRUCK

81) LIFTING CAPABILITY OF A TRUCK

82) LIFTING CAPABILITY OF A TRUCK

83) LIFTING CAPABILITY OF A TRUCK

84) LIFTING CAPABILITY OF A TRUCK

85) LIFTING CAPABILITY OF A TRUCK

86) LIFTING CAPABILITY OF A TRUCK

87) LIFTING CAPABILITY OF A TRUCK

88) LIFTING CAPABILITY OF A TRUCK

89) LIFTING CAPABILITY OF A TRUCK

90) LIFTING CAPABILITY OF A TRUCK

91) LIFTING CAPABILITY OF A TRUCK

92) LIFTING CAPABILITY OF A TRUCK

93) LIFTING CAPABILITY OF A TRUCK

94) LIFTING CAPABILITY OF A TRUCK

95) LIFTING CAPABILITY OF A TRUCK

96) LIFTING CAPABILITY OF A TRUCK

97) LIFTING CAPABILITY OF A TRUCK

98) LIFTING CAPABILITY OF A TRUCK

99) LIFTING CAPABILITY OF A TRUCK

100) LIFTING CAPABILITY OF A TRUCK

**FINAL LAYOUT**

THIS IS THE STREET-SIDE VIEW OF THE FINISHED UNIT. HEIGHTS AND GROUND CLEARANCES, WHEN SHOWN, ARE BASED ON A SEMI-LODEN FRAME HEIGHT.

FRONT

THE A : 9,673 L

THE MAXIMUM : 10,032 L

THE GROSS WD : 19,705 L

COMMENTS: PAYLOAD BASED O

WEIGHT DISTR. ON

HEIGHTS SHOWN ARE THEORETICAL

LOAD EQUALING WEIGHT OF 10

1) LIFTING CAPABILITY OF A TRUCK

2) LIFTING CAPABILITY OF A TRUCK

3) LIFTING CAPABILITY OF A TRUCK

4) LIFTING CAPABILITY OF A TRUCK

5) LIFTING CAPABILITY OF A TRUCK

6) LIFTING CAPABILITY OF A TRUCK

7) LIFTING CAPABILITY OF A TRUCK

8) LIFTING CAPABILITY OF A TRUCK

9) LIFTING CAPABILITY OF A TRUCK

10) LIFTING CAPABILITY OF A TRUCK

11) LIFTING CAPABILITY OF A TRUCK

12) LIFTING CAPABILITY OF A TRUCK

13) LIFTING CAPABILITY OF A TRUCK

14) LIFTING CAPABILITY OF A TRUCK

15) LIFTING CAPABILITY OF A TRUCK

16) LIFTING CAPABILITY OF A TRUCK

17) LIFTING CAPABILITY OF A TRUCK

18) LIFTING CAPABILITY OF A TRUCK

19) LIFTING CAPABILITY OF A TRUCK

20) LIFTING CAPABILITY OF A TRUCK

21) LIFTING CAPABILITY OF A TRUCK

22) LIFTING CAPABILITY OF A TRUCK

23) LIFTING CAPABILITY OF A TRUCK

24) LIFTING CAPABILITY OF A TRUCK

25) LIFTING CAPABILITY OF A TRUCK

26) LIFTING CAPABILITY OF A TRUCK

27) LIFTING CAPABILITY OF A TRUCK

28) LIFTING CAPABILITY OF A TRUCK

29) LIFTING CAPABILITY OF A TRUCK

30) LIFTING CAPABILITY OF A TRUCK

31) LIFTING CAPABILITY OF A TRUCK

32) LIFTING CAPABILITY OF A TRUCK

33) LIFTING CAPABILITY OF A TRUCK

34) LIFTING CAPABILITY OF A TRUCK

35) LIFTING CAPABILITY OF A TRUCK

36) LIFTING CAPABILITY OF A TRUCK

37) LIFTING CAPABILITY OF A TRUCK

38) LIFTING CAPABILITY OF A TRUCK

39) LIFTING CAPABILITY OF A TRUCK

40) LIFTING CAPABILITY OF A TRUCK

41) LIFTING CAPABILITY OF A TRUCK

42) LIFTING CAPABILITY OF A TRUCK

43) LIFTING CAPABILITY OF A TRUCK

44) LIFTING CAPABILITY OF A TRUCK

45) LIFTING CAPABILITY OF A TRUCK

46) LIFTING CAPABILITY OF A TRUCK

47) LIFTING CAPABILITY OF A TRUCK

48) LIFTING CAPABILITY OF A TRUCK

49) LIFTING CAPABILITY OF A TRUCK

50) LIFTING CAPABILITY OF A TRUCK

51) LIFTING CAPABILITY OF A TRUCK

52) LIFTING CAPABILITY OF A TRUCK

53) LIFTING CAPABILITY OF A TRUCK

54) LIFTING CAPABILITY OF A TRUCK

55) LIFTING CAPABILITY OF A TRUCK

56) LIFTING CAPABILITY OF A TRUCK

57) LIFTING CAPABILITY OF A TRUCK

58) LIFTING CAPABILITY OF A TRUCK

59) LIFTING CAPABILITY OF A TRUCK

60) LIFTING CAPABILITY OF A TRUCK

61) LIFTING CAPABILITY OF A TRUCK

62) LIFTING CAPABILITY OF A TRUCK

63) LIFTING CAPABILITY OF A TRUCK

64) LIFTING CAPABILITY OF A TRUCK

65) LIFTING CAPABILITY OF A TRUCK

66) LIFTING CAPABILITY OF A TRUCK

67) LIFTING CAPABILITY OF A TRUCK

68) LIFTING CAPABILITY OF A TRUCK

69) LIFTING CAPABILITY OF A TRUCK

70) LIFTING CAPABILITY OF A TRUCK

71) LIFTING CAPABILITY OF A TRUCK

72) LIFTING CAPABILITY OF A TRUCK

73) LIFTING CAPABILITY OF A TRUCK

74) LIFTING CAPABILITY OF A TRUCK

75) LIFTING CAPABILITY OF A TRUCK

76) LIFTING CAPABILITY OF A TRUCK

77) LIFTING CAPABILITY OF A TRUCK

78) LIFTING CAPABILITY OF A TRUCK

79) LIFTING CAPABILITY OF A TRUCK

80) LIFTING CAPABILITY OF A TRUCK

81) LIFTING CAPABILITY OF A TRUCK

82) LIFTING CAPABILITY OF A TRUCK

83) LIFTING CAPABILITY OF A TRUCK

84) LIFTING CAPABILITY OF A TRUCK

85) LIFTING CAPABILITY OF A TRUCK

86) LIFTING CAPABILITY OF A TRUCK

87) LIFTING CAPABILITY OF A TRUCK

88) LIFTING CAPABILITY OF A TRUCK

89) LIFTING CAPABILITY OF A TRUCK

90) LIFTING CAPABILITY OF A TRUCK

91) LIFTING CAPABILITY OF A TRUCK

92) LIFTING CAPABILITY OF A TRUCK

93) LIFTING CAPABILITY OF A TRUCK

94) LIFTING CAPABILITY OF A TRUCK

95) LIFTING CAPABILITY OF A TRUCK

96) LIFTING CAPABILITY OF A TRUCK

97) LIFTING CAPABILITY OF A TRUCK

98) LIFTING CAPABILITY OF A TRUCK

99) LIFTING CAPABILITY OF A TRUCK

100) LIFTING CAPABILITY OF A TRUCK

**TRUCK SPECIFICATION**

THIS IS THE TRUCK INFORMATION USED IN THE FINAL LAYOUT, WEIGHT DISTRIBUTION, AND STABILITY ANALYSIS FOR THIS PROJECT. IF THE TRUCK IS ALREADY BUILT, IT MAY HAVE TO BE MODIFIED (E.G. STRETCH WHEELBASE, EXTEND FRAME RAILS) TO MATCH THIS SPECIFICATION. IF THE TRUCK HASN'T BEEN PURCHASED YET OR IF IT IS STILL 'ON PAPER', USE THIS SPECIFICATION TO HAVE THE TRUCK BUILT PROPERLY.

**PK 40002-EH B KENWORTH T880**

REVISION CONTROL

| REV | CHANGE                    | DATE     |
|-----|---------------------------|----------|
| 1   | ISSUE                     | 10/11/15 |
| 2   | ADD TAIL, 1000-1111111111 | 10/11/15 |
| 3   |                           |          |

**PALFINGER**

**CRANE / TRUCK ANALYSIS PACKAGE**

DATE: 10/11/15

BY: M.P.

REVISION: 10/11/15

1 OF 5



CATIONS

LOAD CHART

LOAD CHART

LOAD CHART

LOAD CHART

LOAD CHART

LOAD CHART

LOAD CHART



# PALFINGER ON THE JOB

## PRECAST CONCRETE



| GENERAL | MID-RANGE | LARGE-RANGE | APPLICATIONS |  |
|---------|-----------|-------------|--------------|--|
|---------|-----------|-------------|--------------|--|

**GAIN MORE OPPORTUNITIES WITH THE RIGHT EQUIPMENT!**

With PALFINGER, we have the right equipment to deliver your diverse products: Tanks, Catch Basins, Utility Vaults, Buildings, Barriers, Monuments, Burial Vaults, Stairs, Manholes, Pipes, and more. The possibilities are endless!

In an industry with a range of tough multi-purpose construction materials, you need a partner to deliver with precision and control every time – whether the materials are positioned at the job site or in their final place.



# PALFINGER ON THE JOB

## PRECAST CONCRETE



GENERAL

MID-RANGE

LARGE-RANGE

APPLICATIONS



### **GAIN MORE OPPORTUNITIES WITH THE RIGHT EQUIPMENT!**

With PALFINGER, we have the right equipment to deliver your diverse products: Tanks, Catch Basins, Utility Vaults, Buildings, Barriers, Monuments, Burial Vaults, Stairs, Manholes, Pipes, and more. The possibilities are endless!

In an industry with a range of tough multi-purpose construction materials, you need a partner to deliver with precision and control every time – whether the materials are positioned at the job site or in their final place.



# PALFINGER ON THE JOB

## PRECAST CONCRETE



GENERAL

MID-RANGE

LARGE-RANGE

APPLICATIONS



### **GAIN MORE OPPORTUNITIES WITH THE RIGHT EQUIPMENT!**

With PALFINGER, we have the right equipment to deliver your diverse products: Tanks, Catch Basins, Utility Vaults, Buildings, Barriers, Monuments, Burial Vaults, Stairs, Manholes, Pipes, and more. The possibilities are endless!

In an industry with a range of tough multi-purpose construction materials, you need a partner to deliver with precision and control every time – whether the materials are positioned at the job site or in their final place.

# PALFINGER ON THE JOB

## PRECAST CONCRETE



GENERAL

MID-RANGE

LARGE-RANGE

APPLICATIONS



### **GAIN MORE OPPORTUNITIES WITH THE RIGHT EQUIPMENT!**

With PALFINGER, we have the right equipment to deliver your diverse products: Tanks, Catch Basins, Utility Vaults, Buildings, Barriers, Monuments, Burial Vaults, Stairs, Manholes, Pipes, and more. The possibilities are endless!

In an industry with a range of tough multi-purpose construction materials, you need a partner to deliver with precision and control every time – whether the materials are positioned at the job site or in their final place.



# PALFINGER ON THE JOB PRECAST CONCRETE



GENERAL

MID-RANGE

LARGE-RANGE

APPLICATIONS



## **GAIN MORE OPPORTUNITIES WITH THE RIGHT EQUIPMENT!**

With PALFINGER, we have the right equipment to deliver your diverse products: Tanks, Catch Basins, Utility Vaults, Buildings, Barriers, Monuments, Burial Vaults, Stairs, Manholes, Pipes, and more. The possibilities are endless!

In an industry with a range of tough multi-purpose construction materials, you need a partner to deliver with precision and control every time – whether the materials are positioned at the job site or in their final place.

# PALFINGER ON THE JOB

## PRECAST CONCRETE



GENERAL

MID-RANGE

LARGE-RANGE

APPLICATIONS



### **GAIN MORE OPPORTUNITIES WITH THE RIGHT EQUIPMENT!**

With PALFINGER, we have the right equipment to deliver your diverse products: Tanks, Catch Basins, Utility Vaults, Buildings, Barriers, Monuments, Burial Vaults, Stairs, Manholes, Pipes, and more. The possibilities are endless!

In an industry with a range of tough multi-purpose construction materials, you need a partner to deliver with precision and control every time – whether the materials are positioned at the job site or in their final place.

# PALFINGER ON THE JOB

## PRECAST CONCRETE



GENERAL

MID-RANGE

LARGE-RANGE

APPLICATIONS



### **GAIN MORE OPPORTUNITIES WITH THE RIGHT EQUIPMENT!**

With PALFINGER, we have the right equipment to deliver your diverse products: Tanks, Catch Basins, Utility Vaults, Buildings, Barriers, Monuments, Burial Vaults, Stairs, Manholes, Pipes, and more. The possibilities are endless!

In an industry with a range of tough multi-purpose construction materials, you need a partner to deliver with precision and control every time – whether the materials are positioned at the job site or in their final place.



# PALFINGER ON THE JOB

## PRECAST CONCRETE



GENERAL

MID-RANGE

LARGE-RANGE

APPLICATIONS



### **GAIN MORE OPPORTUNITIES WITH THE RIGHT EQUIPMENT!**

With PALFINGER, we have the right equipment to deliver your diverse products: Tanks, Catch Basins, Utility Vaults, Buildings, Barriers, Monuments, Burial Vaults, Stairs, Manholes, Pipes, and more. The possibilities are endless!

In an industry with a range of tough multi-purpose construction materials, you need a partner to deliver with precision and control every time – whether the materials are positioned at the job site or in their final place.

# PALFINGER ON THE JOB PRECAST CONCRETE



GENERAL

MID-RANGE

LARGE-RANGE

APPLICATIONS



## **GAIN MORE OPPORTUNITIES WITH THE RIGHT EQUIPMENT!**

With PALFINGER, we have the right equipment to deliver your diverse products: Tanks, Catch Basins, Utility Vaults, Buildings, Barriers, Monuments, Burial Vaults, Stairs, Manholes, Pipes, and more. The possibilities are endless!

In an industry with a range of tough multi-purpose construction materials, you need a partner to deliver with precision and control every time – whether the materials are positioned at the job site or in their final place.

# PALFINGER ON THE JOB

## PRECAST CONCRETE



GENERAL

MID-RANGE

LARGE-RANGE

APPLICATIONS



### **GAIN MORE OPPORTUNITIES WITH THE RIGHT EQUIPMENT!**

With PALFINGER, we have the right equipment to deliver your diverse products: Tanks, Catch Basins, Utility Vaults, Buildings, Barriers, Monuments, Burial Vaults, Stairs, Manholes, Pipes, and more. The possibilities are endless!

In an industry with a range of tough multi-purpose construction materials, you need a partner to deliver with precision and control every time – whether the materials are positioned at the job site or in their final place.



# PALFINGER ON THE JOB

## PRECAST CONCRETE



GENERAL

MID-RANGE

LARGE-RANGE

APPLICATIONS



### **GAIN MORE OPPORTUNITIES WITH THE RIGHT EQUIPMENT!**

With PALFINGER, we have the right equipment to deliver your diverse products: Tanks, Catch Basins, Utility Vaults, Buildings, Barriers, Monuments, Burial Vaults, Stairs, Manholes, Pipes, and more. The possibilities are endless!

In an industry with a range of tough multi-purpose construction materials, you need a partner to deliver with precision and control every time – whether the materials are positioned at the job site or in their final place.

# PALFINGER ON THE JOB

## PRECAST CONCRETE



GENERAL

MID-RANGE

LARGE-RANGE

APPLICATIONS



### **GAIN MORE OPPORTUNITIES WITH THE RIGHT EQUIPMENT!**

With PALFINGER, we have the right equipment to deliver your diverse products: Tanks, Catch Basins, Utility Vaults, Buildings, Barriers, Monuments, Burial Vaults, Stairs, Manholes, Pipes, and more. The possibilities are endless!

In an industry with a range of tough multi-purpose construction materials, you need a partner to deliver with precision and control every time – whether the materials are positioned at the job site or in their final place.

# PALFINGER ON THE JOB

## PRECAST CONCRETE



GENERAL

MID-RANGE

LARGE-RANGE

APPLICATIONS



### **GAIN MORE OPPORTUNITIES WITH THE RIGHT EQUIPMENT!**

With PALFINGER, we have the right equipment to deliver your diverse products: Tanks, Catch Basins, Utility Vaults, Buildings, Barriers, Monuments, Burial Vaults, Stairs, Manholes, Pipes, and more. The possibilities are endless!

In an industry with a range of tough multi-purpose construction materials, you need a partner to deliver with precision and control every time – whether the materials are positioned at the job site or in their final place.





LIFETIME EXCELLENCE

HOME

OVERVIEW

FEATURES

SERVICE

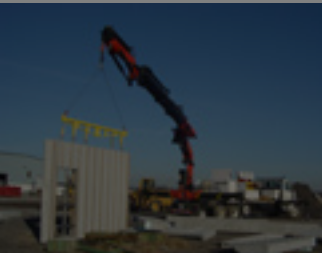
JOB STORY

ABOUT US

# PALFINGER ON PRECAST CONCRETE

GENERAL

MID-RANGE



→ SEE OUR FANS

**Rely on PALFINGER for a variety of p**  
With limitless possibilities for residential  
concrete is strong, versatile and durable  
heavier and heavier over time. In an ind  
construction materials, you need a partne  
time – whether the materials are position



**“THIS CRANE IS SO SMOOTH  
AND PRECISE...”**

With my PALFINGER crane, I am confident  
that I can accurately set heavy loads without  
damaging our products. It works great!”

Mark, Crane Operator,  
Hy-Grade Precast Concrete  
St.Catharines, ON





**PALFINGER**

LIFETIME EXCELLENCE

# PALFINGER ON THE JOB PRECAST CONCRETE





LIFETIME EXCELLENCE

HOME

OVERVIEW

FEATURES

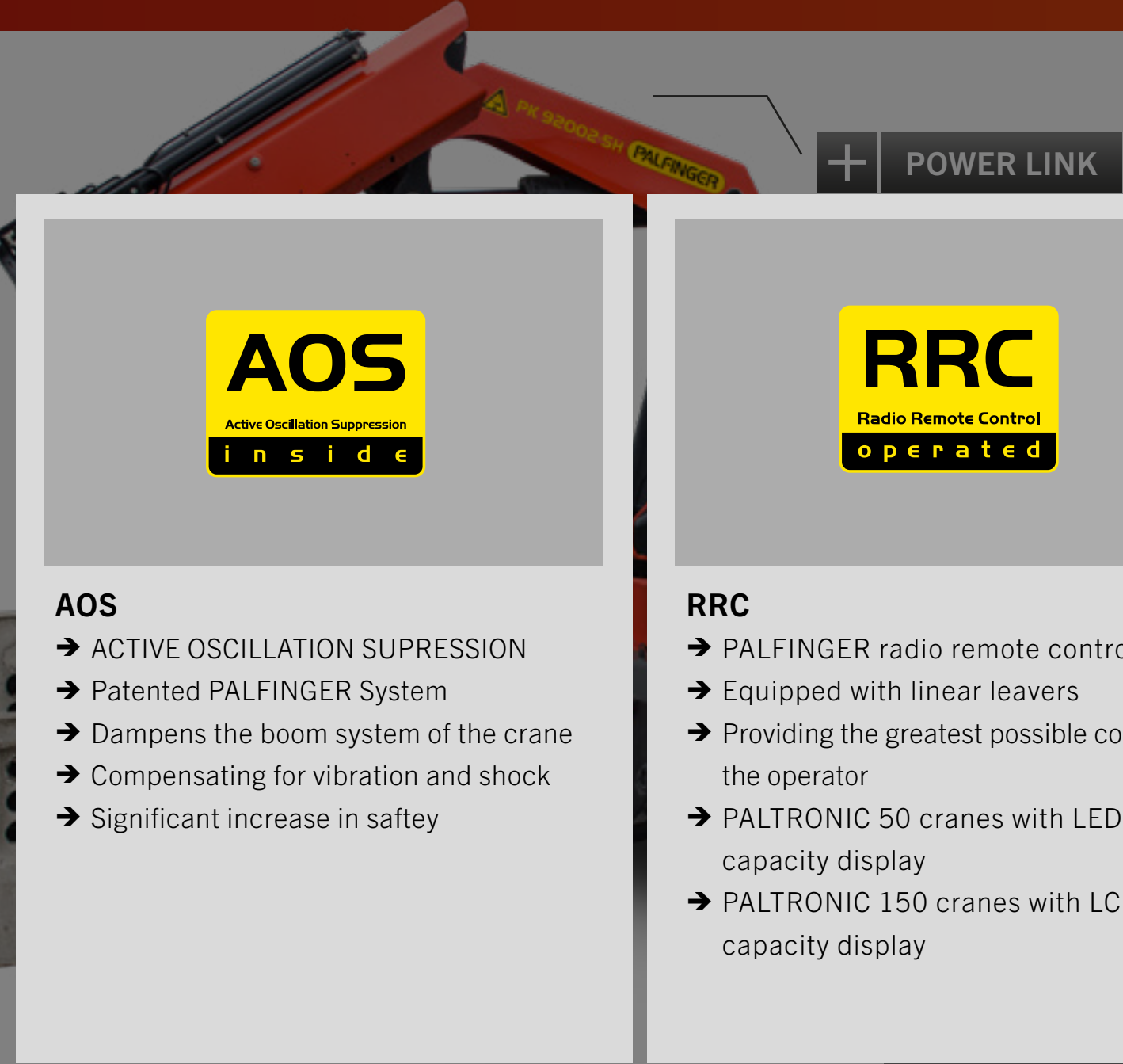
SE

JO

AB

# PALFINGER ON THE JOB

## PRECAST CONCRETE



### PALTRONIC 50 & PALTRONIC 150

- ➔ Latest control electronics
- ➔ Most important safety and comfort functions, offering smooth control, safe operation with overload cut-off and capacity display



### AOS

- ➔ ACTIVE OSCILLATION SUPPRESSION
- ➔ Patented PALFINGER System
- ➔ Dampens the boom system of the crane
- ➔ Compensating for vibration and shock
- ➔ Significant increase in safety



### RRC

- ➔ PALFINGER radio remote control
- ➔ Equipped with linear leavers
- ➔ Providing the greatest possible comfort of the operator
- ➔ PALTRONIC 50 cranes with LED capacity display
- ➔ PALTRONIC 150 cranes with LCD capacity display



### KTL

- ➔ Innovative technology for surface coating
- ➔ Foundation for durable and long-lasting surface protection
- ➔ PALFINGER Quality Standard - usually only found in the automobile industry



TILTABLE STABILIZERS







LIFETIME EXCELLENCE

HOME

OVERVIEW

FEATURES

SERVICE

JOB STORY

ABOUT US

# PALFINGER ON THE JOB

## PRECAST CONCRETE



+ LOW-MAINTENANCE  
EXTENSION SYSTEM

+ POWER LINK

+ CONTINUOUS

TILTABLE STABILIZER



### POWER LINK

The linkage system is a special connection between the knuckle boom and main boom. It increases the lifting power of the crane in the most important boom positions and maintains a constant lifting speed.

Paltronic  
50  
controlled

Paltronic  
150  
controlled

AOS  
Active Oscillation Suppression  
inside

RRC  
Radio Remote Control  
operated

KTL  
protected

+



LIFETIME EXCELLENCE

HOME

OVERVIEW

FEATURES

SERVICE

JOB STORY

ABOUT US

# PALFINGER ON THE JOB

## PRECAST CONCRETE



**+ LOW-MAINTENANCE  
EXTENSION SYSTEM**

**+ POWER LINK**

**+ CONTINUOUS ROTATION**



**LOW-MAINTENANCE  
EXTENSION SYSTEM**  
REDUCES SERVICE TIME

With sliding elements made of synthetic material and the high-quality KTL coating, this boom system significantly simplifies service performed by the operator. This saves time and money – and protects the environment.

**Paltronic  
50**  
controlled

**Paltronic  
150**  
controlled

**AOS**  
Active Oscillation Suppression  
inside

**RRC**  
Radio Remote Control  
operated

**KTL**  
protected

**+**

TILTA





LIFETIME EXCELLENCE

HOME

OVERVIEW

FEATURES

SERVICE

JOB STORY

ABOUT US

# PALFINGER ON THE JOB

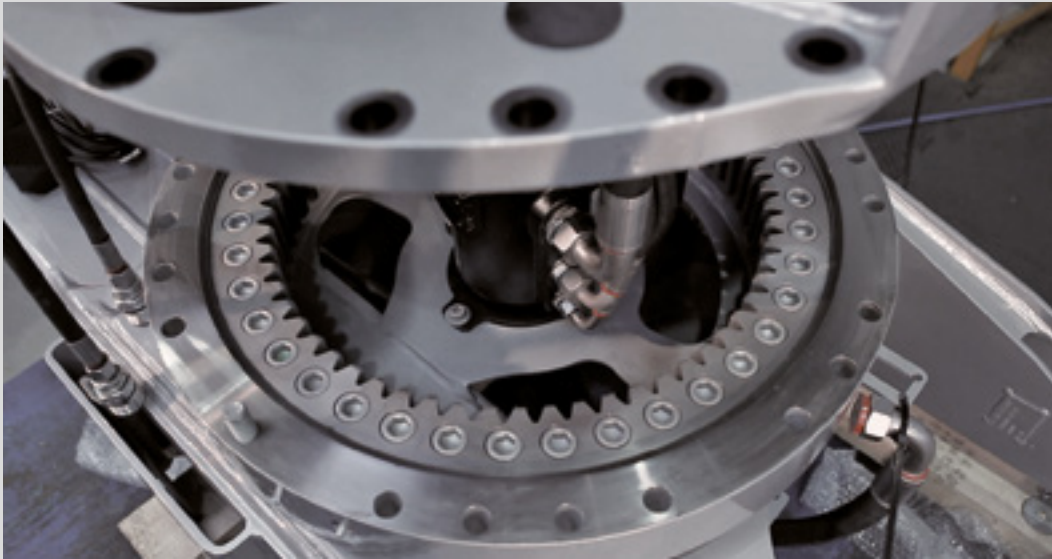
## PRECAST CONCRETE



+ LOW-MAINTENANCE  
EXTENSION SYSTEM

+ POWER LINK

+ CONTINUOUS ROTATION



### CONTINUOUS ROTATION SYSTEM

As found on construction excavators, the PALFINGER continuous rotation system allows an unrestricted working radius. The crane is rotated using a gear box and dual hydraulic slewing motors for powerful and precise control.

Paltronic  
50  
controlled

Paltronic  
150  
controlled

AOS  
Active Oscillation Suppression  
inside

RRC  
Radio Remote Control  
operated

KTL  
protected

+

TILTA





LIFETIME EXCELLENCE

HOME

OVERVIEW

FEATURES

SERVICE

JOB STORY

ABOUT US

# PALFINGER ON THE JOB

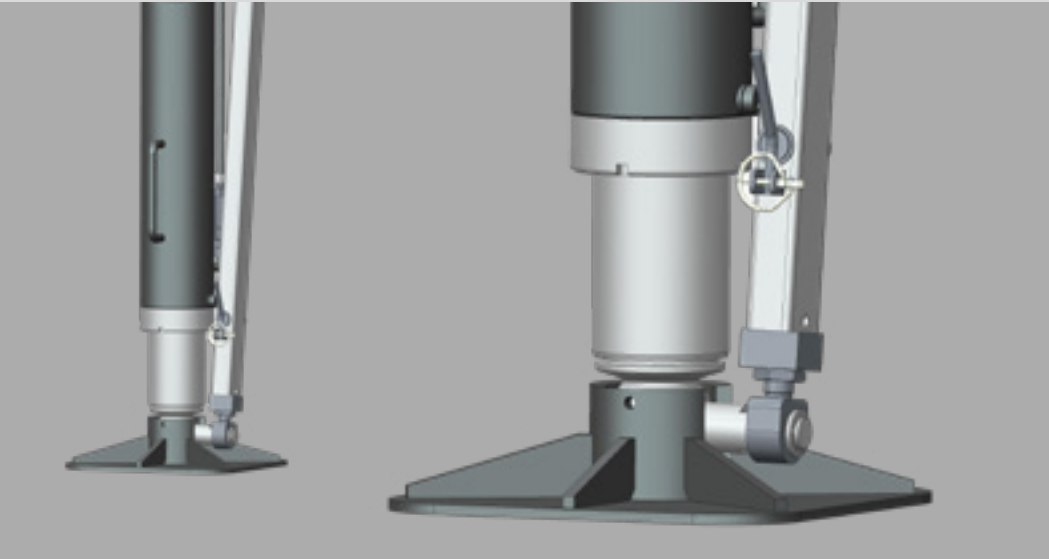
## PRECAST CONCRETE



+ LOW-MAINTENANCE  
EXTENSION SYSTEM

+ POWER LINK

+ CONTINUOUS ROTATION



### TILTABLE STABILIZERS

The ideal solution for precast cranes! Hydraulic Tiltable Stabilizers provide ideal ground clearance and departure angles plus you can mount the crane above the truck axels.

Paltronic  
50  
controlled

Paltronic  
150  
controlled

AOS  
Active Oscillation Suppression  
inside

RRC  
Radio Remote Control  
operated

KTU  
protected

+

TILTABLE



LIFETIME EXCELLENCE

HOME

OVERVIEW

FEATURES

SERVICE

JOB STORY

ABOUT US

# PALFINGER ON THE JOB

## PRECAST CONCRETE



+ LOW-MAINTENANCE  
EXTENSION SYSTEM

+ POWER LINK

+ CONTINUOUS ROTATION



### AUXILIARY STABILIZERS

PALFINGER offers a comprehensive range of high-quality Auxiliary Stabilizers that feature integrated stabilizer LED safety lights and tiltable stabilizer feet. Just like the crane, the KTL paint process protects the stabilizers from corrosion.

Paltronic  
50  
controlled

Paltronic  
150  
controlled

AOS  
Active Oscillation Suppression  
inside

RRC  
Radio Remote Control  
operated

KTL  
protected

+

TILTA

# PALFINGER ON THE JOB PRECAST CONCRETE



## SERVICE NETWORK

## SPARE PARTS

## WARRANTY

Your PALFINGER Crane will be a strong partner for all of your lifting needs. With minimal downtime for your business, you can expect more efficiency, reliability and safety on the job.

Should you encounter a problem - rely on the expertise and experience of our factory trained service network. Count on PALFINGER - we will put you back to work.

### RELIABILITY MEANS:

- ➔ After sales and service support
- ➔ Experienced service staff
- ➔ Service training at PALFINGER University
- ➔ Overnight parts delivery (within 24 h)
- ➔ Warranty programs







LIFETIME EXCELLENCE

# PALFINGER ON THE JOB

## PRECAST CONCRETE



SERVICE NETWORK

SPARE PARTS

WARRANTY

Ease of service and low maintenance is important for your business.  
That’s why PALFINGER has a strong and growing service network across North America, with many partners specializing in PALFINGER Cranes.



# PALFINGER ON THE JOB PRECAST CONCRETE



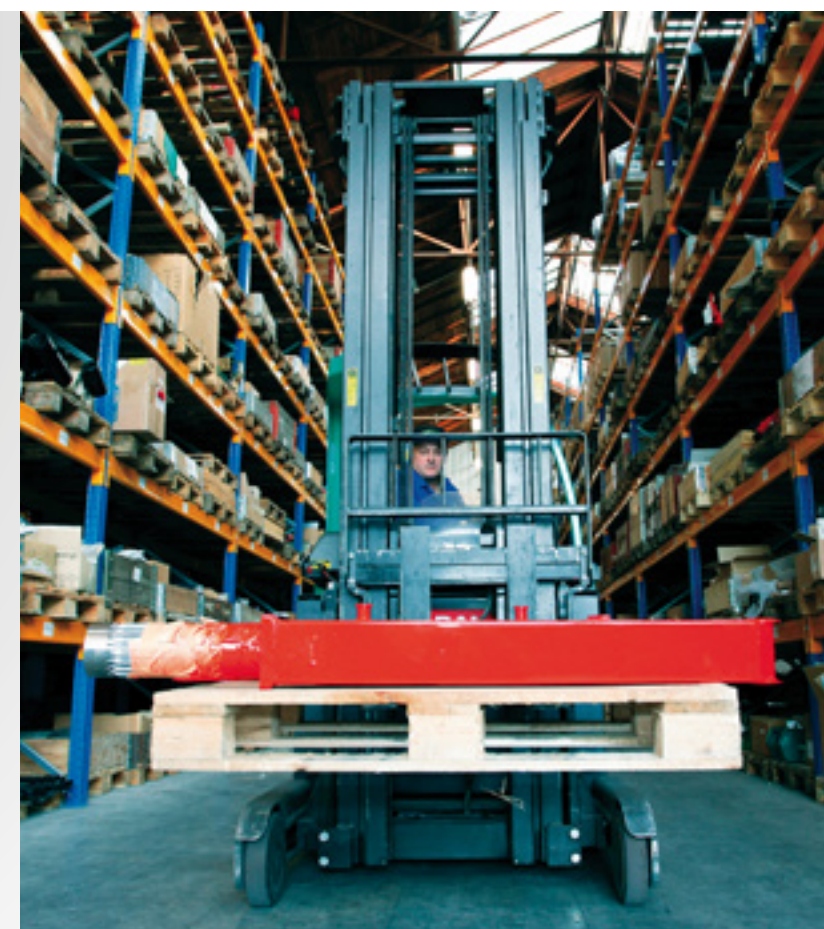
SERVICE NETWORK

SPARE PARTS

WARRANTY

We know that your business demands more than just top-quality products and that is why PALFINGER parts are your best choice for performance and reliability. We will provide you with genuine PALFINGER spare parts and components that will ensure long life and low maintenance costs for your PALFINGER equipment.

Your local PALFINGER dealer / distributor is the first line of customer parts service. As a company, PALFINGER is dedicated to keeping our dealers equipped with access to a large inventory of spare parts and experienced parts staff.



# PALFINGER ON THE JOB PRECAST CONCRETE



SERVICE NETWORK

SPARE PARTS

WARRANTY

PALFINGER cranes are quality products.

We guarantee maximum cost-effectiveness through a comprehensive warranty plan.

## MORE EFFICIENCY IN USE

- ➔ 12 months full warranty on all cranes
- ➔ 24 months warranty on radio remote controls
- ➔ 36 months warranty on all load-bearing parts of cranes that work in hook operation (24 months in grab operation)

## EXTENDED WARRANTY

- ➔ Warranty extension up to 24 months full warranty possible
- ➔ Warranty extension up to 36 months full warranty possible

Contact your PALFINGER representative to see our full warranty policy for details and limitations.





# PALFINGER ON THE JOB PRECAST CONCRETE

## JOB STORY

## HY-GRADE PRECAST CONCRETE

In 1948, the Girotti brothers founded Hy-Grade Precast Concrete in St. Catharines, ON, and produced their first concrete washtub. Since then, their product line has expanded significantly to include high-quality traffic barriers, modular buildings, utility vaults, precast stairs and retaining wall systems for various markets. In 2010, the company expanded into the USA and now operates a second location in South Byron, NY.

With a competitive edge in mind, owner, Dominic Girotti, set out to find a solution that would allow Hy-Grade to meet customer demands by reducing costs and adding value. The goal was clear: expand their current fleet to include a large knuckle boom crane capable of transporting and unloading 30,000 lbs. buildings at 20 ft. outreach, therefore eliminating the need for third party shipping and crane companies.

As an active member of the National Precast Concrete Association (NPCA)\*, Dominic turned to the industry to begin his search. “I had a need to deliver a particular building on a truck and offload it. That requires a big crane and a truck that can handle the weight of the building and the crane itself.

I spent a lot of time researching solutions from many suppliers, including PALFINGER,” explains Dominic. His search led to local PALFINGER dealer, FRF Hydraulic Inc. & FRF Fabrication Inc. (FRF), and owner Felix Frick who provided credible and knowledgeable information. Dominic reflects, “Felix showed me how I could achieve what I was looking for with the right product and through a quality installation. I felt very confident in the information he provided – it was a big deciding factor.”

With a crane package focused on payload and reach, FRF worked closely with PALFINGER to propose an ideal solution for Hy-Grade with a large knuckle boom crane; the PK 92002-SH. The crane has many unique features like Continuous Rotation, POWER LINK, Low Maintenance Extension System and Hydraulic Flip-up Stabilizers with LED lighting. Hy-Grade crane operator, Mark Hatton, says “the crane adds more flexibility on the job and makes my deliveries a lot easier.” In terms of performance, Mark comments that, “this crane is so smooth and precise. With my PALFINGER crane, I am confident that I can accurately set heavy loads without damaging our products. It works great!”

**“THE PAYBACK ON THE TRUCK WAS IMMEDIATE. AFTER TAKING POSSESSION OF THE PALFINGER CRANE, OUR DELIVERY COSTS LOWERED SIGNIFICANTLY.”**

Dominic Girotti, P.Eng  
President/Owner HY-Grade Precast Concrete



Dispatch Administrator, Gina Gonzalez adds, “I make the wheels on our PALFINGER truck turn every single day. Now, we offer the most value to our customers because the unit handles more weight and provides more flexibility when scheduling deliveries.” Plus, with a large knuckle boom crane in their fleet, Hy-Grade earns more business and is more competitive in niche markets. **Leaders in innovation, PALFINGER and FRF allowed Dominic to turn his specific goal into a reality for Hy-Grade. He reflects, “It took me a long time to figure out which crane to buy, but I know I purchased the right one.”**





LIFETIME EXCELLENCE

HOME

OVERVIEW

FEATURES

SERVICE

JOB STORY

ABOUT US

# PALFINGER ON PRECAST CONCRETE

## HY-GRADE PRECAST CONCRETE

In 1948, the Girotti brothers founded Hy-Grade Precast Concrete in St. Catharines, ON, and produced their first concrete washtub. Since then, the line has expanded significantly to include high-quality traffic signs, modular buildings, utility vaults, precast stairs and retaining walls for various markets. In 2010, the company expanded into the US and operates a second location in South Byron, NY.

With a competitive edge in mind, owner, Dominic Girotti, set on a solution that would allow Hy-Grade to meet customer demands by reducing costs and adding value. The goal was clear: expand their current product line to include a large knuckle boom crane capable of transporting and installing 30,000 lbs. buildings at 20 ft. outreach, therefore eliminating the need for third party shipping and crane companies. As an active member of the National Precast Concrete Association, Dominic turned to the industry to begin his search. “I had a need to transport a particular building on a truck and offload it. That requires a big crane and a truck that can handle the weight of the building and the crane itself.



**“THIS CRANE IS SO SMOOTH  
AND PRECISE...”**

With my PALFINGER crane, I am confident that I can accurately set heavy loads without damaging our products. It works great!”

Mark, Crane Operator,  
Hy-Grade Precast Concrete  
St.Catharines, ON



Gina Gonzalez adds, “I make the wheels on our products every single day. Now, we offer the most value to our customers. It handles more weight and provides more flexibility in our business.” Plus, with a large knuckle boom crane in their fleet, Hy-Grade is more competitive in niche markets. PALFINGER and FRF allowed Dominic to turn his vision into reality for Hy-Grade. He reflects, “It took me a long time to buy, but I know I purchased the right one.”



→ SEE OUR FANS



# PALFINGER NORTH AMERICA GROUP



LIFETIME EXCELLENCE

SALES NETWORK

MANUFACTURING



## A STRONG GLOBAL PARTNER - YOU CAN RELY ON

- Founded in 1932
- Leading international manufacturer of innovative lifting solutions
- Over 9,100 employees world-wide
- Comprised of 68 companies in 25 countries
- More than 200 independent general importers - in over 130 countries on all continents
- Market-ready solutions



# PALFINGER NORTH AMERICA GROUP



LIFETIME EXCELLENCE

SALES NETWORK

MANUFACTURING



**TO US, “LIFETIME EXCELLENCE”  
MEANS SETTING TOP PERFORMANCE  
AS A MINIMUM REQUIREMENT.**

LIFETIME EXCELLENCE is our promise. Our core message. Our brand essence. To our customers, it means top performance without compromise. The most cost-effective, reliable and innovative lifting solutions in a global network of expert service partners – for the entire product lifetime.

PLAY VIDEO



LIFETIME EXCELLENCE

# PALFINGER NORTH AMERICA GROUP



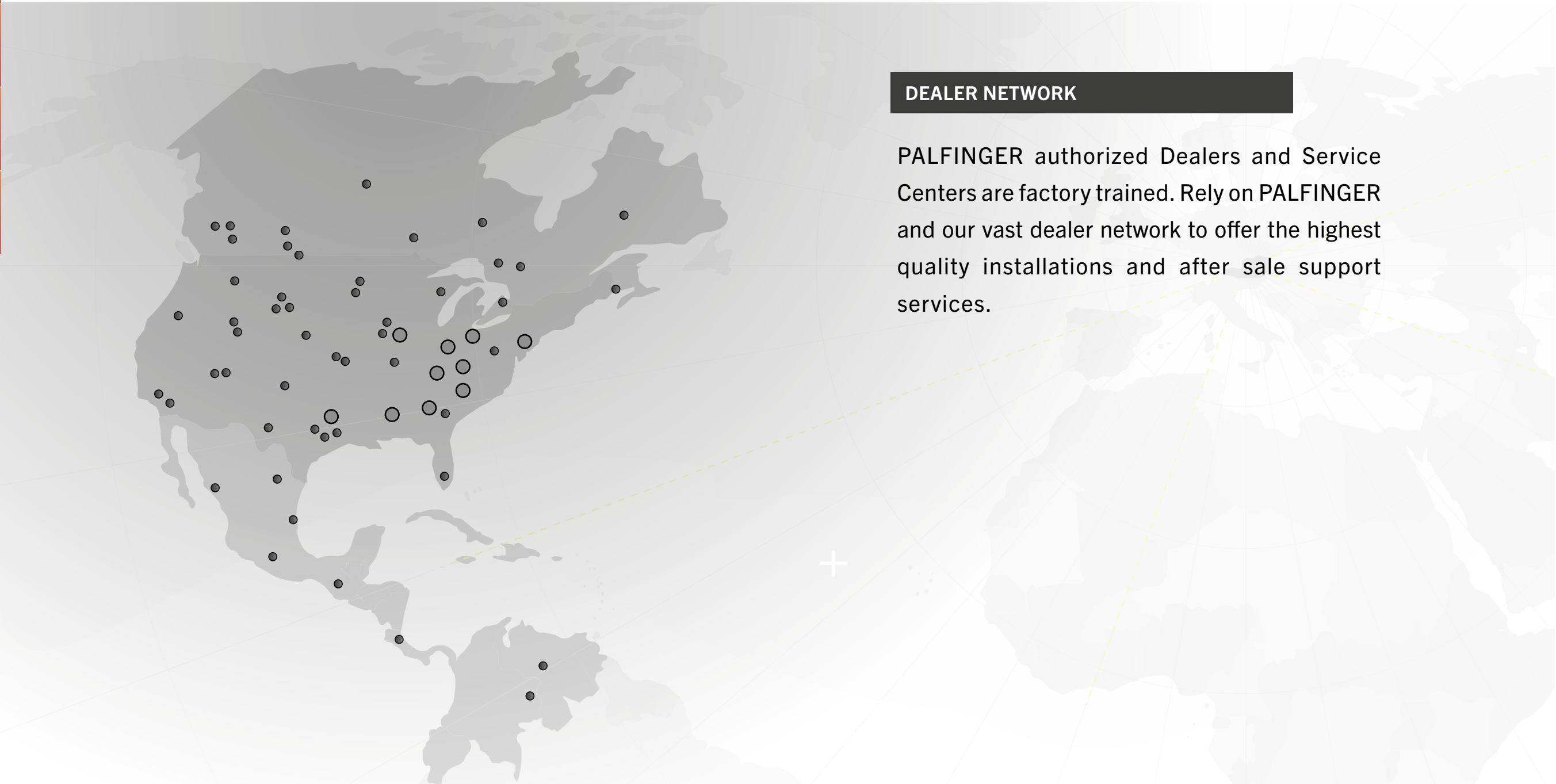
LIFETIME EXCELLENCE

SALES NETWORK

MANUFACTURING

## DEALER NETWORK

PALFINGER authorized Dealers and Service Centers are factory trained. Rely on PALFINGER and our vast dealer network to offer the highest quality installations and after sale support services.



# PALFINGER NORTH AMERICA GROUP



LIFETIME EXCELLENCE

SALES NETWORK

MANUFACTURING

## PALFINGER NORTH AMERICA GROUP

consists of 4 manufacturing locations, 14 wholly-owned distribution sites (Palfinger USA), a fleet of over 100 Field Service Trucks (Palfinger USA) and over 800 dealers / distributors and sales partners to provide North and Latin American markets with superior lifting, loading and handling solutions. Our comprehensive product portfolio qualifies PALFINGER as a complete supplier of truck-mounted equipment.

**PALFINGER**  
is the one stop shop  
for premium, single source solutions.

MANUFACTURING SITES







LIFETIME EXCELLENCE

HOME

OVERVIEW

FEATURES

SERVICE

JOB STORY

ABOUT US



**PALFINGER NORTH AMERICA**  
NIAGARA FALLS, CANADA

A market leader in the design and manufacturing of knuckle boom cranes, Palfinger North America began in Niagara Falls, Canada, where a crane sales and service facility was established in 1989. Steady growth allowed for facility expansions to accommodate Crane assembly and improved service and spare parts delivery (2002-2005), in addition to a new testing hall and increased facility space (2008). The product portfolio has expanded to include PALFINGER truck-mounted forklifts, EPSILON timber and refuse loaders and aerial work platforms.

Facility highlights include:

- ➔ Crane assembly
- ➔ Spare parts center



MANUFACTURING

MANUFACTURING SITES

- + NIAGARA FALLS, ON
- + TRENTON, NJ
- + COUNCIL BLUFFS, IA
- + OKLAHOMA CITY, OK



LIFETIME EXCELLENCE

HOME

OVERVIEW

FEATURES

SERVICE

JOB STORY

ABOUT US



**PALFINGER AMERICAN ROLL-OFF**  
EAST COAST HUB, TRENTON, NJ

Established in 1972, Palfinger American Roll-Off (PARO) became a member of the PALFINGER North America Group in 2009. With manufacturing operations located in Trenton, NJ, PARO offers a range of container handling solutions including cable roll-off hoists and the PALFINGER Hooklift brand. The hub also provides installation, service and warehousing for other PALFINGER products and is a location for PALFINGER University.

Facility highlights include:

- ➔ East Coast sales, distribution and service for liftgates
- ➔ Sales and service operations for Palfinger USA Trenton



MANUFACTURING

MANUFACTURING SITES



NIAGARA FALLS, ON



TRENTON, NJ



COUNCIL BLUFFS, IA



OKLAHOMA CITY, OK



LIFETIME EXCELLENCE

HOME

OVERVIEW

FEATURES

SERVICE

JOB STORY

ABOUT US



**OMAHA STANDARD PALFINGER**  
**COUNCIL BLUFFS, IA**

Located in Council Bluffs, IA, Omaha Standard was established in 1926 and became a member of the PALFINGER North America Group in 2008. Setting the industry standard for more than 80 years, Omaha Standard PALFINGER (OSP) is a leading manufacturer of service cranes, crane bodies, PAL Pro mechanics trucks, air compressors and liftgates. OSP offers one of the most comprehensive product portfolios available from one supplier.

- Facility highlights include:
- ➔ Environmentally-friendly e-coat paint facility
  - ➔ Manufacturing location for service cranes, crane bodies and liftgates



MANUFACTURING

MANUFACTURING SITES

+ NIAGARA FALLS, ON

+ TRENTON, NJ

+ COUNCIL BLUFFS, IA

+ OKLAHOMA CITY, OK





LIFETIME EXCELLENCE

HOME

OVERVIEW

FEATURES

SERVICE

JOB STORY

ABOUT US

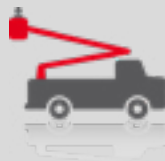


**PALFINGER NORTH AMERICA**  
**OKLAHOMA CITY, OK**

A PALFINGER company since 2010, PALFINGER Oklahoma City (formerly known as ETI) is a leading manufacturer of bucket trucks and aerial work platforms designed specifically for telecommunications, electrical utility, energy, industrial and other professions. In 2021, ETI became one PALFINGER and operates on a direct sale basis in the Unites States and operates an export division for products sold throughout the world. Since the original founding in 1991, it has become the leader in providing customer service solutions thanks to their one driving goal: to make sure that you can depend on PALFINGER.

Facility highlights include:

- ➔ 300 manufacturing, engineering and service professionals
- ➔ Fiberglass boom manufacturing



MANUFACTURING

MANUFACTURING SITES



NIAGARA FALLS, ON



TRENTON, NJ



COUNCIL BLUFFS, IA



OKLAHOMA CITY, OK