

# PK 8500

*Performance*

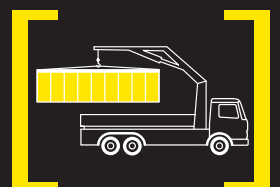
**PALFINGER**



## STRONG AND VERSATILE

Its perfect ratio of dead weight to lifting capacity makes the PK 8500 *Performance* the yardstick in its class. High-strength, fine-grained steel and its numerous equipment features permit precision and flexibility even in difficult conditions.

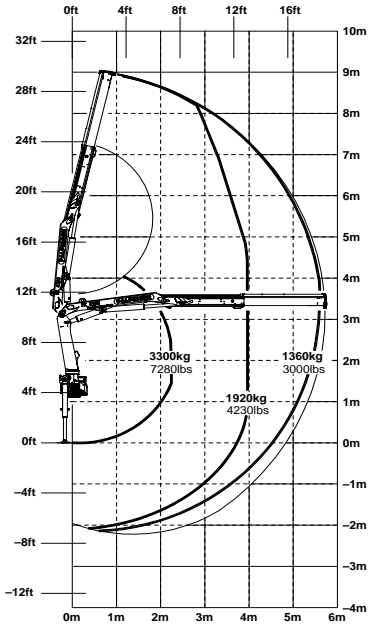
The PK 8500 *Performance* – a strong partner to help you handle any job.



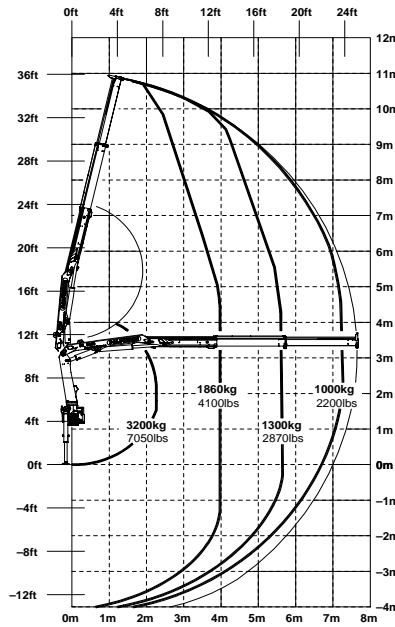
# HIGH LIFTING CAPACITY FOR CONVINCING PERFORMANCE



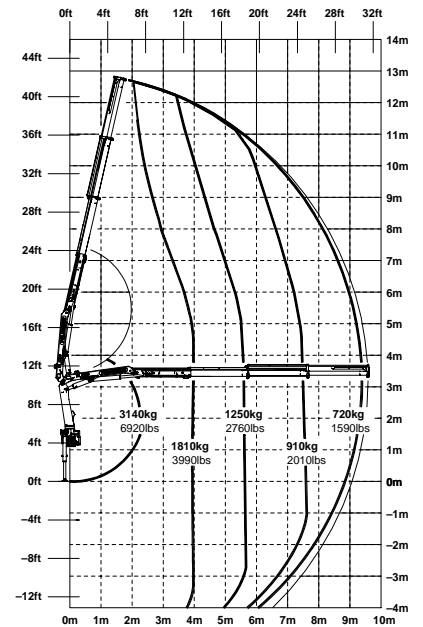
**PK 8500 Performance**



**PK 8500 Performance A**

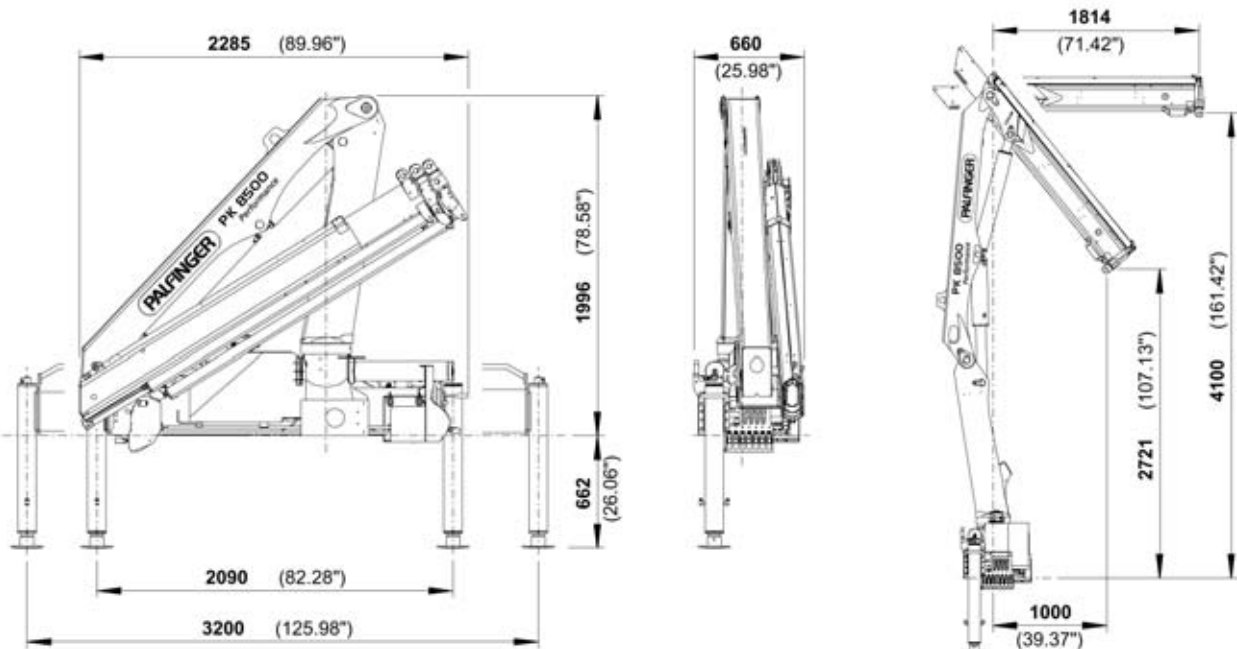


**PK 8500 Performance B**



PK 8500 Performance		
Technical Specifications (EN 12999 H1-B3)		
Max. lifting moment	7.6 mt/75.0 kNm	55300 ft.lbs
Max. lifting capacity	3300 kg/32.4 kN	7280 lbs
Max. hydraulic outreach	9.6 m	31' 6"
Slewing angle	400°	

PK 8500 Performance			
Standard crane			
Slewing torque	0.9 mt/9.0 kNm	6640 ft.lbs	
Outreach	5.7 m	18' 8"	
Stabilizer spread standard	3.2 m	10' 6"	
Stabilizer spread max.	5.6 m	18' 4"	
Fitting space required	0.66 m	2' 2"	
Width folded	2.3 m	7' 7"	
Max. operating pressure	315 bar	4568 psi	
Recommended pump capacity	from 25 l/min to 35 l/min	5.5 imp.gal./min to 7.7 imp.gal./min	6.6 US gal./min to 9.2 US gal./min
with RC- and LS-system	from 40 l/min to 50 l/min	8.8 imp.gal./min to 11.0 imp.gal./min	10.6 US gal./min to 13.2 US gal./min
Dead weight standard crane	875 kg	1930 lbs	



Applications shown in the leaflet do not always correspond to the standard specifications. Design and specification are subject to change without prior notice. Country-specific regulations must be considered for the crane installation.